

THE WORLD BANK GROUP ARCHIVES

PUBLIC DISCLOSURE AUTHORIZED

Folder Title: Country Photographs - Ecuador - Loan 94 - Photographs - Vol. 1

Folder ID: 1720771

Fonds: Records of Office of External Affairs (WB IBRD/IDA EXT)

Digitized: October 20, 2014

To cite materials from this archival folder, please follow the following format:
[Descriptive name of item], [Folder Title], Folder ID [Folder ID], World Bank Group Archives, Washington, D.C., United States.

The records in this folder were created or received by The World Bank in the course of its business.

The records that were created by the staff of The World Bank are subject to the Bank's copyright.

Please refer to <http://www.worldbank.org/terms-of-use-earchives> for full copyright terms of use and disclaimers.



THE WORLD BANK
Washington, D.C.


© 2012 International Bank for Reconstruction and Development / International Development Association or
The World Bank
1818 H Street NW
Washington DC 20433
Telephone: 202-473-1000
Internet: www.worldbank.org


PUBLIC DISCLOSURE AUTHORIZED

ECUADOR - LN-94

Vol. 1

DECLASSIFIED
WBG Archives

 **Archives**

 **1720771**

R2002-110 Other #: 49 217379B

Country Photographs - Ecuador - Loan 94 - Photographs - Vol. 1

15

20-94-EC-1



Inches 1 2 3 4 5 6 7 8

Centimetres 1 2 3 4 5 6 7 8 9 10 11 12 13 14 15 16 17 18 19

KODAK Color Control Patches © The Tiffen Company, 2000

Kodak
LICENSED PRODUCT

Blue Cyan Green Yellow Red Magenta White 3/Color Black



LO-94-EC-2



Inches 1 2 3 4 5 6 7 8

Centimetres 1 2 3 4 5 6 7 8 9 10 11 12 13 14 15 16 17 18 19

KODAK Color Control Patches © The Tiffen Company, 2000

Kodak
LICENSED PRODUCT

Blue Cyan Green Yellow Red Magenta White 3/Color Black



20-94-EC-3



Inches 1 2 3 4 5 6 7 8

Centimetres 1 2 3 4 5 6 7 8 9 10 11 12 13 14 15 16 17 18 19

KODAK Color Control Patches © The Tiffen Company, 2000

Kodak

LICENSED PRODUCT

Blue Cyan Green Yellow Red Magenta White 3/Color Black



94-EC-1



Inches 1 2 3 4 5 6 7 8

Centimetres 1 2 3 4 5 6 7 8 9 10 11 12 13 14 15 16 17 18 19

KODAK Color Control Patches © The Tiffen Company, 2000

Kodak
LICENSED PRODUCT

Blue Cyan Green Yellow Red Magenta White 3/Color Black



INTERNATIONAL BANK FOR RECONSTRUCTION AND DEVELOPMENT
PHOTO DISTRIBUTION

Publication	Date of Issue	Page Number	Publication	Date of Issue	Page Number
<p><u>INTERNATIONAL BANK FOR RECONSTRUCTION AND DEVELOPMENT</u> <u>Washington, D.C. 20433</u></p> <p>94-EC-1 In 1954 the WORLD BANK made a loan of \$8.5 million for a highway construction program in Ecuador. Otavalo Feria is a market and meeting place for Andean Indian groups. On Saturday of each week, Indians from neighbouring towns converge on Otavalo; they come to sell their wares, to replenish their larders and to meet socially with friends.</p> <p>Photo: United Nations June 1955</p>					

94-EC-3



Inches 1 2 3 4 5 6 7 8

Centimetres 1 2 3 4 5 6 7 8 9 10 11 12 13 14 15 16 17 18 19

KODAK Color Control Patches © The Tiffen Company, 2000

Kodak

LICENSED PRODUCT

Blue Cyan Green Yellow Red Magenta White 3/Color Black



INTERNATIONAL BANK FOR RECONSTRUCTION AND DEVELOPMENT
PHOTO DISTRIBUTION

Publication	Date of Issue	Page Number	Publication	Date of Issue	Page Number
<p>INTERNATIONAL BANK FOR RECONSTRUCTION AND DEVELOPMENT Washington, D.C. 20433</p> <p>94-EC-3 In 1954 the WORLD BANK made a loan of \$8.5 million for a highway construction program in Ecuador. In the early hours of dawn the Indians begin to arrive by bus and on foot, carrying and driving the various items which will go on sale in the market places of Otavalo.</p> <p>Photo: United Nations June 1955</p>					

94-EC-4



Inches 1 2 3 4 5 6 7 8

Centimetres 1 2 3 4 5 6 7 8 9 10 11 12 13 14 15 16 17 18 19

KODAK Color Control Patches © The Tiffen Company, 2000

Kodak
LICENSED PRODUCT

Blue Cyan Green Yellow Red Magenta White 3/Color Black



INTERNATIONAL BANK FOR RECONSTRUCTION AND DEVELOPMENT
PHOTO DISTRIBUTION

Publication	Date of Issue	Page Number	Publication	Date of Issue	Page Number
<p><u>INTERNATIONAL BANK FOR RECONSTRUCTION AND DEVELOPMENT</u> <u>Washington, D.C. 20433</u></p> <p>94-EG-4 In 1954 the WORLD BANK made a loan of \$8.5 million for a highway construction program in Ecuador. In the early hours of dawn the Indians begin to arrive by bus and on foot, carrying and driving the various items which will go on sale in the market places of Otavalo.</p> <p>Photo: United Nations June 1955</p>					

WITHDRAWN FROM CIRCULATION



Palestina - Ymas 25 Dec. 1955



Inches 1 2 3 4 5 6 7 8

Centimetres 1 2 3 4 5 6 7 8 9 10 11 12 13 14 15 16 17 18 19

KODAK Color Control Patches © The Tiffen Company, 2000

Kodak
LICENSED PRODUCT

Blue Cyan Green Yellow Red Magenta White 3/Color Black



INTERNATIONAL BANK FOR RECONSTRUCTION AND DEVELOPMENT
PHOTO DISTRIBUTION

Publication	Date of Issue	Page Number	Publication	Date of Issue	Page Number
<p>INTERNATIONAL BANK FOR RECONSTRUCTION AND DEVELOPMENT Washington, D.C. 20433</p> <p>94-EC-5 In 1954 the WORLD BANK made a loan of \$8.5 million for a highway construction program in Ecuador. Here is an aerial view of the new Palestina-Vinces Road joining main road Guayaquil to Bapalme.</p> <p>Photo: Comite Ejecutivo de Vialidad Provincia del Guayas. September 10, 1955</p>					

94-EC-6

WITHDRAWN FROM CIRCULATION



El. Empalme - Dec 1955



Inches 1 2 3 4 5 6 7 8

Centimetres 1 2 3 4 5 6 7 8 9 10 11 12 13 14 15 16 17 18 19

KODAK Color Control Patches © The Tiffen Company, 2000

Kodak
LICENSED PRODUCT

Blue Cyan Green Yellow Red Magenta White 3/Color Black



Publication	Date of Issue	Page Number	Publication	Date of Issue	Page Number
<p><u>INTERNATIONAL BANK FOR RECONSTRUCTION AND DEVELOPMENT</u> <u>Washington, D.C. 20433</u></p> <p>94-EC-6 In 1954 the WORLD BANK made a loan of \$8.5 million for a highway construction program in Ecuador. Here is a view of the crushing plant at Empalme preparing material for asphalt work.</p> <p>Photo: Comité Ejecutivo de Vialidad Provincia del Guayas</p>	<p>September 10, 1955</p>				

94-EC-7

WITHDRAWN FROM CIRCULATION



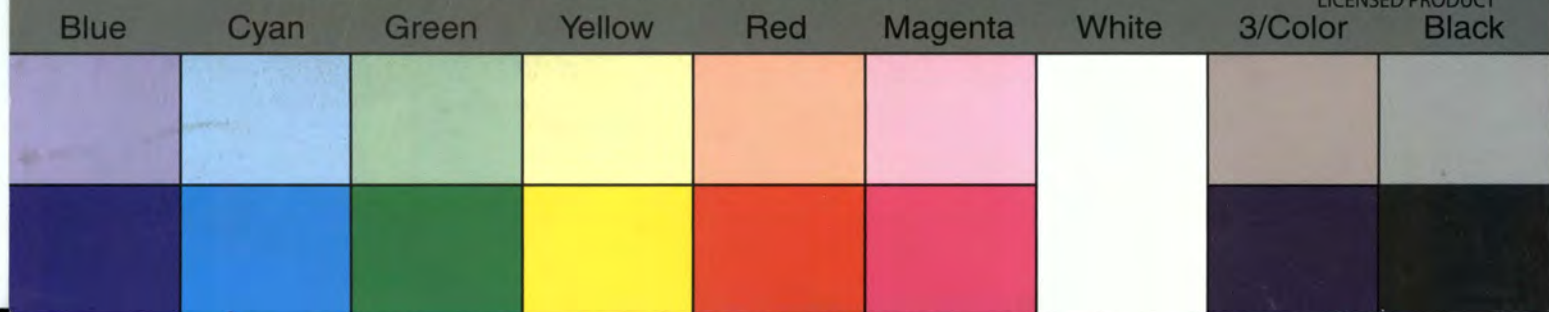
IBRD/LIDA
 AV/91
 WBG
 ARCHIVES

Inches 1 2 3 4 5 6 7 8

Centimetres 1 2 3 4 5 6 7 8 9 10 11 12 13 14 15 16 17 18 19

KODAK Color Control Patches © The Tiffen Company, 2000

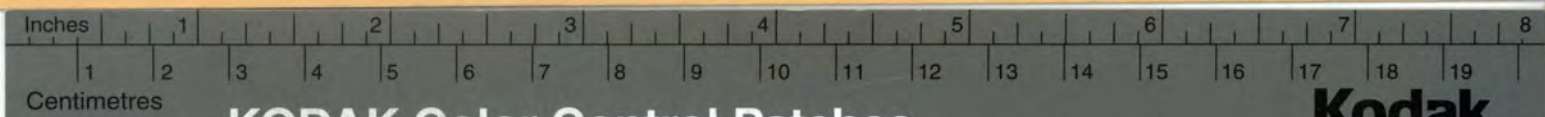
Kodak
 LICENSED PRODUCT



Publication	Date of Issue	Page Number	Publication	Date of Issue	Page Number
<p><u>INTERNATIONAL BANK FOR RECONSTRUCTION AND DEVELOPMENT</u> <u>Washington, D.C. 20433</u></p> <p>9A-EC-7 In 1954 the WORLD BANK made a loan of \$8.5 million for a highway construction program in Ecuador. Here is a view of the Guardaraya Camp on the Guayaquil - Espalme Road.</p> <p>Photo: Comite Ejecutivo de Vialidad Provincia del Guayas</p> <p>September 10, 1955</p>					

94-52-8

WITHDRAWN FROM CIRCULATION



INTERNATIONAL BANK FOR RECONSTRUCTION AND DEVELOPMENT
PHOTO DISTRIBUTION

Publication	Date of Issue	Page Number	Publication	Date of Issue	Page Number
<p><u>INTERNATIONAL BANK FOR RECONSTRUCTION AND DEVELOPMENT</u> <u>Washington, D.C. 20433</u></p> <p>94-EC-8 In 1954 the WORLD BANK made a loan of \$8.5 million for a highway construction program in Ecuador. Here is an aerial view of the Daule River with landing stages and ferries loading up.</p> <p>Photo: Comite Ejecutivo de Vialidad Provincia del Guayas September 10, 1955</p>					

WITHDRAWN FROM CIRCULATION



IBRD / IDA
AV/91
WBG
ARCHIVES

Inches 1 2 3 4 5 6 7 8

Centimetres 1 2 3 4 5 6 7 8 9 10 11 12 13 14 15 16 17 18 19

KODAK Color Control Patches © The Tiffen Company, 2000

Kodak
LICENSED PRODUCT

Blue Cyan Green Yellow Red Magenta White 3/Color Black



94-EC-10

WITHDRAWN FROM CIRCULATION



Inches 1 2 3 4 5 6 7 8

Centimetres 1 2 3 4 5 6 7 8 9 10 11 12 13 14 15 16 17 18 19

KODAK Color Control Patches © The Tiffen Company, 2000

Kodak
LICENSED PRODUCT

Blue Cyan Green Yellow Red Magenta White 3/Color Black



Publication	Date of Issue	Page Number	Publication	Date of Issue	Page Number
<p><u>INTERNATIONAL BANK FOR RECONSTRUCTION AND DEVELOPMENT</u> <u>Washington, D.C. 20433</u></p> <p>94-EC-10 In 1954, the WORLD BANK made a loan of \$8.5 million for a highway construction program in Ecuador. Here is an aerial view of a banana plantation near Empalme. Bananas are one of the chief export crops of Ecuador.</p> <p>Photo: Comite Ejecutivo de Vialidad Provincia del Guayas</p> <p>September 10, 1955.</p>					

94-EC-11

11



Inches 1 2 3 4 5 6 7 8

Centimetres 1 2 3 4 5 6 7 8 9 10 11 12 13 14 15 16 17 18 19

KODAK Color Control Patches © The Tiffen Company, 2000

Kodak
LICENSED PRODUCT

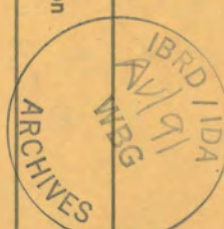
Blue Cyan Green Yellow Red Magenta White 3/Color Black



INTERNATIONAL BANK FOR RECONSTRUCTION AND DEVELOPMENT
PHOTO DISTRIBUTION

Publication	Date of Issue	Page Number	Publication	Date of Issue	Page Number
<p><u>INTERNATIONAL BANK FOR RECONSTRUCTION AND DEVELOPMENT</u> <u>Washington, D.C. 20433</u></p> <p>94-EC-11 In 1954 the WORLD BANK made a loan of \$8.5 million for a highway construction program in Ecuador. Here, milk is brought by dugouts and mules to the highway where trucks pick it up and take it to the City of Guayaquil.</p> <p>Photo: Paul Sanchez for WORLD BANK. June 1957</p>					

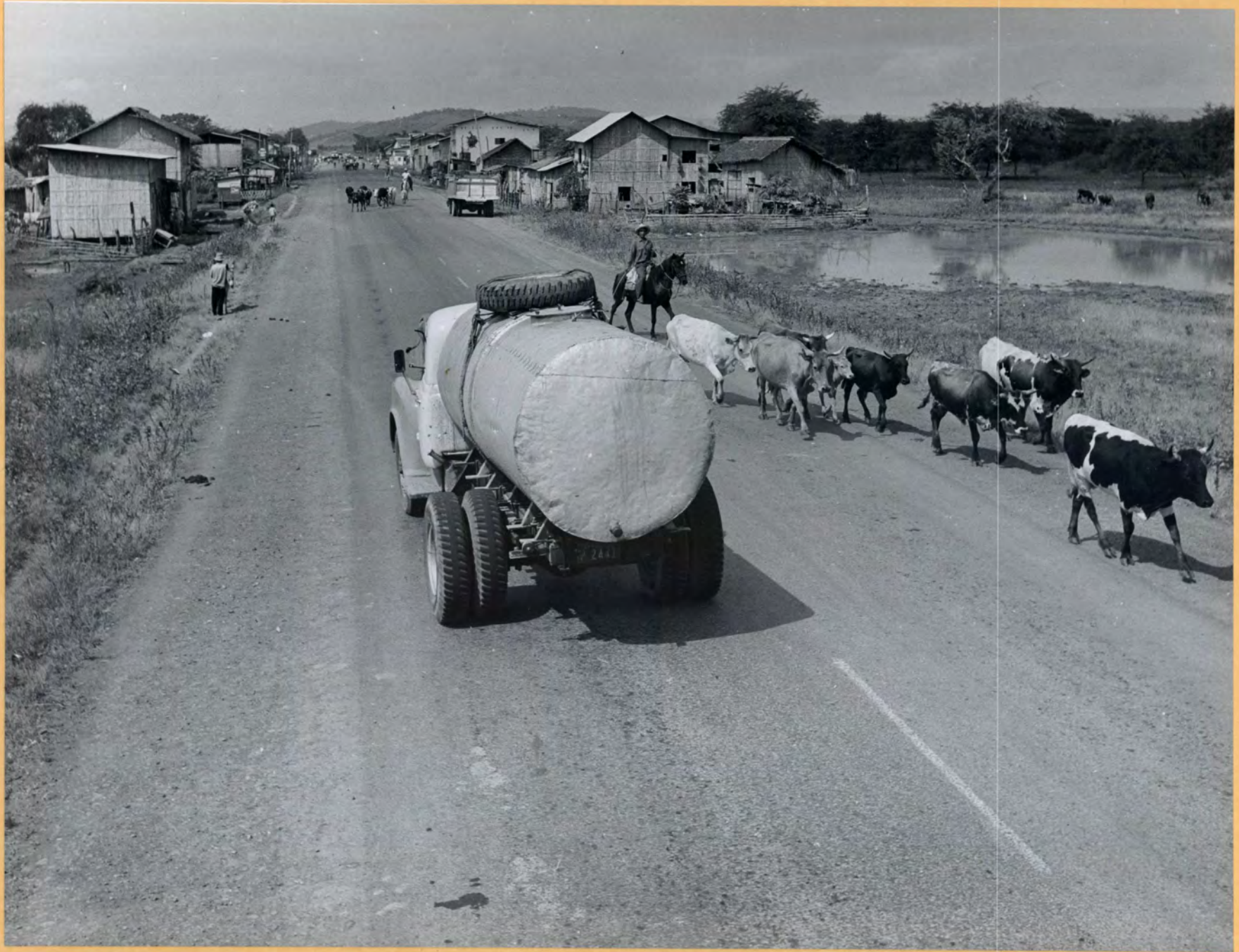
INTERNATIONAL BANK FOR RECONSTRUCTION AND DEVELOPMENT
PHOTO DISTRIBUTION



Publication	Date of Issue	Page Number	Publication	Date of Issue	Page Number
<p><u>INTERNATIONAL BANK FOR RECONSTRUCTION AND DEVELOPMENT</u> <u>Washington, D.C. 20433</u></p> <p>94-EC-12 In 1954 the WORLD BANK made a loan of \$8.5 million for a highway construction program in Ecuador. Milk is brought by dugouts and mules to the highway where trucks pick it up and take it to the City of Guayaquil.</p> <p>Photo: Paul Sanche for WORLD BANK. June 1957</p>					

94-EC-13

WITHDRAWN FROM CIRCULATION



4

Inches 1 2 3 4 5 6 7 8

Centimetres 1 2 3 4 5 6 7 8 9 10 11 12 13 14 15 16 17 18 19


KODAK Color Control Patches © The Tiffen Company, 2000

Kodak
LICENSED PRODUCT

Blue Cyan Green Yellow Red Magenta White 3/Color Black



INTERNATIONAL BANK FOR RECONSTRUCTION AND DEVELOPMENT
PHOTO DISTRIBUTION

Publication	Date of Issue	Page Number	Publication	Date of Issue	Page Number
<p><u>INTERNATIONAL BANK FOR RECONSTRUCTION AND DEVELOPMENT</u> <u>Washington, D.C. 20433</u></p> <p>94-EC-13 In 1954 the WORLD BANK made a loan of \$8.5 million for a highway construction program in Ecuador. Here is the entrance to New Nobol, a five-year old settlement right on the highway. The road has brought a new life to the whole region, where rice production has increased considerably.</p> <p>Photo: Paul Sanche for WORLD BANK. June 1957</p>			<p style="text-align: center;">  </p>		

94-EC-14



7


Inches 1 2 3 4 5 6 7 8
Centimetres 1 2 3 4 5 6 7 8 9 10 11 12 13 14 15 16 17 18 19

KODAK Color Control Patches © The Tiffen Company, 2000

Kodak
LICENSED PRODUCT

Blue Cyan Green Yellow Red Magenta White 3/Color Black

Blue	Cyan	Green	Yellow	Red	Magenta	White	3/Color	Black
Dark Blue	Light Blue	Light Green	Light Yellow	Light Red	Light Magenta	White	Dark Grey	Black
Dark Blue	Blue	Green	Yellow	Red	Magenta	White	Dark Blue	Black

Publication	Date of Issue	Page Number	Publication	Date of Issue	Page Number
<p><u>INTERNATIONAL BANK FOR RECONSTRUCTION AND DEVELOPMENT</u> <u>Washington, D.C. 20433</u></p> <p>94-EC-14 Ecuador's highway program has been assisted by funds from the WORLD BANK.</p> <p>Here is an aerial view of El Espalme (The Crossroads) in the northern tip of Guayas Province. One single hut is all there was in that spot in 1955; now a new town has sprung up and the place keeps growing. It is a transportation and trading center as well as a banana producing community. This is where No. 7 highway crosses Road No. 4.</p>	<p>Photo: Paul Sanche for WORLD BANK. June 1957</p>				

94-EC-15



Inches 1 2 3 4 5 6 7 8

Centimetres 1 2 3 4 5 6 7 8 9 10 11 12 13 14 15 16 17 18 19

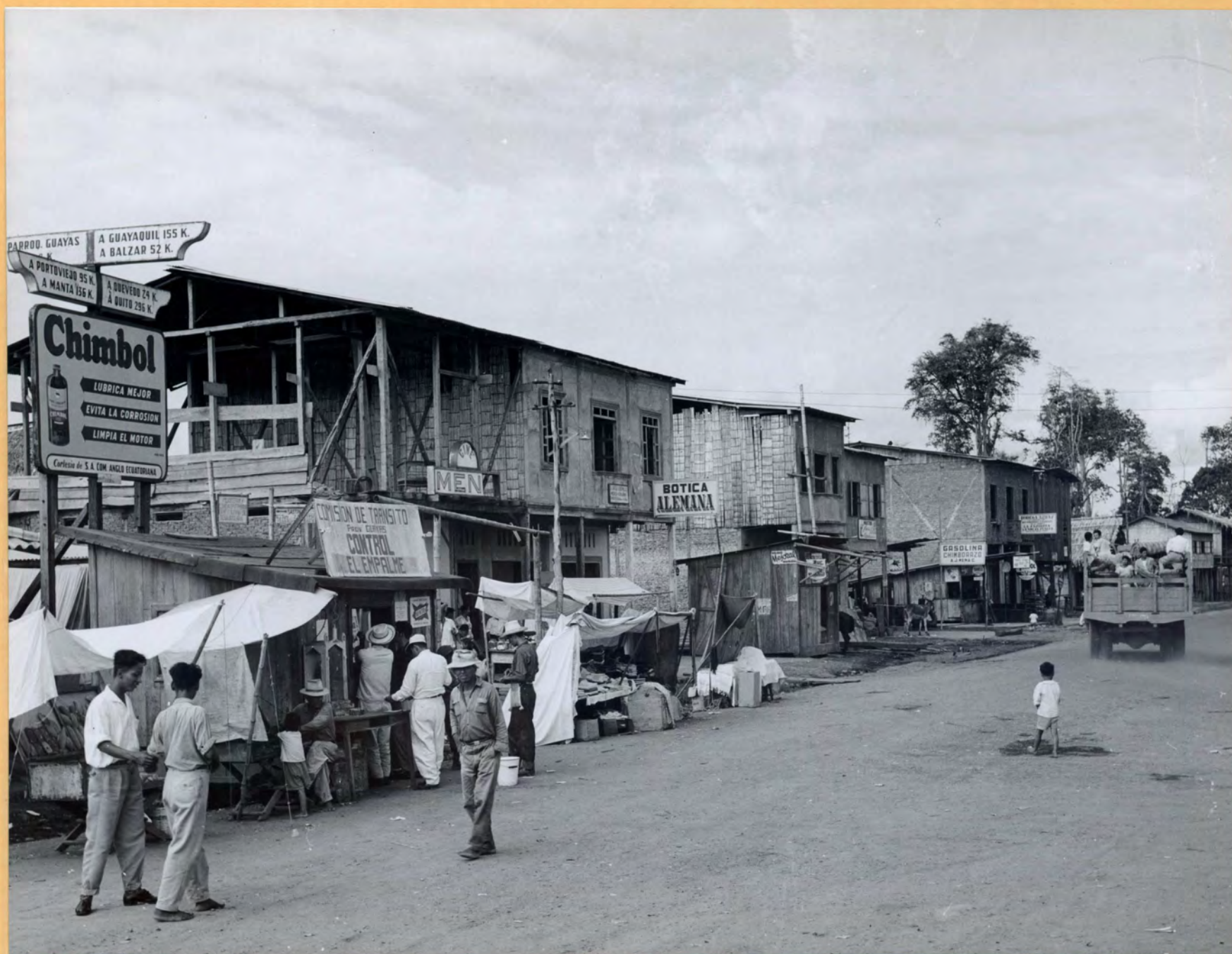
KODAK Color Control Patches © The Tiffen Company, 2000

Kodak
LICENSED PRODUCT

Blue Cyan Green Yellow Red Magenta White 3/Color Black



WITHDRAWN FROM CIRCULATION



9

Inches 1 2 3 4 5 6 7 8

Centimetres 1 2 3 4 5 6 7 8 9 10 11 12 13 14 15 16 17 18 19

KODAK Color Control Patches © The Tiffen Company, 2000

Kodak
LICENSED PRODUCT

Blue Cyan Green Yellow Red Magenta White 3/Color Black



Publication	Date of Issue	Page Number	Publication	Date of Issue	Page Number
<p><u>INTERNATIONAL BANK FOR RECONSTRUCTION AND DEVELOPMENT</u> <u>Washington, D.C. 20433</u></p> <p>94-EC-16 Ecuador's highway program has been assisted by funds from the WORLD BANK.</p> <p>Here is downtown El Empalme. Note the cross-roads sign. The booming settlement had but one hut in 1955; now it is a transportation and trading center as well as a banana producing community. This is where No. 7 highway crosses No. 4.</p>	<p>Photo: Paul Sanche for WORLD BANK. June 1957</p>				



94-EG-17



Inches 1 2 3 4 5 6 7 8

Centimetres 1 2 3 4 5 6 7 8 9 10 11 12 13 14 15 16 17 18 19

KODAK Color Control Patches © The Tiffen Company, 2000

Kodak
LICENSED PRODUCT

Blue Cyan Green Yellow Red Magenta White 3/Color Black



Ecuador

HIGHWAY DEVELOPMENT IN ECUADOR.- INTERESECTION OF TWO NEW HIGHWAYS. 94-EC-17

INTERNATIONAL BANK FOR RECONSTRUCTION AND DEVELOPMENT
Washington, D.C. 20433

94-EC-17 Ecuador's highway program has been assisted by funds from the WORLD BANK.

Here is downtown El Napalme. The booming settlement had but one hut in 1955; now it is a transportation and trading center as well as a banana producing community. This is where No. 7 highway crosses No. 4.

Photo: Paul Sanchez for WORLD BANK.

June 1957



94-EC-18



(11)

Inches 1 2 3 4 5 6 7 8

Centimetres 1 2 3 4 5 6 7 8 9 10 11 12 13 14 15 16 17 18 19

KODAK Color Control Patches © The Tiffen Company, 2000

Kodak
LICENSED PRODUCT

Blue Cyan Green Yellow Red Magenta White 3/Color Black



Publication	Date of Issue	Page Number	Publication	Date of Issue	Page Number
<p><u>INTERNATIONAL BANK FOR RECONSTRUCTION AND DEVELOPMENT</u> <u>Washington, D.C. 20433</u></p> <p>94-EC-18 Ecuador's highway program has been assisted by funds from the WORLD BANK.</p> <p>Here is downtown El Empalme. The booming settlement had but one hut in 1955; now it is a transportation and trading center as well as a banana producing community. This is where No. 7 highway crosses No. 4.</p> <p>Photo: Paul Sanchez for WORLD BANK. June 1957</p>					



94-EC-19



13

Inches 1 2 3 4 5 6 7 8

Centimetres 1 2 3 4 5 6 7 8 9 10 11 12 13 14 15 16 17 18 19

KODAK Color Control Patches © The Tiffen Company, 2000

Kodak
LICENSED PRODUCT

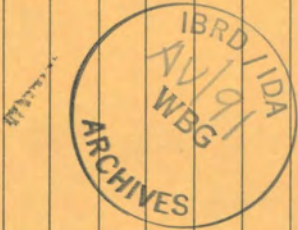
Blue Cyan Green Yellow Red Magenta White 3/Color Black



Pages 12-13

INTERNATIONAL BANK FOR RECONSTRUCTION AND DEVELOPMENT
PHOTO DISTRIBUTION

Publication	Date of Issue	Page Number	Publication	Date of Issue	Page Number
<p><i>Leaves at Work</i></p> <p><u>INTERNATIONAL BANK FOR RECONSTRUCTION AND DEVELOPMENT</u> <u>Washington, D.C. 20433</u></p> <p>94-EC-19 Ecuador's highway program has been assisted by funds from the WORLD BANK. Here, a truck passes some planters' homes on the outskirts of Eapalme. Bananas are grown right in their backyards. The town of Eapalme has sprung up since the highway was built.</p> <p>Photo: Paul Sanche for WORLD BANK. June 1957</p>	<p>1959</p>	<p>15</p>	<p></p>	<p></p>	<p></p>



F1

WITHDRAWN FROM CIRCULATION



(14)

IBRD / IDA
 WBG
 ARCHIVES

IBRD / IDA
 AV/91
 WBG
 ARCHIVES

Inches 1 2 3 4 5 6 7 8

Centimetres 1 2 3 4 5 6 7 8 9 10 11 12 13 14 15 16 17 18 19

KODAK Color Control Patches © The Tiffen Company, 2000

Kodak
LICENSED PRODUCT

Blue Cyan Green Yellow Red Magenta White 3/Color Black

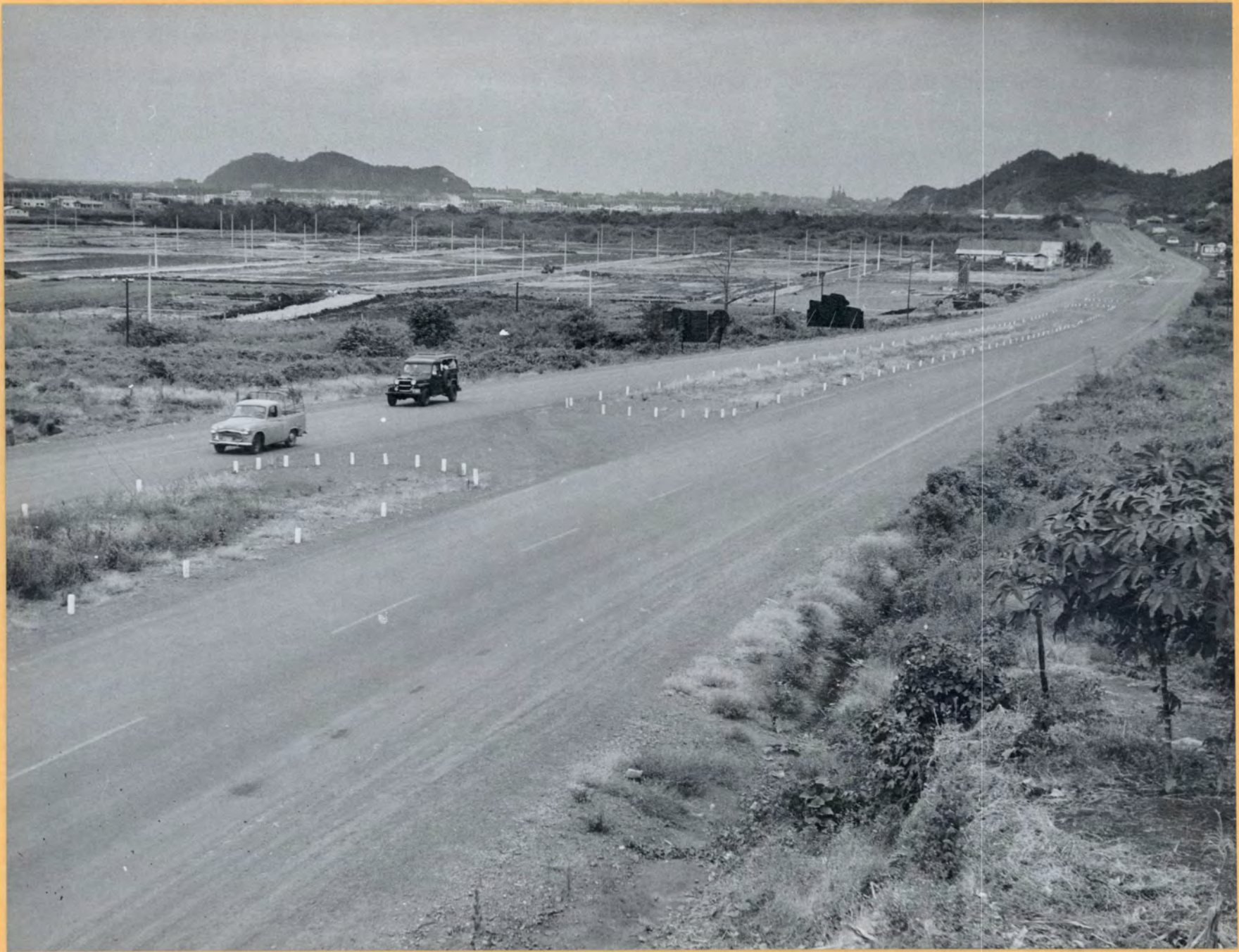


INTERNATIONAL BANK FOR RECONSTRUCTION AND DEVELOPMENT
PHOTO DISTRIBUTION

Publication	Date of Issue	Page Number	Publication	Date of Issue	Page Number
<p><u>INTERNATIONAL BANK FOR RECONSTRUCTION AND DEVELOPMENT Washington, D.C. 20433</u></p> <p>94-EC-20 Ecuador's highway program has been assisted by funds from the WORLD BANK.</p> <p>Here is the entrance to the "Doble Via", a four-lane highway that handles all the traffic from Highways 16 and 7 into Guayaquil. This is the toll station where police also check brakes and lights on all vehicles. Doble Via has solved the bottle-neck problem.</p>	<p>Photo: Paul Sanche for WORLD BANK. June 1957</p>				

94-EC-24

WITHDRAWN FROM CIRCULATION



16

Inches 1 2 3 4 5 6 7 8

Centimetres 1 2 3 4 5 6 7 8 9 10 11 12 13 14 15 16 17 18 19

KODAK Color Control Patches © The Tiffen Company, 2000

Kodak
LICENSED PRODUCT

Blue Cyan Green Yellow Red Magenta White 3/Color Black



INTERNATIONAL BANK FOR RECONSTRUCTION AND DEVELOPMENT
PHOTO DISTRIBUTION

Publication	Date of Issue	Page Number	Publication	Date of Issue	Page Number
<p><u>INTERNATIONAL BANK FOR RECONSTRUCTION AND DEVELOPMENT</u> <u>Washington, D.C. 20433</u></p> <p>94-EC-21 Ecuador's highway program has been assisted by funds from the WORLD BANK. The "Doble Via", a four-lane highway, handles all the traffic from Highways 16 and 7 into Guayaquil. Here, suburban lots are ready for sale along the Doble Via. Pre-planned developments are encouraged in the hope of reducing the wild mushrooming of new settlements.</p>	<p>Photo: Paul Sanche for WORLD BANK</p>	<p>June 1957</p>			

94-EC-22



18

Inches 1 2 3 4 5 6 7 8

Centimetres 1 2 3 4 5 6 7 8 9 10 11 12 13 14 15 16 17 18 19

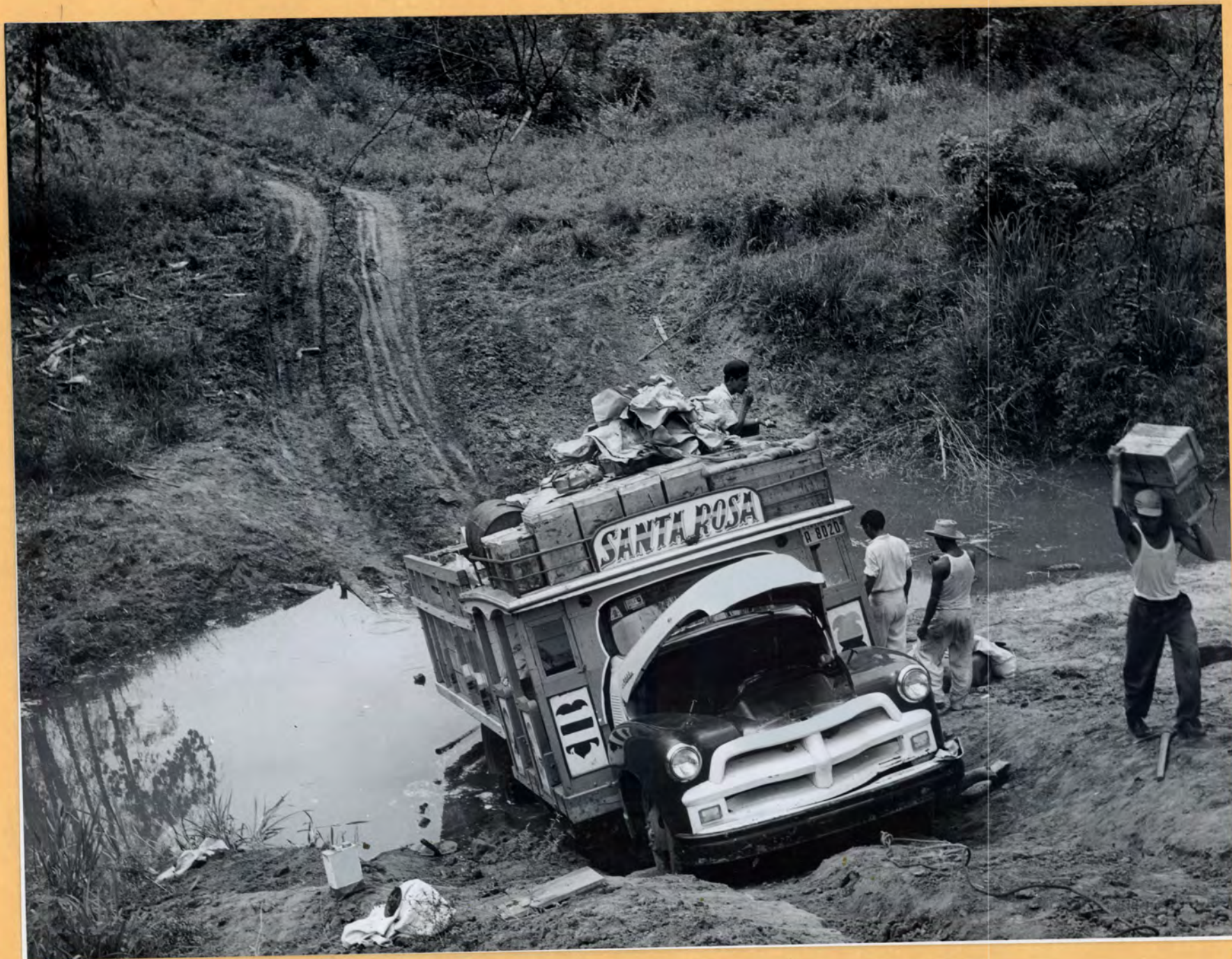
KODAK Color Control Patches © The Tiffen Company, 2000

Kodak
LICENSED PRODUCT

Blue Cyan Green Yellow Red Magenta White 3/Color Black



23
94-5C-23



19

Inches 1 2 3 4 5 6 7 8

Centimetres 1 2 3 4 5 6 7 8 9 10 11 12 13 14 15 16 17 18 19

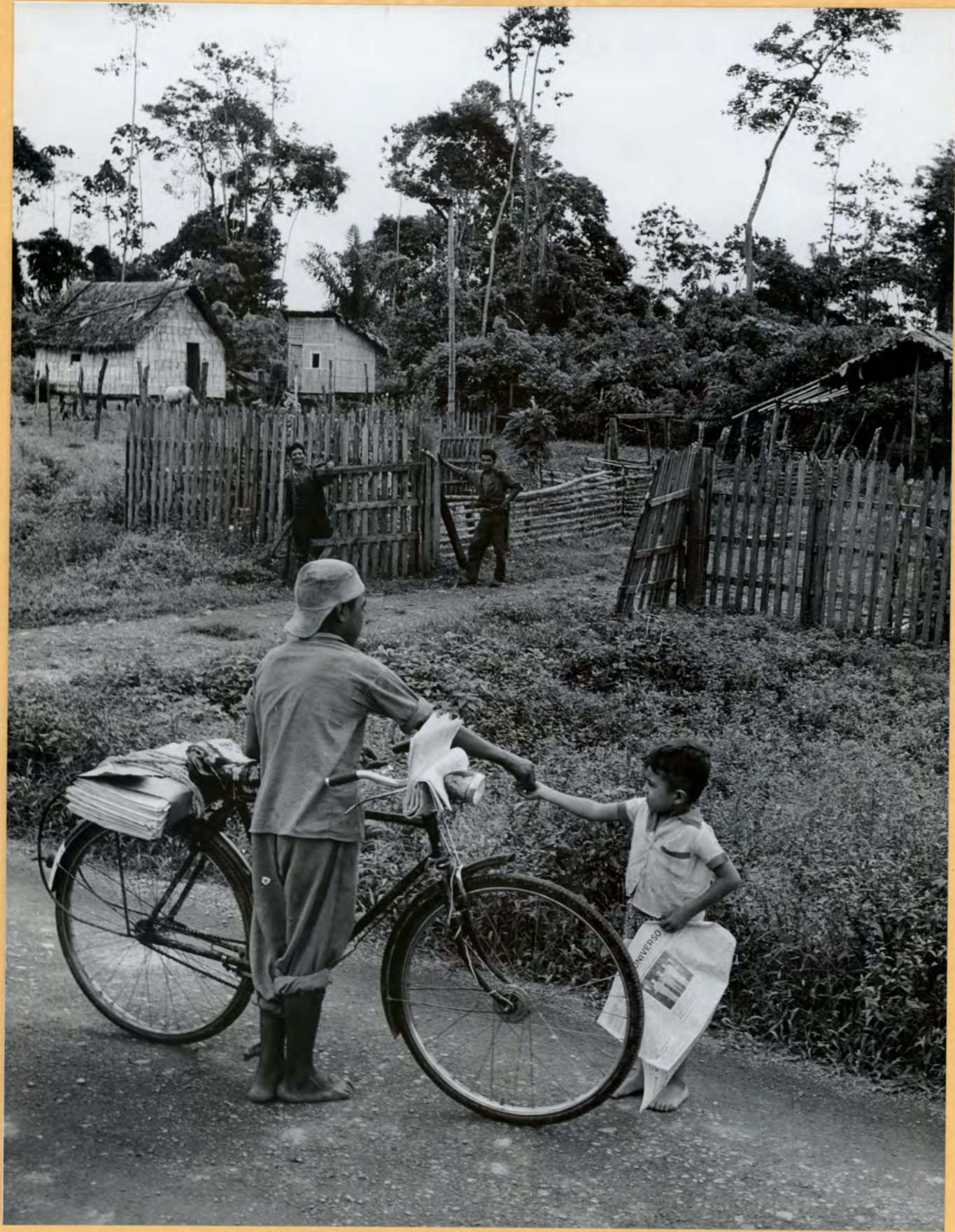
KODAK Color Control Patches © The Tiffen Company, 2000

Kodak
LICENSED PRODUCT

Blue Cyan Green Yellow Red Magenta White 3/Color Black



94-5C-24



IBRD LIDA
AV 91
WBG
KCHES

IBRD LIDA
WBG
KCHES

22

Inches 1 2 3 4 5 6 7 8

Centimetres 1 2 3 4 5 6 7 8 9 10 11 12 13 14 15 16 17 18 19

KODAK Color Control Patches

© The Tiffen Company, 2000

Kodak

LICENSED PRODUCT

Blue Cyan Green Yellow Red Magenta White 3/Color Black



INTERNATIONAL BANK FOR RECONSTRUCTION AND DEVELOPMENT
PHOTO DISTRIBUTION

Publication	Date of Issue	Page Number	Publication	Date of Issue	Page Number
<p><u>INTERNATIONAL BANK FOR RECONSTRUCTION AND DEVELOPMENT</u> <u>Washington, D.C. 20433</u></p> <p>94-EC-24. Ecuador's highway program has been assisted by funds from the WORLD BANK. Fast news for fast growing Guayas Province. Here, the newsboy uses his bicycle on the delivery route between Los Sapce and Barranco Chico.</p> <p>Photo: Paul Sanche for WORLD BANK. June 1957</p>					