

The Korea Trust Fund for Economic and Peace-Building Transitions

— **10**
years of partnership between
the World Bank Group and Korea



CONTENTS

Abbreviations and Acronyms	02
Foreword	04
Introduction	06
Timeline: KTF, Korea and the WBG-FCV	10
KTF at a Glance	12
KTF Project Stories	14
Support to Transitions from FCV	16
FCV in Middle-Income Countries	20
Regional Approaches to FCV	26
Data and Analytics for FCV	34
Innovative Engagements in FCV	38
Partnerships with Korean Institutions	43
Knowledge Sharing and Exchange Focused on Korea's Development Experiences	44
Building and Facilitating Project-Specific Partnerships	45
Partnerships and Knowledge Sharing Focused on Global FCV Issues	47
Awareness Raising on Global FCV Issues in Korea	50

Abbreviations and Acronyms

BARMM	Bangsamoro Autonomous Region of Muslim Mindanao
BCMS	Bangsamoro Conflict Monitoring System
BDA	Bangsamoro Development Agency
BOL	Bangsamoro Organic Law
C4D	Collaboration for Development
CAR	Central African Republic
CDD	Community-Driven Development
CE	Citizen Engagement
CSO	Civil Society Organization
CSR	Corporate Social Responsibility
DRC	Democratic Republic of the Congo
FARC	Revolutionary Armed Forces of Colombia
FCV	Fragility, Conflict, and Violence
GEMS	Geo-Enabling Initiative for Monitoring and Supervision
GOST	Geospatial Operations Support Team (World Bank Group)
IBRD	International Bank for Reconstruction and Development
ICT	Information and Communications Technology
IDA	International Development Association
IDA19	IDA 2019 replenishment meeting
IFC	International Finance Corporation
IPL	Inclusion and Peace Lens (Myanmar)
KDI	Korea Development Institute
KEXIM	Export-Import Bank of Korea
KIEP	Korea Institute for International Economic Policy
KOICA	Korea International Cooperation Agency
KOPIA	Korea Project on International Agriculture
KOSTAT	Statistics Korea
KT	Korea Telecom
KTF	Korea Trust Fund for Economic and Peace-Building Transitions
LIPW	Labor Intensive Public Works
M&E	Monitoring and Evaluation
MENA	Middle East and North Africa

MICs	Middle-Income Countries
MILF	Moro Islamic Liberation Front
MOEF	Ministry of Economy and Finance (Republic of Korea)
MOFA	Ministry of Foreign Affairs (Republic of Korea)
NBER	National Bureau of Economic Research (US)
NCDDP	National Community-Driven Development Project (Myanmar)
NGO	Non-Governmental Organization
NVMS	National Violence Monitoring System (Indonesia)
ODA	Official Development Assistance
OECD	Organisation for Economic Cooperation and Development
OECD-DAC	OECD's Development Assistance Committee
P4P	Pathways for Peace
PPF	Peacebuilding Partnership Fund (Thailand)
RDA	Rural Development Administration (Republic of Korea)
ROK	Republic of Korea
SDG	Sustainable Development Goal
UN	United Nations
USD	United States Dollars
WBG	World Bank Group
WBG-FCV	World Bank FCV Group

Foreword

Recent crises, transitions, and global security threats show that conflicts continue to be on the rise across the globe. Moreover, conflict and violence today prevent the attainment of crucial development gains or strip away years of development. In this context, we recognize the importance of addressing the challenges posed by fragility, conflict, and violence (FCV) is key to achieving the United Nations Sustainable Development Goals, and to ensure “no one will be left behind.”

As a country that underwent a remarkable and rapid development over the past few decades—from a conflict-affected aid recipient country to the world’s 12th largest economy today, the Republic of Korea is committed to supporting the international community’s efforts to address the challenges posed by FCV. The Korea Trust Fund for Economic and Peace-Building Transitions (KTF), established in 2009 through an agreement between the Ministry of Economy and Finance of Korea and the World Bank Group (WBG), is an important example of such commitment.

2019 marks the ten-year anniversary of the establishment of the KTF. Over the past ten years, the KTF has provided USD 34.6 million to support WBG’s effort towards implementing differentiated approaches to addressing FCV. This report presents the highlights of these achievements across a range of thematic areas including interventions that focus on data and analytics, transitions from FCV, addressing FCV in middle-income countries, regional approaches, and innovative engagements. Over the years, the KTF has also served as an important avenue for strengthening collaboration with Korean institutions to maximize development impact in FCV-affected countries.

On behalf of the Korean Government, I am pleased to present this report. The Republic of Korea continues to recognize issues of FCV as one of the most pressing challenges of our time, and we look forward to building on the achievements and lessons learned over the past decade. We also hope that the WBG will continue to strengthen the dialogue and exchange of knowledge with Korea in addressing FCV and to further partnerships in areas where Korea has a competitive edge.



Dongjoon Kim
Director, Development Finance Division and Development Finance Bureau
Ministry of Economy and Finance
Government of the Republic of Korea

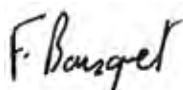
In the last twenty years, the dynamics of fragility, conflict, and violence (FCV) around the world have become more complex and threatened global poverty reduction efforts. Increasingly, extreme poverty is becoming concentrated in societies impacted by FCV. Furthermore, violent conflict has become increasingly transnational and protracted, impacting both low- and middle-income countries. In this context, FCV represents a major obstacle to achieving the World Bank Group's (WBG) mission, as well as the United Nations Sustainable Development Goals.

The first *WBG Strategy for FCV* (2020–2025) represents an important step forward in the WBG's commitment to the FCV agenda and its efforts to enhance development support for impacted countries and the most vulnerable communities. The International Development Association (IDA) 18th and 19th replenishments have also been critical to significantly scale up the WBG's engagement and financing to address the drivers and impacts of FCV.

The Korea Trust Fund for Economic and Peace-Building Transitions (KTF) has played an integral role in the WBG's engagement in FCV settings. Since its establishment in 2009, the KTF has complemented IBRD and IDA financing to offer flexible and timely financing in challenging situations. KTF resources have enabled the WBG to pilot innovative approaches and rapidly respond to emergency situations. To date, the KTF has supported 57 FCV interventions in 46 countries across the six regions.

This report celebrates ten years of partnership between the WBG and the Republic of Korea in addressing FCV issues around the globe. It takes a closer look at the results and progress achieved over the past ten years with highlights from various programs supported by the KTF as well as partnerships fostered with Korean institutions.

I would like to acknowledge and thank the Ministry of Economy and Finance of the Republic of Korea for their support on this important agenda over the past ten years, and I look forward to our continued partnership in addressing one of the greatest challenges of our time.

A handwritten signature in black ink, reading "F. Bousquet". The signature is written in a cursive, flowing style.

Franck Bousquet
Senior Director, Fragility, Conflict and Violence Group
World Bank

Introduction

Global fragility is a critical development challenge that threatens efforts to end extreme poverty, affecting both low-and middle-income countries (MICs). Violent conflicts have risen to the highest levels seen in the past three decades. The world is also facing a forced displacement crisis that has created 70.8 million refugees—internally displaced people and asylum-seekers—as of the end of 2018. Furthermore, rising inequality, lack of opportunity, and exclusion are fueling grievances and perceptions of injustice. Additionally, climate change, demographic change, migration, technological transformations, illicit financial flows, and violent extremism are often interconnected, posing risks that transcend borders. Many countries also suffer from chronically poor governance. These factors can increase vulnerability to shocks and crises and can create regional and global spillovers that cause devastating impacts that could be felt for generations, especially for women, children, and youth. Without swift and effective action, fragility, conflict, and violence (FCV) can both erode gains made in the fight against poverty and undermine the prospects for future progress.

This past year, 2019 marked the ten-year anniversary of the partnership between the World Bank Group (WBG) and the Government of Korea to address FCV challenges. Established in 2009—through an agreement between the Ministry of Economy and Finance of Korea (MOEF) and the WBG—the Korea Trust Fund for Economic and Peace-Building Transition (KTF) is an important vehicle for addressing FCV issues in support of Korea's interest in increasing the impact and effectiveness of its Official Development Assistance (ODA), particularly in fragile and conflict-affected countries.

Over the last ten years, the KTF has supported the WBG's peacebuilding initiatives and interventions to facilitate recovery and economic transitions by capturing and disseminating knowledge and piloting innovative approaches to help WBG client countries plan and implement strategies and investments addressing FCV. Building on the success and lessons learned from the implementation of the first phase, in 2017, the Government of Korea and the WBG agreed to extend the KTF's work into a second phase (Phase Two). Within Phase Two, the KTF emphasizes a more comprehensive understanding of transitions that considers economic, social, political, and security dimensions and promotes stronger collaboration with humanitarian and peace actors. Moreover, the KTF's objective of maximizing development impact in FCV-affected countries is in alignment with Korea's *ODA Strategy for Supporting Fragile Countries*.





Photo © United Nations

With a net value of over USD 34.6 million (as of June 30, 2019), the KTF has financed country-specific and regional interventions in 46 countries across all six regions in which the WBG works. At the country level, for example, grants have supported analytics and technical assistance projects that informed the Country Partnership Frameworks in Myanmar and the Philippines. KTF-funded interventions have also provided support across regions, advancing climate-smart agricultural technologies for FCV-affected populations in Africa and strengthening land registration systems in post-conflict countries in Eastern Europe. The KTF has also funded global-level work focused on piloting approaches and instruments that address the challenges of working in FCV settings. For instance, the Geo-Enabling Initiative for Monitoring and Supervision (GEMS) has been implemented across FCV contexts globally, exemplifying the scale and scope that global-level interventions can have. Additionally, the KTF has fostered collaboration with Korean institutions and experts on the FCV agenda. Since its establishment, the KTF has facilitated 11 knowledge exchanges or technical visits between the WBG and Korean development partners and stakeholders, with representatives from over 25 client countries visiting Korea for these exchanges.

This booklet presents a range of projects that the KTF has financed at the country, regional, and global levels, and showcases examples of partnership activities between the WBG and Korean institutions over the last decade. Hopefully, these examples can demonstrate how sustained efforts and partnerships have critically contributed to strengthening the FCV agenda in development activities. There is an old Korean saying that highlights the significance of a decade—“With ten years, even mountains and rivers are changing.” Over the past decade, the WBG has significantly scaled up its engagement and resources to address FCV challenges worldwide, and trust funds such as the KTF have played an integral role in strengthening the WBG’s response to FCV settings. While our approach to, and understanding of, FCV has evolved in the last ten years, some important things remain unchanged: the shared vision of the WBG and the MOEF of reducing extreme poverty and boosting shared prosperity as well as our commitments to maximizing development impact in FCV settings through partnerships and collaboration. Built on a decade of fruitful partnerships and a forthcoming *WBG Strategy for FCV*, the KTF hopes to continue supporting the countries, communities, and people who are most vulnerable to FCV challenges to pioneer a new future.

Timeline: KTF, Korea and the WBG-FCV

2009

KTF

Signing of the Memorandum of Understanding to establish the KTF



2010

Republic of Korea (ROK)

Joining the Organisation for Economic Cooperation and Development's Development Assistance Committee (OECD-DAC)



2011

KTF

First KTF grant: *Indonesia's National Violence Monitoring System*

WBG-FCV

Launch of *World Development Report 2011: Conflict, Security and Development*



2015

KTF

Total cumulative contribution to the KTF by ROK reaches USD 23.82 million

Korea Week 2015 Side Event: *Perspectives on Economic Transitions*

WBG-FCV

Adoption of the United Nations (UN) Sustainable Development Goals (SDGs) including SDG 16 on Peace, Justice, and Strong Institutions



2013

KTF

First KTF partnership activity in Korea: *Global Leadership Training Course on the G20 and Peacebuilding* at the KDI School of Public Policy and Management

ROK

Opening of WBG Korea Office



2016

KTF

Convening of a *Knowledge Exchange on Rural Community-Driven Development in Fragile and Conflict-Affected Countries*



2017

KTF

Signing of the KTF Phase Two

ROK

Release of *ODA Strategy for Supporting Fragile Countries*

WBG-FCV

Launch of IDA18, including the doubling of resources available for IDA countries affected by FCV at USD 14 billion



2019

KTF

Undertaking the *WBG Strategy for FCV* consultations in Korea

ROK

Drafting of a *Revised Humanitarian Assistance Strategy to Strengthening the Humanitarian, Development and Peace Nexus*

WBG-FCV

Launch of global consultation processes for the *WBG Strategy for FCV*



2018

KTF

First Project of Phase Two Approval: *Supporting Peaceful Transitions in Myanmar*

Dissemination Event in Korea: *Pathways for Peace: Inclusive Approaches to Preventing Violent Conflict*

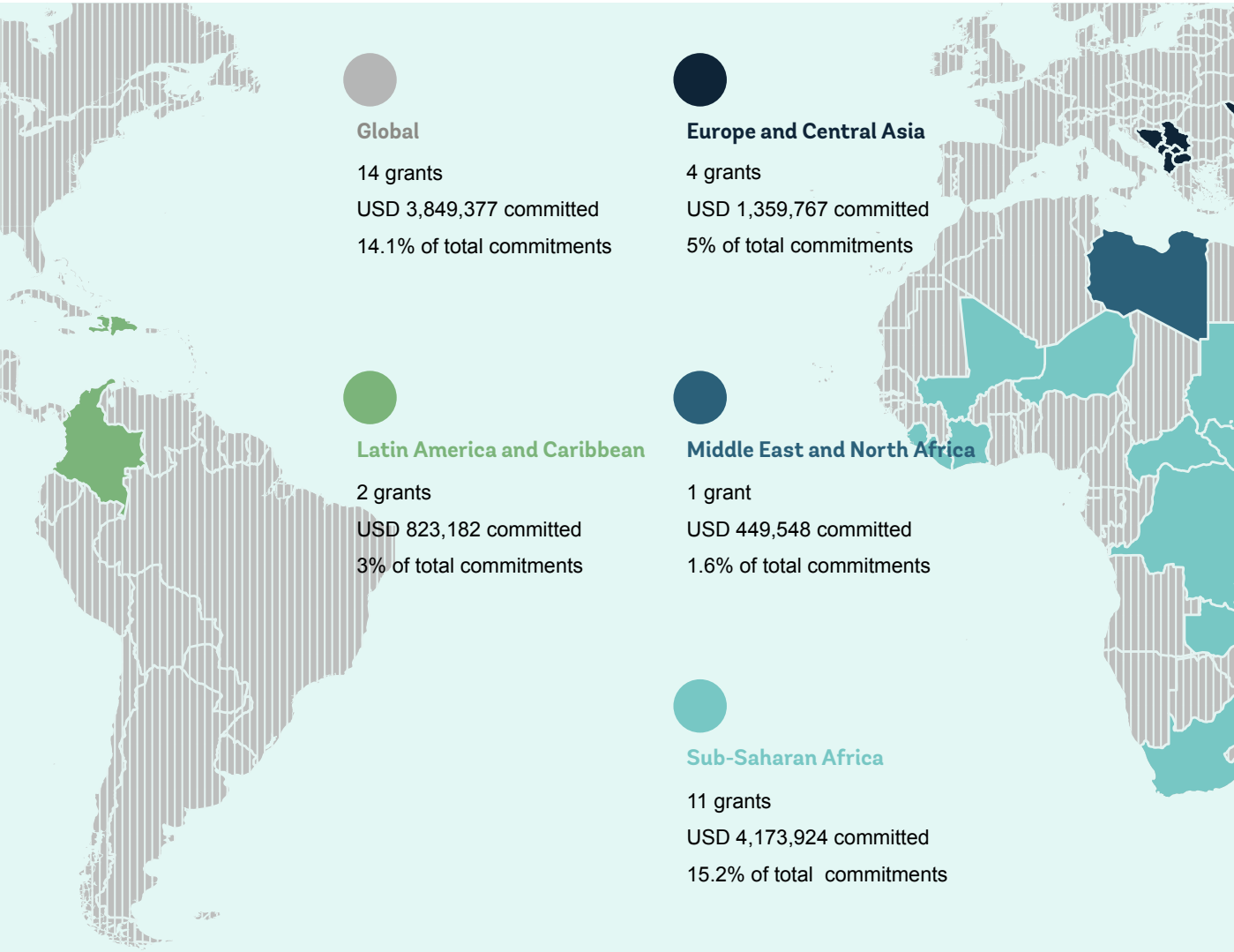
WBG-FCV

WBG Shareholders' Endorsement of a *Capital Package for IBRD and IFC* including a USD 13 billion paid-in capital increase and an ambitious set of internal reforms and policy measures

Launch of *Pathways for Peace: Inclusive Approaches to Preventing Violent Conflict*, a joint United Nations and World Bank study



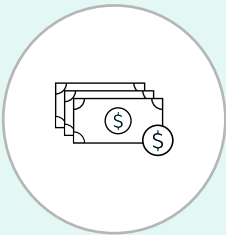
KTF at a Glance



* Includes countries covered under regional grants.
Data as of June 30, 2019.



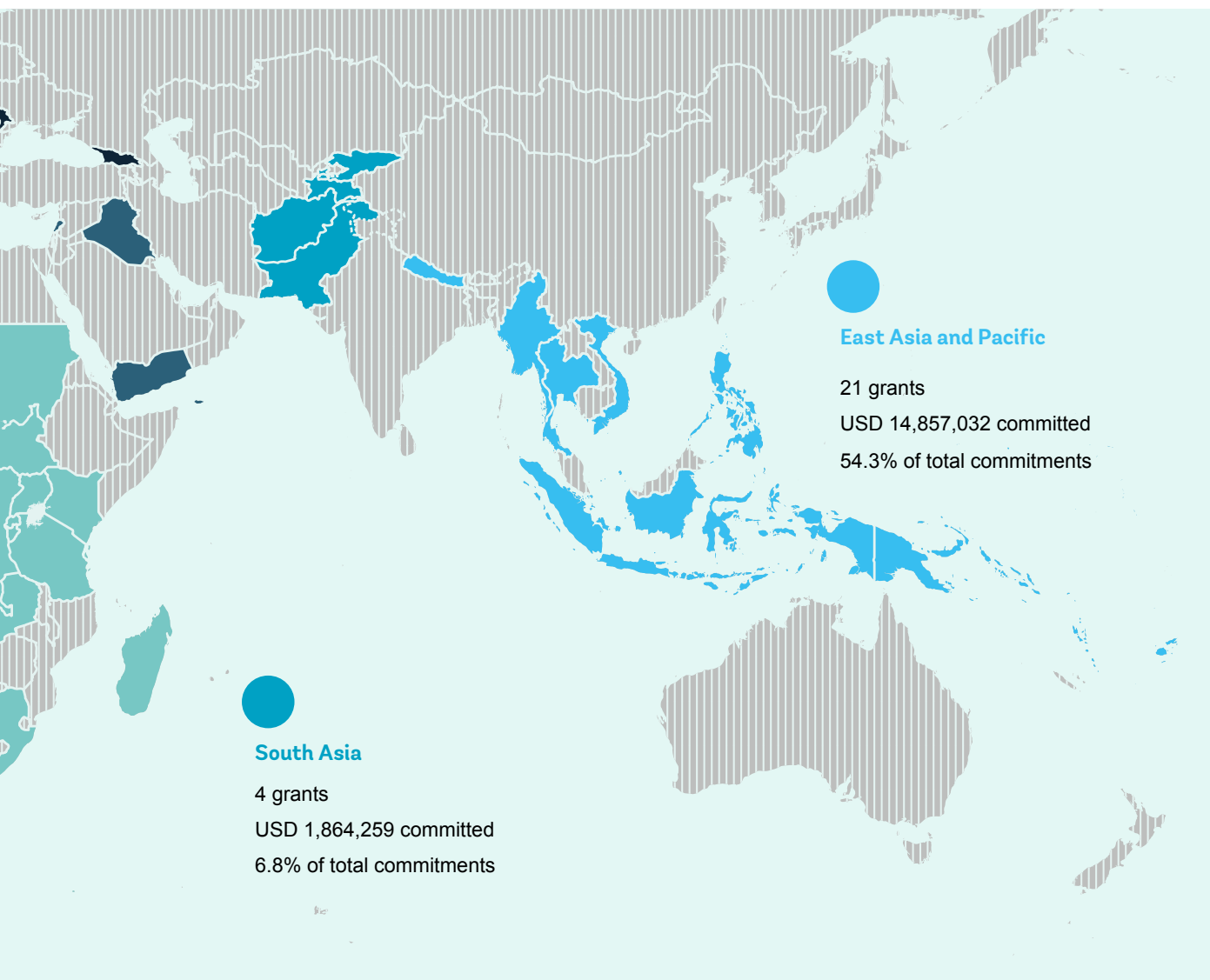
\$34.6m
fund value



82%
committed



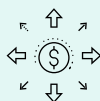
65%
disbursed



6 regions and
global-level targeted



42 grants
completed



46 countries
reached



15 grants
active



57 grants
funded



\$22.6m in cumulative
disbursements

KTF Project Stories

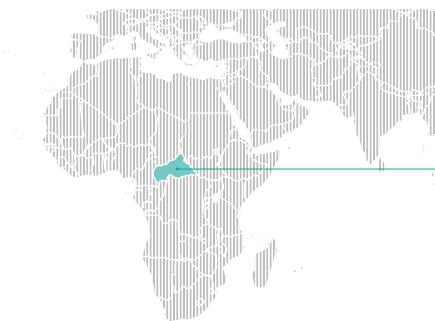
As FCV often create complex development challenges, innovative and practical solutions are required. Through the KTF, WBG teams have been able to undertake innovative, timely, and conflict-sensitive development interventions across all six WBG regions. The stories featured in this section showcase activities at the country, regional and global level that the KTF has funded in the past decade. With a strong geographical focus on Asia and Pacific, MICs with subnational violence such as the Philippines and Thailand and transitional countries such as Myanmar have benefited from steady support from the KTF.

This section also features a number of KTF supported regional projects focused on a range of FCV issues such as land and displacement, weak capacity on citizen engagement, a limited institutional capacity to comply with social and environmental safeguards and the absence of reliable data on employment. As a champion of innovative ICT-based engagements in FCV, the KTF has also invested in pioneering projects such as the GEMS, supporting one of the FCV Policy Commitments in the upcoming IDA19, which will begin in July 2020. Out of 54 grants that the KTF has supported in 46 countries and six regions in the last ten years, this section presents 12 project stories. They showcase a wide range of peacebuilding initiatives and interventions that the KTF has supported to facilitate recovery and economic transitions, especially in Asia and Pacific.



Support to Transitions from FCV

Countries that are struggling to escape the fragility trap can present major risks to their neighbors by becoming hubs for extremist groups and trafficking organizations and contributing to forced displacement to neighboring countries. Deep and protracted fragility can also exist at a subnational level. In these situations, it is critical to focus on sustained engagement, adaptability, flexibility, and presence on the ground in order to support recovery and transitions out of fragility.



Country, Region	Central African Republic, Africa
Project	Strategic Early Response
Amount	USD 417,680
Duration	2014–2016

The Central African Republic (CAR), a landlocked country with a population of close to 4.9 million, embarked on a long recovery process following a major security crisis in 2013 that unraveled its social fabric and displaced over 25 percent of its population. The crisis prompted a multi-faceted international response, including UN-led peacekeeping operations and interventions from a range of humanitarian agencies and development partners. The elections in 2016 brought an end to three years of political transition and turmoil.

KTF-Supported Activities: Between 2014 and 2016, the KTF funded a range of activities that helped improve the WBG’s response in the CAR. Specifically, the grant commissioned a set of analytical studies to improve the WBG’s operations in the country,

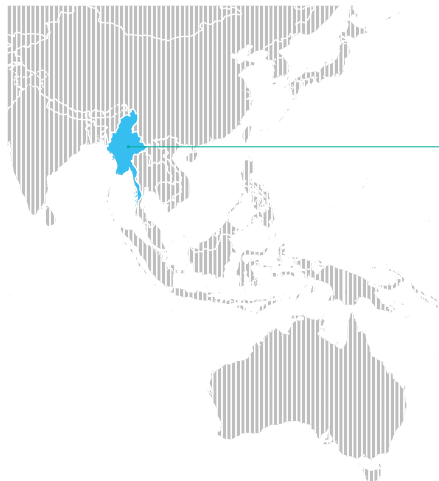
funded a workshop for South-South peer learning on post-conflict Labor Intensive Public Works (LIPW), and supported aid coordination between development partners. The grant also provided support for identifying areas of collaboration among development partners based on their respective comparative advantages.

Impacts: Through the acquisition of useful knowledge and shared learning, the grant made a valuable contribution to the WBG’s work in the CAR at a critical time. For example, the LIPW knowledge exchange provided direct operational and strategic support to the restructuring of two WBG projects. The grant also informed the preparation of an IDA flagship grant operation and led to the creation of a multi-donor LIPW program in the CAR’s capital, Bangui.



“Rapport General de l’Atelier «Mieux Lier Aide Humanitaire et Développement en RCA»,” 2016. Groupe Urgence, Réhabilitation et Développement.

Support to Transitions from FCV



Country, Region Myanmar, East Asia and Pacific
Project Support to the Myanmar Peace Process
Amount USD 2,953,984
Duration 2013–2018

Country, Region Myanmar, East Asia and Pacific
Project Supporting Peaceful Transitions
Amount USD 700,000
Duration 2019–2020

Significant progress has been made in Myanmar’s transition from a planned to an open market economy; from military to civilian rule; and from conflict to peace. Challenges remain, however: the transition to a market economy is incomplete, and violence and human rights abuses continue, notably, the 2017 clashes in Rakhine that led to many deaths and an outflow of over 700,000 Rohingya refugees to Bangladesh. The first phase of KTF’s engagement, which began in 2013, supported the WBG’s scale-up in the country and filled knowledge gaps. A second phase, which started in 2019, builds on this work in three areas: deepening contextual understanding, conducting analytical work, and ensuring the conflict sensitivity of the WBG’s operations.

KTF-Supported Activities: The first KTF grant financed a number

of analyses, which helped shape the direction of the WBG country program. *Contested Areas of Myanmar*, a report published in late 2017, provided the analytic underpinnings of the strategic shift to working more extensively in conflict areas. During the second phase, the KTF supported the production of new data, as well as monthly briefings of members of the WBG management and country team on key political-economy dynamics. The KTF has also funded the development and roll-out of the Inclusion and Peace Lens (IPL) in Myanmar. The IPL is a flagship tool that helps WBG task teams and management screen projects for conflict and exclusion risks and identify opportunities for promoting peace and inclusion. The KTF also supported conflict sensitivity training, led by International Alert, for 700 staff of the National Community-Driven Development

Project (NCDDP) working in one of the more than 20 conflict-affected townships where the project operates.

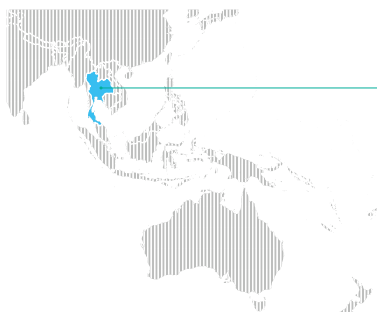
Impacts: Work under the IPL has been shared widely within the WBG and is informing the development of peace lenses in several other FCV countries. The IPL was also featured in the global board paper on FCV issues for the IDA19 replenishment. The success of the KTF-supported country program builds substantially on partnerships with key stakeholders within and beyond Myanmar. The work program is developed and implemented together with local think tanks and researchers, helping to inform the strategy of other development partners in-country through fora such as meetings of the UN Country Team and the ambassador-level Peace Support Group.



Burke, Adam, Nicola Williams, Patrick Barron, Kim Jolliffe, and Thomas Carr. 2017. *The Contested Areas of Myanmar: Subnational Conflict, Aid, and Development*. San Francisco, CA: The Asia Foundation.

FCV in Middle-Income Countries

Fragility, conflict, and violence span a range of country income levels. Most of today’s subnational conflicts are in MICs with relatively strong institutional capacity, regular elections, and capable security forces. Rather than stemming from poverty alone, these conflicts are increasingly linked to a lack of political and economic inclusion and equity, as well as grievances and perceptions of injustice. Over the last ten years, the KTF has supported the WBG’s engagement in MICs affected by FCV and has contributed significantly to enhancing knowledge about development interventions in such contexts.



Country, Region	Thailand, East Asia and Pacific
Project	Expanding Community Approaches in Conflict Situations
Amount	USD 489,796
Duration	2013–2017

In FCV situations, community-driven development (CDD) can offer governments an alternative way to deliver services and provide local infrastructure at scale, even in remote, inaccessible or insecure areas. CDD gives communities a say in how development financing is used by promoting community participatory planning processes to facilitate decision-making and the distribution of investment resources, leading to the more efficient delivery of basic services and measurable gains in access to vital services and poverty reduction.

KTF-Supported Activities: In conflict-affected southern Thailand, the KTF supported the building of an evidence base on how CDD approaches can foster trust among stakeholders. With support from the KTF and the State and Peacebuilding

Fund, the WBG has bolstered peacebuilding efforts in the region for over ten years. Targeting three southern provinces in Thailand, a local capacity-building project expanded participatory community development planning; enhanced local authorities’ capacity to undertake participatory local development activities; and strengthened the capacity of civil society organizations (CSOs) to engage in dialogue on policy issues and peaceful conflict resolution. Through the Peacebuilding and Partnership Fund (PPF), the project also provided 25 grants to local CSOs to strengthen their capacities.

Impacts: The KTF financed implementation support throughout the project timeframe, including an impact evaluation of the CDD component and mid-term and

final assessments of the PPF. The assessment found that the PPF was responsive to peacebuilding challenges in the regional context and that the approach, rooted in locally defined networks, was well positioned to respond to local priorities in culturally sensitive ways.

“Unlike other projects which may belong to certain groups, this project is common property, truly for everybody.”

Wandee Mala, Chairman of Baan Chum Bok Village Project, Southern Thailand



FCV in Middle-Income Countries



Country, Region	Colombia, Latin America and Caribbean
Project	Peace Process Implementation Support
Amount	USD 387,302
Duration	2014–2015

In August 2012, the Government of Colombia started negotiations with the Revolutionary Armed Forces of Colombia (FARC) in Havana, Cuba. These negotiations were perceived as a major milestone in Colombia as they represented the first attempt at dialogue after several previous failed efforts and 60 years of armed confrontation. In 2014, the KTF provided a grant that contributed to strengthening the government's capacity to make informed decisions regarding peacebuilding policies as well as implementation mechanisms.

KTF-Supported Activities:

The grant financed the following components: knowledge generation and analysis in areas identified by the Government of Colombia where the WBG had a comparative advantage, in-time advisory services to support the implementation of

policy recommendations, and knowledge dissemination activities. Specifically, the grant supported i) the development of a framework for understanding key aspects of the peacebuilding exercise; ii) a technical review of the reintegration policy and approach in Colombia to inform the preparation of the institutional structure for a potential disarmament, demobilization and reintegration program for FARC ex-combatants; and iii) three analytical studies. These studies covered diverse topics, including i) crime and violence in the aftermath of an armed conflict and how public policy can effectively address post-conflict violence; ii) local governability in conflict-affected zones; iii) the development of a methodological guideline for carrying out communication programs for building citizen trust in institutions in sub-national areas affected by

violence and with low levels of state presence.

Impacts: The grant contributed by supporting the Government of Colombia's readiness and ability to deliver timely and effectively on the post-conflict commitments and emerging agreements of peace negotiations in Havana. In addition, the grant helped increase the understanding of civil society's role in the peacebuilding process and built trust in state institutions through two knowledge products. Applied knowledge generated by the project supported policy dialogue with the government during the transition to peace and promoted the WBG's role as a trusted knowledge broker in peace and development interventions.



FCV in Middle-Income Countries



Country, Region Philippines, East Asia and Pacific
Project Supporting Inclusive Peace in the Bangsamoro
Amount USD 469,924
Duration 2013–2016

Country, Region Philippines, East Asia and Pacific
Project Supporting the Foundations of Sustainable Peace In Mindanao
Amount USD 1,464,907
Duration 2014–2017

Following over four decades of armed conflict in the Autonomous Region in Muslim Mindanao (ARMM), in October 2012 a preliminary peace agreement was signed between the Government of the Philippines and the Moro Islamic Liberation Front (MILF). The agreement called for the establishment of a new autonomous entity, which fulfills the Muslim-majority Moro people’s demand for self-determination. In early 2019, with the passing of the Bangsamoro Organic Law (BOL, also known as Bangsamoro Basic Law), the Bangsamoro Autonomous Region of Muslim Mindanao (BARMM) was created. This is a significant milestone and promises new hope for the Bangsamoro people, a population of about 4.4 million belonging to 13 ethnolinguistic groups. The KTF financed two major projects in Mindanao.

KTF-Supported Activities: In the preparation of the Bangsamoro Basic Law the KTF brought together civil society networks, academics and transitional institutions to discuss the economic development aspects of the law. Technical assistance was also provided to the Bangsamoro Development Agency (BDA), the development arm of the MILF. This assistance was focused on the drafting of the six-year “Bangsamoro Development Plan” aimed to direct development efforts in the new political entity. Another grant addressed the challenges of weak governance, insecurity, and unemployment through support for new policies and programs aiming to create jobs, accountability mechanisms, and ex-combatant programs. A needs assessment was designed to help bring ex-combatants into productive

employment and improve security conditions. The grant also financed the *Mindanao Jobs Report*, which was cited in the government’s new Strategic Framework for Peace and Development in Mindanao.

Impacts: The inclusive approach of the KTF’s activities in Mindanao increased the buy-in of multiple, often opposing constituencies. It helped build confidence in the peace process, thereby laying the groundwork for longer-term institutional transformation. The KTF supported the creation and functioning of four key transitional institutions, including the Bangsamoro Transition Commission. The KTF also helped build the capacity of the BDA to identify and implement key development interventions.

Articles and Columns Referencing KTF-Funded Projects in the Philippines



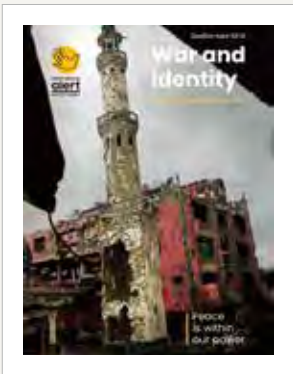
Brown, Calin. 2017. "How to Better Understand Violence in Southeast Asia." *The Diplomat*, February 1.



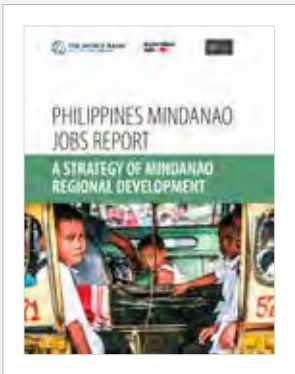
Lumawag, Reuel John F. 2018. "Agriculture: Key to Mindanao's Growth" *SunStar PHILIPPINES*, April 8.



Jerusaelm, Jigger J. 2018. "MindA says economic growth to resolve conflict in Mindanao." *Davao Today*. Aug 23.



Conflict Alert. 2018. *War and Identity*. Manila, the Philippines: International Alert Philippines.

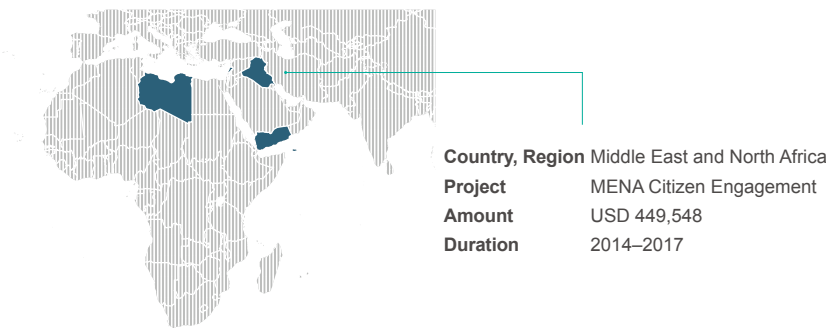


Hansl, Birgit et al. 2017. *Philippines Mindanao Jobs Report: A Strategy for Mindanao Regional Development*. Washington, DC.: World Bank Group.



Regional Approaches to FCV

FCV challenges are increasingly becoming international—they cross borders and produce regional and global spillovers that often spiral into multidimensional crises. In a world where communications, finance, crime, and ideas flow across borders, many conflicts have evolved into complex systems with international, regional, national, and communal links. This explains in part why it is so challenging to effectively address FCV. Building on this understanding, the KTF has supported a number of regional projects.



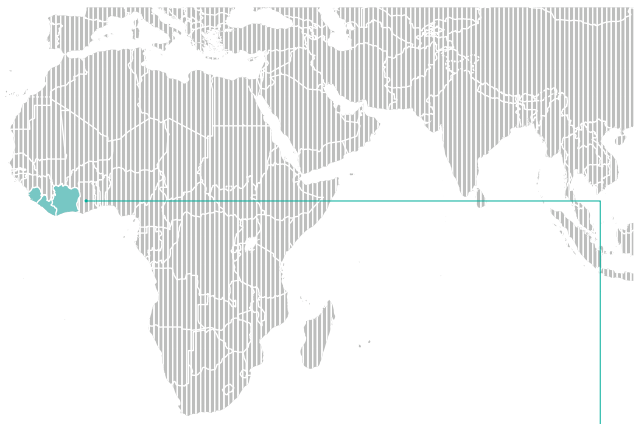
Citizen engagement (CE) refers to transparent and effective processes that foster greater citizen voice and participation in the preparation, implementation, monitoring and evaluation of policies, programs and projects. Strong CE increases transparency and accountability for timely service delivery and builds trust in governing institutions. Since January 2011, citizens in the Middle East and North Africa (MENA) region have asserted their rights for more inclusive states—states that are willing to broker new social contracts that better reflect the aspirations of ordinary citizens who seek equitable progress. However, given weak state legitimacy, low capacity on CE, and damaged state-citizen compacts, applying CE in countries affected by FCV, including many in the MENA region, presented challenges.

KTF-Supported Activities: The KTF funding provided technical assistance to clients and WBG teams across the MENA region to support citizens’ voices in policy-making decisions and public service. As a pilot initiative in Iraq, Yemen, the West Bank and Gaza, Libya, and Lebanon, the grant identified entry points for CE and designed CE mechanisms tailored to post-conflict and fragile contexts. Specifically, the grant financed three types of activities: working papers for strategic input, technical support on the integration of CE mechanisms in existing projects in the MENA region, and knowledge sharing and the capturing of lessons learned to disseminate best practices. The projects supported by this grant include Lebanon’s Emergency Health Care Restoration Project, the National Poverty Targeting Program, and the West Bank and Gaza Cash Transfer Project.

Impacts: The grant contributed to improving institutional trust and legitimacy of existing projects at a municipal level, as in the case of the West Bank and Gaza Municipal Development Project. For example, nearly 90 percent of the citizens surveyed responded that they found municipal services improved after the establishment of Citizen Service Centers. Across the West Bank and Gaza, similar approaches to CE have been scaled up by development partners across the entire municipal sector. The learning from this pilot project was captured in a regional Collaboration for Development online platform where WBG staff, clients, and others can share their experiences and knowledge.



Regional Approaches to FCV



Country, Region	Côte d'Ivoire, Sierra Leone, and Liberia, Africa
Project	Jobs Analysis in Fragile and Conflict States in Sub-Saharan Africa: Employment Opportunities and Constraints
Amount	USD 474,250
Duration	2013–2016

The World Development Report 2013: Jobs found that because of their contributions to livelihoods, poverty reduction, social cohesion, and stability, jobs can provide alternatives to violence, especially for youth. In addition, a regional flagship report, *Youth Employment in Sub-Saharan Africa*, stressed that jobs and youth employment are priorities across Africa, especially in fragile and conflict-affected states (FCSs). However, despite the recognition of the importance of jobs, interventions that target improved employment opportunities for youth suffer from the limited knowledge base on jobs and job creation in Africa in general and FCSs in particular. In most FCS countries, data on jobs are nonexistent, outdated, or of poor quality. The KTF funded a regional project focused on improving the availability and quality of data and

analysis for informing employment policies and operations in three Western African FCSs: Côte d'Ivoire, Sierra Leone, and Liberia

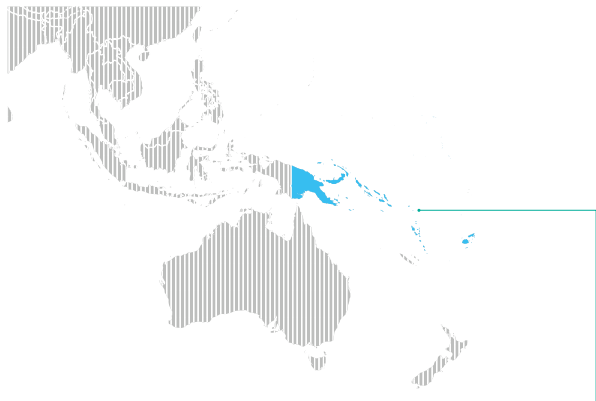
KTF-Supported Activities: The KTF supported the data collection, analysis, and production of several country-specific job reports: the *Côte d'Ivoire Employment Survey Report*, technical assistance and background chapters for *Côte d'Ivoire Jobs Diagnostic*, the *Sierra Leone Labor Force Survey Report*, and the *Liberia Household Enterprise Report*. In addition, the grant supported the development of a qualitative toolkit that assessed constraints and opportunities for the household enterprise sector in FCS settings with a focus on Côte d'Ivoire, Sierra Leone, and Liberia. In Liberia, the work directly informed the WBG's ongoing partnership with

the government regarding social protection and youth employment, and in Sierra Leone, the grant informed the design of the Labor-Intensive Works Project and the Youth Employment Project.

Impacts: The team was able to support the governments in three FCSs in their efforts to develop new survey instruments with innovative elements (e.g., household enterprise and farming modules) well-tailored to the fragile context. The project put in place strong monitoring systems for the collection of national labor market data to ensure high-quality data and supported the collection of new and reliable employment data. For example, the funding allowed the Sierra Leone government to collect the first official labor market statistics in 30 years.



Regional Approaches to FCV



Country, Region	Pacific Island Countries, East Asia and Pacific
Project	Strengthening Local Capacity and Project Implementation
Amount	USD 494,661
Duration	2013–2016

Across the Pacific region, several Pacific Island countries are facing a host of challenges hindering the achievement of development outcomes. These stem from their geographic isolation and dispersion, limited institutional and human capacity, and vulnerability to economic shocks and natural hazards. These multidimensional fragility risks pose significant challenges for an integrated response to emerging risks.

KTF-Supported Activities: The KTF funded activities helped to address project implementation challenges in these fragile and small states, particularly with respect to fiduciary and social safeguards compliance. The grant provided hands-on capacity building on procurement and financial management, as well as safeguards for the government representatives

working on 23 projects in the region. A lessons-learned paper on strengthening capacity and building implementation in these fragile and remote island states was completed as part of this project.

Impacts: The KTF-funded activities improved the project implementation capacity of these island states and strengthened government procurement and financial management systems across the Pacific region. This grant also improved the knowledge and application of safeguards policies and practices. Notably, partnerships established with civil society organizations across the region helped strengthen and improve social accountability. Finally, the grant helped advance a more comprehensive understanding of the dynamics of fragility in Pacific Island

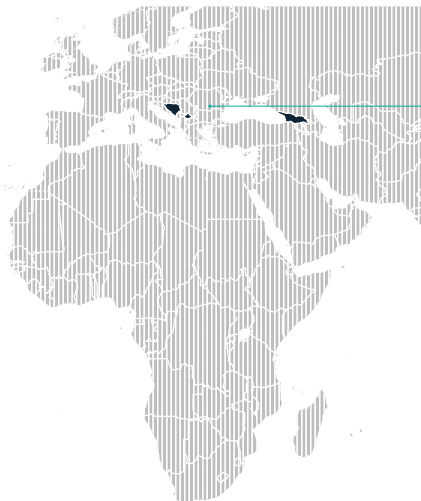
countries and led to the development of effective strategic and operational approaches, which in turn helped build and sustain national capacity. This grant demonstrated that if regional operations are to achieve results and mitigate the impacts of external stresses, adapting to the continuously evolving and contextual features of fragility across the region was required.

“The hands-on capacity building received through the KTF has increased our understanding on procurement, financial management and safeguards, and streamlined project implementation.”

Department of National Planning,
Papua New Guinea



Regional Approaches to FCV



Country, Region	Eastern Europe and Central Asia
Project	Addressing Land and Conflict in ECA
Amount	USD 483,760
Duration	2014–2016

In FCV contexts, competition over access to land, if not properly managed, can quickly escalate into communal violence and tensions. Achieving an equitable and legitimate resolution of land access issues is therefore critical for successful transitions and recovery in post-conflict situations. The legacy of violent conflict, access to land, and the impacts of internally displaced persons pose challenges to countries such as Bosnia and Herzegovina, Georgia, and Kosovo.

KTF-Supported Activities: The grant supported efforts to increase the capacity of the governments of Bosnia and Herzegovina, Georgia, and Kosovo to help vulnerable populations, including displaced persons, secure access to land. This support was focused on enhancing the ability of officials to identify

issues impeding vulnerable groups' access to land, and the development of land projects and policies that adopted special measures to protect vulnerable groups' land rights. This grant supported three projects, namely, the Bosnia Real Estate Registration Project, the Kosovo Real Estate Registration and Cadaster Project, and the Georgia Irrigation and Land Market Development Project.

Impacts: The project-level work and knowledge generated through the grant contributed to the improvement of inclusive and equitable land administration systems and land restitution processes in Bosnia and Herzegovina, Georgia, and Kosovo. Five other countries—Colombia, Côte d'Ivoire, Kenya, Nepal, and South Africa—also benefited from South-South knowledge exchanges. Support

from the KTF further helped sensitize these countries' governments to the special needs of vulnerable groups in FCV settings.



Video Clip Highlighting a South-South Knowledge Exchange Initiative on Land Issues (featured at the WBG website).



Data and Analytics for FCV

Development actors need to think differently about monitoring and evaluation in FCV settings due to the weak data environment. For governments, it is important to improve data collection and monitoring systems for evidence-based policymaking. The KTF has supported projects which track and monitor violent incidents at the subnational and community levels in countries such as Indonesia, Myanmar, and the Philippines.



Country, Region	Indonesia, East Asia and Pacific
Project	National Violence Monitoring System
Amount	USD 2,071,259
Duration	2011–2015

While Indonesia emerged as a peaceful multi-party democracy, this transition has created frequent violence and conflict. A demand for more accurate and systematic monitoring of violence at the community level was needed. Building on data collection efforts on communal violence and social conflicts that had begun in the late 1990s, the Coordinating Ministry for People’s Welfare launched the National Violence Monitoring System (NVMS) in 2012 to improve the country’s capacity to detect and respond to violent incidents.

KTF-Supported Activities: The NVMS—an online platform—monitored and recorded information on collective and inter-personal violence and its impacts. The KTF’s initial support funded data collection, coding and web development, as

well as technical assistance to the Coordinating Ministry to use the data to inform policy responses. It also supported the work of the Habibie Center, an Indonesian think tank that produces analytical studies based on the data. With over 200,000 data entries, the NVMS covered all of Indonesia’s 34 provinces and included baseline data for 18 provinces between 1998 and 2012.

Impacts: The government, academia and civil society used data captured by the NVMS to improve national-level policy planning. For example, the Coordinating Ministry used it to inform response strategies to incidents of violence and conflict, such as the ethnic clashes that took place in South Lampung in 2012. NVMS data were also used to evaluate the implementation of the National Law on the Management of

Social Conflict and a Presidential Instruction on Internal Security. The NVMS also inspired violence monitoring systems in other countries such as the Philippines and Thailand.

“With this type of data, we can follow natural resources conflicts in West Kalimantan as they unfold....We can also debunk ethnic stereo-types associated with violence.”

Fubertur Ipur, Director of NGO Elpagar, West Borneo

Selected Academic Articles and Policy Papers Referencing the NVMS



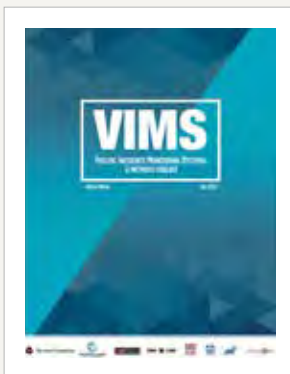
Ansori, Mohammad Hasan, Rudi Sukandar, Sopar Peranto, Fathun Karib, Sofyan Cholid, and Imron Rasyid. 2014. *Post-Conflict Segregation, Violence, and Reconstruction Policy in Ambon*. Jakarta, Indonesia: The Habibie Center.



Barron, Patrick, Sana Jaffrey, and Ashutosh Varshney. 2014. "How Large Conflicts Subside: Evidence from Indonesia." *Indonesian Social Development Paper No. 18*. Washington, D.C.: World Bank Group.



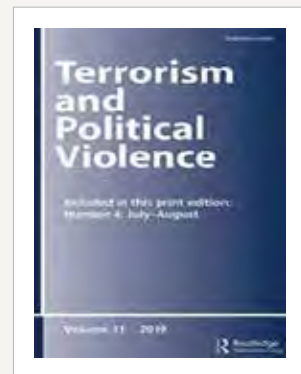
Barron, Patrick, Sana Jaffrey, and Ashutosh Varshney. 2016. "When Large Conflicts Subside: The Ebbs and Flows of Violence in Post-Suharto Indonesia." *Journal of East Asian Studies* 16(2):191-217.



Morel, Adrian. 2016. *Violent Incidents Monitoring Systems: A Methods Toolkit*. San Francisco, CA: The Asia Foundation.



Pierskalla, Jan H. and Audrey Sacks. 2017. "Unpacking the Effect of Decentralized Governance on Routine Violence: Lessons from Indonesia." *World Development* 90:213-228.



S. P. Harish & Risa Toha, 2019. "A New Typology of Electoral Violence: Insights from Indonesia." *Terrorism and Political Violence* 31(4): 687-711.

Articles and Columns Referencing the NVMS in Media



Satria, Alif. 2017. "Regulating Religious Intolerance." *The Jakarta Post*, January 27.



Brown, Calin. 2017. "How to Better Understand Violence in Southeast Asia." *The Diplomat*, February 1.



Emont, Jon. 2017. "Lynched Over an Amplifier: Mob Justice Alarms Indonesians." *The New York Times*, August 30.



Rakmat, Muhammad Zulfikar, Muhammad Randi Ritvaldi, and Hillariana Ikhlas Devani. 2018. "Indonesia's Cyber-Vigilantes on the March." *Asia Sentinel*, June 22.

Philippines:
the Bangsamoro Conflict
Monitoring System



The Bangsamoro Conflict Monitoring System (BCMS) is a subnational conflict database. The BCMS aims to systematically monitor and analyze violent conflict within the Bangsamoro and adjoining areas to inform policy, development, and peacebuilding approaches and strategies. The BCMS works with three academic institutions and relies on several data sources, including the Philippine National Police and media reports focusing on the five provinces in the ARMM (now subsumed as part of the BARMM). Between 2011 and 2017, 14,873 incidents were reported in ARMM. The BCMS was established in 2013 by the International Alert U.K. Philippines Office in partnership with and with funding from the Australian Aid, the KTF, and the WBG.

Myanmar:
Violence Incident Monitoring
System



In Myanmar, the KTF has supported the production of new data on violence. The Myanmar Institute for Peace and Security has been contracted to develop a Violent Incident Monitoring System, which, using international best practice methodologies, tracks violence as it occurs across the country. Work has commenced on building a Conflict Context Portal, which integrates the data from the monitoring system with data on non-monetary poverty indicators along with township political economy analyses. A geospatial web platform is also being developed to allow for enhanced analysis of poverty and violence. Data from the system has been used to help select project locations and to identify potential challenges that projects may face in areas where they will be implemented.



East Asia and Pacific:
Regional Violence Monitoring
Knowledge Exchange

The KTF facilitated the broader adoption of violence-monitoring instruments across countries and encouraged cross-regional learning through a project that consolidated lessons from three existing violence-monitoring initiatives: Indonesia's NVMS, the Philippines' BCMS, and Thailand's Deep South Incident Database. Under this project, a series of exchanges and workshops were conducted to enable the three systems to learn from each other and showcase lessons from these three initiatives for other governments and civil organizations interested in developing similar systems. The workshops took place in Jakarta in December 2014, Manila in October 2015, and Bangkok in June 2016. They attracted participants from Indonesia, Thailand, the Philippines, Myanmar, Nepal, and Kenya. The project has synthesized learning into a practical methodology toolkit to share knowledge about conflict and violence monitoring within the East Asia and Pacific region and across regions.

Innovative Engagements in FCV

In recent years, there has been a growing demand for ICT-based innovative solutions to increase the effectiveness of development interventions in fragile and conflict-affected situations. Various efforts are being made to apply a range of ICT-based solutions such as artificial intelligence, machine learning, remote sensing, blockchain, geospatial analytics, and big data. Despite several implementation challenges in FCV settings, these technologies are being deployed to further refine early warning and proactive risk management, increase the accountability and transparency of development interventions, and improve the delivery of core services in hard-to-reach areas.



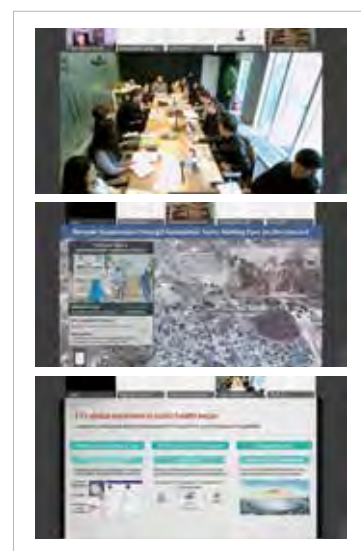
The Geospatial Operations Support Team (GOST) of the WBG applies the latest machine learning tools to current data from phones, drones and satellites to improve transparency and accountability of WBG projects. The team's reach includes FCV settings which a combination of skilled staff and technology has repeatedly been proven to provide insight that cannot otherwise be obtained.

KTF-Supported Activities: The KTF is supporting the GOST's efforts to mainstream these remote monitoring approaches in FCV settings by developing training materials and in- country workshops to guide government agencies, donor counterparts and other stakeholders on the responsible acquisition, application and stewardship of such geospatial data and insight into economic development.

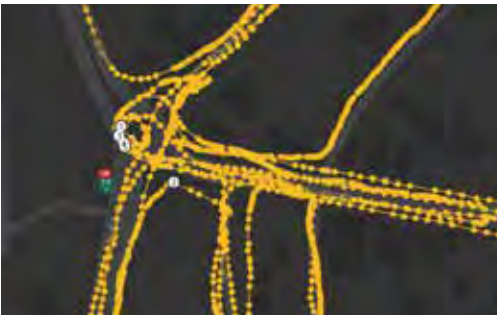
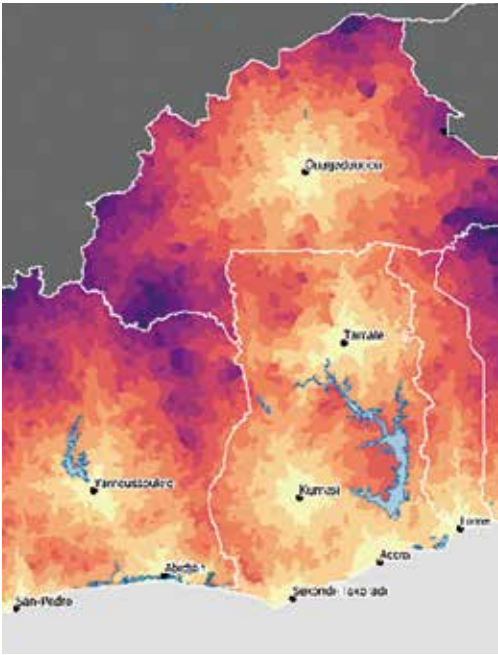
Intended Impacts: Beyond the obvious benefits to other projects, the work of the GOST contributes to increased transparency to operational activities in areas that are difficult to access. It will further set a new standard for the WBG policy on investing in such data for operational oversight in FCV contexts and can also benefit subsequent lending operations that use geospatial data and tools to improve the planning, supervision and evaluation of WBG projects in FCV contexts over the long term.

The GOST project complements the GEMS. While the provide in-situ capacity building for personnel implementing FCV projects by gathering data on the ground, this project expands the field of view, objectivity, and comparability of Project Implementation Unit-level

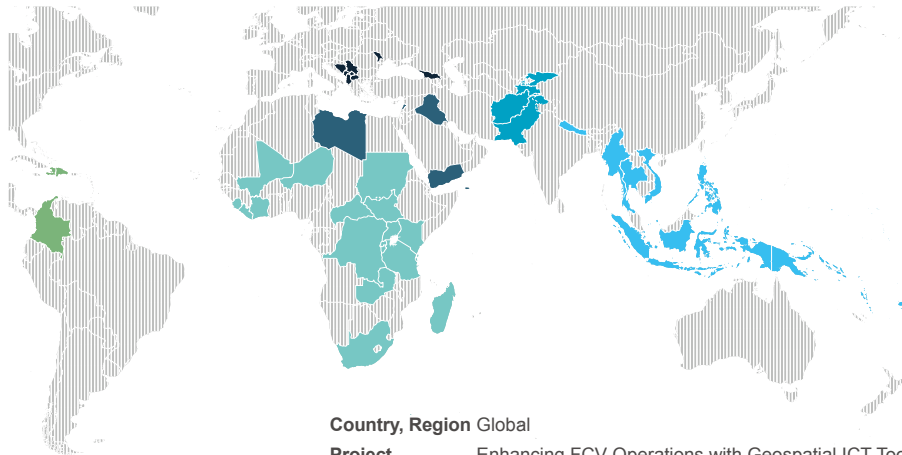
data gathering efforts by bringing in remotely collected data from satellites, drones, and cellphones.



Video Clips Featuring the Project at the Open Learning Campus WBG Korea Office BBL Series: Leveraging Big Data and ICT-based Innovative Solutions for FCV-Affected Situations.



Innovative Engagements in FCV



Country, Region Global
Project Enhancing FCV Operations with Geospatial ICT Tools
Amount USD 500,000
Duration 2019-2020

Country, Region Global
Project Systematic Implementation of ICT-based Support for FCV
Amount USD 500,000
Duration 2018-2019

Information gaps resulting from a lack of reliable insights into dynamics on the ground are a major constraint for the WBG operations in fragile and conflict-affected regions. Limited field access and lack of real-time information in areas facing insecurity or logistical constraints impede project implementation, supervision and risk management.

A grant provided by the KTF and initiated in May 2018 aims to improve the ability of clients, partners and the WBG teams to gather and analyze real-time data from the field, using affordable and contextually-appropriate technology. The grant supported the systematic roll-out of the GEMS across FCV contexts around the world.





This booklet features an interview with Bernhard Metz, a Senior Operations Officer who leads the GEMS initiative, managed by the WBG's FCV Group. Bernhard answered a few questions to explain the use, potential, and results of the initiative. This interview was initially published at the WBG's Feature Story on Nov 19, 2019 "Using "Pocket Science" to Monitor and Supervise Operations in Fragile and Conflict-Affected Settings."

What is the Geo-Enabling Initiative for Monitoring and Supervision (GEMS)?

GEMS is a method that enables project teams to use simple and free open-source tools to collect structured digital data right from the field. This data automatically feeds into a centralized Monitoring & Evaluation (M&E) system. While it is an ICT-based system, our focus does not lie on fancy tools and gimmicks, but on building capacity among clients to use simple solutions for their specific needs.

How does GEMS help address M&E challenges?

One of the ideas of GEMS is to "bring eyes on the ground where we cannot always have feet on the ground." We try to create systematic ways of getting insights into geographic areas where access for development practitioners is either nonexistent or limited due to active conflict, high insecurity, or logistical constraints.

This is especially relevant to situations of FCV. Our motto is *Simplicity is Key for ICT in FCV*—so everything we do builds on straightforward, easy-to-learn methods and free, open-source tools targeted toward local stakeholders working in the field—whether they are staff from

our government clients, partners, or the WBG colleagues.

What results has the initiative achieved so far?

As of December 2019, we have trained about 2,000 clients, partners and field staff covering close to 450 the WBG-funded projects in 30 countries. Through this, data of more than 100,000 sub-projects and activities have been mapped. GEMS has been used extensively in the field including for remote supervision and enhanced M&E of project implementation, risk and safeguards monitoring, beneficiary engagement, and security assessments in Azerbaijan, Burkina Faso, Burundi, Cameroon, CAR, Djibouti, DRC, Guinea, Haiti, India, Indonesia, Kenya, Madagascar, Mali, Mauritania, Myanmar, Niger, Nigeria, Pakistan, Republic of the Congo, Senegal, Somalia, South Sudan, Togo, Uganda, and several Pacific Island States.

What have you learned from the rollout of GEMS?

South Sudan was our pilot country and it proved very challenging. The entire territory, except for the capital Juba, is off-limits for Bank staff, and project implementation teams also face difficulties accessing certain parts of the

country. As you could imagine, the clients were eager to use GEMS to get better insights on the dynamics on the ground, and in real-time. For instance, a health project team used the system to map existing facilities and track the availability of health services in remote areas.

What is next for GEMS?

Going forward, GEMS will deepen its engagement in Sub-Saharan Africa, while expanding its support in other regions, notably East Asia and Pacific, South Asia, Central Asia, and the Middle East and North Africa. A particular focus will be to support the implementation of the IDA19 Policy Commitment to build client capacity in the use of field-appropriate ICT in fragile and conflict-affected contexts. This goes hand in hand with the aim to create a Global Public Good for digital data collection and analysis in fragile settings.



Partnerships with Korean Institutions

Recognizing the value of leveraging Korea's experience and expertise in development work, the KTF has facilitated several partnership activities with Korean institutions over the last ten years. These have fostered knowledge exchange among Korean stakeholders and development practitioners from client countries (including government officials) on a range of FCV-relevant issues. While the first phase of the KTF emphasized knowledge exchanges on FCV issues to share Korean experiences with clients and projects teams in FCV situations, the second phase has facilitated more diverse forms of partnerships. The KTF's partnership work has grown from direct support to projects and awareness-raising on global FCV issues in Korea to leveraging Korean expertise on innovation and technology that could be relevant to FCV settings.

This section introduces selected partnership examples that the KTF has fostered, including the WBG agriculture team's ongoing partnership with the Korean Rural Development Administration (RDA).

Knowledge Sharing and Exchange Focused on Korea's Development Experiences

Improving Collaboration with the G20 and g7+ Group of Fragile States (2013)

Korean Partner: KDI School of Public Policy and Management

In close partnership with the KDI School of Public Policy and Management, the KTF supported knowledge sharing activities that brought together representatives from the G20 and g7+ group of fragile and conflict-affected states. Representatives from 23 countries attended a *Global Leadership Training Course on the G20 and Peace-Building* in 2013 and shared a range of challenges they experience when advancing peacebuilding efforts. This training also provided an opportunity to highlight Korea's development experiences with the participants.



Sharing Korean Expertise on Rural Development with Representatives from Fragile and Conflict-Affected Countries (2016)

Korean Partner: KDI School of Public Policy and Management

In 2016, the KTF supported an exchange program titled "Knowledge Exchange on Rural Community-Driven Development in Fragile and Conflict-Affected Countries," held in Daejeon/Seoul, Korea. Bringing together 14 government representatives from Afghanistan, Kenya, Myanmar, Nepal, and the Philippines, the WBG staff, and experts from nine Korean universities and institutions, the exchange focused on sharing lessons learned from the Korean development experience and promoted peer-to-peer learning among FCV countries. Participants made field visits to the Korean Rural Community Corporation and the Agriculture Technology Center of the Sejong Metropolitan Authority. The exchange concluded with presentations of country-specific action plans of how they could apply elements of the Korean-style CDD to their existing programs.

Building and Facilitating Project-Specific Partnerships

Knowledge Exchange on Community-Driven Development (2019)

KTF Grant: Expanding Community Approaches in Conflict Situations in Thailand

Korean Partner: KDI School of Public Policy and Management

The KDI School of Public Policy and Management co-convened the *International Conference on Sharing Experience on Community-Driven Development Projects in Fragile Areas* with the Southern Border Provinces Administrative Centre of Thailand and the WBG. Held in June 2019 in Pattani, Thailand, the conference provided opportunities for representatives from East Asian countries with subnational conflicts to share their experiences with implementing CDD projects. The KDI School of Public Policy and Management presented and introduced Korea's ODA-funded activities in Myanmar that applied the Korean-style CDD approaches.



Knowledge Exchange on Insect Farming and Production (2019)

KTF Grant: Water-Saving, Climate Smart Frontier Agriculture in Africa's FCV Context

Korean Partner: Korea Rural Development Administration

The project team for the WBG's Agriculture Global Practice visited Korea in August and December 2019 to learn about Korea's insect industry and to discuss potential ideas for applying some of Korea's lessons learned and experiences from the insect industry in WBG operations in FCV contexts. In partnership with the RDA, the team visited several insect farming sites and processing facilities. Korea's experience of fostering the insect industry will inform a publication that the WBG is currently developing.



Photo © Dorte Verner



Partnership Interview with Dr. Heason Bang, Director, Applied Entomology, Rural Development Administration

Can you briefly tell us about your work and how the insect farming technology can contribute to development interventions in FCV countries?

Although Korea's modern insect industry started only ten years ago, it has the best insect farming technology in the world. Korea has also engaged in research on the functional and pharmacological role of insects. For example, three years of clinical trials on cancer patients confirmed that mealworms increase the immunity of cancer patients by 16.9 percent. Moreover, mealworm extracts are known to inhibit certain enzymes that cause Alzheimer's disease. I believe that Korea's experience of growing, producing, and consuming edible insects based on medical and pharmacological research can help developing countries, including FCV countries, to view insect farming as an alternative high-quality agriculture activity for a sustainable future.

What role can Korean institutions specializing in agriculture research and development such as the RDA play in addressing the challenges faced by FCV countries?

Korea rose from the ashes of war and has become one of the major global economies in merely half a century. We did not do this

alone; many international organizations such as the WBG supported our economic recovery efforts. Korea has a debt to repay to the world, and one way to do this could be transferring the knowledge about insect farming techniques. Solving the problem of food shortage by enhancing agricultural technology was at the heart of Korea's rapid economic growth. The RDA has built 20 Korea Project on International Agriculture (KOPIA) centers around the world, and seven KOPIA centers have been built in Africa, including Kenya, Ghana, Ethiopia, and Uganda. I believe that the "Climate-Smart Frontier Agriculture Technologies for FCV-affected Populations and Countries in Africa" project could benefit from working with us and our KOPIA centers in the countries that are interested in Korea's insect farming technology.

This past year, 2019 marked the ten-year anniversary of the KTF. Do you have any words of encouragement for the KTF?

I believe that the WBG's Frontier Agriculture project, with support from the Korean government and Korea's insect farming technology, could make an important contribution to FCV countries. I am very impressed with the KTF's forward-looking vision. KTF has willingly financed innovative and cutting-edge knowledge projects that can make a difference.

Partnerships and Knowledge Sharing

Focused on Global FCV Issues

g7+ Technical Meeting on SDG Monitoring (2016)

Korean Partner: Statistics Korea

The KTF facilitated the participation of two experts from Statistics Korea (KOSTAT) in the g7+ Technical Meeting on SDG Monitoring, held in Nairobi, Kenya in May 2016. The meeting convened approximately 50 participants from the 20 g7+ member countries and representatives from international organizations. During the meeting, g7+ members agreed on common indicators to monitor for the SDGs, identified gaps in monitoring for these indicators, and developed action plans to improve their monitoring capabilities. The two KOSTAT experts learned more about the technical needs of the participants and shared Korea’s experience in developing and managing a comprehensive data management portal.

Introduction to World Bank Approaches to FCV-Affected Situations (2019)

KTF Grant: Systematic Implementation of
ICT-Based Support for FCV

In May 2019, the FCV Group organized a technical workshop in Seoul that provided an overview of the WBG’s global commitments and approaches to addressing FCV situations. The workshop focused on “Risk and Resilience Assessments” and the GEMS and was attended by around forty participants from the Export-Import Bank of Korea (KEXIM), Korea International Cooperation Agency (KOICA), universities, and NGOs and CSOs currently working in FCV situations.



Partnerships and Knowledge Sharing Focused on Global FCV Issues

Consultations on the World Bank Group's FCV Strategy (2019)

KTF Grant: WBG Strategy on FCV—
Building an Inclusive Consultations
Process

In May 2019, the FCV Group organized a series of consultations in Seoul on the WBG's FCV Strategy. The team, led by Dr. Sarah Michael, Practice Manager of the WBG's FCV Group, presented a FCV Strategy concept note highlighting the WBG's proposed approaches and priorities and received recommendations and feedback from the participants. The consultations reached over 40 representatives from the Government of Korea, research institutions, civil society organizations, academia, and the private sector. The inputs derived from these consultations have informed the development of the FCV Strategy.



Leveraging Big Data and ICT-Based Innovative Solutions for FCV Affected Situations (2019)

KTF Grants: Enhancing FCV Operation
with Geospatial ICT Tools and Systematic
Implementation of ICT-Based Support for
FCV

Korean Partner: Korea Telecom

Together with the WBG Korea Office, a seminar was convened in Seoul on the use of ICT innovations for operations in FCV contexts. This seminar featured two KTF supported grants “GEMS (managed by the FCV Group)” and “Enhancing FCV operations with Geospatial ICT Tools (managed by the GOST).” The session also introduced the Global Epidemic Prevention Platform, a mobile application-based platform that uses big data to strengthen the capacity of governments to engage citizens on health-related issues including pandemic preparedness and access to health clinics for rural populations. The platform was developed by Korea Telecom (KT).





***Partnership Interview with Mr. Jong-il Lee,
Director/Team Leader/Social Worker,
Global Sustainability Development Team,
Sustainability Management Unit, KT***

Can you explain briefly about how your company was working on global development issues as part of your corporate social responsibility initiatives?

Since 2016, KT has aligned our corporate sustainability efforts with the SDGs and launched pilot initiatives addressing global development challenges such as health, education, or agriculture through big data and communications technologies. As our flagship initiative focuses on infectious diseases, we have become more familiar with fragile countries due to their vulnerabilities to these health risks. We were glad to introduce our efforts during the WBG Korea Office's BBL Series which the KTF co-convened, and like many companies active in the SDG space, it is important for us to exchange views with various global stakeholders such as the WBG and the UN.

Can you share your views on ways in which companies can contribute to addressing development challenges in FCV?

It was also very encouraging for us to learn about different WBG initiatives leveraging information and communication technologies to address development issues in very difficult operating environments such as fragile and

conflict-affected situations. Many companies are very interested in supporting global development priorities, and SDGs have certainly provided an important momentum. I believe that companies can be a helpful partner to address development issues with our comparative advantages such as the latest technological know-how, resources, and fast-pacing organizational culture. While it will be difficult for companies to imagine initiating corporate social responsibility activities in highly conflict-affected environments, a pilot activity with right partners could take place in fragile countries.

This past year, 2019 marked the ten-year anniversary of the KTF. Do you have any words of encouragement for the KTF?

I was impressed to learn about the KTF which has supported many important development efforts in high-risk environments for the most vulnerable people. I also believe it has made an important contribution over the last ten years to raise the visibility of Korea's commitments to urgent global development priorities. Going forward, by sharing the achievements of the KTF more broadly, the general public in Korea will have become more familiar with the WBG's work on FCV.

Awareness Raising on Global FCV Issues in Korea

Contribution to Korea's ODA Discussion (2018)

Korean Partner: Korea International Cooperation Agency

Patrick Barron, the WBG's FCV Advisor in Asia, presented at "The 12th Seoul ODA International Conference: Inclusive ODA for Global Peace, Democracy and Human Rights" to introduce the WBG's approaches to working in FCV situations. This international conference was attended by more than 800 representatives from the government, academia, private sector, NGOs, and civil society organizations. High-level representatives to this conference included Sung-Soo Eun, Chairman of the Financial Services Commission, Hyun Cho, Ambassador to the UN, Hernani F. Coelho da Silva, former minister, Ministry of Foreign Affairs and Cooperation, the Democratic Republic of Timor-Leste, and Messaoud Romdhani, President, Tunisian Forum for Economic and Social Rights. The FCV Group's participation in this event paved the way to further strengthen collaboration with the KOICA such as the FCV Senior Program Officer's participation in the KOICA SDG 16 Expert Advisory Group (launched in November 2019).

Public Dissemination of the *Pathways for Peace* Report (2018)

Korean Partner: Institute for Global Engagement and Empowerment at Yonsei University

A joint UN–WBG team visited Seoul to disseminate the *Pathways for Peace* report. The event took place at Yonsei University and was co-hosted by the WBG, the UN, and the Institute for Global Engagement and Empowerment at Yonsei University, and co-sponsored by the MOEF, the MOFA, and the KTF. The event reached about 150 participants from across government, international organizations, academia, research institutions, and civil society. In addition, the findings and recommendations of the UN–WBG joint report *Pathways for Peace: Inclusive Approaches to Preventing Violent Conflict*, launched in March 2018, benefited from the support of the KTF through the commissioning of four studies from Princeton University. A Korean researcher affiliated with the Korea Association of International Development and Cooperation participated in the production of these studies as part of the research team.



**Partnership Interview with Dr. Tae In Park,
Research Professor, Yonsei University**

Why is the prevention agenda important for Korean development stakeholders, and what role does your institution play in this regard?

The OECD predicts that at the current rate, more than half of the world's poor will live in societies with high levels of violence by 2030. As elaborated by the *Pathway for Peace*, or P4P, the prevention of conflict is essential for ensuring the sustainable development of fragile states. This issue has become increasingly important to Korea, which has an increased global footprint in FCV settings as a donor country. ODA-financed development interventions would not be effective in situations where protracted fragility and violent conflict are constantly undermining economic growth and social stability. That's why the Ban Ki-moon Center for Sustainable Development at Yonsei University's Institute for Global Engagement and Empowerment, where I work, co-hosted the P4P report dissemination event in Korea with the WBG and participated in the discussion on the establishment of a new FCV strategy. As a researcher and educator on the governance of fragile states and sustainable development, I hope that Korean academia becomes more active in the research on fragile states.

This past year, 2019 marked the ten-year anniversary of the KTF. Do you have any words of encouragement for the KTF?

Since joining the OECD–DAC in 2009, Korea has achieved a notable quantitative growth in terms of development efforts. Despite ODA's quantitative expansion, Korea's support for FCV countries is relatively unsystematic, and its experiences in implementing projects in FCV settings are limited. I hope that the FCV Group will work more closely with Korean ministries and agencies as the Korean government implements its strategy on fragile countries. I also would like to encourage the FCV Group to share the KTF's good achievements over the last ten years with the Korean public. There are quite a few good cases, but they are rarely exposed to the media. I think communicating the KTF's results to the Korean public is valuable because it would show them that their tax money is contributing to this important TF that has been supporting FCV countries for over a decade. Finally, I would like to propose a collaboration with Korean academia. Organizing a conference on KTF would be a good option. I would like to congratulate once again the KTF on its tenth anniversary and hope that the partnership between the WBG's FCV Group and the Korean government and academia will continue to blossom.



***Partnership Interview with Dr. Jisun Yi,
Research Professor, Kyung Hee University***

Could you tell us briefly about your research experience with the Pathway for Peace (P4P) report at Princeton University?

As a Ph.D. student in development studies at King's College London, I joined the P4P project as a guest researcher at the Empirical Studies of Conflict project, or ESOC, at Princeton University. ESOC is a research initiative that focuses on global armed conflict and violence. With consultation from Professor Jacob N. Shapiro, I researched the latest discussion on the prevention and prediction of armed conflict. Specifically, I produced input reports on armed conflict prediction projects and techniques and the flow of foreign aid into conflict situations.

What kind of research on FCV countries are you currently conducting at your institution?
How has your experience with the P4P project informed to your current work?

After I received my Ph.D. degree, I was hired as a research professor at Kyung Hee University's Center for International Development Cooperation and joined the CDP-SSK research group. Led by Professor Hyuk-Sang Sohn, this group brings together 13 influential development scholars in Korea and facilitates diverse research projects with a special reference to comprehensive development partnership for peace and

sustainable development. Within this community, my contribution is conducting focused research on the dynamics between development and conflict in African contexts, which is an extension of the research I conducted at ESOC. As the nexus between conflict and development gradually gains importance in Korea's development policy arena, our research activities are attaining traction from academia and the public. I believe that my time at ESOC has provided me with relevant expertise and further strengthened my research capacity.

This past year, 2019 marked the ten-year anniversary of the KTF. Do you have any words of encouragement for the KTF?

For the last few years, the development community has vibrantly turned to the issues of state fragility, armed conflict, and violence as causes and consequences of underdevelopment. Academic discourses and empirical findings on this topic have been rapidly accumulating; the World Bank's P4P report, in fact, represents the shift in global attention to the issues of conflict and peace. Among others, the partnership between the Korean government and the WBG's FCV Group through the KTF is particularly important because it supports evidence-driven policy discussion for this emerging theme of global development. I hope that the KTF contributes substantially to the development and growth of FCV research and discussion, both in Korea and around the world.

Articles and Columns Referencing KTF-Funded Projects in Korean Media



Kim, Hanjun. 2008. "Korean government provides 25.1 billion won to four international organizations including EBRD." *The Financial News*, November 29.



Lee, Chunghyeon. 2009. "Developing countries need to establish global safety net." *KTV*, October 7.



Hyun, Oh-Seok. 2015. "Let us list Korea's Development Experience as World Heritage." *Maeil Business Newspaper*, June 3.



Kim, Dongho. 2016. "KDI holds rural development training courses for FCV countries." *Yonhap News Agency*, May 31.



Kwon, Hyuk-chul. 2018. "Seoul ODA International Conference opens on the 13th." *The Hankyoreh*, September 11.



Kim, Jiheon. 2018. "Inclusive support for economic development required as international conflicts increase, according to UN and World Bank." *Yonhap News Agency*, October 22.



2018. "UN-World Bank highlights a need for inclusive economic development to counter rising global conflicts." *Maeil Business Newspaper*, October 22.



Park, Yuhwan. 2019. "Using artificial intelligence to predict population suffering from food shortages." *AI TIMES*, April 8.



Yoo, Osang. 2019. "KOICA to appoint 116 new experts in 13 fields as members of its expert committee." *The Herald Business*, November 20.

Articles and Columns Referencing KTF-Funded Projects in Korean Media



Park, Jeongwoong. 2019. "KOICA appoints 116 new experts to achieve SDGs." *Money S*, November 20.



Yoon, Hee-il. 2019. "World Bank pays attention to Korea's world-class insect industry." *The Kyunghyang Shinmun*, December 15.



Cho, Namjoon. 2020. "Dumbbell Economy and Insect Protein." *The Kyunghyang Shinmun*, January 12.

News Clips Featuring KTF-Facilitated Partnership Initiatives in Korea Media



Cha Sang-mi. 2018. "Focusing on prevention of violent conflict is the pathways to peace: UN-WB." *Arirang News*, October 22.



Youmin Chin. 2019. "Exploring to address food security issues through the insect industry." *KBS Jeonju*, December 11.

© 2020 The World Bank Group
All rights reserved.

Disclaimer

This paper has not undergone the review accorded to official World Bank publications. The findings, interpretations, and conclusions expressed herein are those of the author(s) and do not necessarily reflect the views of the International Bank for Reconstruction and Development/The World Bank and its affiliated organizations, or those of the Executive Directors of The World Bank or the governments they represent. The World Bank does not guarantee the accuracy of the data included in this work.

Rights and Permissions

The material in this publication is copyrighted. Copying and/or transmitting portions or all of this work without permission may be a violation of applicable law. The World Bank Group encourages dissemination of its work and will normally grant permission to reproduce portions of the work promptly. For permission to photocopy or reprint any part of this work, please send a request with complete information to the Copyright Clearance Center Inc., 222 Rosewood Drive, Danvers, MA 01923, USA; telephone 978-750-8400; fax 978-750-4470; Internet: www.copyright.com

Graphic Design

Fieldwork

Photo Credits

Unless specific photo credits are stated, all photos featured in this booklet belong to the World Bank Group and the KTF Collection.

For more information on the work of the Korea Trust Fund for Economic Peace-Building Transitions, please contact:

KTF Secretariat / Fragility, Conflict and Violence Group

Address: The World Bank 1818 H Street NW
Washington, DC, 20433 USA

World Bank Korea Office

Address 37F. Boo Young Songdo Tower 2,
241 Incheon tower-daero, Yeonsu-gu, Incheon, Korea
E-mail k-fcv@worldbank.org
Internet www.worldbank.org/en/programs/korea-trust-fund



The Korea Trust Fund for Economic and Peace-Building Transitions (KTF) is a global fund to finance critical development operations and analysis in situations of fragility, conflict, and violence. The KTF is kindly supported by the Ministry of Economy and Finance, Republic of Korea.