

THE WORLD BANK GROUP ARCHIVES

PUBLIC DISCLOSURE AUTHORIZED

Folder Title: Photographs – Eastern Africa - Loan 110 - Volume 2 of 3
Folder ID: 30233017
Fonds: Records of Office of External Affairs (WB IBRD/IDA EXT)

Digitized: September 03, 2014

To cite materials from this archival folder, please follow the following format:
[Descriptive name of item], [Folder Title], Folder ID [Folder ID], World Bank Group Archives, Washington, D.C., United States.

The records in this folder were created or received by The World Bank in the course of its business.

The records that were created by the staff of The World Bank are subject to the Bank's copyright.

Please refer to <http://www.worldbank.org/terms-of-use-earchives> for full copyright terms of use and disclaimers.



THE WORLD BANK
Washington, D.C.

© 2012 International Bank for Reconstruction and Development / International Development Association or
The World Bank
1818 H Street NW
Washington DC 20433
Telephone: 202-473-1000
Internet: www.worldbank.org

PUBLIC DISCLOSURE AUTHORIZED

EASTERN AFRICA - LN 110

Vol. 2

DECLASSIFIED
WBG Archives

The World Bank Group
Archives **30233017**

R2002-110 Other # 48 217 788

Country Photographs - Eastern Africa - Loan 110 - Volume 2 of 3



Inches 1 2 3 4 5 6 7 8

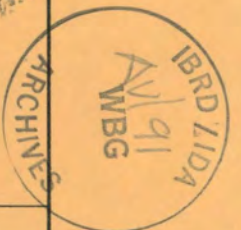
Centimetres 1 2 3 4 5 6 7 8 9 10 11 12 13 14 15 16 17 18 19

KODAK Color Control Patches © The Tiffen Company, 2000

Kodak
LICENSED PRODUCT

Blue Cyan Green Yellow Red Magenta White 3/Color Black





Publication	Date of Issue	Page Number	Publication	Date of Issue	Page Number
<p><u>INTERNATIONAL BANK FOR RECONSTRUCTION AND DEVELOPMENT</u> <u>Washington, D.C. 20533</u></p> <p>110-EA-17 A special ceremony to mark the completion of the new railway was held on the 23rd November, 1956. Here is shown the inaugural train used on this occasion arriving at the terminus - Kasasa, Uganda. The East African Railways and Harbours Administration has been carrying out a program to modernise and expand railways, harbours and road transport in Kenya, Uganda and Tanganyika, with the aid of WORLD BANK funds.</p>	<p>Photo: EARHA</p> <p>November 23, 1956</p>				

IBRD / IDA
AV/91
WBG
ARCHIVES



Inches 1 2 3 4 5 6 7 8

Centimetres 1 2 3 4 5 6 7 8 9 10 11 12 13 14 15 16 17 18 19

KODAK Color Control Patches © The Tiffen Company, 2000

Kodak
LICENSED PRODUCT

Blue Cyan Green Yellow Red Magenta White 3/Color Black



INTERNATIONAL BANK FOR RECONSTRUCTION AND DEVELOPMENT
PHOTO DISTRIBUTION

Publication	Date of Issue	Page Number	Publication	Date of Issue	Page Number
			<p>110-NA-18 An aerial view of the oil installations on Mombasa Island in East Africa. The East African Railways and Harbours Administration has been carrying out a program to modernize and expand railways, harbors and road transport in Kenya, Uganda and Tanganyika, with the aid of WORLD BANK funds.</p> <p>Photo: RAHHA December 1955</p>	<p><u>INTERNATIONAL BANK FOR RECONSTRUCTION AND DEVELOPMENT</u> <u>Washington, D.C. 20433</u></p>	

110-EA-19



Inches 1 2 3 4 5 6 7 8

Centimetres 1 2 3 4 5 6 7 8 9 10 11 12 13 14 15 16 17 18 19

KODAK Color Control Patches © The Tiffen Company, 2000

Kodak
LICENSED PRODUCT

Blue Cyan Green Yellow Red Magenta White 3/Color Black



INTERNATIONAL BANK FOR RECONSTRUCTION AND DEVELOPMENT
PHOTO DISTRIBUTION

Publication	Date of Issue	Page Number	Publication	Date of Issue	Page Number
			<p>110-EA-19 An aerial view of the new lighterage wharf with the new and old dockyards to the left at the Port of Mombasa in East Africa. The East Railways and Harbours Administration has been carrying out a program to modernize and expand railways, harbors and road transport in Kenya, Uganda and Tanganyika, with the aid of WORLD BANK funds.</p> <p>Photo: KANHA</p> <p>December 1955</p>	<p><u>INTERNATIONAL BANK FOR RECONSTRUCTION AND DEVELOPMENT</u> <u>Washington, D.C. 20433</u></p>	



110-BA-20



Inches 1 2 3 4 5 6 7 8

Centimetres 1 2 3 4 5 6 7 8 9 10 11 12 13 14 15 16 17 18 19

KODAK Color Control Patches © The Tiffen Company, 2000

Kodak
LICENSED PRODUCT

Blue Cyan Green Yellow Red Magenta White 3/Color Black



INTERNATIONAL BANK FOR RECONSTRUCTION AND DEVELOPMENT
PHOTO DISTRIBUTION

Publication	Date of Issue	Page Number	Publication	Date of Issue	Page Number
			<p>Photo: EABHA</p> <p style="text-align: right;">December 1955</p>	<p><u>INTERNATIONAL BANK FOR RECONSTRUCTION AND DEVELOPMENT</u> <u>Washington, D.C. 20433</u></p> <p>L10-EA-20 Aerial view of the Port of Mombasa in East Africa, showing the deep-water berths Nos. 1 - 5 with transit sheds, stacking ground and the four new back of port sheds that have been built upon ground that has been obtained by the cutting back of the cliff face. The East African Railways and Harbours Administration has been carrying out a program to modernize and expand railways, harbors and road transport in Kenya, Uganda and Tanganyika, with the aid of WORLD BANK funds.</p>	



110-FA-21



Inches 1 2 3 4 5 6 7 8

Centimetres 1 2 3 4 5 6 7 8 9 10 11 12 13 14 15 16 17 18 19

KODAK Color Control Patches © The Tiffen Company, 2000

Kodak

LICENSED PRODUCT

Blue Cyan Green Yellow Red Magenta White 3/Color Black



Clive Claver
REF-3926

[Redacted]

ke

INTERNATIONAL BANK FOR RECONSTRUCTION AND DEVELOPMENT
Washington, D.C. 20433

110-EA-21 At the edge of the Western Rift Valley in Uganda where the land falls 1,000 feet, a spiral was built to gain the ruling gradient of 1.5 per cent. This railway is part of the East African Railways and Harbours Administration program to modernize and expand railways, harbors and road transport in Kenya, Uganda and Tanganyika and for this program it has received assistance from the WORLD BANK.

Photo: East African Railways & Harbours Nov. 1956

104

1
A

IBRD/IDA
11/9/56
WEG
ARCHIVES

113

110- EA- 22



Inches 1 2 3 4 5 6 7 8

Centimetres 1 2 3 4 5 6 7 8 9 10 11 12 13 14 15 16 17 18 19


KODAK Color Control Patches © The Tiffen Company, 2000

Kodak
LICENSED PRODUCT

Blue Cyan Green Yellow Red Magenta White 3/Color Black



INTERNATIONAL BANK FOR RECONSTRUCTION AND DEVELOPMENT
PHOTO DISTRIBUTION

Publication	Date of Issue	Page Number	Publication	Date of Issue	Page Number
<p>INTERNATIONAL BANK FOR RECONSTRUCTION AND DEVELOPMENT Washington, D.C. 20433</p> <p>110-EA-22 The first passenger train leaving the old station at Changare in East Africa. The East African Railways and Harbours Administration has been carrying out a program to modernize and expand railways, harbors and road transport in Kenya, Uganda and Tanganyika, with the aid of WORLD BANK funds.</p>	<p>Photo: KARHA</p> <p>November 1956</p>				

110-EA-23



Inches 1 2 3 4 5 6 7 8

Centimetres 1 2 3 4 5 6 7 8 9 10 11 12 13 14 15 16 17 18 19

KODAK Color Control Patches © The Tiffen Company, 2000

Kodak
LICENSED PRODUCT

Blue Cyan Green Yellow Red Magenta White 3/Color Black



~~B3~~ ~~Pages~~ ~~40~~

110-EA-23

INTERNATIONAL BANK FOR RECONSTRUCTION AND DEVELOPMENT
Washington, D.C. 20543

110-EA-23 Construction work on No. 10 Berth,
Kilindini Harbour at the Port of Mombasa in East
Africa. This is the site of the collapse of piling
in December 1956.

The East African Railways and Harbours
Administration has been carrying out a program to
modernize and expand railways, harbors and road
transport in Kenya, Uganda and Tanganyika, with the
aid of WORLD BANK funds.

Photo: EAFHA

March 1957

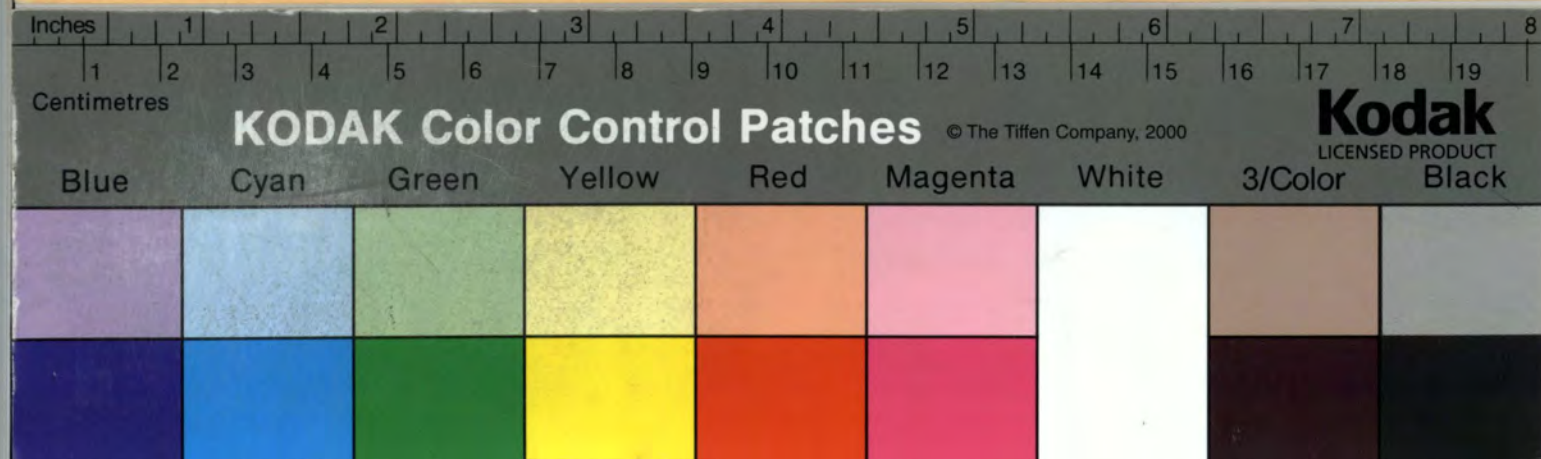



BRANBRIDGE
BOARD
NUMBER 80
TRADE MARK

22 X 30 OR 30 X 40
SINGLE OR DOUBLE
THICK

CHARLES T. BRANBRIDGE

110-5A-24



Publication	Date of Issue	Page Number	Publication	Date of Issue	Page Number
<p><u>INTERNATIONAL BANK FOR RECONSTRUCTION AND DEVELOPMENT</u> <u>Washington, D.C. 20533</u></p> <p>110-21-24 Construction work on No. 10 Berth at Kilindini Harbour at the Port of Mombasa in East Africa. This is the site of the collapse of piling in December 1954.</p> <p>The East African Railways and Harbours Administration has been carrying out a program to modernize and expand railways, harbours and road transport in Kenya, Uganda and Tanganyika, with the aid of WORLD BANK funds.</p>	<p>Photos BARBA</p> <p>March 1957</p>				

110-5A-25



Inches 1 2 3 4 5 6 7 8

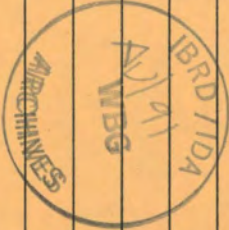
Centimetres 1 2 3 4 5 6 7 8 9 10 11 12 13 14 15 16 17 18 19

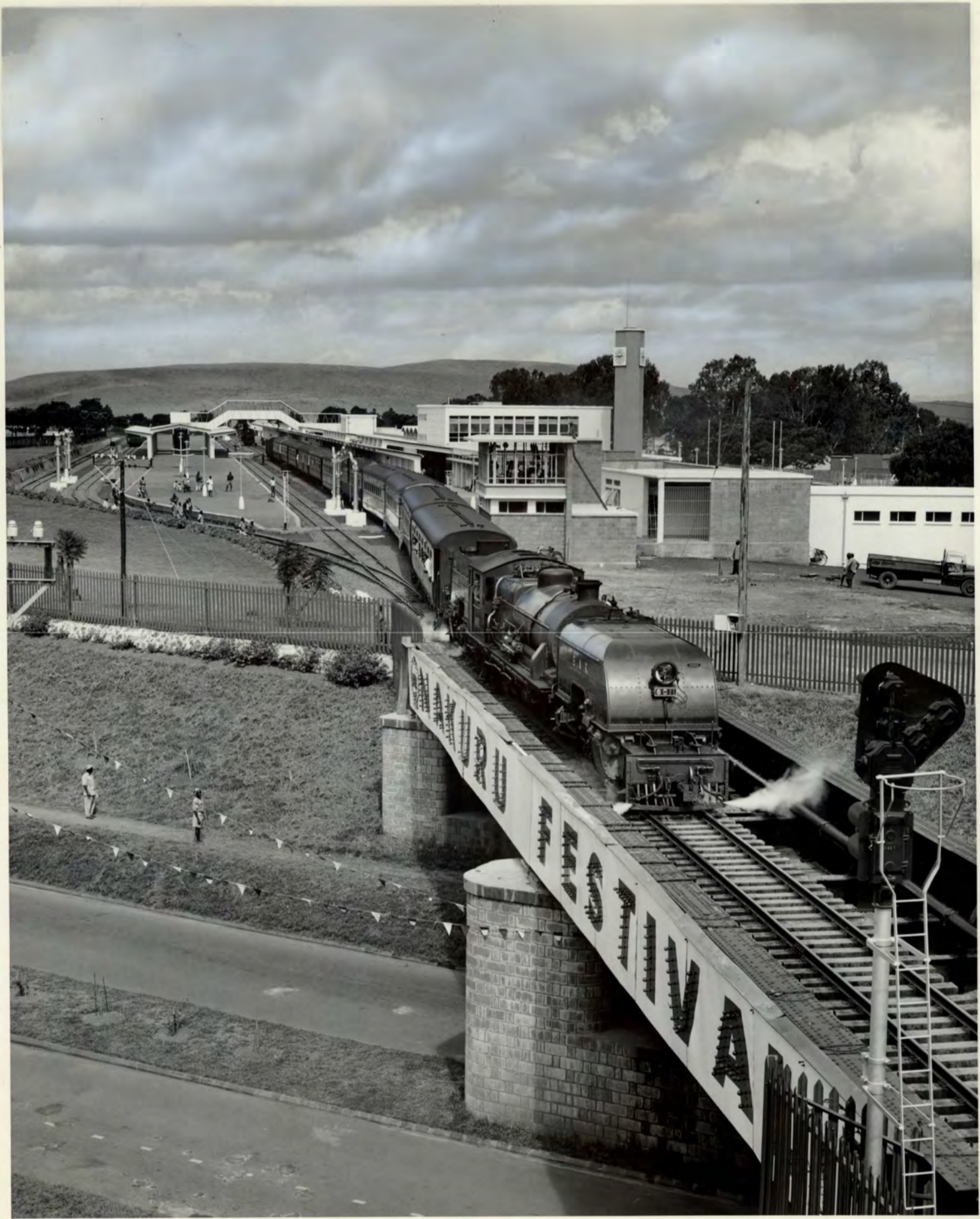
KODAK Color Control Patches © The Tiffen Company, 2000

Kodak
LICENSED PRODUCT

Blue Cyan Green Yellow Red Magenta White 3/Color Black



Publication	Date of Issue	Page Number	Publication	Date of Issue	Page Number
<p><u>INTERNATIONAL BANK FOR RECONSTRUCTION AND DEVELOPMENT</u> <u>Washington, D.C., 20433</u></p> <p>110-2A-25 The opening of Nakuru Station in East Africa on June 14, 1957 marks the virtual end of the development program for this station. The East African Railways and Harbours Administration has been carrying out a program to modernize and expand railways, harbours and road transport in Kenya, Uganda and Tanganyika, with the aid of WORLD BANK funds.</p> <p>Photo: KAKHA June 14, 1957</p>			<p style="text-align: center;">  </p>		



110-FA-26

Inches 1 2 3 4 5 6 7 8
Centimetres 1 2 3 4 5 6 7 8 9 10 11 12 13 14 15 16 17 18 19

KODAK Color Control Patches © The Tiffen Company, 2000

Blue Cyan Green Yellow Red Magenta White 3/Color Black

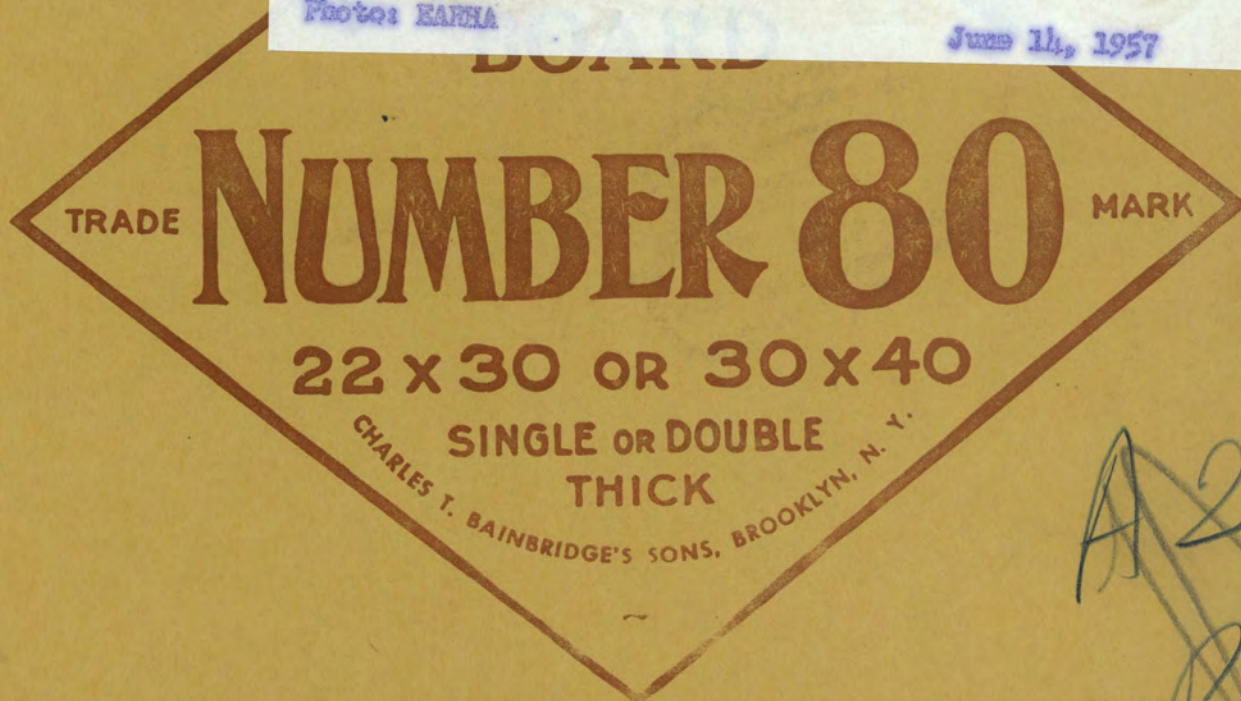
Blue	Cyan	Green	Yellow	Red	Magenta	White	3/Color	Black

INTERNATIONAL BANK FOR RECONSTRUCTION AND DEVELOPMENT
Washington, D.C. 20433

110-EA-26 Inaugural train leaving the station after
the opening of Nakuru Station in Kenya on June 14,
1957. The East African Railways and Harbours
Administration has been carrying out a program to
modernize and expand railways, harbours and road
transport in Kenya, Uganda and Tanganyika, with the
aid of WORLD BANK funds.

Photo: EAFHA

June 14, 1957



A2
Page *A1*

110-EA-26

WITHDRAWN FROM CIRCULATION

110-64-27



Inches 1 2 3 4 5 6 7 8

Centimetres 1 2 3 4 5 6 7 8 9 10 11 12 13 14 15 16 17 18 19


KODAK Color Control Patches © The Tiffen Company, 2000

Kodak
LICENSED PRODUCT

Blue Cyan Green Yellow Red Magenta White 3/Color Black



INTERNATIONAL BANK FOR RECONSTRUCTION AND DEVELOPMENT
PHOTO DISTRIBUTION

Publication	Date of Issue	Page Number	Publication	Date of Issue	Page Number
<p><u>INTERNATIONAL BANK FOR RECONSTRUCTION AND DEVELOPMENT</u> <u>Washington, D.C. 20133</u></p> <p>110-PA-27 Construction of bulk oil jetty at Dar es Salaam, Tanganyika. The East African Railways and Harbours Administration has been carrying out a program to modernize and expand railways, harbours and road transport in Kenya, Uganda and Tanganyika, with the aid of WORLD BANK funds.</p>	<p>Photo: BARHA</p> <p>July 1957</p>				

110-6A-28

WITHDRAWN FROM CIRCULATION



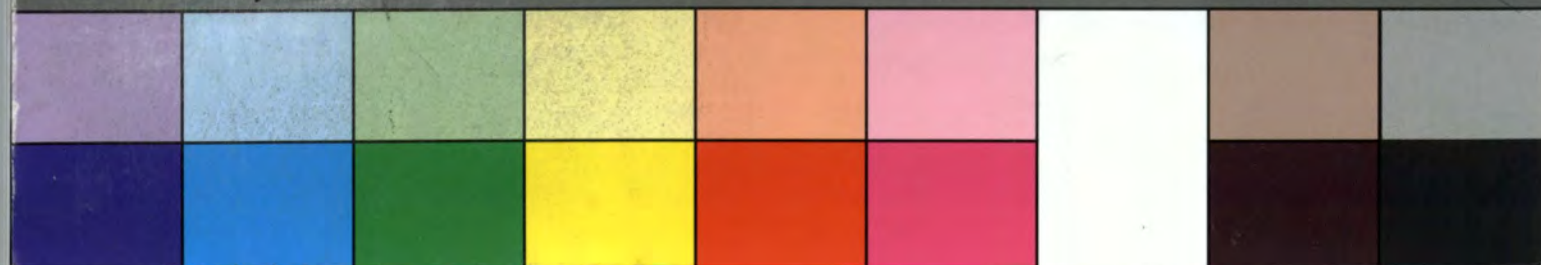
Inches 1 2 3 4 5 6 7 8

Centimetres 1 2 3 4 5 6 7 8 9 10 11 12 13 14 15 16 17 18 19

KODAK Color Control Patches © The Tiffen Company, 2000

Kodak
LICENSED PRODUCT

Blue Cyan Green Yellow Red Magenta White 3/Color Black



110-ER-29



Inches 1 2 3 4 5 6 7 8

Centimetres 1 2 3 4 5 6 7 8 9 10 11 12 13 14 15 16 17 18 19

KODAK Color Control Patches © The Tiffen Company, 2000

Kodak
LICENSED PRODUCT

Blue Cyan Green Yellow Red Magenta White 3/Color Black



INTERNATIONAL BANK FOR RECONSTRUCTION AND DEVELOPMENT
PHOTO DISTRIBUTION

Publication	Date of Issue	Page Number	Publication	Date of Issue	Page Number
<i>Loans at work</i>	<i>1959</i>	<i>4</i>	<p>INTERNATIONAL BANK FOR RECONSTRUCTION AND DEVELOPMENT Washington, D.C. 20433</p> <p>110-EA-30 Beginning its long journey to East Africa from a British port, this new oil-burning locomotive is one of many being acquired as part of the modernization and expansion program of the railway network of Kenya, Tanganyika and Uganda being carried out with the aid of WORLD BANK funds.</p> <p>Photo:</p>		



Page 4-5

124

110-EA-31



Inches 1 2 3 4 5 6 7 8

Centimetres 1 2 3 4 5 6 7 8 9 10 11 12 13 14 15 16 17 18 19

KODAK Color Control Patches © The Tiffen Company, 2000

Kodak
LICENSED PRODUCT

Blue Cyan Green Yellow Red Magenta White 3/Color Black



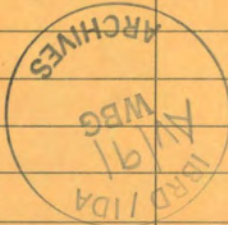
INTERNATIONAL BANK FOR RECONSTRUCTION AND DEVELOPMENT
Washington, D.C. 20433

110-EA-31 Petrol and oil installations at the Port
of Dar es Salaam in Tanganyika.

The East African Railways and Harbours
Administration has been carrying out a program to
modernize and expand railways, harbours and road
transport in Kenya, Uganda and Tanganyika, with the
aid of WORLD BANK funds.

Photo: EARHA

November 1957



Publication	Date	Page	Publication	Date	Page
	of Issue	Number	Publication	of Issue	Number

PHOTO DISTRIBUTION

INTERNATIONAL BANK FOR RECONSTRUCTION AND DEVELOPMENT

FORM NO. 156A
(11-56)

110-EA-33



Inches 1 2 3 4 5 6 7 8

Centimetres 1 2 3 4 5 6 7 8 9 10 11 12 13 14 15 16 17 18 19

KODAK Color Control Patches © The Tiffen Company, 2000

Kodak
LICENSED PRODUCT


Blue Cyan Green Yellow Red Magenta White 3/Color Black



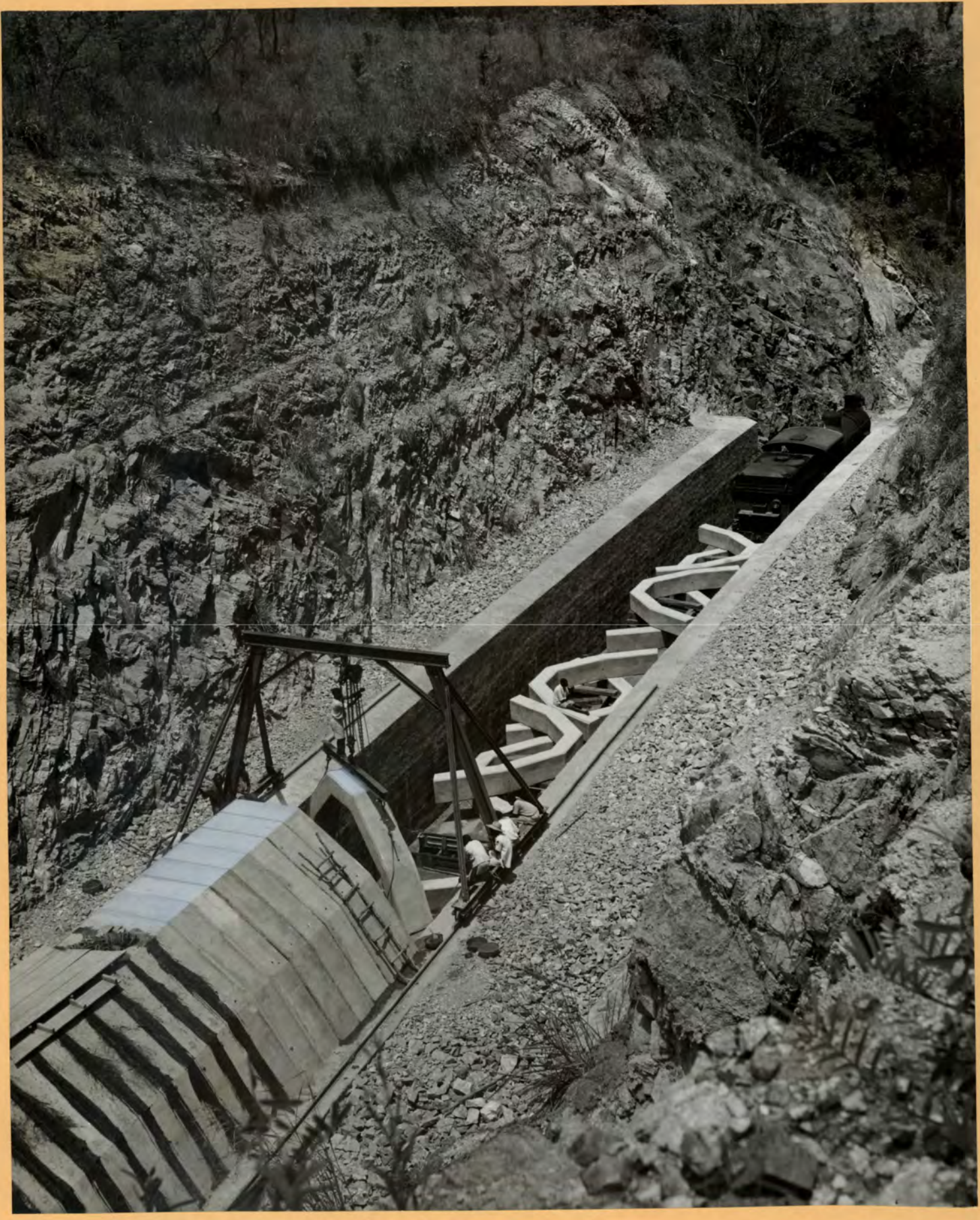
Paper 405

INTERNATIONAL BANK FOR RECONSTRUCTION AND DEVELOPMENT
PHOTO DISTRIBUTION

153

Publication	Date of Issue	Page Number	Publication	Date of Issue	Page Number
<p><i>Done at work</i></p> <p>INTERNATIONAL BANK FOR RECONSTRUCTION AND DEVELOPMENT Washington, D.C. 20433</p> <p>110-EA-33 Princess Margaret Quay and stacking yards at the Dar es Salaam Port in Tanganyika. The East African Railways and Harbours Administration has been carrying out a program to modernize and expand railways, harbours and road transport in Kenya, Uganda and Tanganyika, with the aid of WORLD BANK funds.</p> <p>Photo: EARHA November 1957</p>	<p><i>1959</i></p>	<p><i>5</i></p>	<p style="text-align: center;">  </p>		<p style="text-align: center;"><i>8028</i></p>

110-EA-34




Inches 1 2 3 4 5 6 7 8

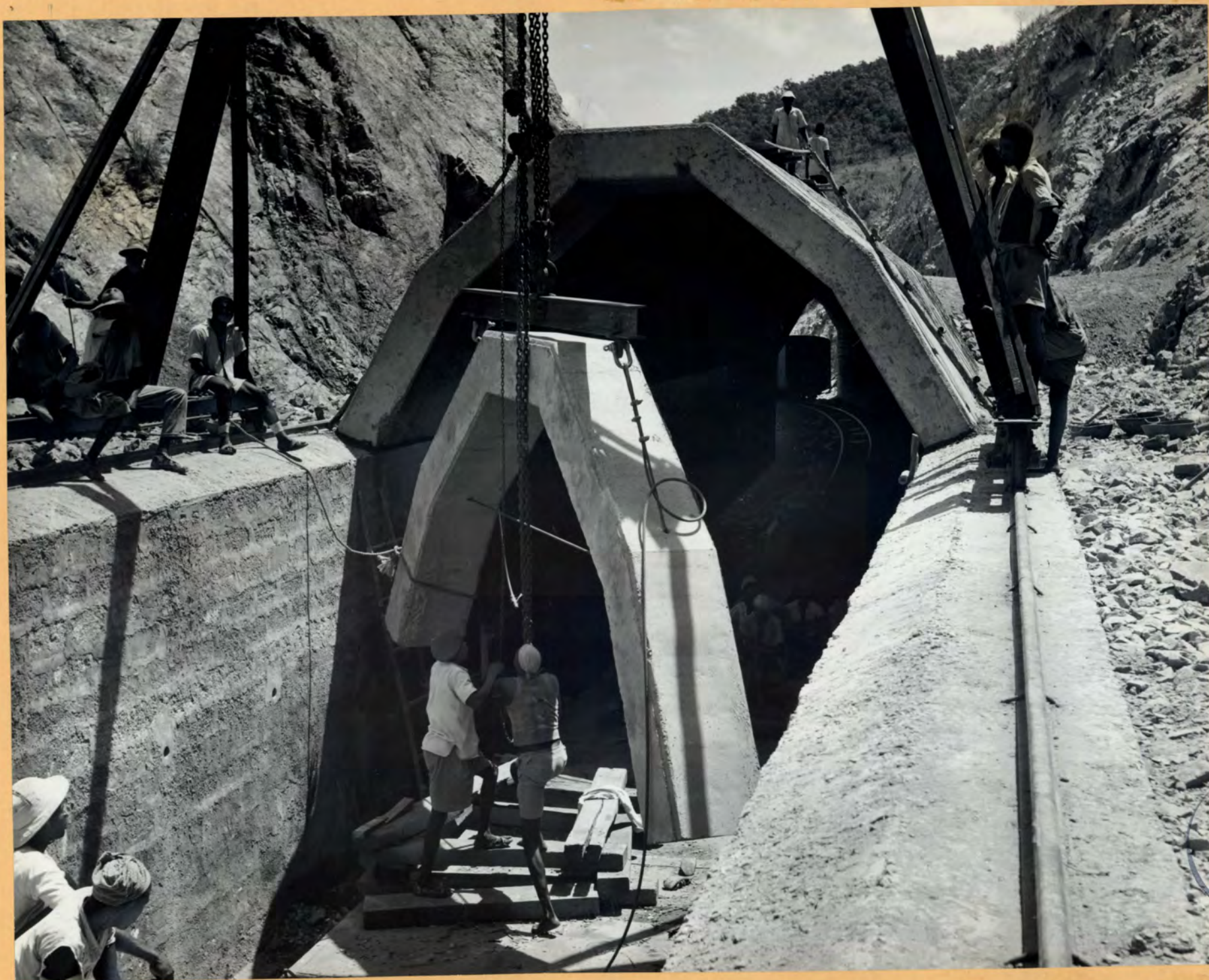
Centimetres 1 2 3 4 5 6 7 8 9 10 11 12 13 14 15 16 17 18 19

KODAK Color Control Patches © The Tiffen Company, 2000

Blue Cyan Green Yellow Red Magenta White 3/Color Black

Publication	Date of Issue	Page Number	Publication	Date of Issue
<p><u>INTERNATIONAL BANK FOR RECONSTRUCTION AND DEVELOPMENT</u> <u>Washington, D.C. 20433</u></p> <p>110-EA-34: Delays minimized on Western Uganda Railway Line by Ingenious Engineering Project - The Arch ring being lifted into position on the abutment top by means of a gantry travelling along the top of the completed abutment.</p> <p>The East African Railways and Harbours Administration has been carrying out a program to modernize and expand railways, harbours and road transport in Kenya, Uganda and Tanganyika, with the aid of WORLD BANK funds.</p>	<p>Photo: EARHA</p> <p>February 1958</p>			

110-EA-36



IBRD / IDA
AV/91
WBG
ARCHIVES

Inches 1 2 3 4 5 6 7 8

Centimetres 1 2 3 4 5 6 7 8 9 10 11 12 13 14 15 16 17 18 19

KODAK Color Control Patches © The Tiffen Company, 2000

Kodak
LICENSED PRODUCT

Blue Cyan Green Yellow Red Magenta White 3/Color Black



Pages 4+5

INTERNATIONAL BANK FOR RECONSTRUCTION AND DEVELOPMENT
PHOTO DISTRIBUTION

29

Publication	Date of Issue	Page Number	Publication	Date of Issue	Page Number
<p><i>Stone at Work</i></p> <p>INTERNATIONAL BANK FOR RECONSTRUCTION AND DEVELOPMENT Washington, D.C. 20433</p> <p>110-EA-35 The East African Railways employ a novel technique, involving the use of prefabricated concrete arches, to shield new railway cuttings from rockfalls in Western Uganda.</p> <p>The East African Railways and Harbours Administration has been carrying out a program to modernise and expand railways, harbours and road transport in Kenya, Uganda and Tanganyika, with the aid of WORLD BANK funds.</p>	<p>Photo: EARHA</p> <p>February 1958</p>	<p>5</p>			