



DECEMBER 2017

LISTENING TO TAJIKISTAN SURVEY

SAMPLE

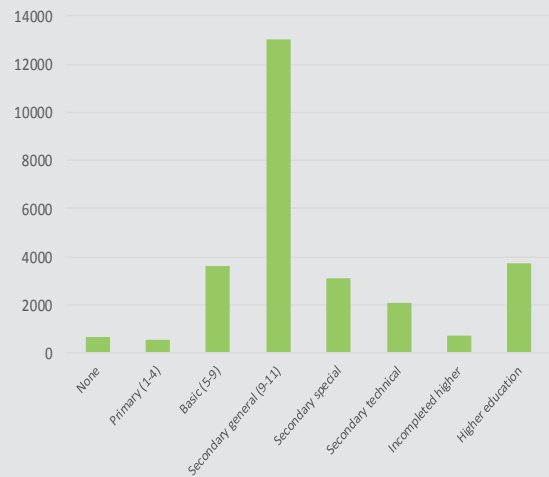
Cumulative number of interviews	27950	L2TJK
Number of households in Survey	800	L2TJK
Number of Interviews on Time	27511	Meta
Number of Interviews not on Time	439	Meta
Ratio of unique respondents in Urban Areas	28%	L2TJK
Ratio of unique respondents in Rural Areas	72%	L2TJK
Households participated in baseline face-to-face round	3000	L2TJK

Source: Listening to Tajikistan from 12-May-15 to 04-Dec-17

Respondents

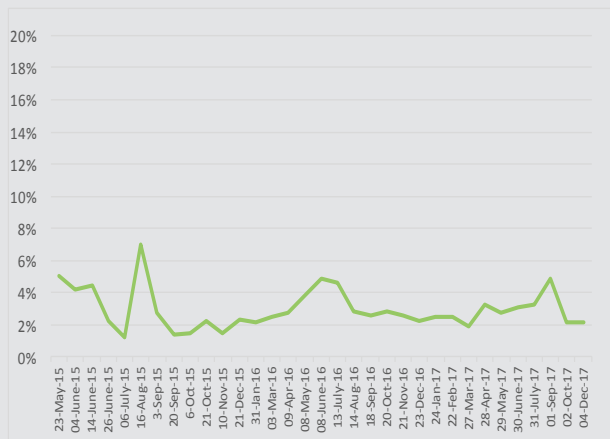
Education Level of Respondents

Source: Listening to Tajikistan



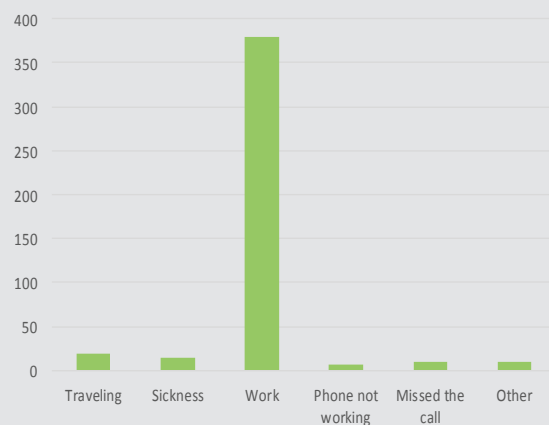
Share of Households Replaced by Round

Source: Listening to Tajikistan



Reason for Late Responses

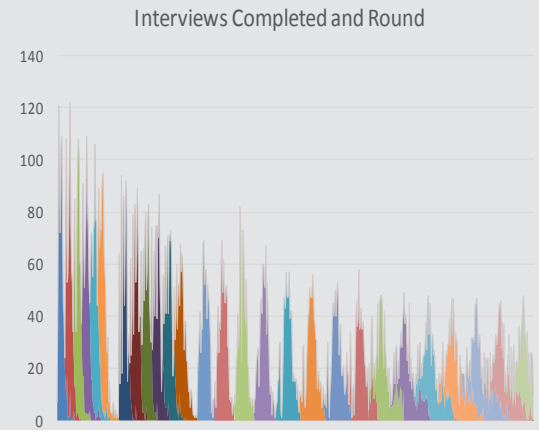
Source: Listening to Tajikistan



Participation

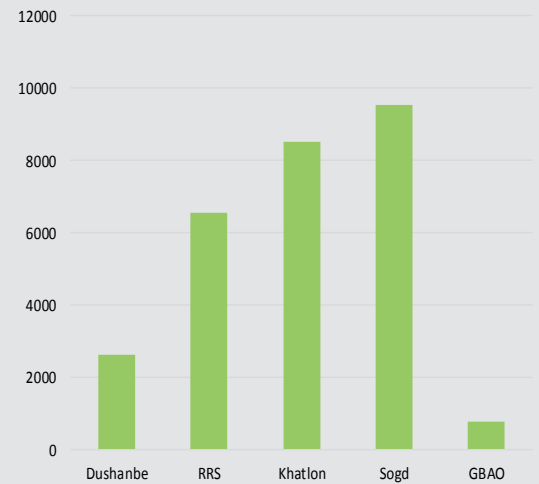
Interviews Completed by Date and Round

Source: Listening to Tajikistan



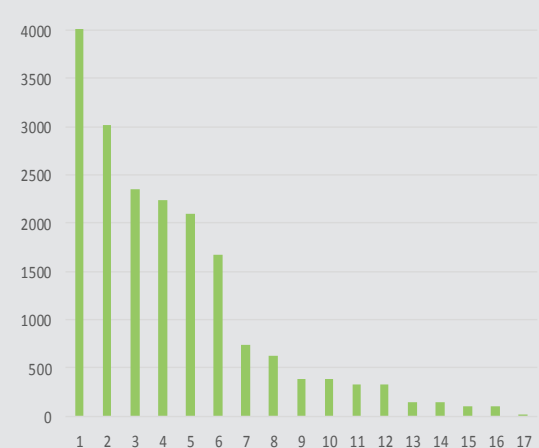
Number of Interviews by Region

Source: Listening to Tajikistan



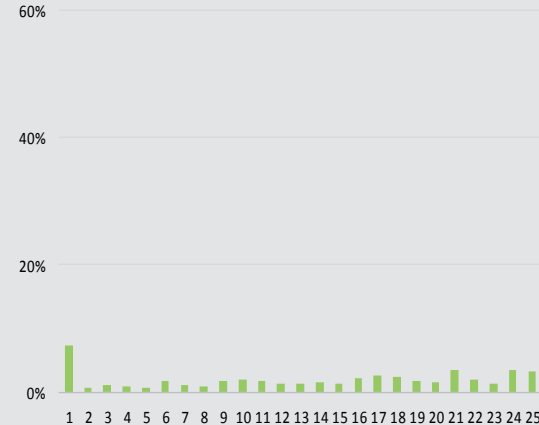
Number of Interviews Performed by Specific Enumerator

Source: Listening to Tajikistan



Number of Rounds Completed by Share of Total Interviews

Source: Listening to Tajikistan



KEY INDICATORS

Variable	Baseline	Non-selected	Wave 1	Wave 2	Wave 3	Wave 4	Wave 5	Wave 6
Number of dependent members	3,04	3,10	2,87	2,84	2,86	2,85	2,85	2,86
Dependency ratio	76%	77%	75%	75%	75%	75%	75%	75%
Share of HHs with migrants	55%	55%	54%	55%	54%	53%	53%	53%
Welfare indicator	4494,11	4483,60	4436,89	4437,35	4426,58	4414,76	4417,85	4426,62
Number of inadequacy (MPI dimension)	3,99	3,97	3,98	3,96	3,95	3,95	3,95	3,95
Weighted MPI	26%	26%	26%	26%	26%	26%	26%	26%
Multidimensional vulnerable	52%	51%	53%	53%	52%	52%	52%	52%
Multidimensional severe	0%	0%	0%	0%	0%	0%	0%	0%
Head/Spouse Unemployed	13%	13%	14%	14%	14%	13%	13%	14%
No HH Member Working	7%	6%	7%	7%	7%	7%	7%	7%
Poor Heating Access	78%	78%	78%	76%	76%	76%	76%	76%
Living Space Per Capita (m2)	9,97	9,76	10,28	10,19	10,22	10,11	10,30	10,33
Small Amount of Living Space	11%	11%	11%	11%	11%	11%	11%	11%
Lack Indoor Toilet	32%	32%	32%	31%	31%	31%	31%	31%
Lack Indoor Access to Water	54%	54%	54%	54%	54%	54%	54%	54%
Dirt Floor	40%	40%	40%	40%	40%	40%	40%	40%
Poor Quality Roof	4%	4%	4%	4%	4%	4%	3%	3%
Own Computer	12%	13%	12%	12%	12%	12%	12%	12%
Own Sat. Dish	34%	33%	34%	34%	33%	33%	33%	33%
Own Generator	3%	3%	4%	4%	4%	3%	3%	3%
Own Refrigerator	54%	54%	54%	54%	54%	54%	54%	54%
Own Air Conditioning Unit	11%	12%	11%	11%	11%	11%	11%	11%
Own a TV	97%	97%	98%	98%	98%	98%	98%	98%
Own Electric Iron	84%	83%	86%	86%	86%	86%	86%	86%
Own Gas Stove	38%	38%	39%	39%	39%	40%	39%	39%
Own Electric Radiator	25%	26%	26%	26%	27%	25%	25%	25%
Own Sewing Machine	51%	50%	53%	52%	53%	52%	52%	52%
Own Water Heater	23%	23%	23%	24%	23%	22%	22%	23%

One aspect of the Listening2Tajikistan Survey that has received particular attention is attrition and replacement. Because the estimates are meant to represent the national population, any systematic attrition that relates to household characteristics such as employment, income, or wellbeing may lead to incorrect conclusions. The survey is therefore weighted for the sampling design, but also reweighting is applied after each round based on the characteristics of the households that drop out. In practice, this is accomplished by predicting the likelihood of a given household dropping out based on the observed characteristics of the household, and then reweighting the households that did participate so that they will more closely resemble the initial sample. To check that this process is successful, we test the difference in means across each round. If attrition and replacement was not well accounted for by the reweighting, one would expect statistically significant differences from one round to the next, and in comparison to the population from the face-to-face 3000 household sample frame. The tables on this page show that in general, we do not find evidence of systematic changes in the composition of households participating over time, the intention of the re-weighting exercise.

	Baseline vs. Non-selected	Baseline vs. Wave 1	Baseline vs. Wave 2	Baseline vs. Wave 3	Baseline vs. Wave 4	Baseline vs. Wave 5	Baseline vs. Wave 6	Wave 1 vs. Wave 2	Wave 2 vs. Wave 3	Wave 3 vs. Wave 4	Wave 4 vs. Wave 5	Wave 5 vs. Wave 6
Number of dependent members	0.015*	0.017*	0.006*	0.010	0.007	0.006	0.013	0,274	0,595	0,613	0,974	0,392
Dependency ratio	0,072	0,495	0,550	0,614	0,684	0,607	0,665	0,733	0,785	0,717	0,705	0,576
HHs with migrants	0,692	0,851	0,924	0,689	0,638	0,587	0,582	0,614	0,285	0,788	0,719	0,947
Welfare indicator	0,776	0,525	0,560	0,500	0,406	0,424	0,489	0,989	0,564	0,689	0,843	0,531
Number of inadequacy (MPI dimension)	0,374	0,943	0,509	0,314	0,328	0,376	0,407	0,105	0,300	0,971	0,745	0,817
Weighted number of MPI	0,819	0,735	0,587	0,476	0,374	0,377	0,498	0,576	0,532	0,545	0,942	0,319
Multidimensional poor	0,777	0,945	0,902	0,847	0,831	0,979	0,814	0,866	0,781	0,253	0,508	0,237
Multidimensional vulnerable	0,429	0,470	0,542	0,956	0,629	0,776	0,981	0,705	0,093	0,155	0,346	0,096
Multidimensional severe	0,633	0,531	0,505	0,491	0,485	0,620	0,686	0,202	0,242	0,430	0,156	0,173
Head/Spouse Unemployed	0,244	0,702	0,612	0,665	0,807	0,921	0,842	0,653	0,591	0,042*	0,508	0,123
No HH Member Working	0,556	0,874	0,626	0,548	0,864	0,956	0,743	0,264	0,519	0,369	0,612	0,402
Poor Heating Access	0,656	0,519	0,051	0,037*	0,072	0,101	0,111	0,000*	0,723	0,354	0,434	0,966
Living Space Per Capita (m2)	0,549	0,692	0,767	0,736	0,846	0,694	0,688	0,489	0,699	0,221	0,144	0,685
Small Amount of Living Space	0,441	0,542	0,788	0,799	0,836	0,885	0,911	0,182	0,048*	0,836	0,409	0,466
Lack Indoor Toilet	0,915	0,584	0,370	0,219	0,173	0,192	0,179	0,202	0,364	0,601	0,896	0,638
Lack Indoor Access to Water	0,703	0,749	0,479	0,605	0,679	0,830	0,797	0,250	0,507	0,827	0,355	0,795
Dirt Floor	0,935	0,935	0,925	0,648	0,767	0,918	0,865	0,967	0,314	0,555	0,397	0,702
Poor Quality Roof	0,488	0,195	0,288	0,565	0,167	0,141	0,137	0,174	0,184	0,237	0,605	0,449
Own Computer	0,389	0,346	0,380	0,499	0,402	0,519	0,763	0,955	0,426	0,689	0,115	0,046*
Own Sat. Dish	0,431	0,836	0,951	0,800	0,616	0,667	0,605	0,673	0,425	0,432	0,744	0,398
Own Generator	0,062	0,065	0,122	0,324	0,514	0,418	0,383	0,365	0,178	0,394	0,300	0,923
Own Refrigerator	0,591	0,758	0,787	0,870	0,871	0,816	0,777	0,917	0,753	0,984	0,732	0,807
Own Air Conditioning Unit	0,582	0,903	0,713	0,749	0,569	0,735	0,790	0,595	0,899	0,438	0,153	0,214
Own TV	0,060	0,062	0,110	0,043*	0,029	0,032	0,138	0,736	0,372	0,523	0,843	0,186
Own Electric Iron	0,057	0,085	0,147	0,057	0,055	0,068	0,104	0,560	0,104	0,994	0,783	0,325
Own Gas Stove	0,606	0,597	0,604	0,457	0,311	0,403	0,394	0,963	0,316	0,329	0,352	0,841
Own Electric Radiator	0,608	0,763	0,497	0,326	0,949	0,998	0,928	0,236	0,323	0,019*	0,633	0,637
Own Sewing Machine	0,056	0,213	0,313	0,180	0,451	0,447	0,441	0,513	0,164	0,029	0,976	0,844
Own Water Heater	0,833	0,612	0,543	0,898	0,654	0,674	0,819	0,724	0,314	0,098	0,791	0,418

Source: Listening to Tajikistan

Data Description Listening2Tajikistan is a phone-based high-frequency panel survey of households designed to track the impact of the economic downturn in Russia on livelihoods in Tajikistan. The survey instrument includes questions on a variety of themes, including income, employment, migration, wellbeing, and services. The sample of 800 was drawn from a nationally representative face-to-face survey of 3000 households conducted in the spring of 2015, and fieldwork commenced in May 2015. Households were initially interviewed in 10-day intervals, moving to two-week intervals following the sixth wave of data collection. Responses reported in this note are weighted for representativeness and for non-response, and households that refused to participate (or otherwise drop out) were replaced with another household from the same primary sampling unit.

Reference: HH—Households L2TJK—Listening2Tajikistan F2F—Face-to-Face T60—Top 60% B40—Bottom 40% Meta—Meta Data

ADDITIONAL INFO

The support of UK-DFID in the design phase of this instrument is gratefully acknowledged.

Project Webpage: <http://www.worldbank.org/en/country/tajikistan/brief/listening2tajikistan>

QUESTIONS?

Contact Joao Pedro Wagner De Azavedo (jazavedo@worldbank.org), William Hutchins Seitz (wseitz@worldbank.org), Alisher Rajabov (arajabov@worldbank.org)



WORLD BANK GROUP
Poverty & Equity