

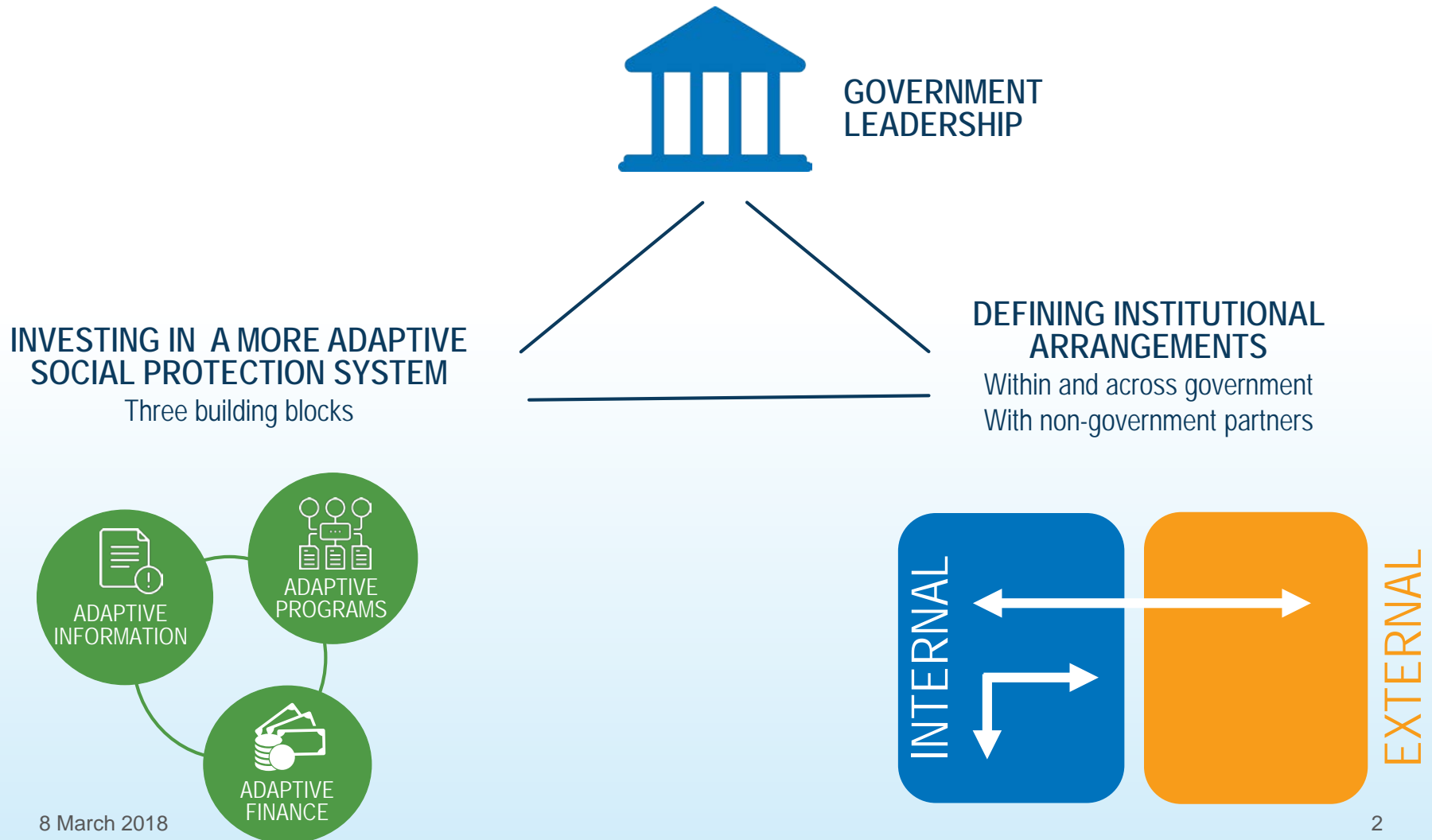


Framing presentation

Linking Humanitarian Assistance and Social
Protection Systems

Sarah Coll-Black
Senior Social Protection Specialist, World Bank Group

Locating our session in the SSLF framing on Day 1...



Humanitarian assistance and social protection systems are complementary...

Responding to a range of needs

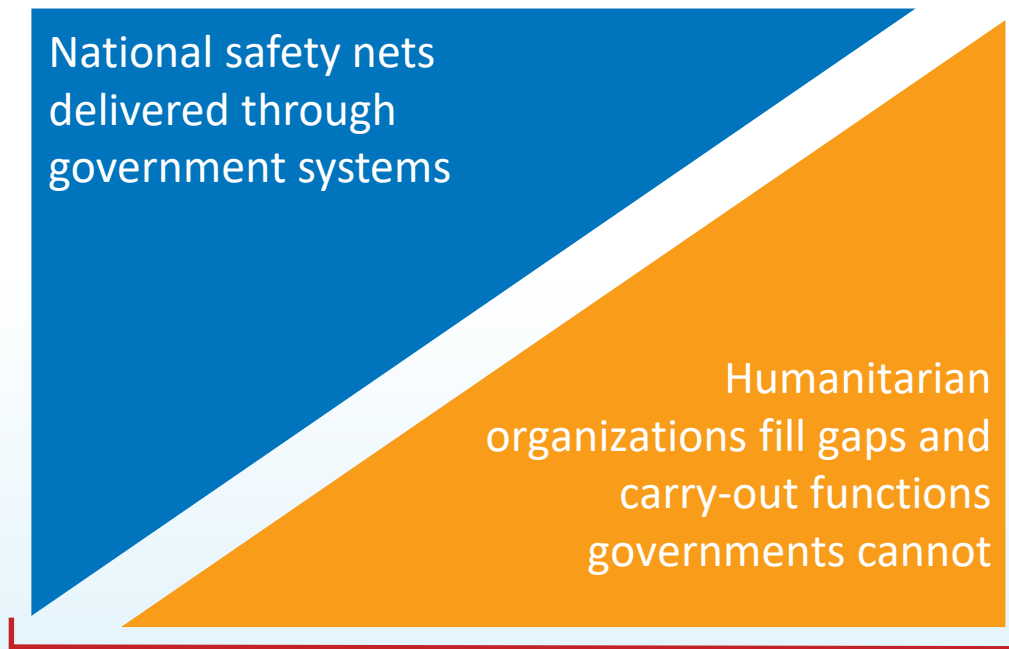
National safety net systems respond to “predictable” needs

Humanitarian assistance responds to emergency needs

Poverty and Vulnerability

...Ensuring benefits reach people in a range of contexts

Leadership and implementation



Legislation or international conventions (e.g. refugees)
States cease to exist

Financing anticipated costs



- Multiyear allocation for SP programming

Δ Post shock financing strategy in place

Δ Reserve fund

Δ Contingent credit

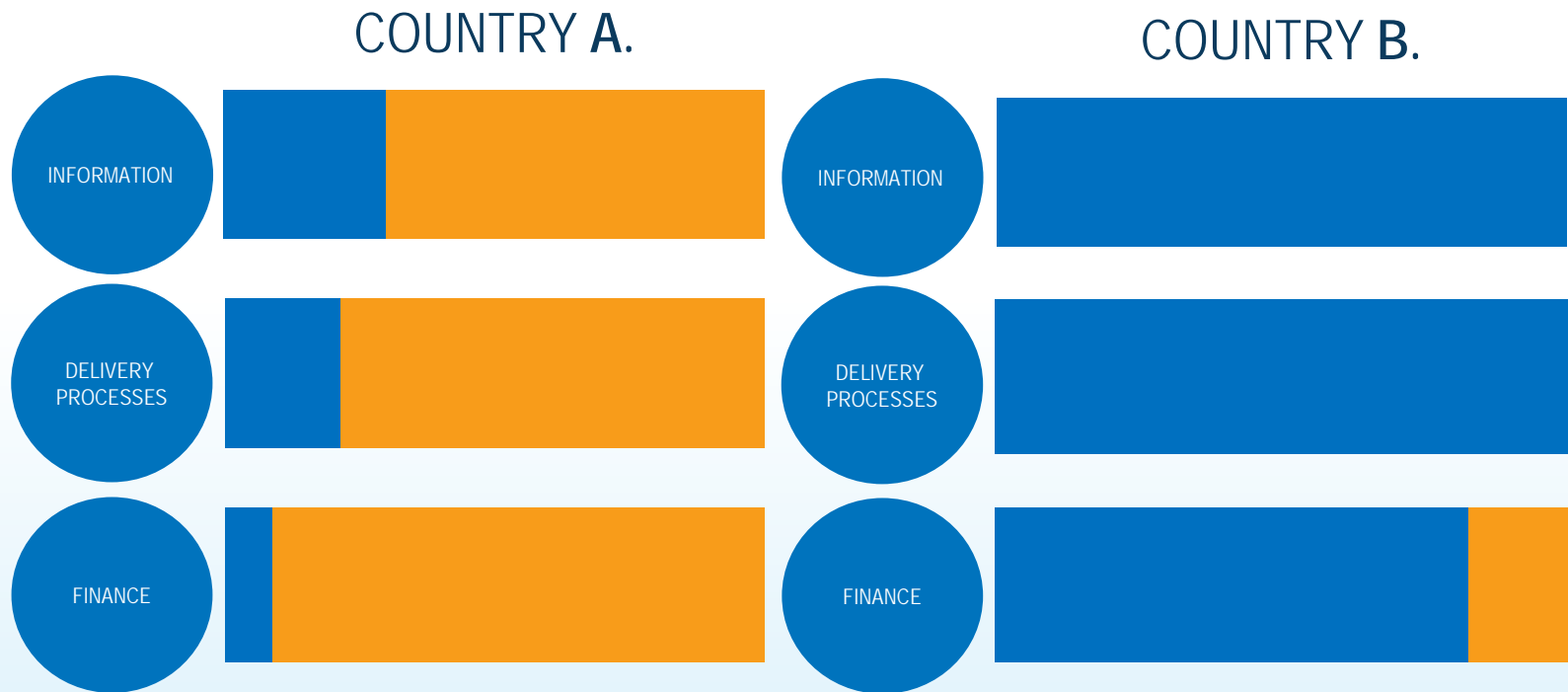
Δ Insurance

Δ Budget reallocation

Δ Donor finance

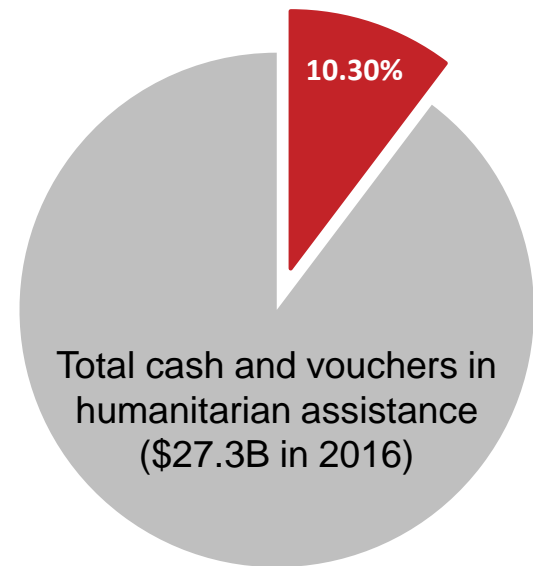
Δ Humanitarian resources

This complementarity underpins the Adaptive Social Protection Road Map



Changes in humanitarian assistance support a more integrated system

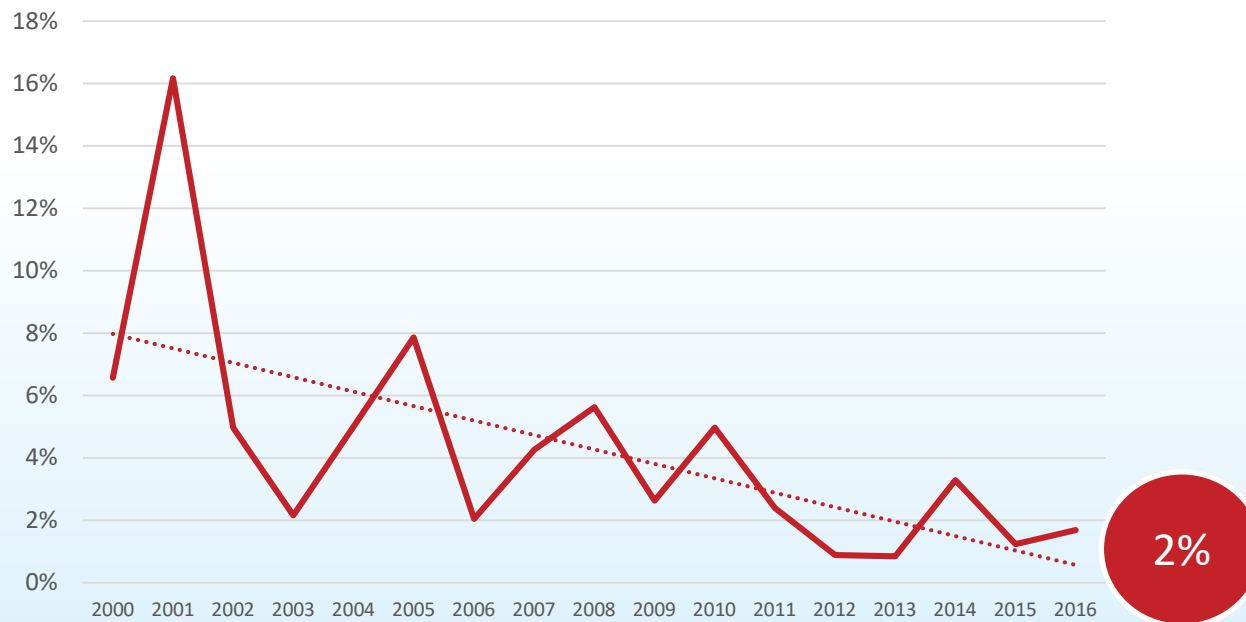
- World Humanitarian Summit's "Grand Bargain" calls for increased multi-annual funding to enhance predictability
- Humanitarian response is increasingly cash based: in 2016, the volume of humanitarian cash transfers and vouchers topped \$2.8B, a 40% increase since 2015
- A commitment to reinforce and strengthening local implementation capacity, where possible



Source: CaLP (2018)

In practice, nearly all humanitarian assistance is provided *outside* national structures

Share of humanitarian assistance delivered through national government structures



Source: Stoddard (2017) based of FTS data

Unbundling the SP-humanitarian dichotomy

- What is a 'national system'?
 - Source of funding
 - Channel of delivery
 - Implementation function
- What do we mean by 'humanitarian assistance'?
 - Responding to what 'need' – regular or emergency
 - International vs. domestic (sometimes located outside the SP remit, e.g., disaster authorities)
 - Source of funding
- This session discusses these elements to better connect humanitarian and SP

Our panel

- How are humanitarian and SP connecting in practice?
- What are the emerging issues and challenges?
- What lessons for others?



Lamis Al-Iryani



Berhanu Woldemichael



Waseem Sherazi