



LISTENING TO TAJIKISTAN MIGRATION

Migration

Share of Households with Migrants Q1 2015	16%	F2F
Share of Households with Migrants in Latest Round	16%	L2TJK
Share of Migrants that are Head of Household	14%	L2TJK

Remittances

Total Average value of remittances (TJS)	980	L2TJK
Bottom 40	930	L2TJK
Top 60	1 020	L2TJK
Overall Average Monthly Share of HHs Receiving Remittance(s)	12%	L2TJK

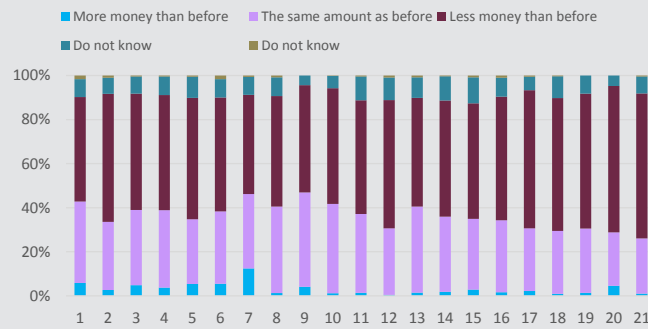
Source: Listening to Tajikistan from 12-May-15 to 26-Mar-17

Remittances

Remittance Frequency

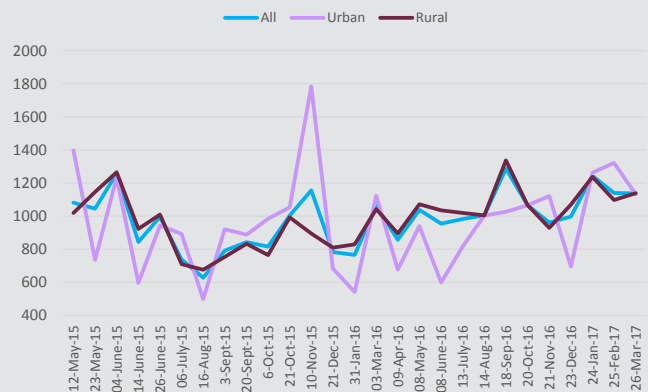
Source: Listening to Tajikistan

In comparison to one month ago, migrant sending...



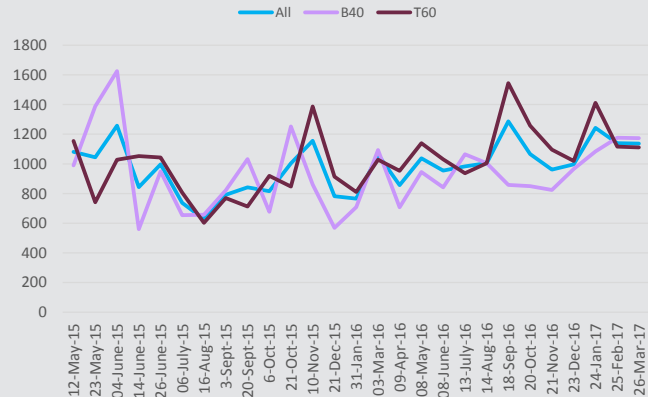
Household Average Real Value of Remittances

Source: Listening to Tajikistan



Household Average Real Value of Remittances

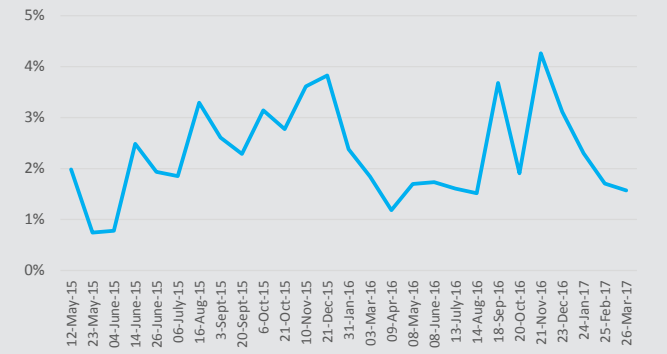
Source: Listening to Tajikistan



Migrants

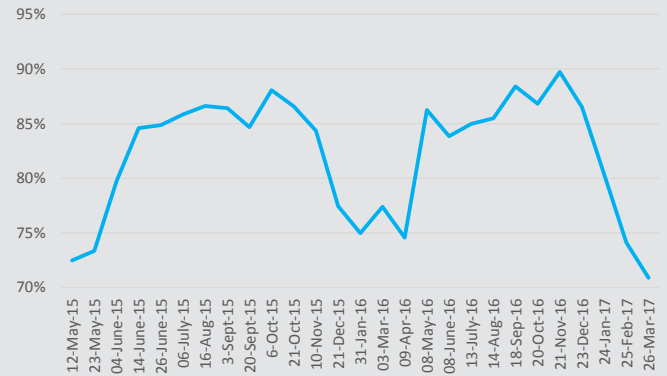
Share of Migrants Returning

Source: Listening to Tajikistan



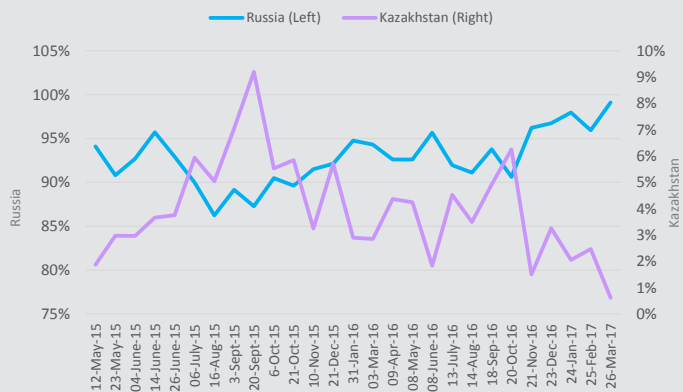
Share of Migrants Currently Working

Source: Listening to Tajikistan



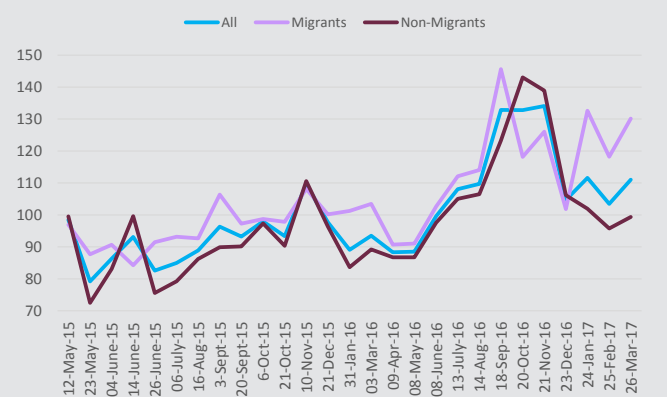
Preferred Migration Destination

Source: Listening to Tajikistan. Note: "Other" response not included.



Average Real PC Income: by HHS with and without Migrants

Source: Listening to Tajikistan



KEY INDICATORS

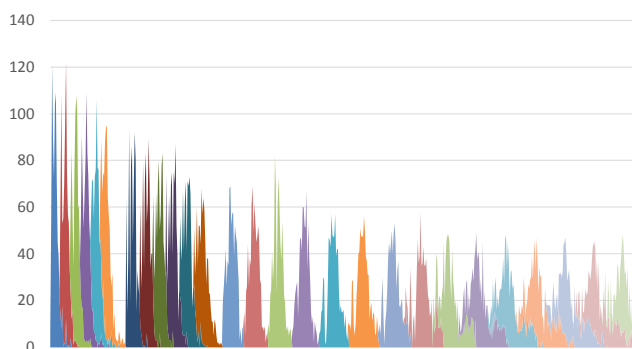
Variable	Subpop	12-May-15 - 04-June-15	14-June-15 - 06-July-15	16-Aug-15 - 20-Sept-15	6-Oct-15 - 10-Nov-15	21-Dec-15 - 31-Jan-16	3-Mar-16 - 9-Apr-16	8-May-16 - 8-June-16	13-July-16 - 14-Aug-16	18-Sep-16 - 20-Oct-16	21-Nov-16 - 23-Dec-16	24-Jan-17 - 26-Mar-17
Real remittance income (Somoni)	total	1127,9	859,1	753,6	991,7	774,3	959,4	995,9	994,0	1176,5	979,3	1173,4
Real remittance income (Somoni)	Urban	1121,5	810,9	769,2	1273,4	612,0	899,9	769,8	910,1	1045,9	908,5	1238,9
Real remittance income (Somoni)	Rural	1143,4	880,8	754,1	884,2	819,6	968,8	1053,9	1012,3	1201,6	999,5	1157,6
Real remittance income (Somoni)	b40	1334,9	720,9	836,5	930,6	638,9	900,1	893,5	1035,1	854,4	894,9	1144,9
Real remittance income (Somoni)	t60	974,3	966,8	694,6	1050,7	861,6	990,4	1085,1	970,4	1401,1	1058,0	1212,9
Received any remittances in past 10 days	total	10%	12%	15%	14%	9%	9%	13%	15%	14%	11%	10%
Received any remittances in past 10 days	urban	7%	8%	12%	12%	7%	6%	10%	8%	8%	6%	7%
Received any remittances in past 10 days	rural	11%	13%	16%	15%	10%	10%	14%	18%	17%	13%	12%
Received any remittances in past 10 days	b40	11%	13%	16%	15%	9%	10%	15%	14%	15%	13%	11%
Received any remittances in past 10 days	t60	9%	11%	14%	14%	9%	8%	11%	16%	14%	10%	10%
Total remittances received over entire survey	total	5431,5	5651,6	5776,4	5851,5	5993,1	5994,2	5970,2	6001,0	6152,2	6322,0	6346,3
Total remittances received over entire survey	urban	4895,7	4984,3	4730,0	4822,5	4855,1	4867,6	4797,2	4998,5	5310,6	5366,5	5378,6
Total remittances received over entire survey	rural	5600,0	5868,1	6123,5	6185,2	6359,2	6357,7	6365,5	6327,6	6422,5	6638,8	6675,2
Total remittances received over entire survey	b40	4965,9	5336,2	5282,6	5366,2	5457,1	5451,0	5256,9	5211,7	5409,9	5632,8	5668,5
Total remittances received over entire survey	t60	5777,2	5886,4	6166,1	6224,5	6409,0	6415,8	6524,7	6623,4	6752,4	6873,3	6880,7
Current Migrants												
Age		31,43	31,74	32,29	31,69	30,75	31,03	30,76	31,49	30,52	29,60	29,3
Married		63%	61%	61%	60%	53%	52%	55%	58%	55%	51%	50%
Head of Household		19%	20%	21%	20%	15%	17%	19%	21%	18%	13%	13%
Employed in Tajikistan at Baseline		72%	69%	65%	66%	67%	63%	60%	56%	52%	53%	55%
Out of Labor Force in Tajikistan at Baseline		18%	20%	22%	23%	20%	22%	23%	26%	29%	27%	23%

Source: Listening to Tajikistan

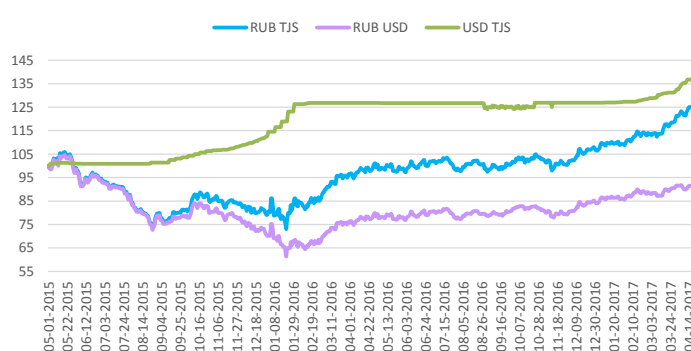
Data Description

The Poverty and Equity team of the World Bank launched the Listening-to-Tajikistan survey in 2015 to monitor the challenges faced by vulnerable households in the country. The survey instrument includes questions on a variety of themes, including income, employment, migration, wellbeing, and services. The sample includes 800 households which were drawn from a nationally representative face-to-face survey conducted in the spring of 2015. Participating households were initially interviewed in 10-day intervals, moving to two-week intervals following the sixth wave of data collection. Responses reported in this note are weighted for national representativeness and for non-response, and households that refused to participate (or otherwise drop out) were replaced with another household from the same primary sampling unit. The B40 and T60 classification for the L2T survey are defined with respect to the baseline round of the survey, and are not updated in each round.

Interviews Completed by Date and Round



Exchange Rates (1 May 2015= 100)



Reference: HH—Households
T60—Top 60%

L2TJK—Listening2Tajikistan
B40—Bottom 40%

F2F—Face-to-Face
Meta—Meta Data

ADDITIONAL INFO

The support of UK-DFID in the design phase of this instrument is gratefully acknowledged.
Project Webpage: <http://www.worldbank.org/en/country/tajikistan/brief/listening2tajikistan>

QUESTIONS?

Contact Joao Pedro Wagner De Azavedo (jazevedo@worldbank.org), William Hutchins Seitz (wseitz@worldbank.org), Alisher Rajabov (arajabov@worldbank.org)



WORLD BANK GROUP
Poverty & Equity