



# Refugee Crisis and Social Protection In Turkey

Social Protection and Forced Displacement

Mustafa Sencer KİREMITÇİ

Ministry of Family and Social Policies of Turkey

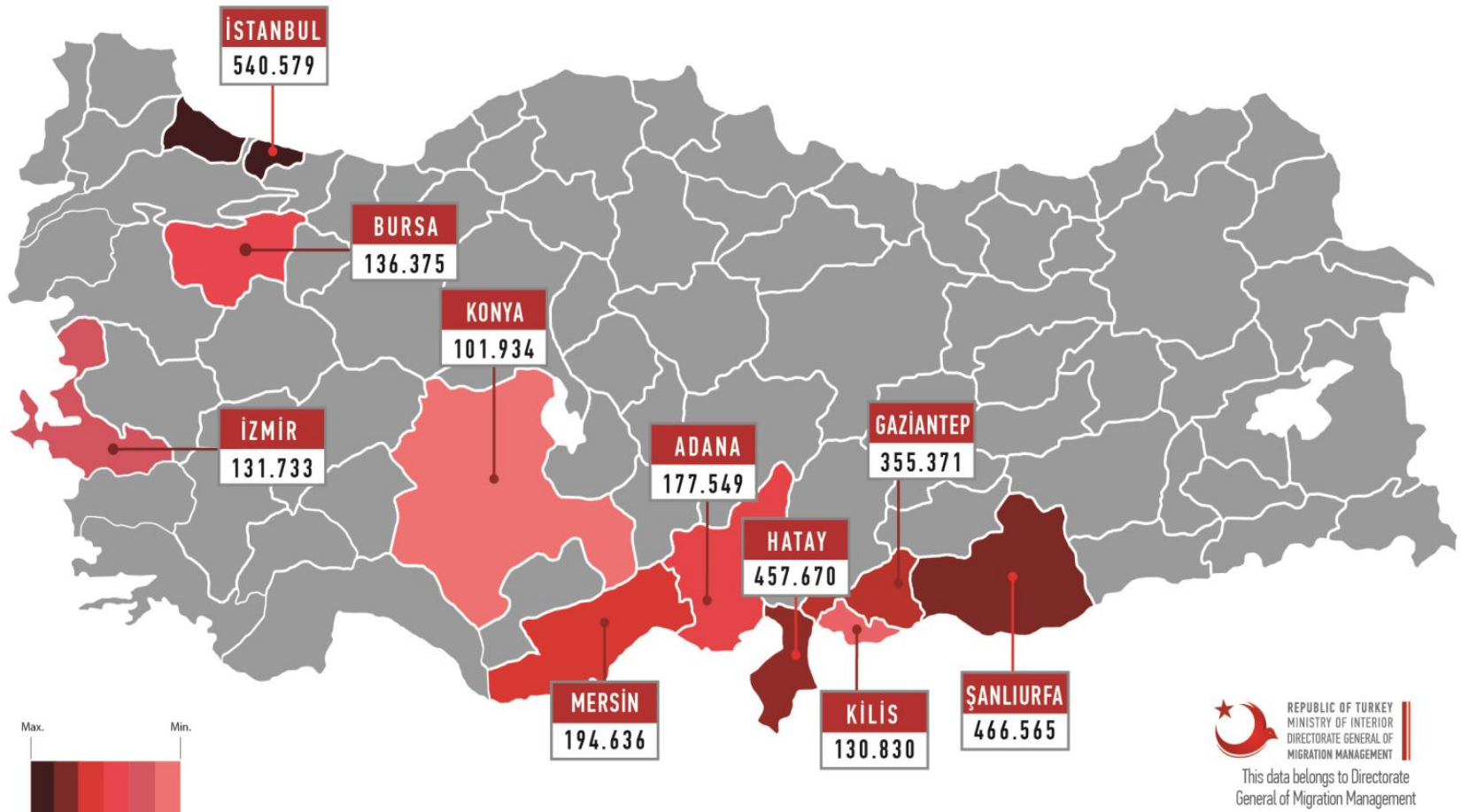
# Rationale & Context

**Issue:** Since 2011 refugee influx due to conflict in Syria

**As of 02/08/2018:**

- 3.505.532 Syrian people under temporary protection in Turkey.
- 4.33% of Turkey's total population.
- 228.222 reside in camps.
- 3.278.310 live in cities.
- 1.583.910 children.

# DISTRIBUTION OF SYRIAN REFUGEES IN THE SCOPE OF TEMPORARY PROTECTION BY TOP TEN PROVINCE



# Rationale & Context

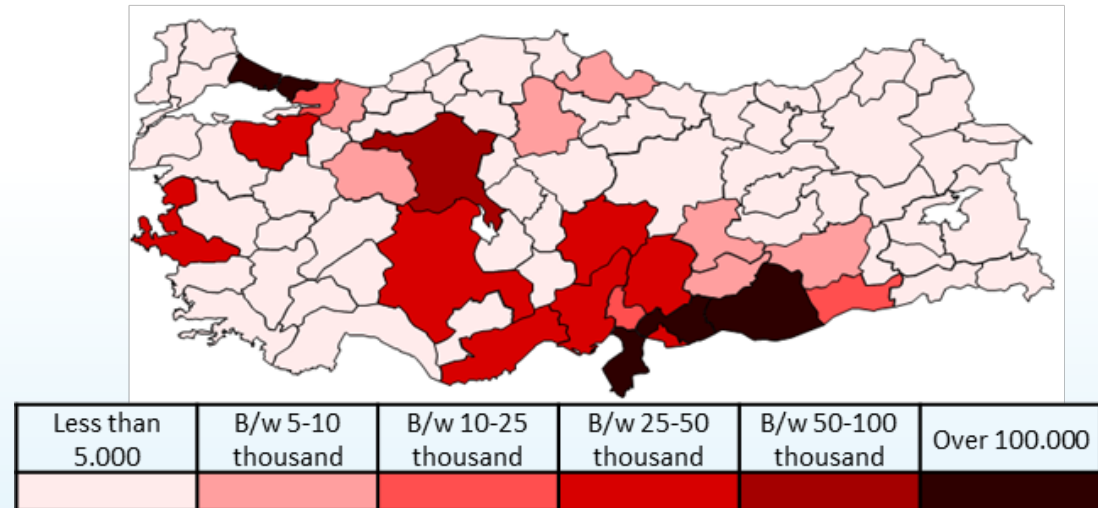
- Multiple government agencies, NGOs and civil society responding to crisis
- Ministry of Family and Social Policies developed **cash programs** with the financial support of European Union **for the basic needs** of refugees.
  - Collaboration with UNICEF, WFP and Turkish Red Crescent
  - **Scale-up** of existing social assistance system

# Design & Implementation

## ***Programs developed for Syrians:***

- ***Emergency Social Safety Net (ESSN):***
- Cash transfer (started in December 2017)
- Support of basic needs of refugees
- Demographic targeting
- Monthly \$30 payment per person
- Current Beneficiary Number: **1.186.358 (201.000 HH)**

**SCA (ESSN) Beneficiaries by Provinces**



# Design & Implementation

## Programs for Syrian Refugees

### **Conditional Cash Transfers for Refugees**

- Cash transfer (since December 2017).
- Modified CCT for refugee children
- Current Beneficiaries: **320.539** children
- Children in school age from kindergarten through 12th grade are entitled to a payment if they are not absent for **more than 4 days** a month.

### **Child categories & benefits**

Primary school boy	\$9/mo
Primary school girl	\$11/mo
High school boy	\$13/mo
High school girl	\$16/mo
Additional <b>\$26</b> per beneficiary within semi-annual periods (January - September).	

# Why we are implementing this programs

- Large refugee population in poor conditions
- EU and International Community support
- Cash transfers effective to support people's basic needs
- National Systems are built with the flexibility to adapt shocks
- In future cash transfers can be used as incentives for broader social protection measures

# Strength of Adaptive Response

**What has enabled a fast response:**

## **Strong and adaptive delivery Infrastructure**

- Strong and adaptive delivery infrastructure
- The programmes, which has been operating through Integrated Social Assistance Service Information System (**ISAS**) ensures automation, transparency, full control, accountability and simultaneous automatic registration
- No printed documents are requested from applicants and beneficiaries.
- Online data are obtained from relevant institutions.



# Strength of Adaptive Response

- **Geographical Coverage**
  - Applications can be done in all provinces and subprovinces of Turkey throughout local offices (1001) and TRC Service Centers (18>9)
- **Preparedness to shocks and capability to respond quickly**
- **Experience with responding to large Refugee influxes**

# Key Challenges and Solutions

- Additional burden on public services
- Language barrier
- Continuity of EU funds
- Registration Problems

# Some Key Statistics

	<b>ESSN</b>	<b>CCTE</b>
Number of Applicants	201.989	160.827
Number of Beneficiaries	1.186.358	320.559
Total Payment Amounts	1.209.423.80 TL	83.170.455,00 TL



**KINDLY SUBMITTED FOR YOUR INFORMATION  
THANK YOU**