

**THE WORLD BANK GROUP ARCHIVES**

**PUBLIC DISCLOSURE AUTHORIZED**

Folder Title: Photographs - Chile - Loan 83 - Volume 1  
Folder ID: 1717450  
Fonds: Records of Office of External Affairs (WB IBRD/IDA EXT)

Digitized: August 26, 2014

To cite materials from this archival folder, please follow the following format:  
[Descriptive name of item], [Folder Title], Folder ID [Folder ID], World Bank Group Archives, Washington, D.C., United States.

The records in this folder were created or received by The World Bank in the course of its business.

The records that were created by the staff of The World Bank are subject to the Bank's copyright.

Please refer to <http://www.worldbank.org/terms-of-use-earchives> for full copyright terms of use and disclaimers.



THE WORLD BANK  
Washington, D.C.

© 2012 International Bank for Reconstruction and Development / International Development Association or  
The World Bank  
1818 H Street NW  
Washington DC 20433  
Telephone: 202-473-1000  
Internet: [www.worldbank.org](http://www.worldbank.org)

**PUBLIC DISCLOSURE AUTHORIZED**

CHILE - LN - 83

VOL. 1

**DECLASSIFIED**  
WBG Archives

The World Bank Group  
**Archives**  
1717450  
R2002-110 Other #: 30 217360B  
Photographs - Chile - Loan 83 - Volume 1



INTERNATIONAL BANK FOR RECONSTRUCTION AND DEVELOPMENT  
Washington, D.C. 20433

83-CH-16 Chile now has a complete new industry supplying all the newsprint required for domestic use and also exporting some. The newsprint plant of the Papeles y Cartones S.A. was constructed near Concepcion with the aid of WORLD BANK funds. The newsprint machine has a capacity of 5,000 tons a month and raw material for the mill comes a million acres of Monterrey Pine planted in the Concepcion area of Chile. On arrival at the newsprint plant, the logs are stripped of their bark in large rotating drums.

Photo: Bob Borowicz, Santiago

November 1960

International Bank for Reconstruction and Development

(World Bank)

Photo No. ....

83-CH-16

40-83-CH-1

IBRD/IDA  
A1/85  
WBG  
ARCHIVES



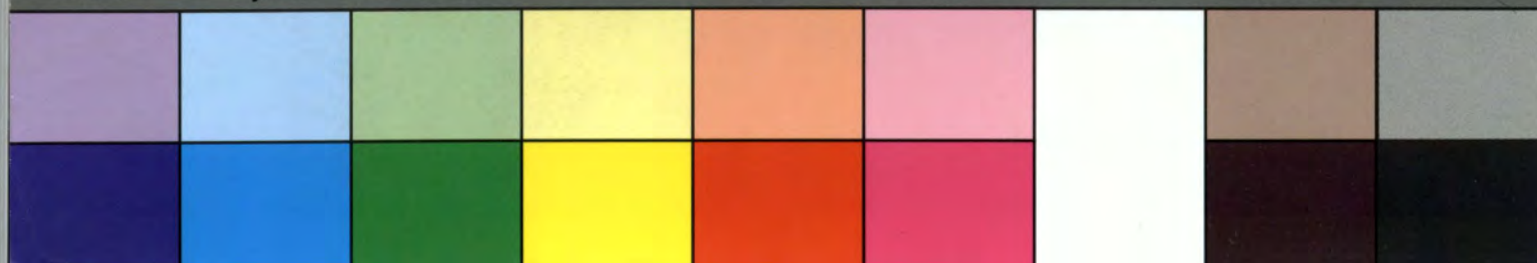
Inches 1 2 3 4 5 6 7 8

Centimetres 1 2 3 4 5 6 7 8 9 10 11 12 13 14 15 16 17 18 19

**KODAK Color Control Patches** © The Tiffen Company, 2000

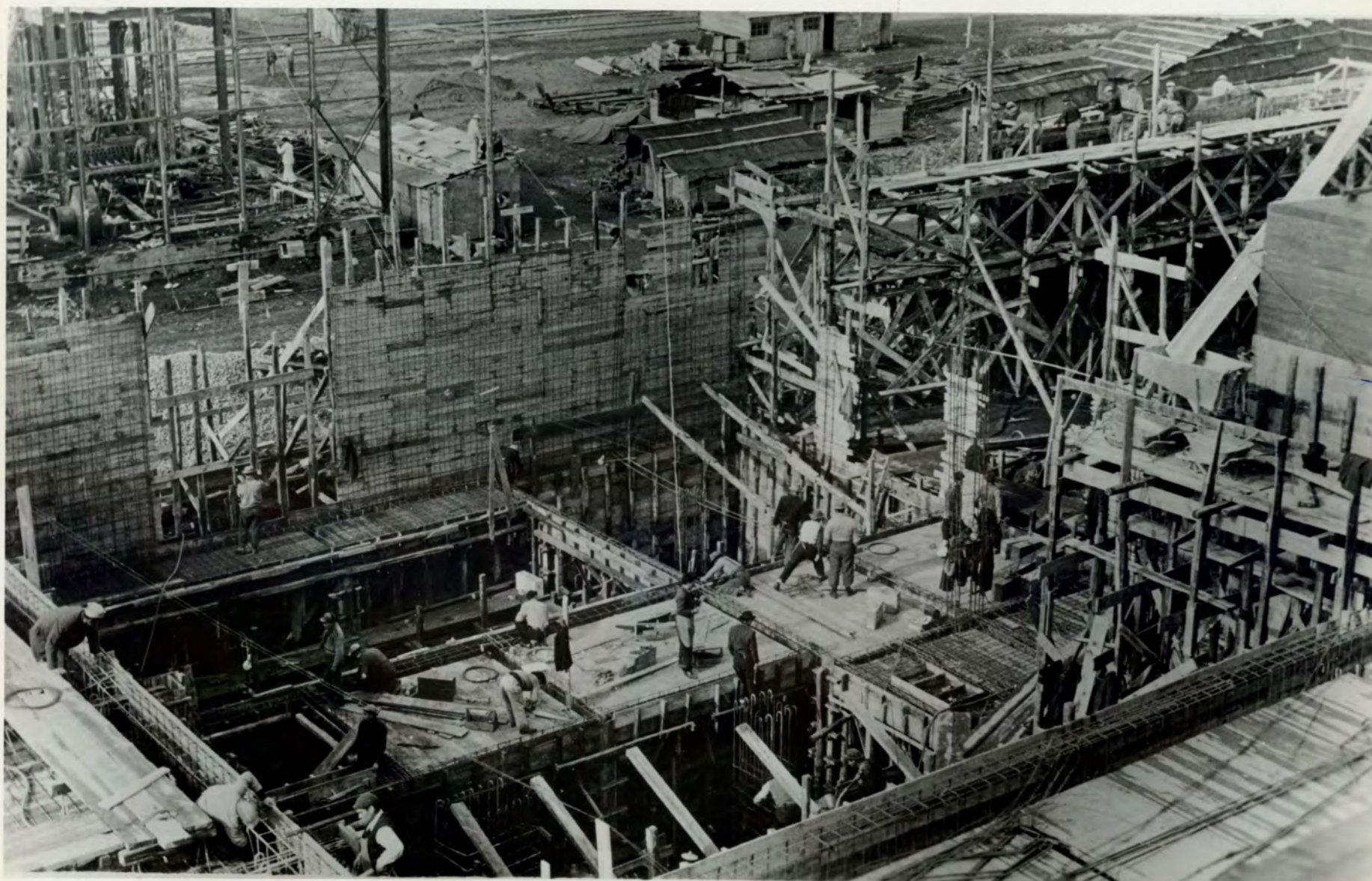
**Kodak**  
LICENSED PRODUCT

Blue Cyan Green Yellow Red Magenta White 3/Color Black



WITHDRAWN FROM CIRCULATION

83-CA-1



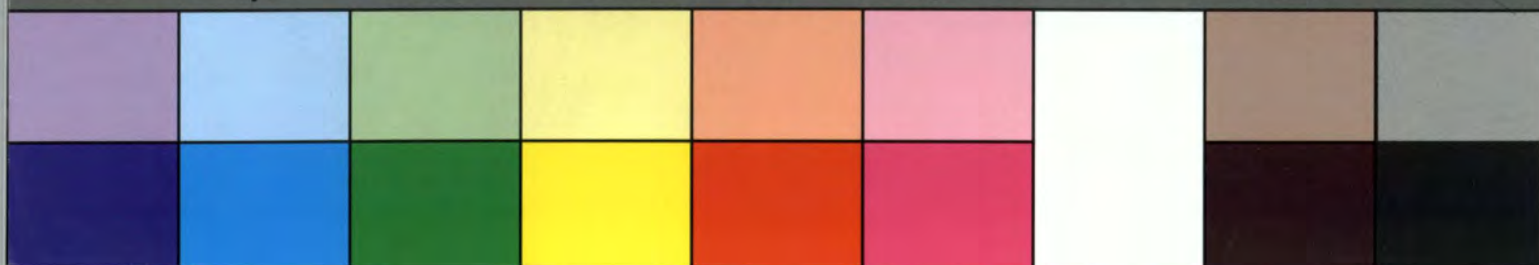
Inches 1 2 3 4 5 6 7 8

Centimetres 1 2 3 4 5 6 7 8 9 10 11 12 13 14 15 16 17 18 19

**KODAK Color Control Patches** © The Tiffen Company, 2000

**Kodak**  
LICENSED PRODUCT

Blue Cyan Green Yellow Red Magenta White 3/Color Black





WITHDRAWN FROM CIRCULATION

83-CH-2

IBRD / IDA  
A/185  
WBG  
ARCHIVES



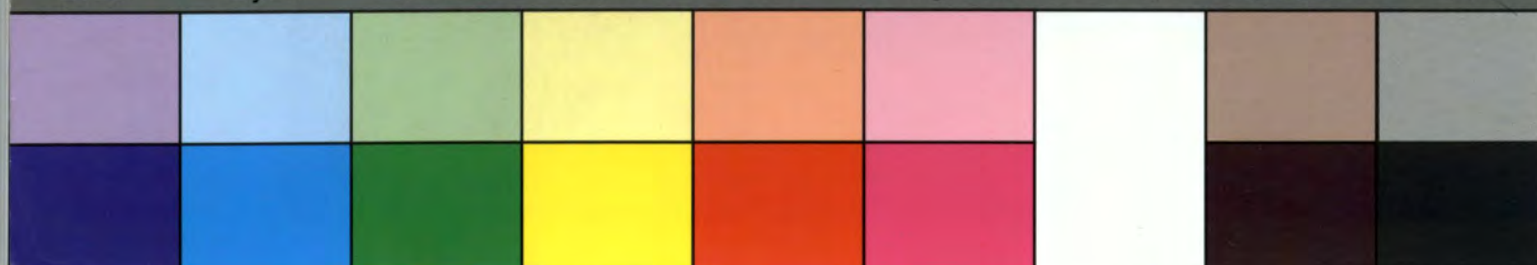
Inches 1 2 3 4 5 6 7 8

Centimetres 1 2 3 4 5 6 7 8 9 10 11 12 13 14 15 16 17 18 19

**KODAK Color Control Patches** © The Tiffen Company, 2000

**Kodak**  
LICENSED PRODUCT

Blue Cyan Green Yellow Red Magenta White 3/Color Black





| Publication  | Date of Issue | Page Number | Publication | Date of Issue | Page Number |
|--|---------------|-------------|-------------|---------------|-------------|
| <p><u>INTERNATIONAL BANK FOR RECONSTRUCTION AND DEVELOPMENT</u><br/><u>Washington, D.C. 20433</u></p> <p>83-CH-2 Construction of the roof over Machine III at the Bio Bio newsprint paper mill near Concepcion, Chile. The WORLD BANK provided financial assistance for the construction of this paper mill.</p> <p>Photo: Cia Manufacturera de Papeles y Cartones S.A.<br/>March 1956</p> |               |             |             |               |             |

83-CH-3

WITHDRAWN FROM CIRCULATION



Inches 1 2 3 4 5 6 7 8

Centimetres 1 2 3 4 5 6 7 8 9 10 11 12 13 14 15 16 17 18 19

**KODAK Color Control Patches** © The Tiffen Company, 2000

**Kodak**  
LICENSED PRODUCT

Blue Cyan Green Yellow Red Magenta White 3/Color Black





Laya



83-CH-4



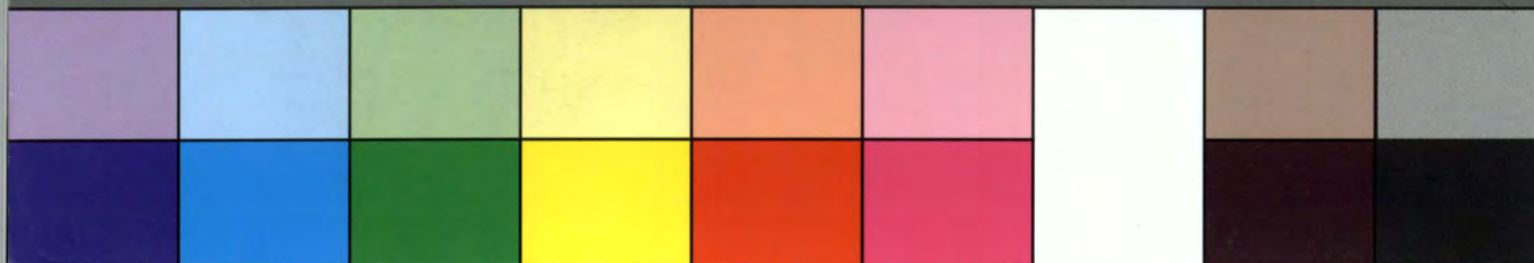
Inches 1 2 3 4 5 6 7 8

Centimetres 1 2 3 4 5 6 7 8 9 10 11 12 13 14 15 16 17 18 19

**KODAK Color Control Patches** © The Tiffen Company, 2000

**Kodak**  
LICENSED PRODUCT

Blue Cyan Green Yellow Red Magenta White 3/Color Black





83-CH-5



Inches 1 2 3 4 5 6 7 8

Centimetres 1 2 3 4 5 6 7 8 9 10 11 12 13 14 15 16 17 18 19

**KODAK Color Control Patches** © The Tiffen Company, 2000

**Kodak**  
LICENSED PRODUCT

Blue Cyan Green Yellow Red Magenta White 3/Color Black



INTERNATIONAL BANK FOR RECONSTRUCTION AND DEVELOPMENT  
PHOTO DISTRIBUTION

| Publication  | Date of Issue | Page Number | Publication | Date of Issue | Page Number |
|--|---------------|-------------|-------------|---------------|-------------|
| <p><u>INTERNATIONAL BANK FOR RECONSTRUCTION AND DEVELOPMENT</u><br/><u>Washington, D.C. 20433</u></p> <p>83-CH-5 This newsprint mill across the Bio Bio River from Concepcion, Chile, supplies Chilean and other South American markets with newsprint made from local timber resources. This plant was built with the aid of WORLD BANK funds and came into operation early in 1957.</p> <p>Photo: World Bank Staff <span style="float: right;">April 1957</span></p> |               |             |             |               |             |

F-54-CH-1

*Lapa*

83-CH-6



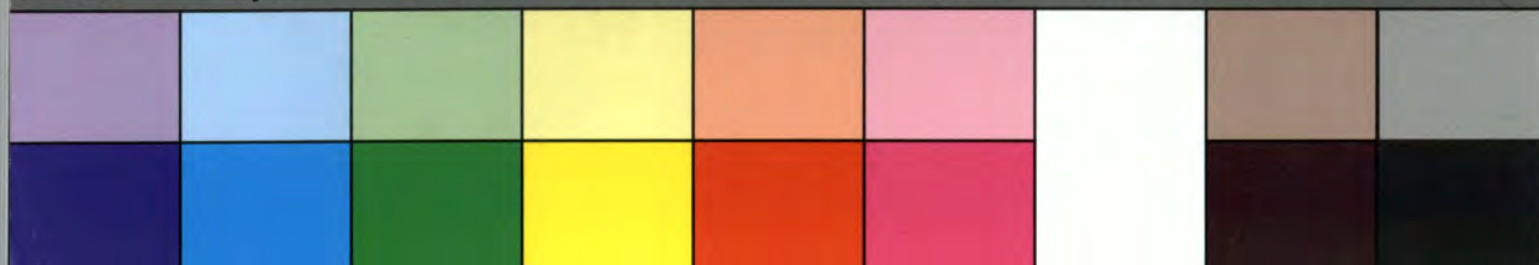
Inches 1 2 3 4 5 6 7 8

Centimetres 1 2 3 4 5 6 7 8 9 10 11 12 13 14 15 16 17 18 19

**KODAK Color Control Patches** © The Tiffen Company, 2000

**Kodak**  
LICENSED PRODUCT

Blue Cyan Green Yellow Red Magenta White 3/Color Black





INTERNATIONAL BANK FOR RECONSTRUCTION AND DEVELOPMENT  
PHOTO DISTRIBUTION

| Page Number | Date of Issue  | Publication   | Page Number | Date of Issue | Publication   |
|-------------|--|---|-------------|---------------|---|
|             | 83-CH-6 Stocks of pulp wood at the Laja plant of the Compania Manufacturera de Papeles y Cartones, S.A. of Chile. This plant, near Concepcion, was built with the aid of WORLD BANK funds. | INTERNATIONAL BANK FOR RECONSTRUCTION AND DEVELOPMENT<br>Washington, D.C. 20543 |             |               | <p><u>HOLD FOR RELEASE FOR A.M. PAPERS SATURDAY, NOVEMBER 21, 1962</u></p> <p><u>INTERNATIONAL FINANCE CORPORATION (IFC), Washington 25, D.C.</u></p> <p><i>F54-CH-1</i><br/>83-CH-6 Stocks of pulp wood at the Laja plant of the Compania Manufacturera de Papeles y Cartones, S.A., of Chile. This plant, near Concepcion, is being expanded with the assistance of an investment of \$3 million from the INTERNATIONAL FINANCE CORPORATION, a \$16 million loan from the Inter-American Development Bank and \$12.5 million from the firm's own capital.</p> <p>Photo: Bob Borowicz, Santiago, Chile</p> |
|             | Photo: Bob Borowicz, Santiago  | November 1960   |             |               |   |

IBRD / IDA  
AV / 85  
WBG  
ARCHIVES

83-CH-7



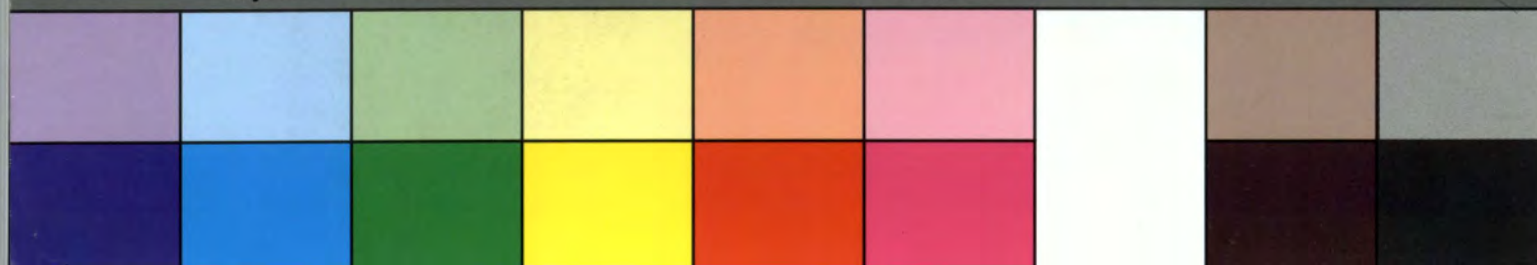
Inches 1 2 3 4 5 6 7 8

Centimetres 1 2 3 4 5 6 7 8 9 10 11 12 13 14 15 16 17 18 19

**KODAK Color Control Patches** © The Tiffen Company, 2000

**Kodak**  
LICENSED PRODUCT

Blue Cyan Green Yellow Red Magenta White 3/Color Black

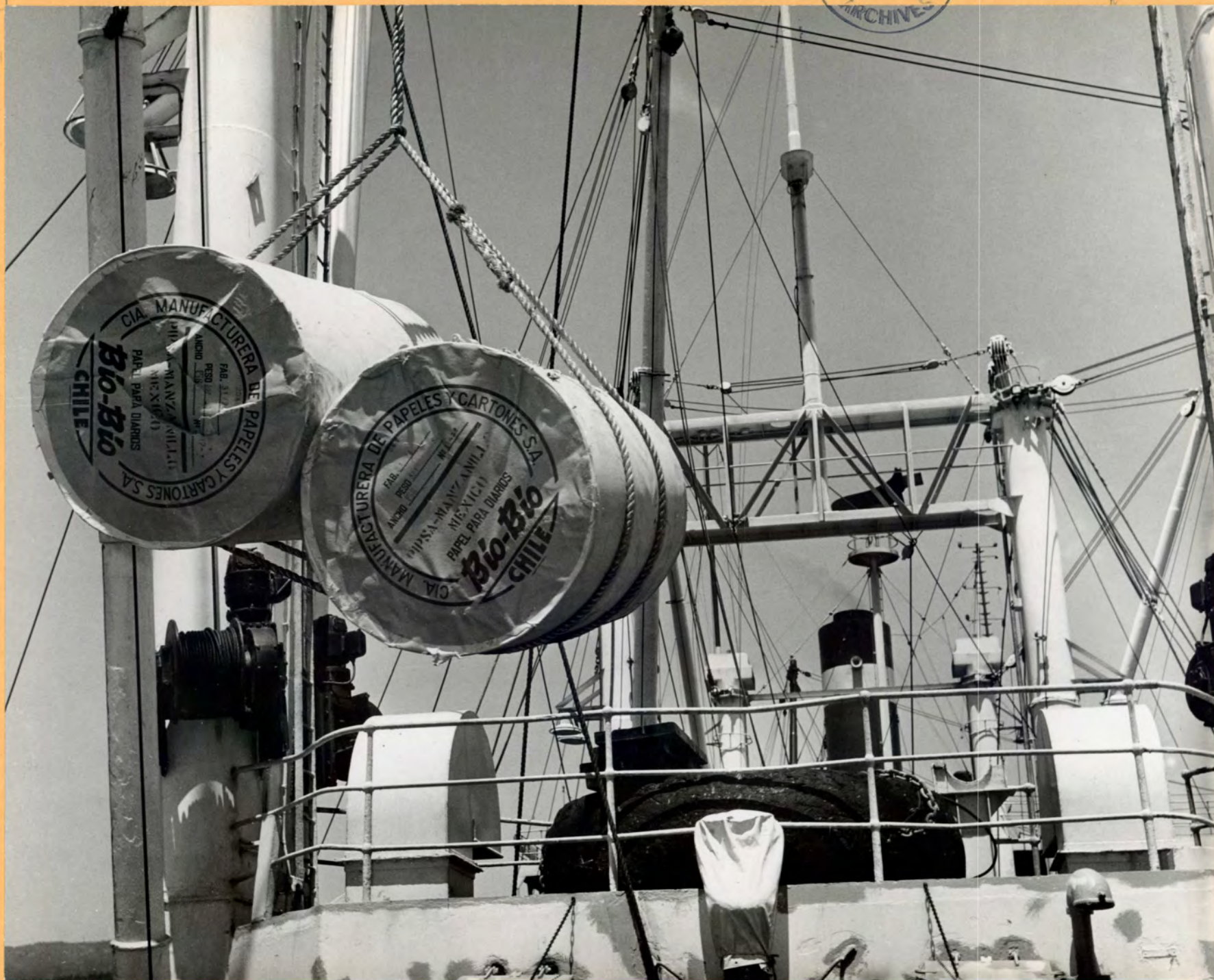




25

IBRD / LIDA  
AV/85  
WBG  
ARCHIVES

83-CH-8



22  
picas

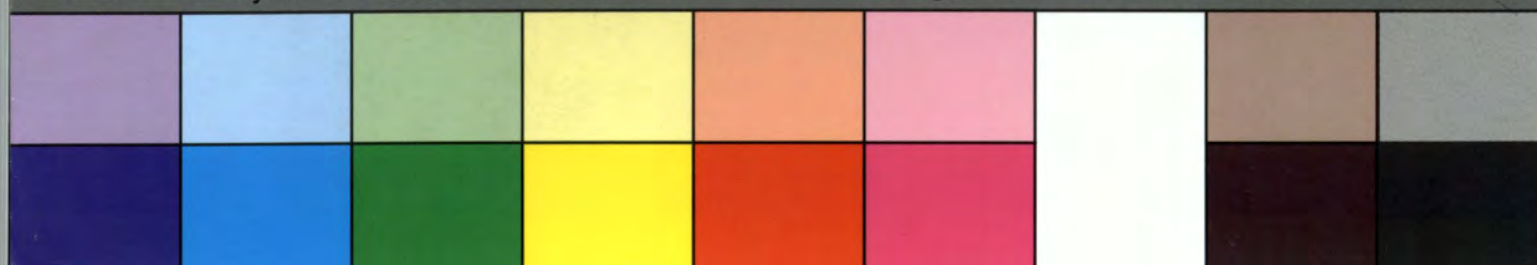
Inches 1 2 3 4 5 6 7 8

Centimetres 1 2 3 4 5 6 7 8 9 10 11 12 13 14 15 16 17 18 19

**KODAK Color Control Patches** © The Tiffen Company, 2000

**Kodak**  
LICENSED PRODUCT

Blue Cyan Green Yellow Red Magenta White 3/Color Black





IBRD / IDA  
AV / 85  
WBG  
ARCHIVES

83-CH-9



20  
picas

20  
picas

32 picas

Inches 1 2 3 4 5 6 7 8

Centimetres 1 2 3 4 5 6 7 8 9 10 11 12 13 14 15 16 17 18 19

KODAK Color Control Patches © The Tiffen Company, 2000

Kodak  
LICENSED PRODUCT

Blue Cyan Green Yellow Red Magenta White 3/Color Black



MEMO LIBRARY

| Publication | Date of Issue | Page Number | Publication   | Date of Issue  | Page Number |
|-------------|---------------|-------------|---|--|-------------|
|             |               |             | <p>Photo: Bob Borowicz, Santiago</p> <p>November 1960</p> | <p><u>INTERNATIONAL BANK FOR RECONSTRUCTION AND DEVELOPMENT</u><br/> <u>Washington, D.C. 20433</u></p> <p>83-CH-9 All Chilean newsprint is made on this one machine at the Concepcion mill of Papeles y Cartones, Ltda. The machine has a capacity of 60,000 tons a year, working 24 hours a day, and was imported from Germany by means of a WORLD BANK loan.</p> |             |

World Bank  
 ORDER No. \_\_\_\_\_

83-C17-10



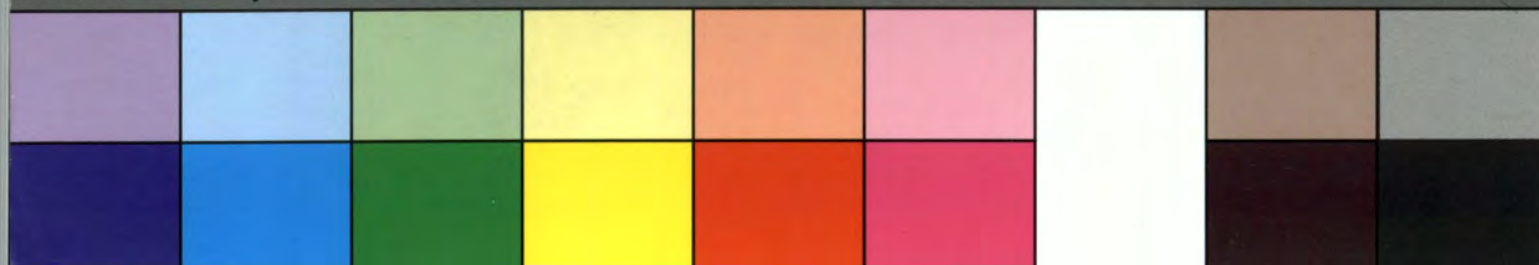
Inches 1 2 3 4 5 6 7 8

Centimetres 1 2 3 4 5 6 7 8 9 10 11 12 13 14 15 16 17 18 19

**KODAK Color Control Patches** © The Tiffen Company, 2000

**Kodak**  
LICENSED PRODUCT

Blue Cyan Green Yellow Red Magenta White 3/Color Black







83-CH-

IBRD / IDA  
AV/85  
WBG  
ARCHIVES



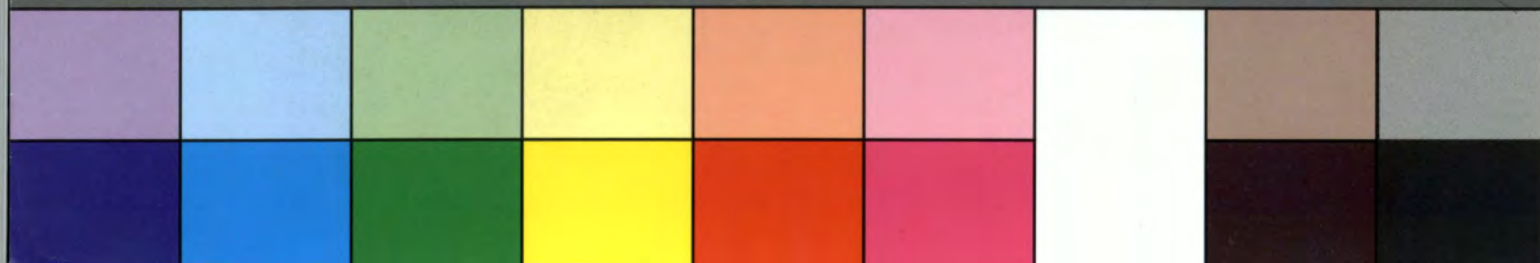
Inches 1 2 3 4 5 6 7 8

Centimetres 1 2 3 4 5 6 7 8 9 10 11 12 13 14 15 16 17 18 19

**KODAK Color Control Patches** © The Tiffen Company, 2000

**Kodak**  
LICENSED PRODUCT

Blue Cyan Green Yellow Red Magenta White 3/Color Black





83-CH-12



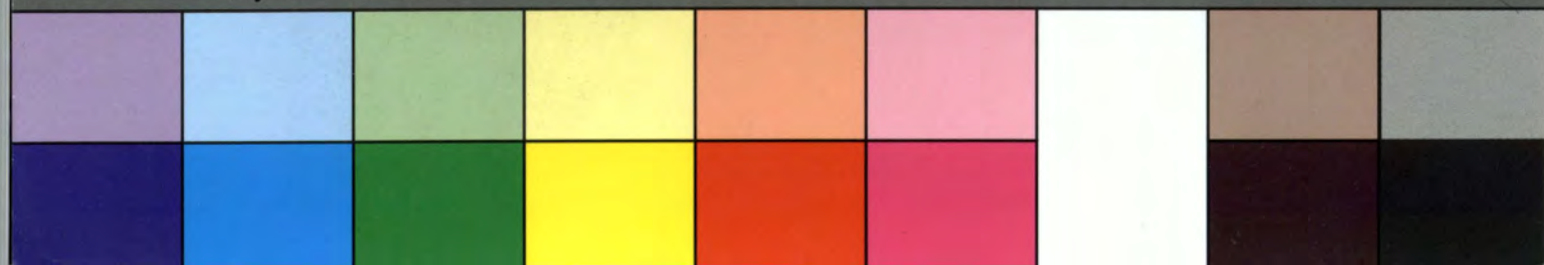
Inches 1 2 3 4 5 6 7 8

Centimetres 1 2 3 4 5 6 7 8 9 10 11 12 13 14 15 16 17 18 19

**KODAK Color Control Patches** © The Tiffen Company, 2000

**Kodak**  
LICENSED PRODUCT

Blue Cyan Green Yellow Red Magenta White 3/Color Black





83-c H-13

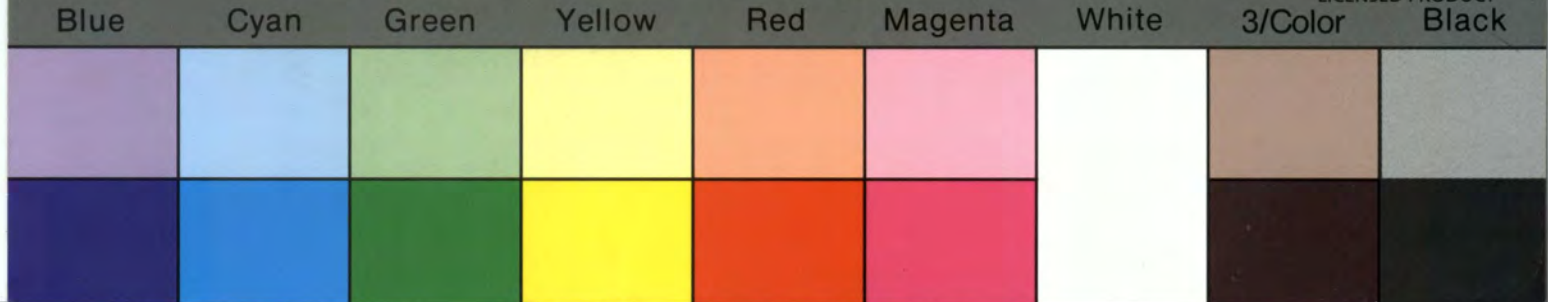
IBRD / IDA  
AV/85  
WBG  
ARCHIVES



Inches 1 2 3 4 5 6 7 8  
Centimetres 1 2 3 4 5 6 7 8 9 10 11 12 13 14 15 16 17 18 19

**KODAK Color Control Patches** © The Tiffen Company, 2000

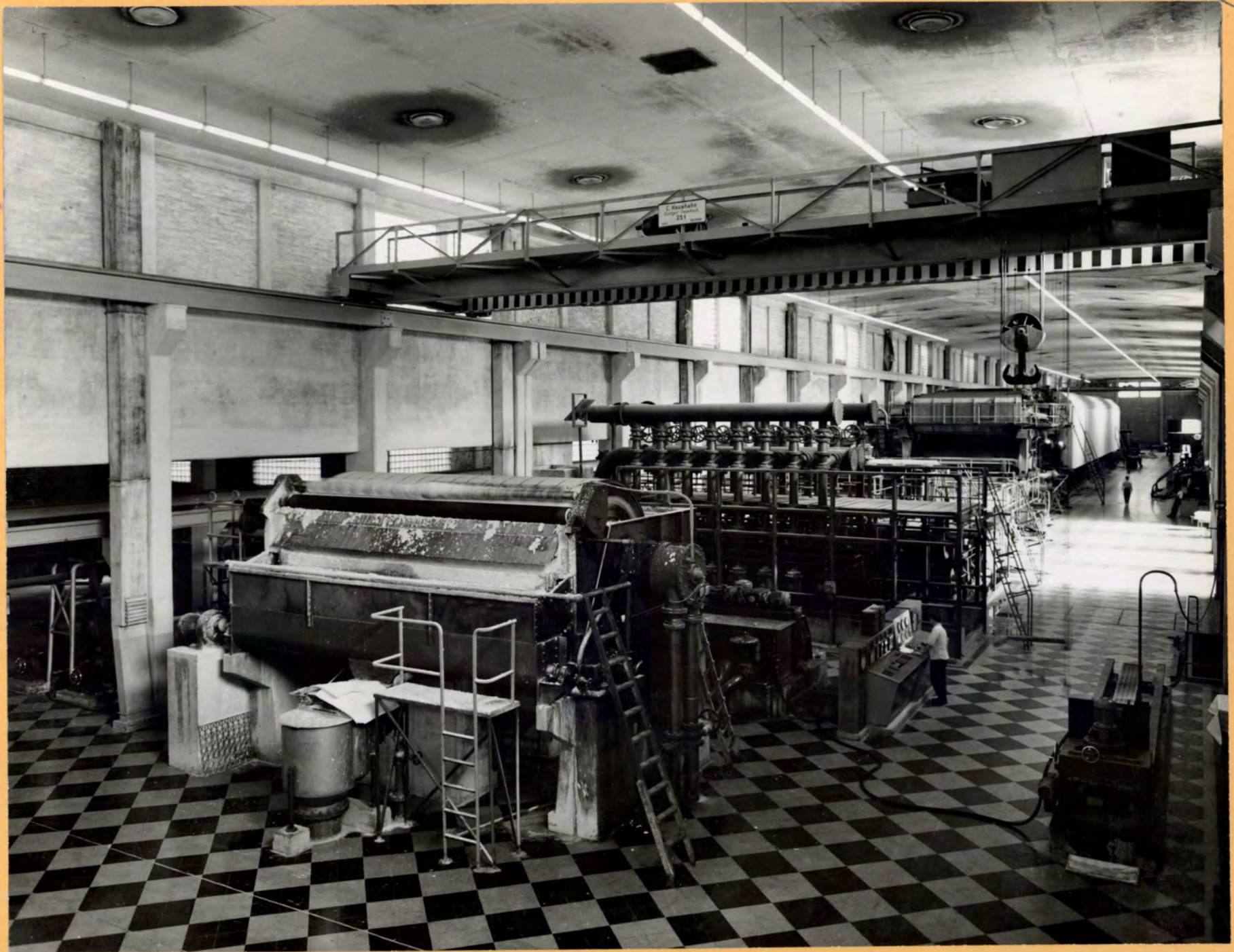
**Kodak**  
LICENSED PRODUCT





83-CH-14

IBRD/IDA  
AV/85  
WBG  
ARCHIVES



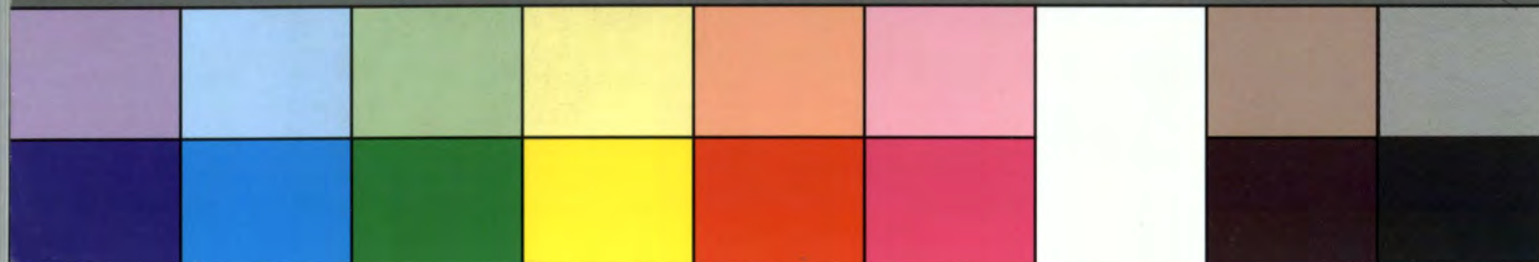
Inches 1 2 3 4 5 6 7 8

Centimetres 1 2 3 4 5 6 7 8 9 10 11 12 13 14 15 16 17 18 19

**KODAK Color Control Patches** © The Tiffen Company, 2000

**Kodak**  
LICENSED PRODUCT

Blue Cyan Green Yellow Red Magenta White 3/Color Black







83-CH-15



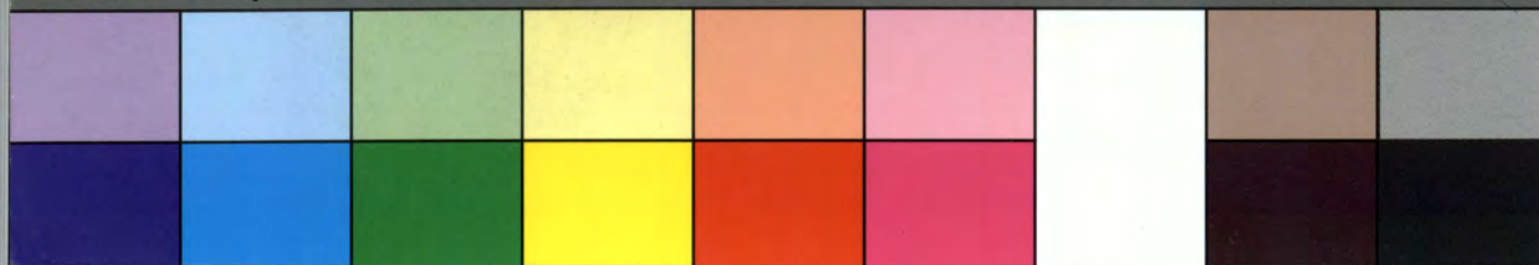
Inches 1 2 3 4 5 6 7 8

Centimetres 1 2 3 4 5 6 7 8 9 10 11 12 13 14 15 16 17 18 19

KODAK Color Control Patches © The Tiffen Company, 2000

Kodak  
LICENSED PRODUCT

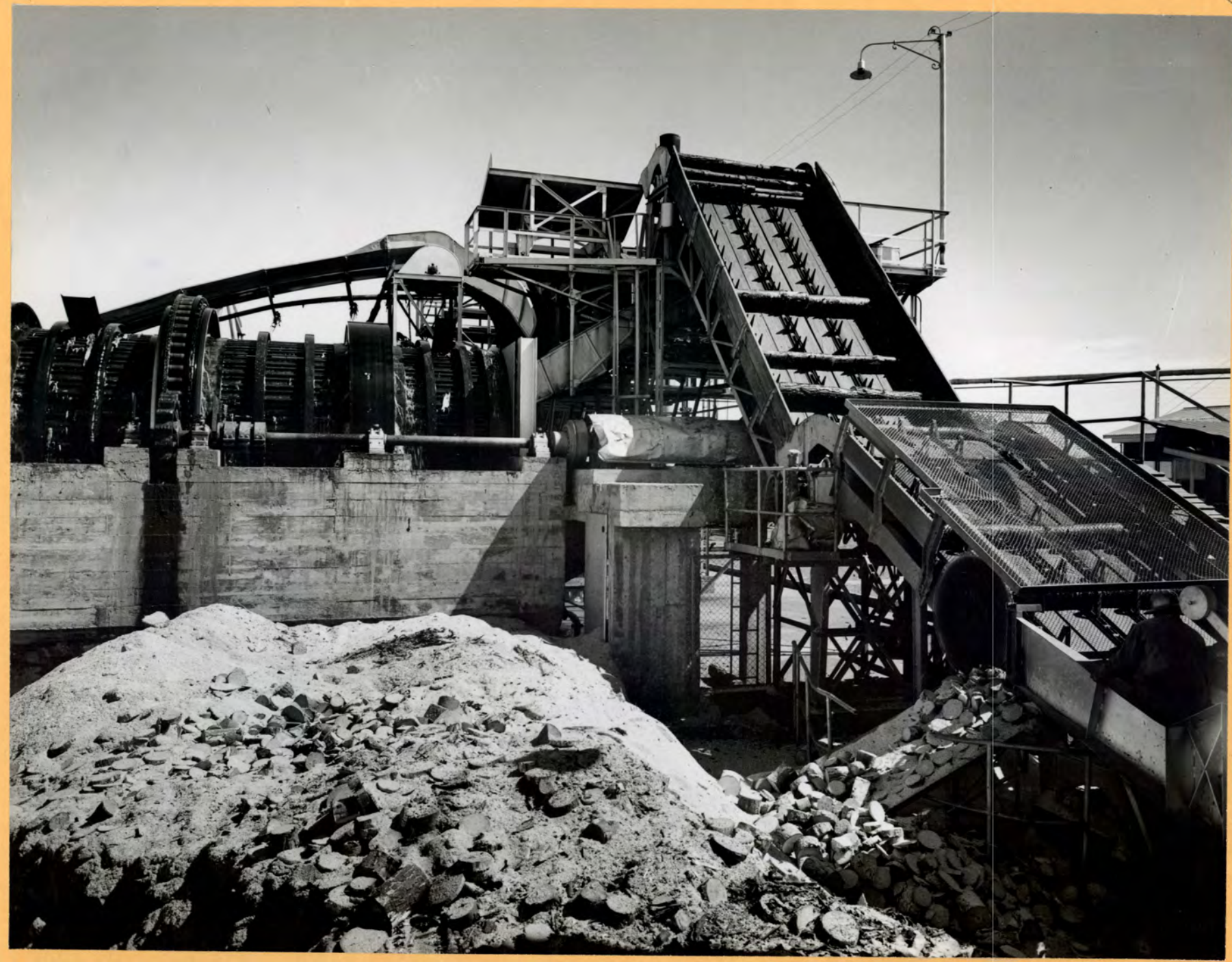
Blue Cyan Green Yellow Red Magenta White 3/Color Black





83-CH-16

IBRD/IDA  
AV/85  
WBG  
ARCHIVES



Inches 1 2 3 4 5 6 7 8

Centimetres 1 2 3 4 5 6 7 8 9 10 11 12 13 14 15 16 17 18 19

**KODAK Color Control Patches** © The Tiffen Company, 2000

**Kodak**  
LICENSED PRODUCT

Blue Cyan Green Yellow Red Magenta White 3/Color Black





83-CH-17

IBRD / IDA  
AV185  
WBG  
ARCHIVES



Inches 1 2 3 4 5 6 7 8

Centimetres 1 2 3 4 5 6 7 8 9 10 11 12 13 14 15 16 17 18 19

KODAK Color Control Patches © The Tiffen Company, 2000

Kodak  
LICENSED PRODUCT

Blue Cyan Green Yellow Red Magenta White 3/Color Black





Laya



83-CH-18



Inches 1 2 3 4 5 6 7 8

Centimetres 1 2 3 4 5 6 7 8 9 10 11 12 13 14 15 16 17 18 19

**KODAK Color Control Patches** © The Tiffen Company, 2000

**Kodak**  
LICENSED PRODUCT

Blue Cyan Green Yellow Red Magenta White 3/Color Black



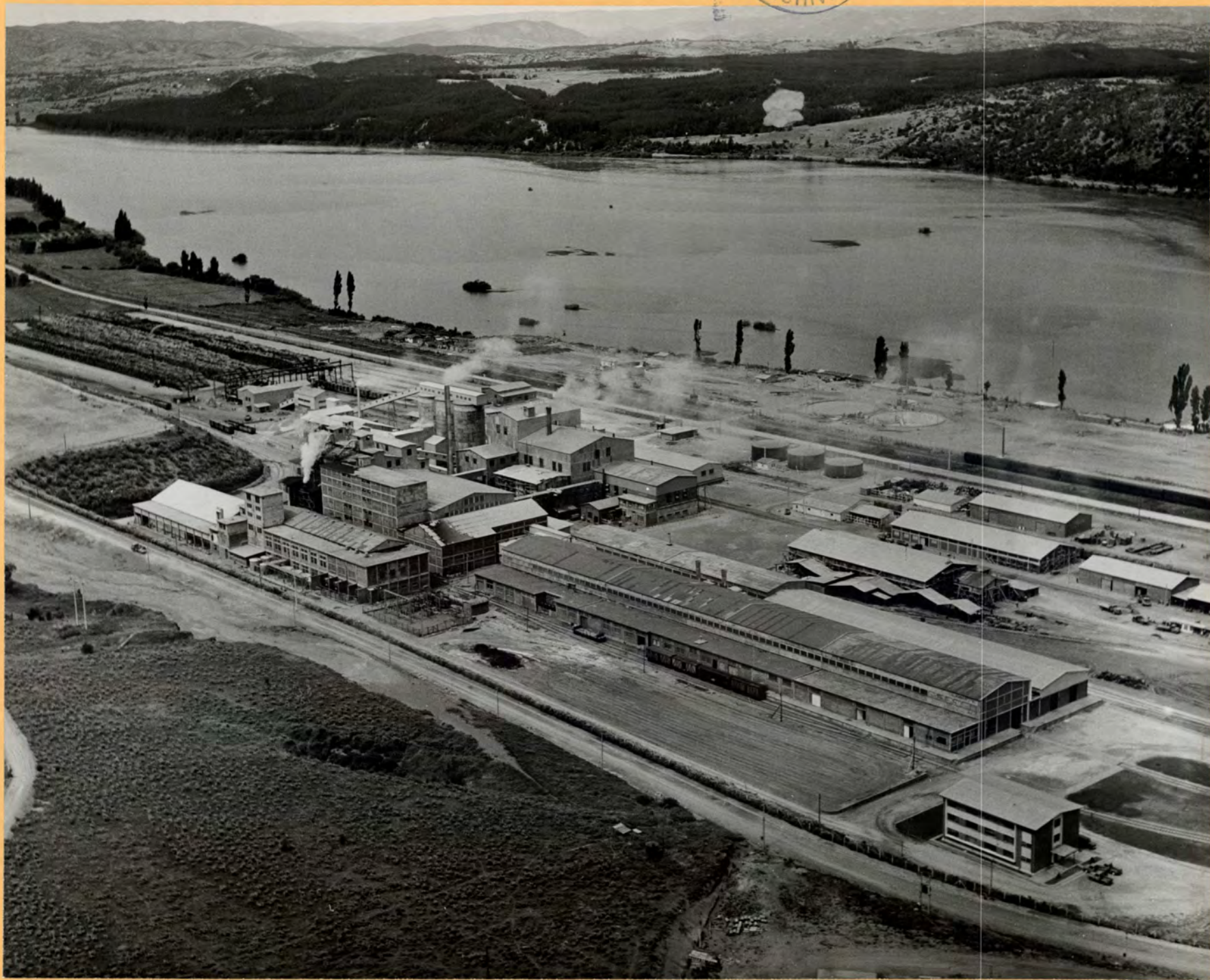




LASA F-54-CH-2

IBID / IDA  
AV 185  
WBG  
ARCHIVES

83-CH-19



Inches 1 2 3 4 5 6 7 8

Centimetres 1 2 3 4 5 6 7 8 9 10 11 12 13 14 15 16 17 18 19

**KODAK Color Control Patches** © The Tiffen Company, 2000

**Kodak**  
LICENSED PRODUCT

Blue Cyan Green Yellow Red Magenta White 3/Color Black



30

INTERNATIONAL BANK FOR RECONSTRUCTION AND DEVELOPMENT  
PHOTO DISTRIBUTION

Form No. 156A  
(11-56)

| Publication   | Date of Issue | Page Number | Publication  | Date of Issue   | Page Number  |
|---|---------------|-------------|--|---|--|
| <p>INTERNATIONAL BANK FOR RECONSTRUCTION AND DEVELOPMENT<br/>Washington, D.C. 20433</p> <p>83-CH-19 The Laja chemical pulp plant of the Compania<br/>Manufacturera de Papales y Cartones, S.A., of Chile.<br/>The plant, near Concepcion, was built with the aid of<br/>a WORLD BANK loan.</p> <p>Photo: Bob Borowicz, Santiago<br/>November 1960</p> |               |             | <p>83-CH-19 The Laja chemical pulp plant of the Compania<br/>Manufacturera de Papales y Cartones, S.A., of Chile. This<br/>plant, near Concepcion, is being expanded with the assistance<br/>of an investment of \$3 million from the INTERNATIONAL FINANCE<br/>CORPORATION, a \$16 million loan from the Inter-American<br/>Development Bank and \$12.5 million from the firm's own capital.</p> <p>Photo: Bob Borowicz, Santiago, Chile.</p> | <p><u>INTERNATIONAL FINANCE CORPORATION (IFC), Washington 25, D.C.</u><br/><i>F-54-CH-2</i></p> | <p><u>HOLD FOR RELEASE FOR A.M. PAPERS SATURDAY, NOVEMBER 24, 1962</u></p> |

FRAME 7

83-CH-20

IBRD I.I.D.A.  
AV 185  
WBG  
ARCHIVES



Inches 1 2 3 4 5 6 7 8

Centimetres 1 2 3 4 5 6 7 8 9 10 11 12 13 14 15 16 17 18 19

**KODAK Color Control Patches** © The Tiffen Company, 2000

**Kodak**  
LICENSED PRODUCT

Blue Cyan Green Yellow Red Magenta White 3/Color Black



INTERNATIONAL BANK FOR RECONSTRUCTION AND DEVELOPMENT, Washington 25, D.C.

83-CH-20 Pine logs arrive in chartered trucks from supplying centers in the provinces of Concepcion and Bio-Bio to the Laja Pulp Mill. They are unloaded into conveyors at entrance of mill.

Photo: Mr. Jorge Bravo for WORLD BANK

October 1962

Photo: World Bank Staff

83-CH-20 Pine logs arrive in chartered trucks from supplying centers in the provinces of Concepcion and Bio-Bio to the Laja Chemical Pulp Mill. They are unloaded into conveyors at entrance of mill. The mill, located on the main railway line running between Concepcion and Santiago, Chile, was built with the aid of a WORLD BANK loan.

---

INTERNATIONAL BANK FOR RECONSTRUCTION AND DEVELOPMENT  
Washington, D.C. 20543