

THE WORLD BANK GROUP ARCHIVES

PUBLIC DISCLOSURE AUTHORIZED

Folder Title: Country Photographs - Ethiopia - Loan 523 - Photographs - Volume 2

Folder ID: 30239317

Fonds: Records of Office of External Affairs (WB IBRD/IDA EXT)

Digitized: October 22, 2014

To cite materials from this archival folder, please follow the following format:
[Descriptive name of item], [Folder Title], Folder ID [Folder ID], World Bank Group Archives, Washington, D.C., United States.

The records in this folder were created or received by The World Bank in the course of its business.

The records that were created by the staff of The World Bank are subject to the Bank's copyright.

Please refer to <http://www.worldbank.org/terms-of-use-earchives> for full copyright terms of use and disclaimers.



THE WORLD BANK
Washington, D.C.

© 2012 International Bank for Reconstruction and Development / International Development Association or
The World Bank
1818 H Street NW
Washington DC 20433
Telephone: 202-473-1000
Internet: www.worldbank.org

PUBLIC DISCLOSURE AUTHORIZED

ETHIOPIA

LOAN 523

VOL. 2

DECLASSIFIED
WBG Archives

The World Bank Group
Archives
30239317
R2002-110 Other #: 60 217390B
Country Photographs - Ethiopia - Loan 523 - Photographs - Volume 2

D-111-ET-38

523-ET-38



Inches 1 2 3 4 5 6 7 8

Centimetres 1 2 3 4 5 6 7 8 9 10 11 12 13 14 15 16 17 18 19

KODAK Color Control Patches © The Tiffen Company, 2000

Kodak
LICENSED PRODUCT

Blue Cyan Green Yellow Red Magenta White 3/Color Black



INTERNATIONAL BANK FOR RECONSTRUCTION AND DEVELOPMENT
INTERNATIONAL DEVELOPMENT ASSOCIATION (IDA)
Washington, D.C. 20433

D-111-ET-38

523-ET-38 A truck load of telephone poles being
hailed to Dire Dawa, Ethiopia.

WORLD BANK and IDA funds are assisting a
highway development program in Ethiopia which
concentrates mainly on roads which will assist the
development of agriculture.

Photo: Kay Muldoon for WORLD BANK GROUP. Nov. 1969

D-III-ET-39

523-ET-39



Inches 1 2 3 4 5 6 7 8

Centimetres 1 2 3 4 5 6 7 8 9 10 11 12 13 14 15 16 17 18 19

KODAK Color Control Patches © The Tiffen Company, 2000

Kodak
LICENSED PRODUCT

Blue Cyan Green Yellow Red Magenta White 3/Color Black



INTERNATIONAL BANK FOR RECONSTRUCTION AND DEVELOPMENT
INTERNATIONAL DEVELOPMENT ASSOCIATION (IDA)
Washington, D.C. 20433

D-111-ET-39

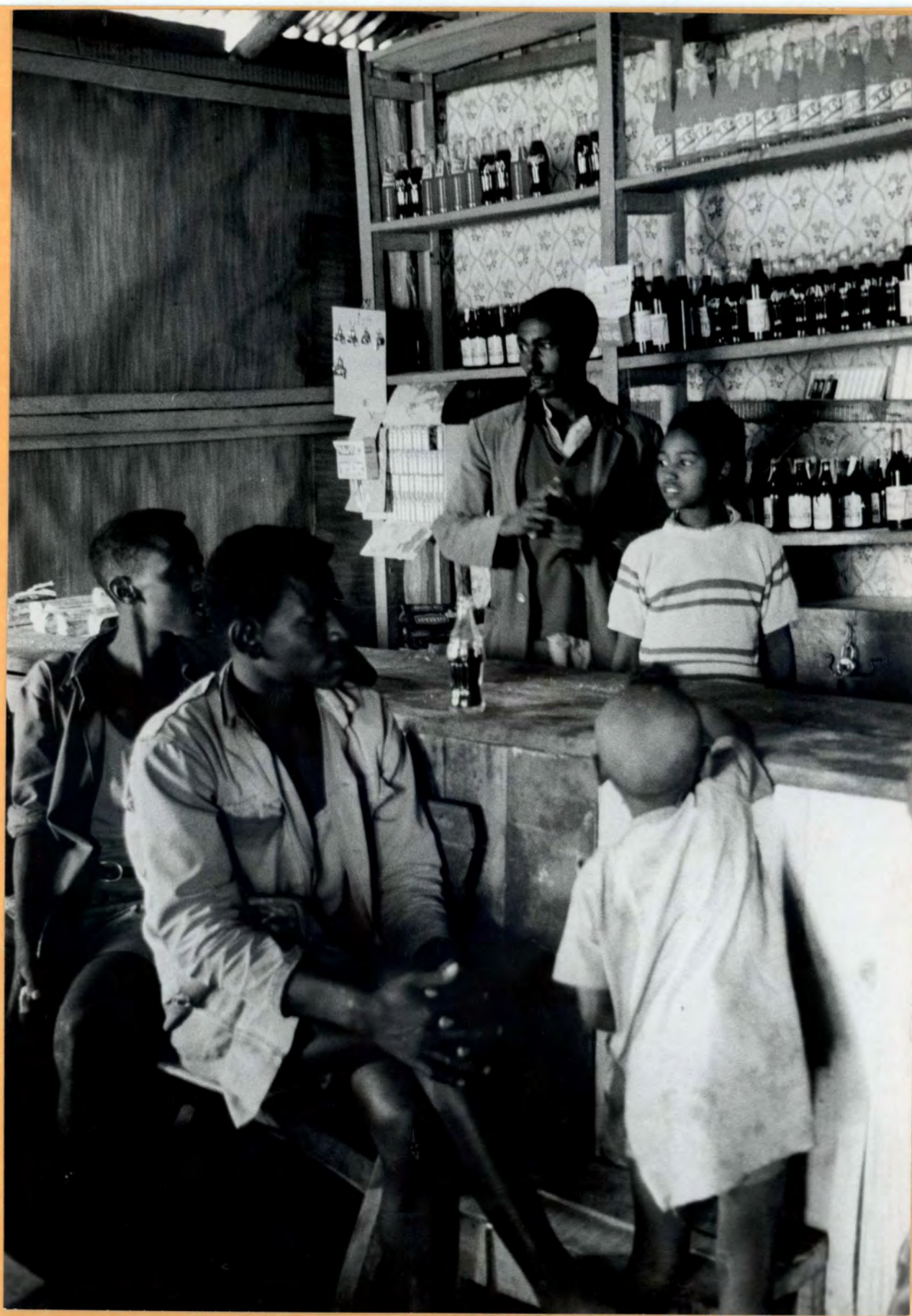
523-ET-39 A bus picking up passengers at a road
junction on the way to Dire Dawa in Ethiopia.

WORLD BANK and IDA funds are assisting a
highway development program in Ethiopia which
concentrates mainly on roads which will assist the
development of agriculture.

Photo: Kay Muldoon for WORLD BANK GROUP. Nov. 1969

D-111-ET-40

S23-ET-40



Inches 1 2 3 4 5 6 7 8

Centimetres 1 2 3 4 5 6 7 8 9 10 11 12 13 14 15 16 17 18 19

KODAK Color Control Patches © The Tiffen Company, 2000

Kodak
LICENSED PRODUCT

Blue Cyan Green Yellow Red Magenta White 3/Color Black



INTERNATIONAL BANK FOR RECONSTRUCTION AND DEVELOPMENT
INTERNATIONAL DEVELOPMENT ASSOCIATION (IDA)
Washington, D.C. 20433

D-111-ET-40

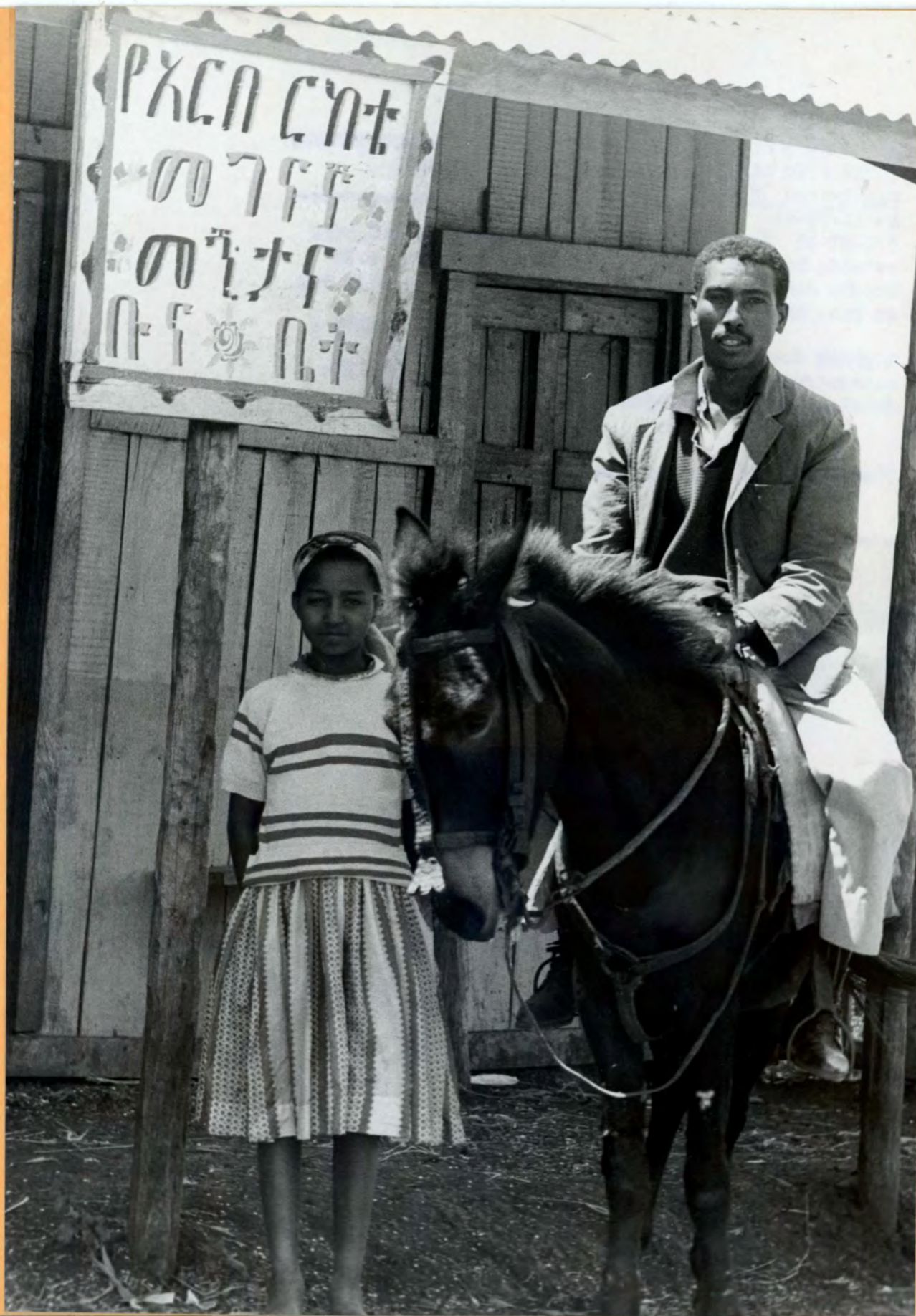
523-ET-40 Ato Ingida Aseaw owns a new shop selling hard and soft drinks and cigarettes, at a road junction on the way to Dire Dawa in Ethiopia.

WORLD BANK and IDA funds are assisting a highway development program in Ethiopia which concentrates mainly on roads which will assist the development of agriculture.

Photo: Kay Muldoon for WORLD BANK GROUP. Nov. 1969

Q-III-ET-41

523-ET-41



Inches 1 2 3 4 5 6 7 8

Centimetres 1 2 3 4 5 6 7 8 9 10 11 12 13 14 15 16 17 18 19

KODAK Color Control Patches © The Tiffen Company, 2000

Kodak
LICENSED PRODUCT

Blue Cyan Green Yellow Red Magenta White 3/Color Black



INTERNATIONAL BANK FOR RECONSTRUCTION AND DEVELOPMENT
INTERNATIONAL DEVELOPMENT ASSOCIATION (IDA)
Washington, D.C. 20433

D-111-ET-41

523-ET-41 Ato Ingida Aseaw poses with his daughter outside his new shop where he sells hard and soft drinks and cigarettes, at a road junction on the way to Dire Dawa in Ethiopia.

WORLD BANK and IDA funds are assisting a highway development program in Ethiopia which concentrates mainly on roads which will assist the development of agriculture.

Photo: Kay Muldoon for WORLD BANK GROUP. Nov. 1969

2.111-ET-42

523-ET-42



Inches 1 2 3 4 5 6 7 8

Centimetres 1 2 3 4 5 6 7 8 9 10 11 12 13 14 15 16 17 18 19

KODAK Color Control Patches © The Tiffen Company, 2000

Kodak
LICENSED PRODUCT

Blue Cyan Green Yellow Red Magenta White 3/Color Black



INTERNATIONAL BANK FOR RECONSTRUCTION AND DEVELOPMENT
INTERNATIONAL DEVELOPMENT ASSOCIATION (IDA)
Washington, D.C. 20433

D-111-ET-42

523-ET-42 Ato Ingida Aseaw's farm where he grows
fesoulia (beans) which he ships to Dire Dawa by
truck along the new road.

WORLD BANK and IDA funds are assisting a
highway development program in Ethiopia which
concentrates mainly on roads which will assist the
development of agriculture.

Photo: Kay Muldoon for WORLD BANK GROUP. Nov. 1969

D-111-ET-43

S23-ET-43



Inches 1 2 3 4 5 6 7 8

Centimetres 1 2 3 4 5 6 7 8 9 10 11 12 13 14 15 16 17 18 19

KODAK Color Control Patches © The Tiffen Company, 2000

Kodak
LICENSED PRODUCT

Blue Cyan Green Yellow Red Magenta White 3/Color Black



INTERNATIONAL BANK FOR RECONSTRUCTION AND DEVELOPMENT
INTERNATIONAL DEVELOPMENT ASSOCIATION (IDA)
Washington, D.C. 20433

D-111-ET-43

523-ET-43 Women selling fruit at a junction in the road on the way to Dire Dawa in Ethiopia.

WORLD BANK and IDA funds are assisting a highway development program in Ethiopia which concentrates mainly on roads which will assist the development of agriculture.

Photo: Kay Muldoon for WORLD BANK GROUP. Nov. 1969

R-111-ET-44

523-ET-44



Inches 1 2 3 4 5 6 7 8

Centimetres 1 2 3 4 5 6 7 8 9 10 11 12 13 14 15 16 17 18 19

KODAK Color Control Patches © The Tiffen Company, 2000

Kodak
LICENSED PRODUCT

Blue Cyan Green Yellow Red Magenta White 3/Color Black



INTERNATIONAL BANK FOR RECONSTRUCTION AND DEVELOPMENT
INTERNATIONAL DEVELOPMENT ASSOCIATION (IDA)
Washington, D.C. 20433

D-111-ET-44

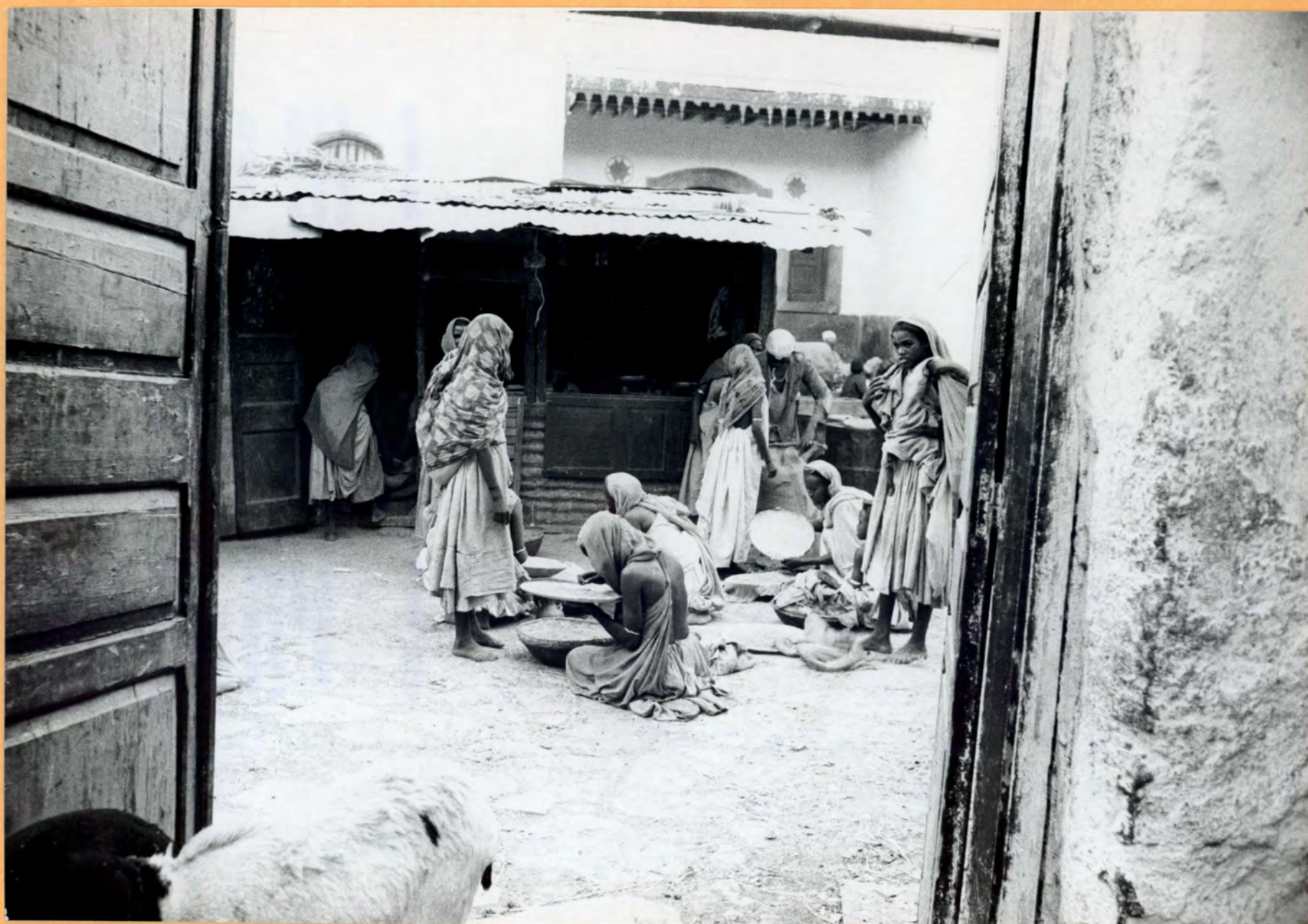
523-ET-44 Street scene in Harar, Ethiopia.

WORLD BANK and IDA funds are assisting a highway development program in Ethiopia which concentrates mainly on roads which will assist the development of agriculture.

Photo: Kay Muldoon for WORLD BANK GROUP. Nov. 1969

D-III-ET-45

523-ET-45



Inches 1 2 3 4 5 6 7 8

Centimetres 1 2 3 4 5 6 7 8 9 10 11 12 13 14 15 16 17 18 19

KODAK Color Control Patches © The Tiffen Company, 2000

Kodak
LICENSED PRODUCT

Blue Cyan Green Yellow Red Magenta White 3/Color Black



INTERNATIONAL BANK FOR RECONSTRUCTION AND DEVELOPMENT
INTERNATIONAL DEVELOPMENT ASSOCIATION (IDA)
Washington, D.C. 20433

D-111-ET-45

523-ET-45 A basket maker's shop in Harar, Ethiopia.

WORLD BANK and IDA funds are assisting a
highway development program in Ethiopia which
concentrates mainly on roads which will assist the
development of agriculture.

Photo: Kay Muldoon for WORLD BANK GROUP. Nov. 1969

P-III-ET-46

S23-ET-46



Inches 1 2 3 4 5 6 7 8

Centimetres 1 2 3 4 5 6 7 8 9 10 11 12 13 14 15 16 17 18 19

KODAK Color Control Patches © The Tiffen Company, 2000

Kodak
LICENSED PRODUCT

Blue Cyan Green Yellow Red Magenta White 3/Color Black



INTERNATIONAL BANK FOR RECONSTRUCTION AND DEVELOPMENT
INTERNATIONAL DEVELOPMENT ASSOCIATION (IDA)
Washington, D.C. 20433

D-111-ET-46

523-ET-46 A young Ethiopian girl works at weaving
a basket in a shop in Harar, the town at the end of
the IDA-financed highway.

Photo: Kay Muldoon for WORLD BANK GROUP. Nov. 1969

D-III-ET-47

S23-ET-47



Inches 1 2 3 4 5 6 7 8

Centimetres 1 2 3 4 5 6 7 8 9 10 11 12 13 14 15 16 17 18 19

KODAK Color Control Patches © The Tiffen Company, 2000

Kodak

LICENSED PRODUCT

Blue

Cyan

Green

Yellow

Red

Magenta

White

3/Color

Black



INTERNATIONAL BANK FOR RECONSTRUCTION AND DEVELOPMENT
INTERNATIONAL DEVELOPMENT ASSOCIATION (IDA)

Washington, D.C. 20433

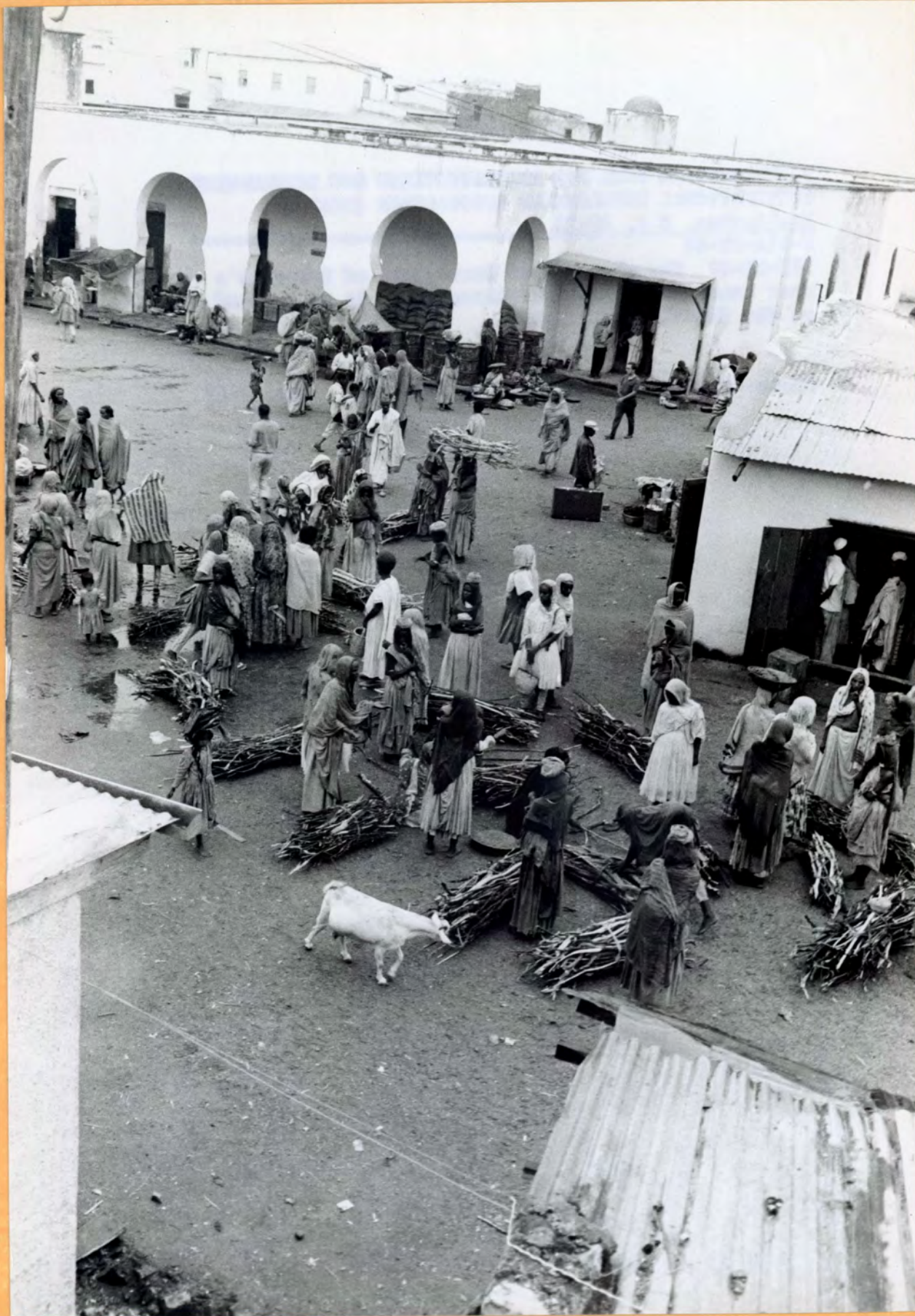
D-111-ET-47

523-ET-47 The old town of Harar, one of Ethiopia's
most interesting tourist attractions, is at the end
of the IDA-financed highway.

Photo: Kay Muldoon for WORLD BANK GROUP. Nov. 1969

D-111-ET-48

523-ET-48



Inches 1 2 3 4 5 6 7 8

Centimetres 1 2 3 4 5 6 7 8 9 10 11 12 13 14 15 16 17 18 19

KODAK Color Control Patches © The Tiffen Company, 2000

Kodak

LICENSED PRODUCT

Blue Cyan Green Yellow Red Magenta White 3/Color Black



INTERNATIONAL BANK FOR RECONSTRUCTION AND DEVELOPMENT
INTERNATIONAL DEVELOPMENT ASSOCIATION (IDA)
Washington, D.C. 20433

D-111-ET-48

523-ET-48 The old town of Harar, one of Ethiopia's
most interesting tourist attractions, is at the end
of the IDA-financed highway.

Photo: Kay Muldoon for WORLD BANK GROUP. Nov. 1969

D-111-ET-49

S23.ET-49



Inches 1 2 3 4 5 6 7 8

Centimetres 1 2 3 4 5 6 7 8 9 10 11 12 13 14 15 16 17 18 19

KODAK Color Control Patches © The Tiffen Company, 2000

Kodak

LICENSED PRODUCT

Blue Cyan Green Yellow Red Magenta White 3/Color Black



INTERNATIONAL BANK FOR RECONSTRUCTION AND DEVELOPMENT
INTERNATIONAL DEVELOPMENT ASSOCIATION (IDA)
Washington, D.C. 20433

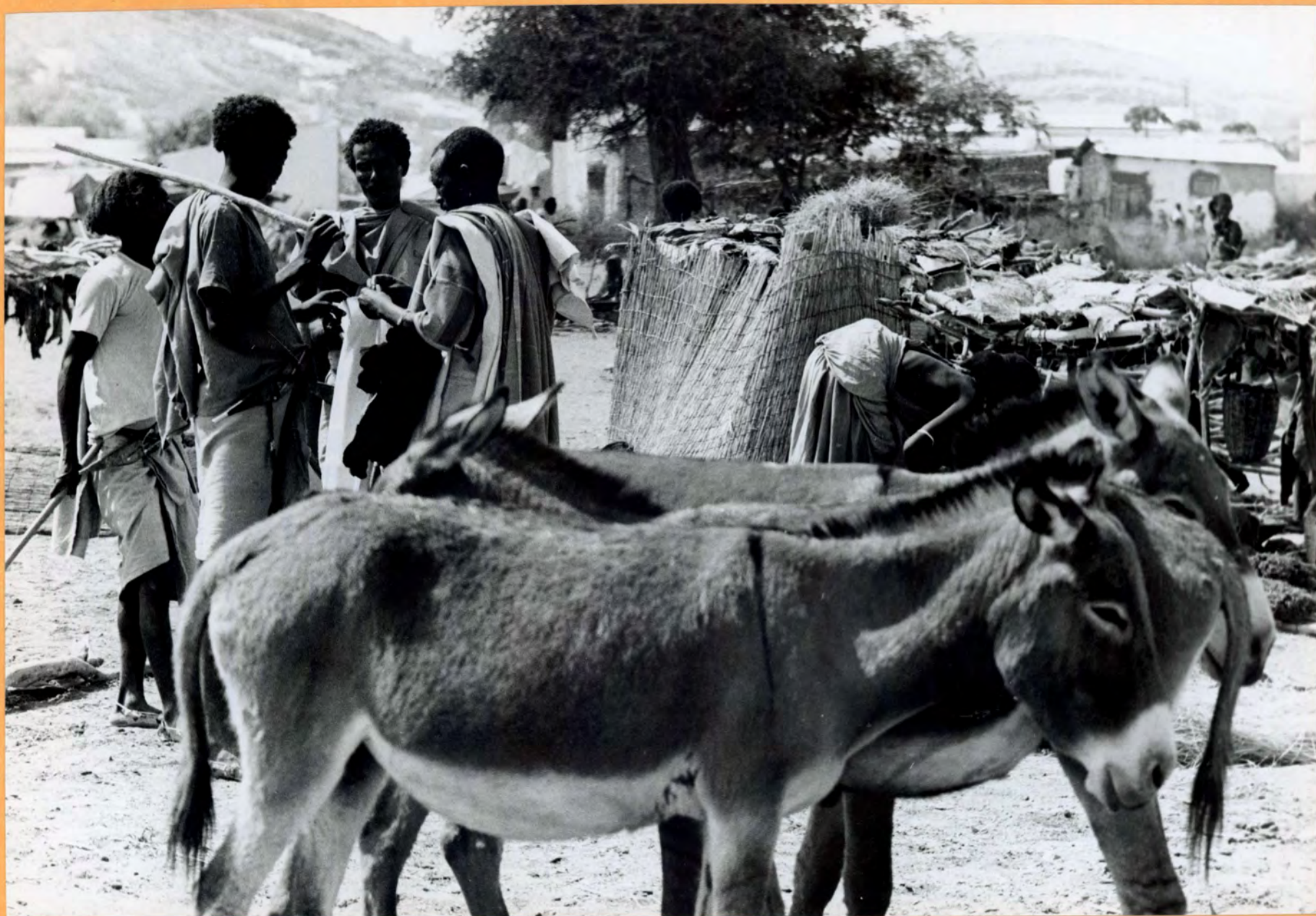
D-111-ET-49

523-ET-49 A young basket weaver in a shop in Harar,
one of Ethiopia's most interesting tourist
attractions, at the end of the IDA-financed highway.

Photo: Kay Muldeon for WORLD BANK GROUP. Nov. 1969

Q-III-ET-50

523-ET-52



INTERNATIONAL BANK FOR RECONSTRUCTION AND DEVELOPMENT
INTERNATIONAL DEVELOPMENT ASSOCIATION (IDA)
Washington, D.C. 20433

D-111-ET-50

523-ET-50 The market place in the old part of Dire
Dawa, a very important industrial area in Ethiopia.

WORLD BANK and IDA funds are assisting a
highway development program in Ethiopia which
concentrates mainly on roads which will assist the
development of agriculture.

Photo: Kay Muldoon for WORLD BANK GROUP. Nov. 1969

Q-III-ET-51

323-ET-51



INTERNATIONAL BANK FOR RECONSTRUCTION AND DEVELOPMENT
INTERNATIONAL DEVELOPMENT ASSOCIATION (IDA)
Washington, D.C. 20433

D-111-ET-51

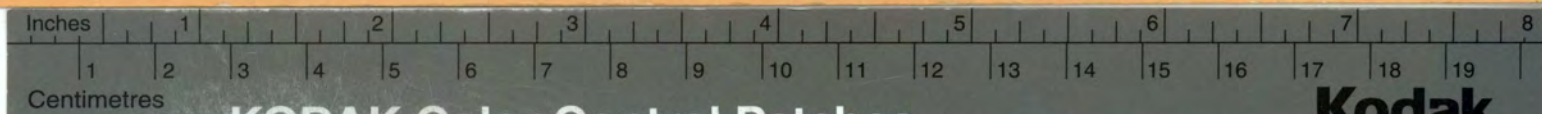
523-ET-51 The market place in the old part of Dire
Dawa, a very important industrial area in Ethiopia.

WORLD BANK and IDA funds are assisting a
highway development program in Ethiopia which
concentrates mainly on roads which will assist the
development of agriculture.

Photo: Kay Muldeon for WORLD BANK GROUP. Nov. 1969

D-III-ET-52

J23-ET-52



KODAK Color Control Patches © The Tiffen Company, 2000

Kodak
LICENSED PRODUCT

Blue Cyan Green Yellow Red Magenta White 3/Color Black



INTERNATIONAL BANK FOR RECONSTRUCTION AND DEVELOPMENT
INTERNATIONAL DEVELOPMENT ASSOCIATION (IDA)
Washington, D.C. 20433

D-111-ET-52

523-ET-52 The textile factory in Dire Dawa, a very important industrial area in Ethiopia.

WORLD BANK and IDA funds are assisting a highway development program in Ethiopia which concentrates mainly on roads which will assist the development of agriculture.

Photo: Kay Muldeon for WORLD BANK [REDACTED] Nov. 1969

LO-523-ET-53



Inches 1 2 3 4 5 6 7 8

Centimetres 1 2 3 4 5 6 7 8 9 10 11 12 13 14 15 16 17 18 19

KODAK Color Control Patches © The Tiffen Company, 2000

Kodak

LICENSED PRODUCT

Blue Cyan Green Yellow Red Magenta White 3/Color Black



WORLD BANK

1818 H Street, N.W., Washington, D. C., 20433, U.S.A.

LO-523-ET-53 The WORLD BANK and its affiliate, the INTERNATIONAL DEVELOPMENT ASSOCIATION (IDA), are assisting a highway development program in Ethiopia which concentrates mainly on roads which will assist the development of agriculture.

The textile factory in Dire Dawa, a very important industrial area in Ethiopia.

Please credit: WORLD BANK PHOTO by Kay Muldoon. 1969

Q-III-ET-54

523-ET-54



INTERNATIONAL BANK FOR RECONSTRUCTION AND DEVELOPMENT
INTERNATIONAL DEVELOPMENT ASSOCIATION (IDA)
Washington, D.C. 20433

D-111-ET-54

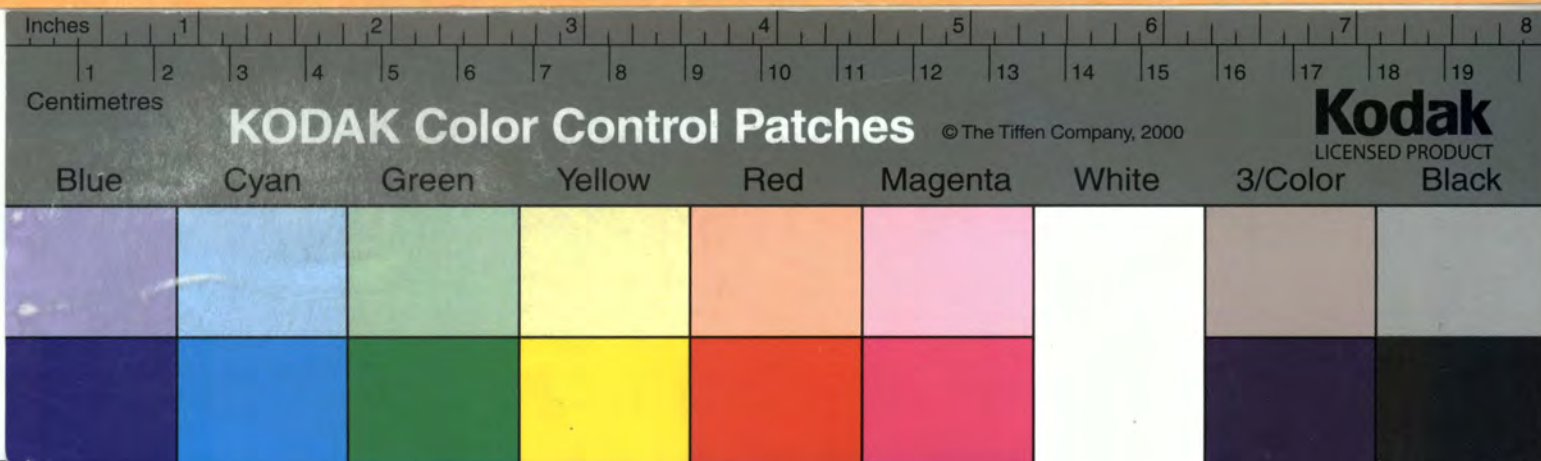
523-ET-54 A market scene in the village of Boreda,
Ethiopia.

WORLD BANK and IDA funds are assisting a
highway development program in Ethiopia which
concentrates mainly on roads which will assist the
development of agriculture.

Photo: Kay Muldoon for WORLD BANK GROUP. Nov. 1969

D-111-ET-55

523-ET-55



INTERNATIONAL BANK FOR RECONSTRUCTION AND DEVELOPMENT
INTERNATIONAL DEVELOPMENT ASSOCIATION (IDA)
Washington, D.C. 20433

D-111-ET-55

523-ET-55 Crowded market area in the village of
Boreda, Ethiopia.

WORLD BANK and IDA funds are assisting a
highway development program in Ethiopia which
concentrates mainly on roads which will assist the
development of agriculture.

Photo: Kay Muldoon for WORLD BANK GROUP. Nov. 1969

2.111-ET-56

523-ET-56



INTERNATIONAL BANK FOR RECONSTRUCTION AND DEVELOPMENT
INTERNATIONAL DEVELOPMENT ASSOCIATION (IDA)
Washington, D.C. 20433

D-111-ET-56

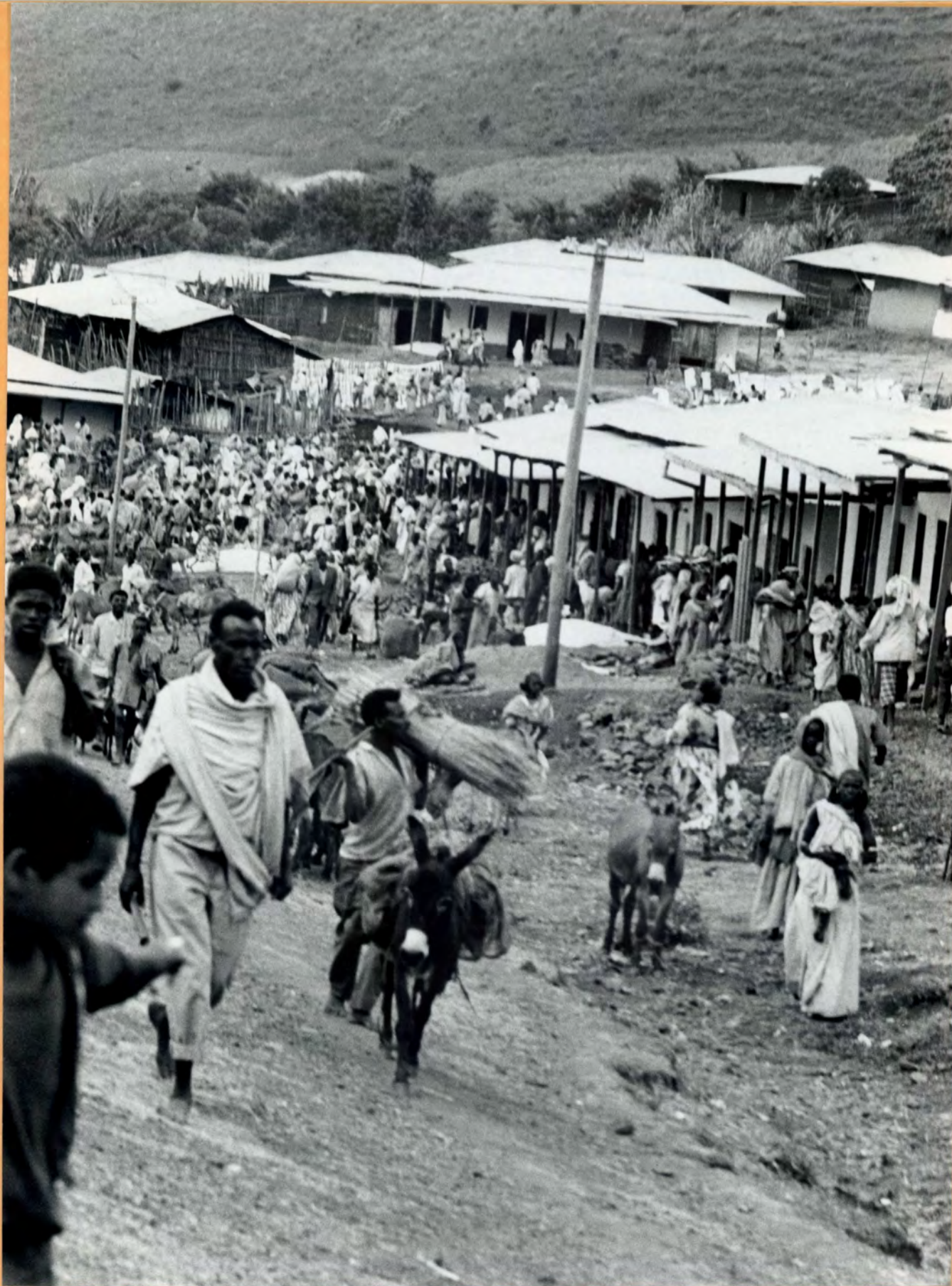
523-ET-56 Crowded market area in the village of
Boreda, Ethiopia.

WORLD BANK and IDA funds are assisting a
highway development program in Ethiopia which
concentrates mainly on roads which will assist the
development of agriculture.

Photo: Kay Muldoon for WORLD BANK GROUP. Nov. 1969

2.III.ET-57

S23-ET-57



INTERNATIONAL BANK FOR RECONSTRUCTION AND DEVELOPMENT
INTERNATIONAL DEVELOPMENT ASSOCIATION (IDA)
Washington, D.C. 20433

D-111-ET-57

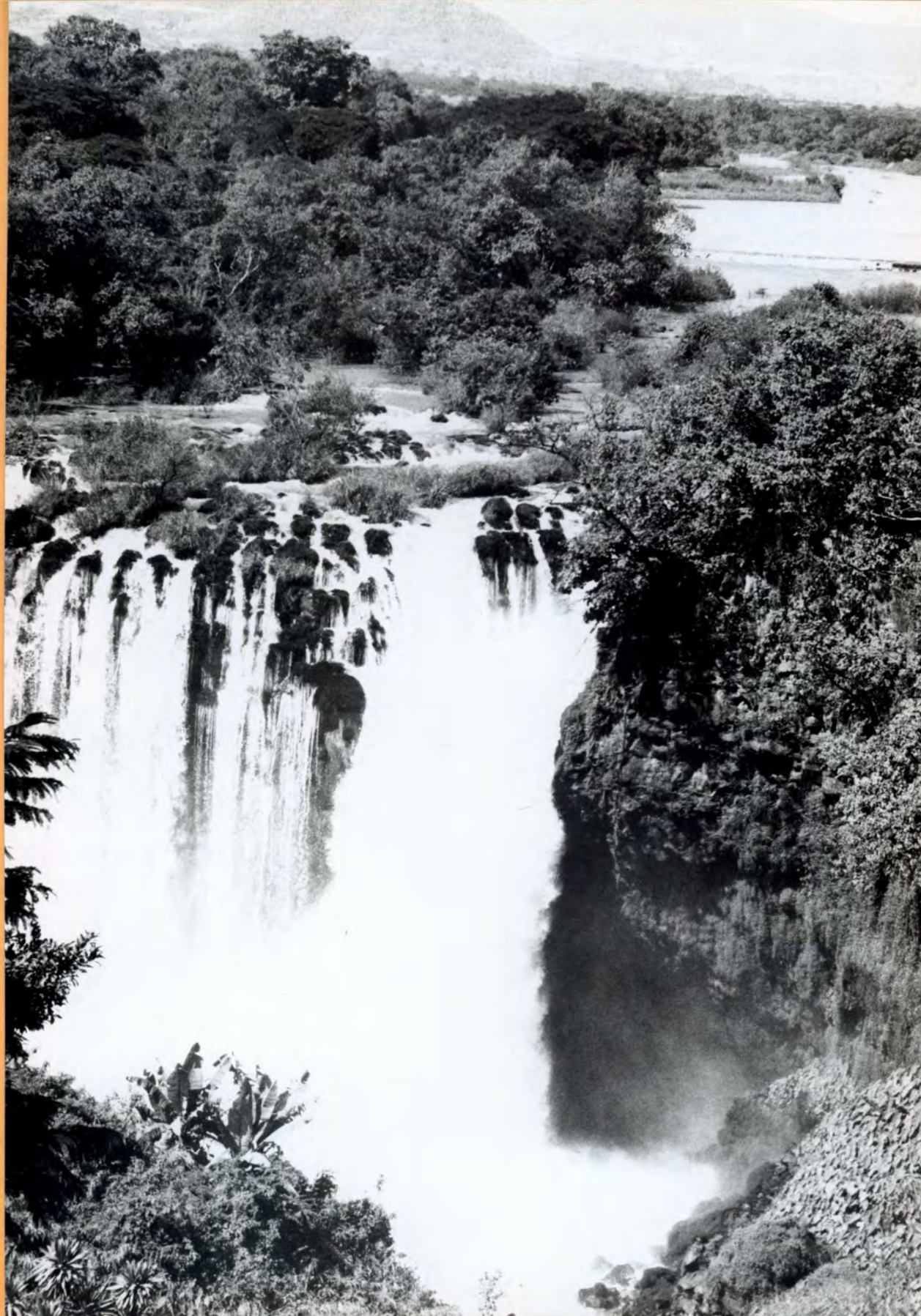
523-ET-57 Crowded market area in the village of
Boreda, Ethiopia.

WORLD BANK and IDA funds are assisting a
highway development program in Ethiopia which
concentrates mainly on roads which will assist the
development of agriculture.

Photo: Kay Muldoon for WORLD BANK GROUP. Nov. 1969

D-III-ET-58

523-ET-58



INTERNATIONAL BANK FOR RECONSTRUCTION AND DEVELOPMENT
INTERNATIONAL DEVELOPMENT ASSOCIATION (IDA)
Washington, D.C. 20433

D-111-ET-58

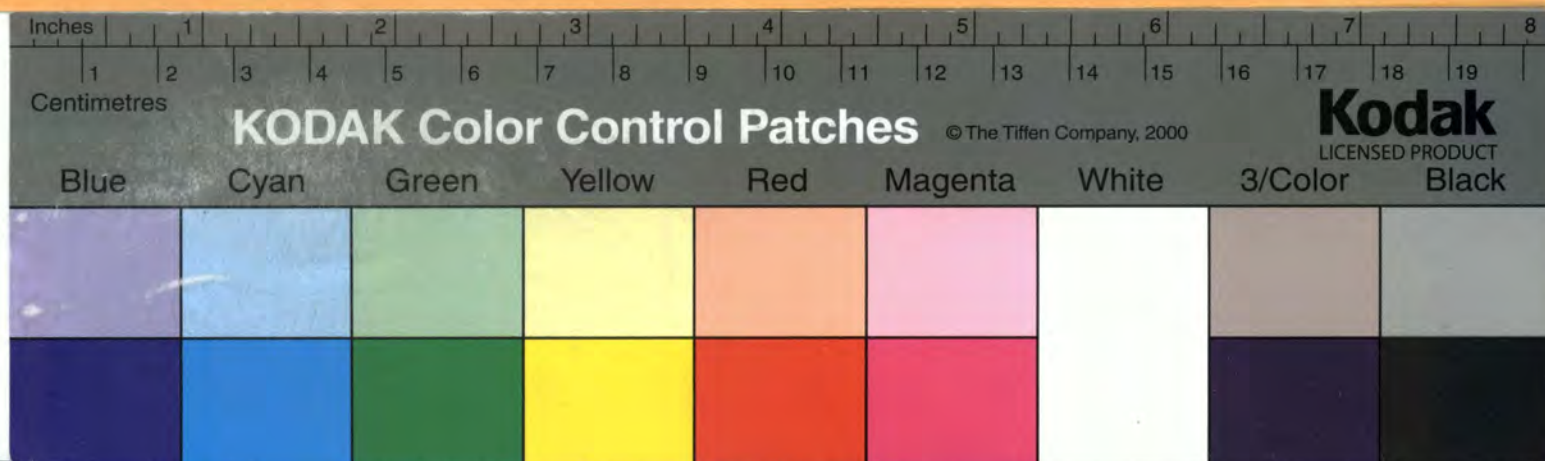
523-ET-58 The Blue Nile Falls at Bahar-Dar, Ethiopia, where the tourist trade is increasing as the result of a good road connecting Bahar-Dar with the North and the South of the country.

WORLD BANK and IDA funds are assisting a highway development program in Ethiopia.

Photo: Kay Muldoon for WORLD BANK GROUP. Nov. 1969

D-111-ET-59

523-ET-59



INTERNATIONAL BANK FOR RECONSTRUCTION AND DEVELOPMENT
INTERNATIONAL DEVELOPMENT ASSOCIATION (IDA)
Washington, D.C. 20433

D-111-ET-59

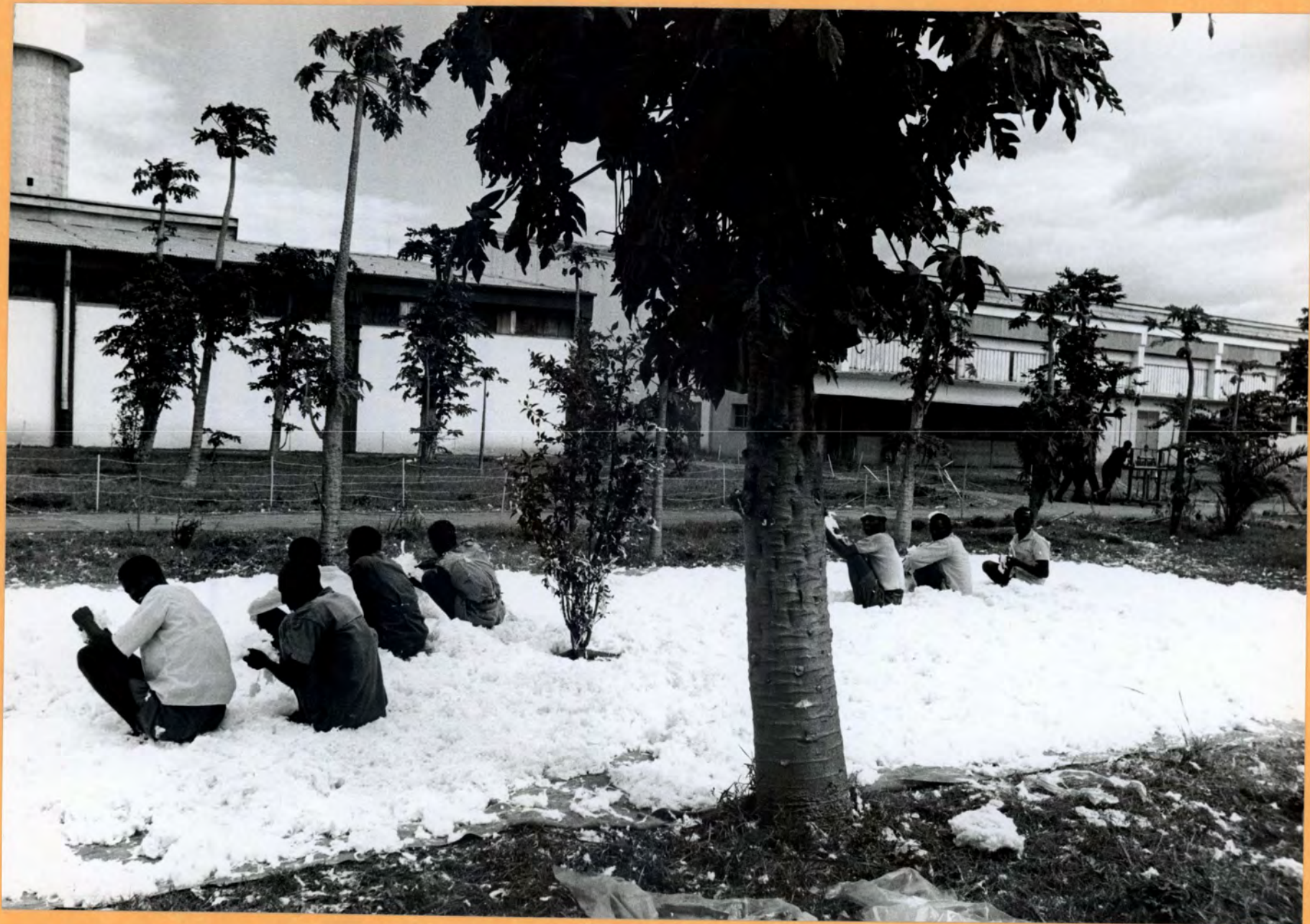
523-ET-59 A hydroelectric plant at Bahar-Dar is one of the results of the growth of the town due to the new road connecting Bahar-Dar with the North and the South of the country.

WORLD BANK and IDA funds are assisting a highway development program in Ethiopia.

Photo: Kay Muldoon for WORLD BANK GROUP. Nov. 1969

D-III-ET-60

523-ET-60



**INTERNATIONAL BANK FOR RECONSTRUCTION AND DEVELOPMENT
INTERNATIONAL DEVELOPMENT ASSOCIATION (IDA)
Washington, D.C. 20433**

D-111-ET-60

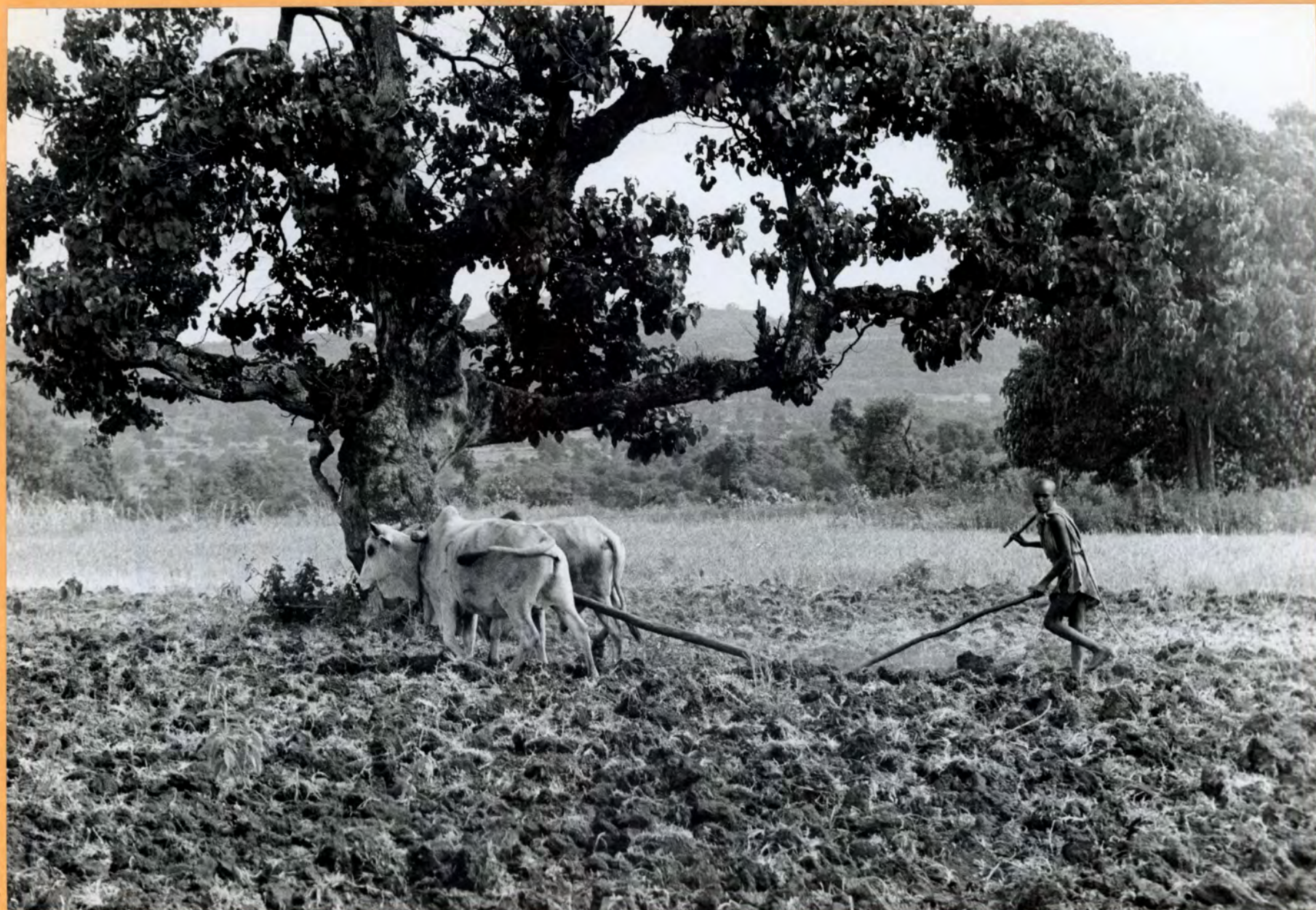
523-ET-60 Men drying staple outside the Bahar-Dar textile factory in Ethiopia. The finished project is trucked to Asmara, a two day trip on the improved road.

WORLD BANK and IDA funds are assisting a highway development program in Ethiopia which concentrates mainly on roads which will assist the development of agriculture.

Photo: Kay Muldoon for WORLD BANK GROUP. Nov. 1969

2-III-ET-61

S'23-ET-61



INTERNATIONAL BANK FOR RECONSTRUCTION AND DEVELOPMENT
INTERNATIONAL DEVELOPMENT ASSOCIATION (IDA)
Washington, D.C. 20433

D-111-ET-61

523-ET-61 Plowing in a field along the road going
North from Baher-Der in Ethiopia.

WORLD BANK and IDA funds are assisting a
highway development program in Ethiopia which
concentrates mainly on roads which will assist the
development of agriculture.

Photo: Kay Muldoon for WORLD BANK GROUP. Nov. 1969

D-III-ET-62

523-ET-62



INTERNATIONAL BANK FOR RECONSTRUCTION AND DEVELOPMENT
INTERNATIONAL DEVELOPMENT ASSOCIATION (IDA)
Washington, D.C. 20433

D-111-ET-62

523-ET-62 The police station at Hamusit, along the road going North from Bahar-Dar, Ethiopia.

WORLD BANK and IDA funds are assisting a highway development program in Ethiopia which concentrates mainly on roads which will assist the development of agriculture.

Photo: Key Muldeon for WORLD BANK GROUP. Nov. 1969

D-111-ET-63

523-ET-63



**INTERNATIONAL BANK FOR RECONSTRUCTION AND DEVELOPMENT
INTERNATIONAL DEVELOPMENT ASSOCIATION (IDA)
Washington, D.C. 20433**

D-111-ET-63

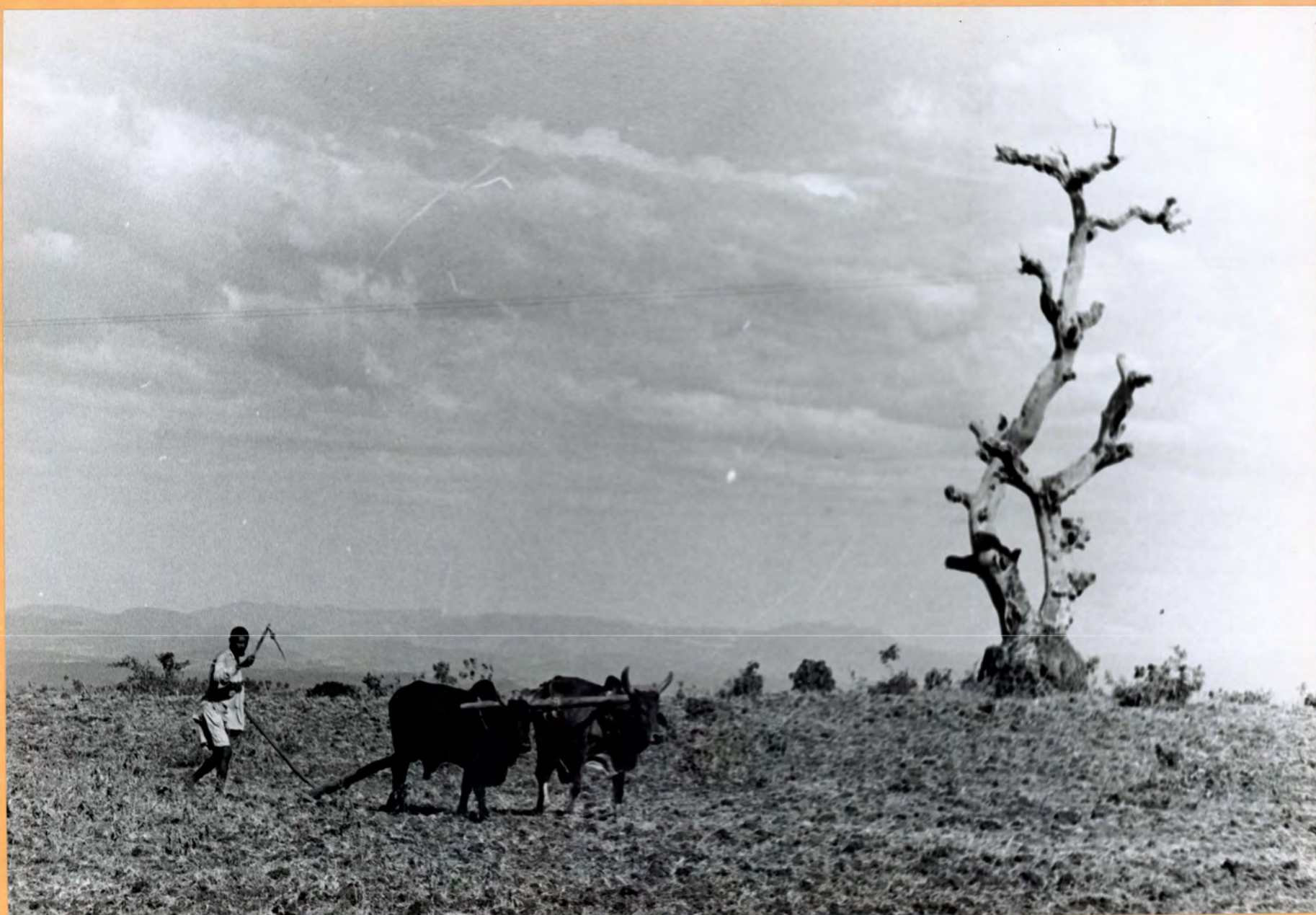
523-ET-63 The bus stop at Hamusit, along the road
going North from Bahar-Dar, Ethiopia.

WORLD BANK and IDA funds are assisting a
highway development program in Ethiopia which
concentrates mainly on roads which will assist the
development of agriculture.

Photo: Kay Muldoon for WORLD BANK GROUP. Nov. 1969

D-111-ET-64

523-ET-64



INTERNATIONAL BANK FOR RECONSTRUCTION AND DEVELOPMENT
INTERNATIONAL DEVELOPMENT ASSOCIATION (IDA)
Washington, D.C. 20433

D-111-ET-64

523-ET-64 A farmer plowing his land along the road
going north from Bahar-Dar in Ethiopia.

WORLD BANK and IDA funds are assisting a
highway development program in Ethiopia which
concentrates mainly on roads which will assist the
development of agriculture.

Photo: Kay Muldoon for WORLD BANK GROUP. Nov. 1969

D.III.ET-65

S23-ET-65



INTERNATIONAL BANK FOR RECONSTRUCTION AND DEVELOPMENT
INTERNATIONAL DEVELOPMENT ASSOCIATION (IDA)
Washington, D.C., 20433

D-111-ET-65

523-ET-65 Our photographer's transportation, a jeep,
stops to fix a flat tire outside the town of Hamusit
on an WORLD BANK-financed stretch of road.

Photo: Kay Muldoon for WORLD BANK GROUP, Nov. 1969

D-111-ET-66

523-ET-66



INTERNATIONAL BANK FOR RECONSTRUCTION AND DEVELOPMENT
INTERNATIONAL DEVELOPMENT ASSOCIATION (IDA)
Washington, D.C., 20433

D-111-ET-66

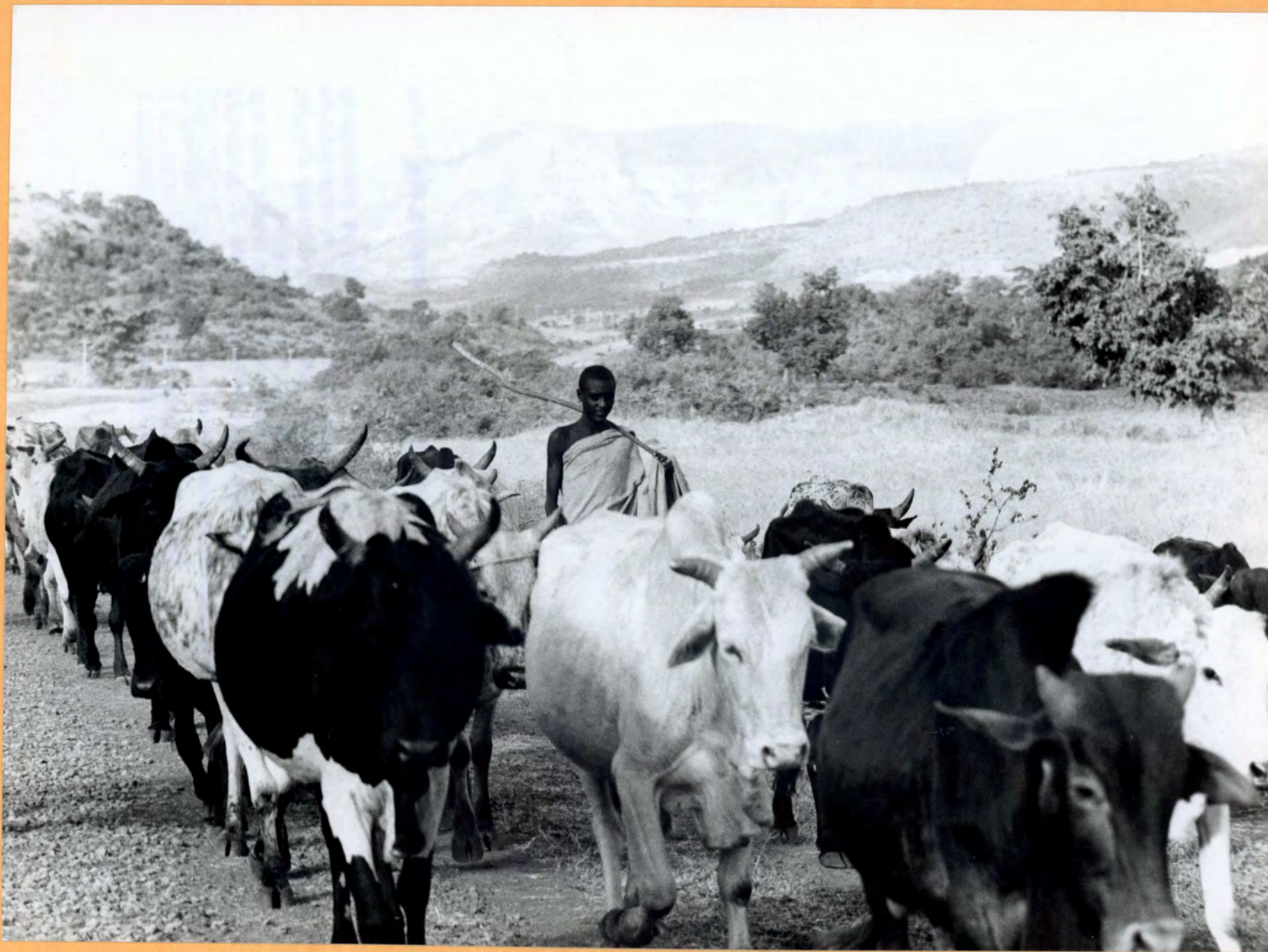
523-ET-66 A road grader at work on the highway outside the town of Woreta in Ethiopia.

WORLD BANK And IDA funds are assisting a highway development program in Ethiopia which concentrates mainly on roads which will assist the development of agriculture.

Photo: Kay Muldoon for WORLDBANK GROUP. Nov. 1969

Q-III-ET-67

523-ET-67



INTERNATIONAL BANK FOR RECONSTRUCTION AND DEVELOPMENT
INTERNATIONAL DEVELOPMENT ASSOCIATION (IDA)
Washington, D.C. 20433

D-111-ET-67

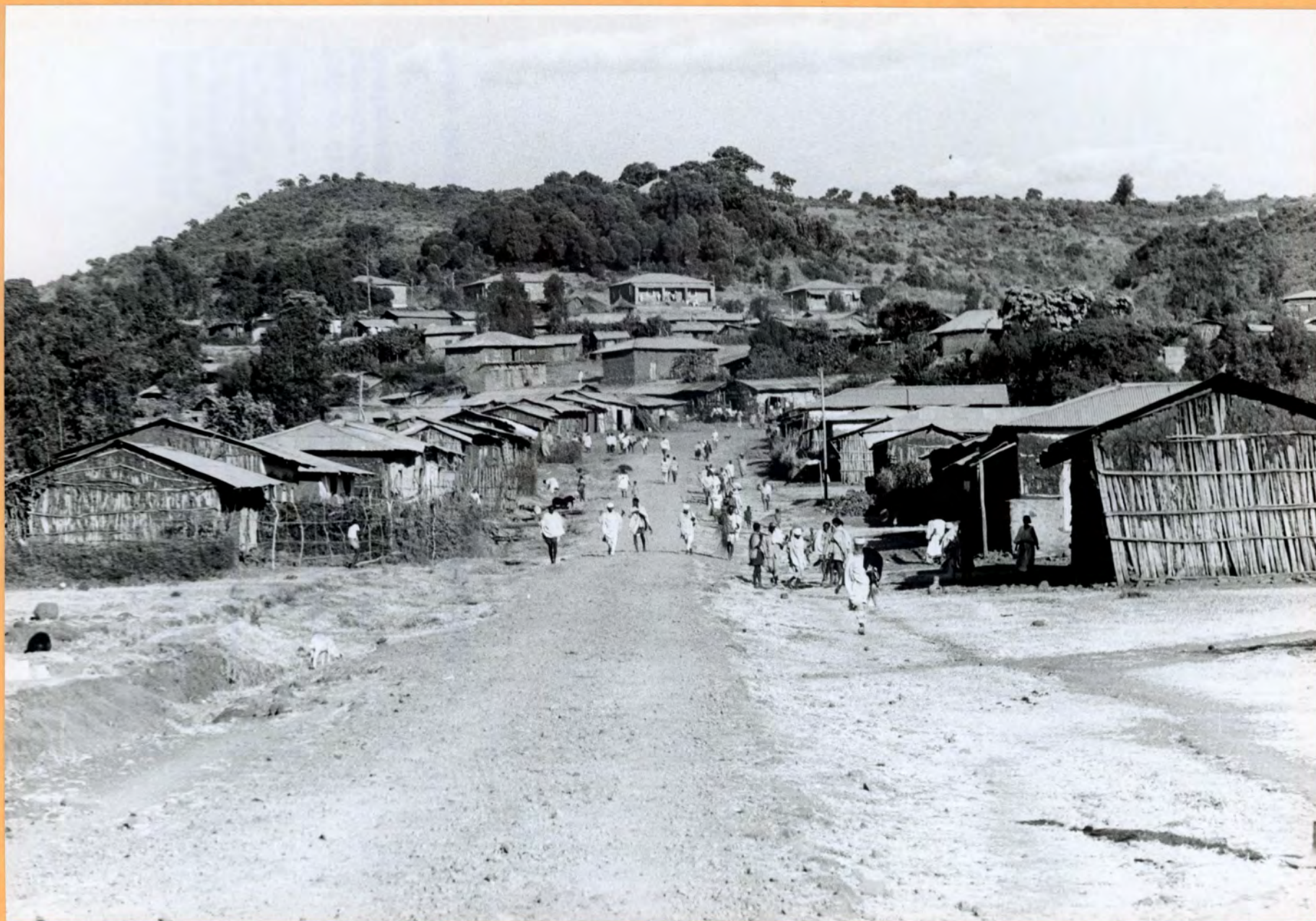
523-ET-67 A young Ethiopian herds his cattle along
the road approaching Addis Zemen.

WORLD BANK and IDA funds are assisting a
highway development program in Ethiopia which
concentrates mainly on roads which will assist the
development of agriculture.

Photo: Kay Muldoon for WORLD BANK GROUP. Nov. 1969

D-111-ET-68

523-ET-68



INTERNATIONAL BANK FOR RECONSTRUCTION AND DEVELOPMENT
INTERNATIONAL DEVELOPMENT ASSOCIATION (IDA)
Washington, D.C. 20433

D-111-ET-68

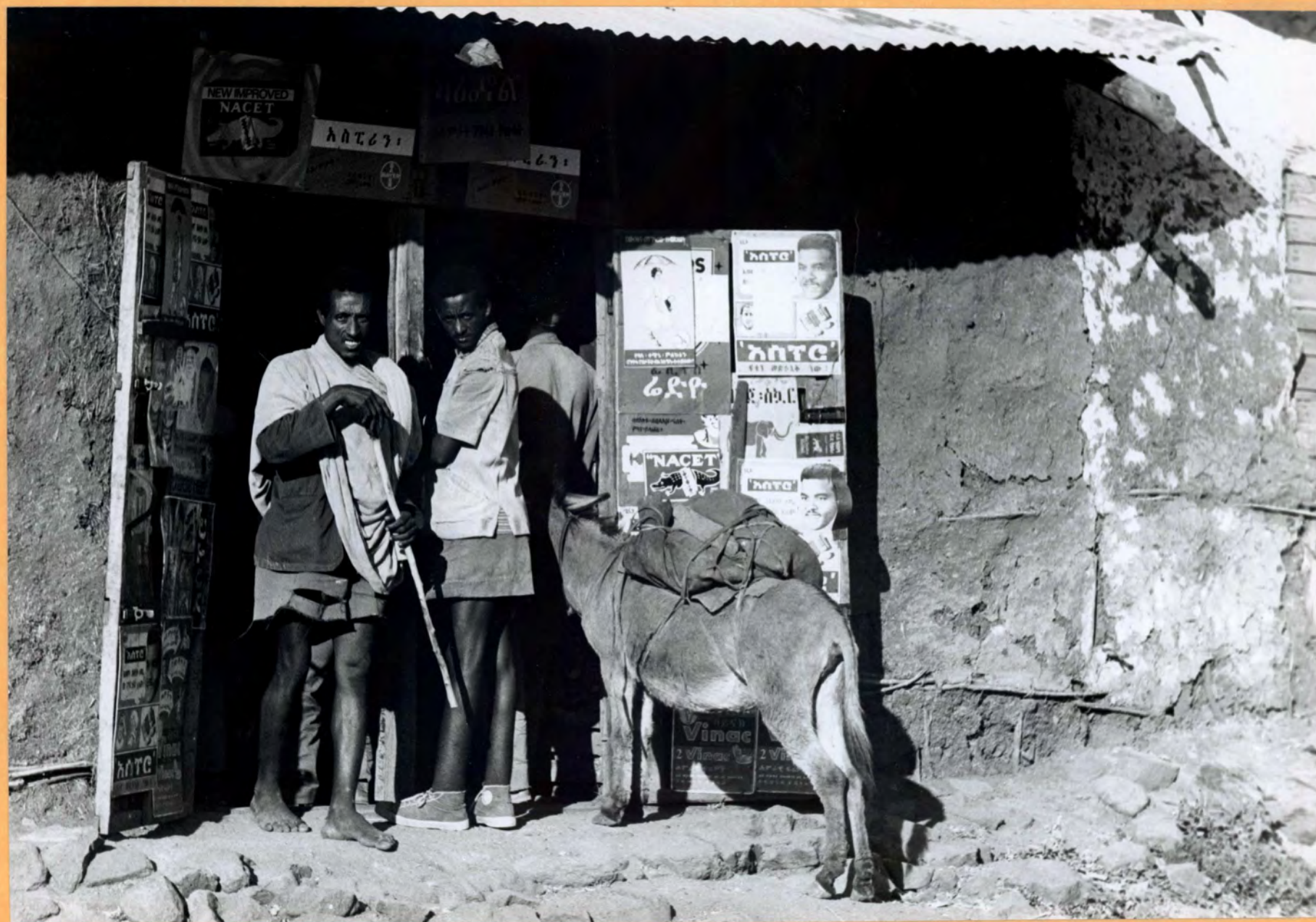
523-ET-68 Approaching the town of Adis Zeman in
Ethiopia.

WORLD BANK and IDA funds are assisting a
highway development program in Ethiopia which
concentrates mainly on roads which will assist the
development of agriculture.

Photo: Kay Muldoon for WORLD BANK GROUP. Nov. 1969

D-111-ET-69

S23-ET-69



**INTERNATIONAL BANK FOR RECONSTRUCTION AND DEVELOPMENT
INTERNATIONAL DEVELOPMENT ASSOCIATION (IDA)
Washington, D.C. 20433**

D-111-ET-69

**523-ET-69 Ato Mahsin's dry goods shop at Adis Seman,
a boom town along the new highway in Ethiopia.**

**WORLD BANK and IDA funds are assisting a
highway development program in Ethiopia which
concentrates mainly on roads which will assist the
development of agriculture.**

Photo: Kay Muldoon for WORLD BANK GROUP. Nov. 1969

Q. III. ET. 70

523-ET-70



INTERNATIONAL BANK FOR RECONSTRUCTION AND DEVELOPMENT
INTERNATIONAL DEVELOPMENT ASSOCIATION (IDA)
Washington, D.C. 20433

D-111-ET-70

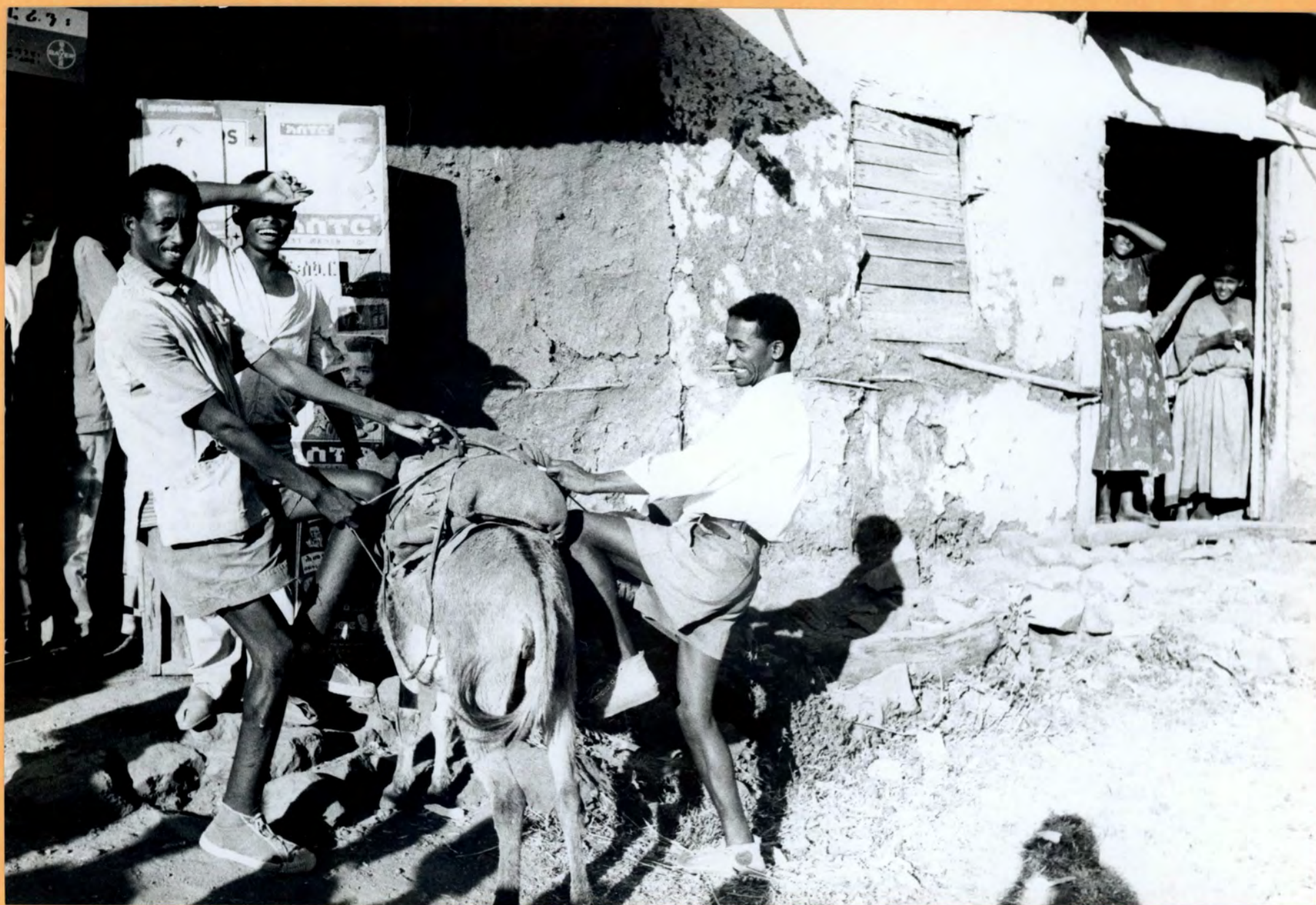
523-ET-70 Ato Mehsin in his dry goods shop at Adis Zemen, a town in Ethiopia which is now booming as a result of the new highway.

WORLD BANK and IDA funds are assisting a highway development program in Ethiopia which concentrates mainly on roads which will assist the development of agriculture.

Photo: Kay Maldoon for WORLD BANK GROUP. Nov. 1969

D-111-ET-71

523-ET-71



INTERNATIONAL BANK FOR RECONSTRUCTION AND DEVELOPMENT
INTERNATIONAL DEVELOPMENT ASSOCIATION (IDA)
Washington, D.C. 20433

D-111-ET-71

523-ET-71 In front of Ato Mehsin's dry goods shop at
Adis Zemen, a town in Ethiopia which is now booming as
a result of the new highway.

WORLD BANK and IDA funds are assisting a
highway development program in Ethiopia which
concentrates mainly on roads which will assist the
development of agriculture.

Photo: Kay Muldoon for WORLD BANK GROUP. Nov. 1969

D. III- ET- 72

S23-ET- 72



**INTERNATIONAL BANK FOR RECONSTRUCTION AND DEVELOPMENT
INTERNATIONAL DEVELOPMENT ASSOCIATION (IDA)
Washington, D.C. 20433**

D-111-ET-72

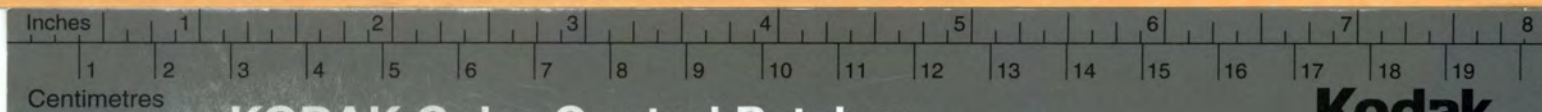
**523-ET-72 The Tara Gedam Hotel in Adis Zeman, Ethiopia.
This hotel was build in 1965 shortly after the improved
road started to bring some traffic through town.**

**WORLD BANK and IDA funds are assisting a
highway development program in Ethiopia which
concentrates mainly on roads which will assist the
development of agriculture.**

Photo: Kay Muldoon for WORLD BANK GROUP. Nov. 1969

D-III-ET-73

S23-ET-73



Centimetres

KODAK Color Control Patches

© The Tiffen Company, 2000

Kodak

LICENSED PRODUCT

Blue

Cyan

Green

Yellow

Red

Magenta

White

3/Color

Black



INTERNATIONAL BANK FOR RECONSTRUCTION AND DEVELOPMENT
INTERNATIONAL DEVELOPMENT ASSOCIATION (IDA)
Washington, D.C. 20433

D-111-ET-73

523-ET-73 A bar inside the Tera Gedam Hotel in Adis Zemen, Ethiopia. This hotel was built in 1965 shortly after the improved road started to bring some traffic through town.

WORLD BANK and IDA funds are assisting a highway development program in Ethiopia which concentrates mainly on roads which will assist the development of agriculture.

Photo: Kay Muldoon for WORLD BANK GROUP. Nov. 1969

D-111-ET-74

523-ET-74



INTERNATIONAL BANK FOR RECONSTRUCTION AND DEVELOPMENT
INTERNATIONAL DEVELOPMENT ASSOCIATION (IDA)
Washington, D.C. 20433

D-111-ET-74

523-ET-74 A stone quarry outside of Yebu where stone will be quarried for use in asphaltting the Jimma-Agare road in Ethiopia.

Sweden, the WORLD BANK and IDA are jointly financing a four-year highway development program in Ethiopia which concentrates mainly on roads which will assist the development of agriculture.

Photo: Kay Maldoon for WORLD BANK GROUP. Nov. 1969

INTERNATIONAL BANK FOR RECONSTRUCTION AND DEVELOPMENT
INTERNATIONAL DEVELOPMENT ASSOCIATION (IDA)
Washington, D.C. 20433

D-111-ET-75

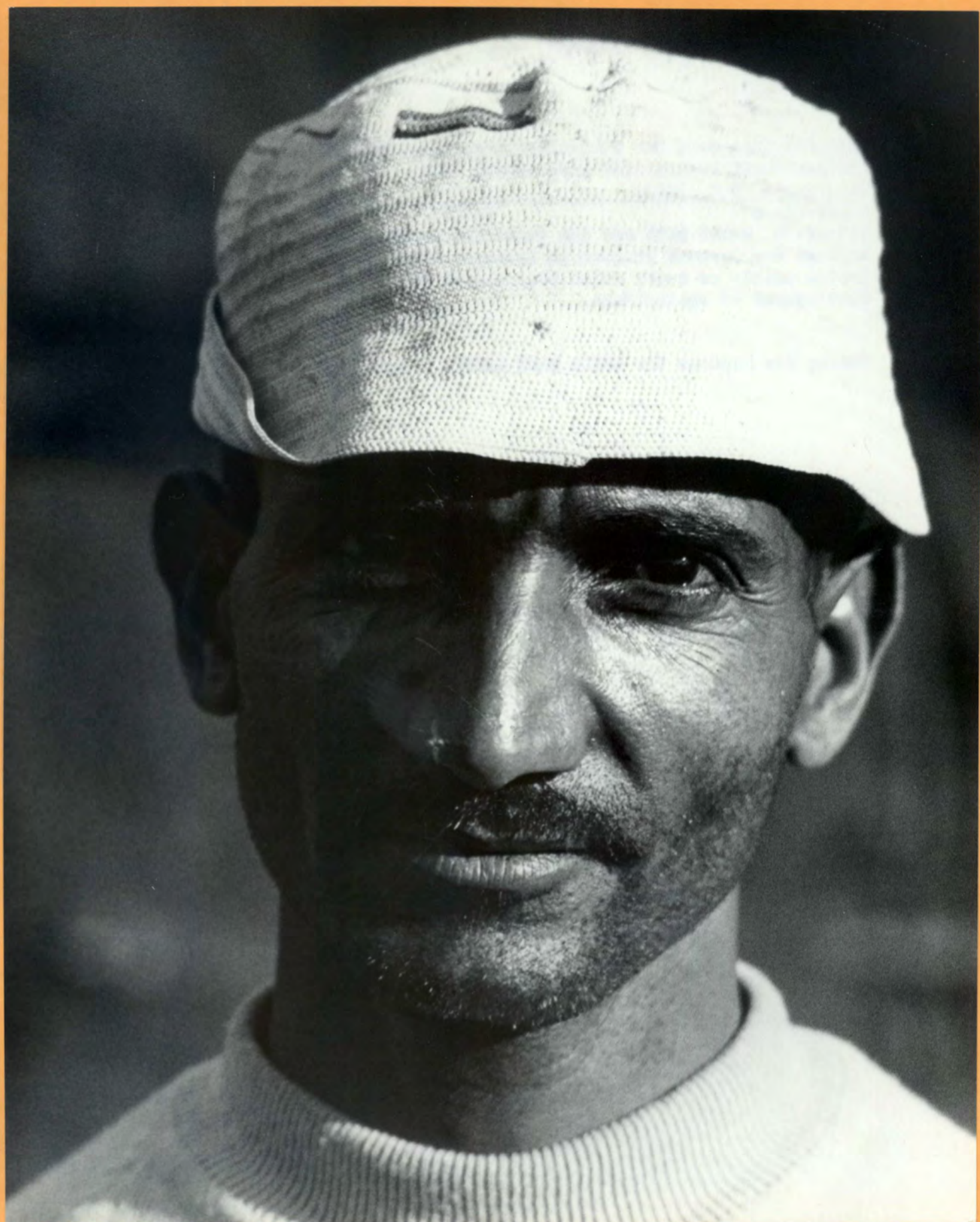
523-ET-75 A clothing shop outside the town of Mieso
in Ethiopia.

WORLD BANK and IDA funds are assisting a
highway development program in Ethiopia which concen-
trates mainly on roads which will assist the
development of agriculture.

Photo: Kay Muldoon for WORLD BANK GROUP. Nov. 1969

523 - ET - 76

D - 111 - ET - 76



Inches 1 2 3 4 5 6 7 8
Centimetres 1 2 3 4 5 6 7 8 9 10 11 12 13 14 15 16 17 18 19

KODAK Color Control Patches © The Tiffen Company, 2000

Blue Cyan Green Yellow Red Magenta White 3/Color Black

Kodak
LICENSED PRODUCT

INTERNATIONAL BANK FOR RECONSTRUCTION AND DEVELOPMENT
INTERNATIONAL DEVELOPMENT ASSOCIATION (IDA)
Washington, D.C. 20433

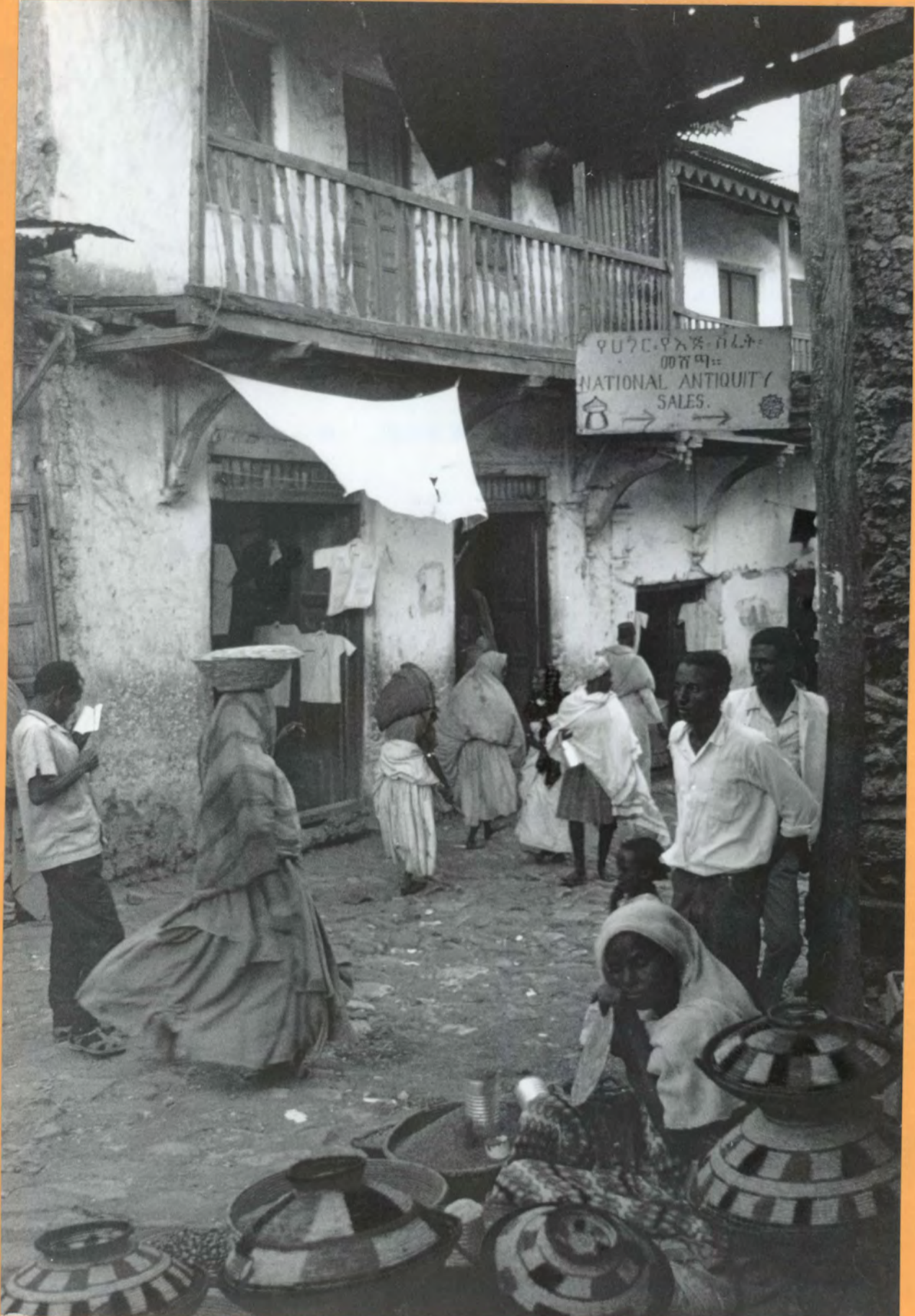
D-111-ET-76

523-ET-76 WORLD BANK and IDA funds are assisting a highway development program in Ethiopia which concentrates mainly on roads which will assist the development of agriculture.

Photo: Kay Muldoon for WORLD BANK GROUP. Nov. 1969

523-ET-77

D-111-ET-77



Inches 1 2 3 4 5 6 7 8

Centimetres 1 2 3 4 5 6 7 8 9 10 11 12 13 14 15 16 17 18 19

KODAK Color Control Patches © The Tiffen Company, 2000

Kodak
LICENSED PRODUCT

Blue	Cyan	Green	Yellow	Red	Magenta	White	3/Color	Black

INTERNATIONAL BANK FOR RECONSTRUCTION AND DEVELOPMENT
INTERNATIONAL DEVELOPMENT ASSOCIATION (IDA)
Washington, D.C. 20433

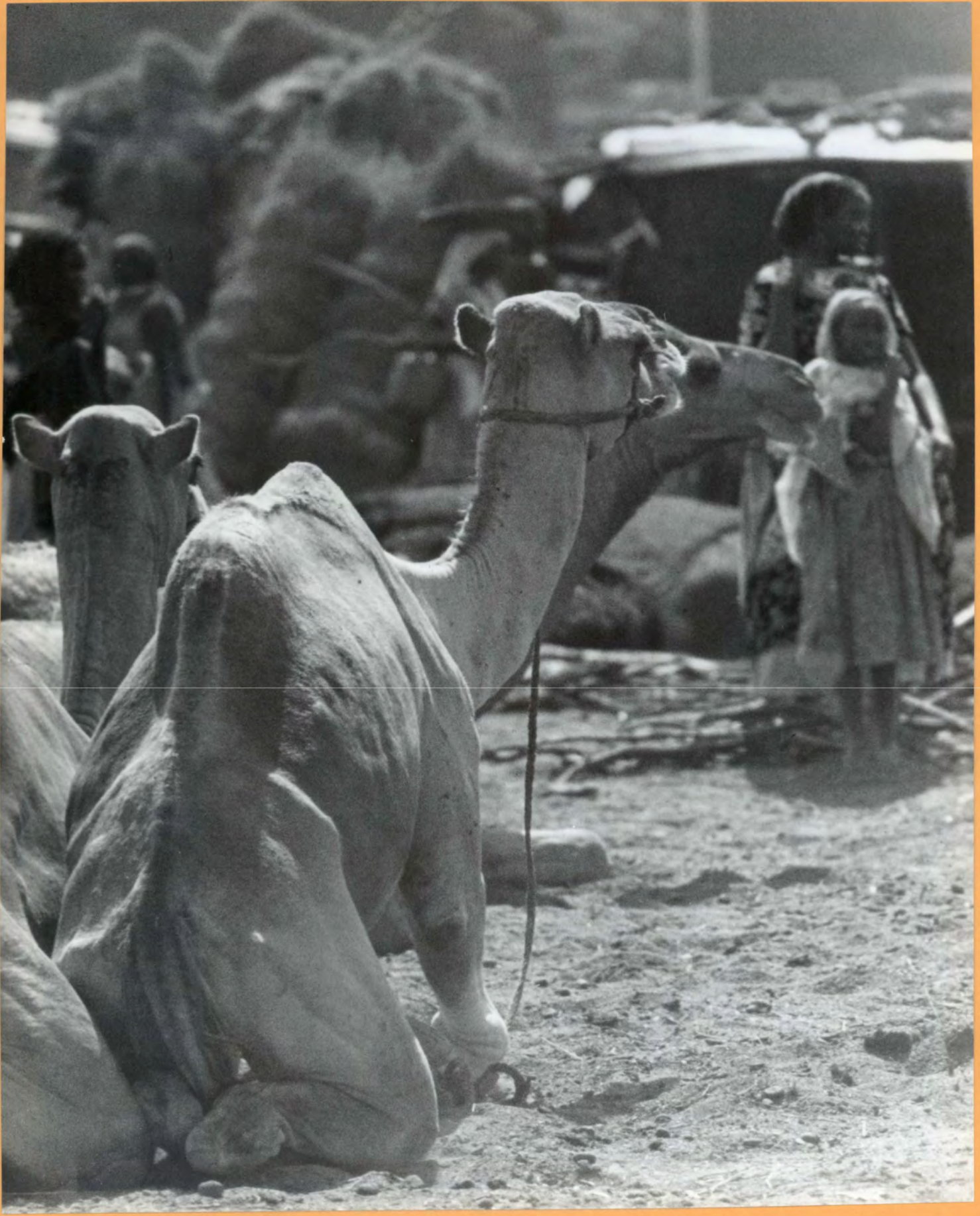
D-111-ET-77

523-ET-77 The picturesque town of Harar is situated at the end of a road financed by the WORLD BANK GROUP. It is becoming one of the tourist attractions of Ethiopia. The people are of the Adere tribe and produce beautiful handicraft work such as the baskets in the picture much sought after by tourists.

Photo: Kay Muldoon for WORLD BANK GROUP. Nov. 1969

523-ET-78

D-III-ET-78



Inches 1 2 3 4 5 6 7 8
Centimetres 1 2 3 4 5 6 7 8 9 10 11 12 13 14 15 16 17 18 19

KODAK Color Control Patches © The Tiffen Company, 2000

Blue Cyan Green Yellow Red Magenta White 3/Color Black

INTERNATIONAL BANK FOR RECONSTRUCTION AND DEVELOPMENT
INTERNATIONAL DEVELOPMENT ASSOCIATION (IDA)
Washington, D.C. 20433

D-111-ET-78

523-ET-78 The market place in the old part of Dire
Dawa, a very important industrial area in Ethiopia.

WORLD BANK and IDA funds are assisting a
highway development program in Ethiopia which
concentrates mainly on roads which will assist the
development of agriculture.

Photo: Kay Muldoon for WORLD BANK GROUP. Nov. 1969

D-111-ET-79
F-88-ET-1

523-ET-79



Inches 1 2 3 4 5 6 7 8
Centimetres 1 2 3 4 5 6 7 8 9 10 11 12 13 14 15 16 17 18 19

KODAK Color Control Patches © The Tiffen Company, 2000

Blue Cyan Green Yellow Red Magenta White 3/Color Black

Blue	Cyan	Green	Yellow	Red	Magenta	White	3/Color	Black
Blue	Cyan	Green	Yellow	Red	Magenta	White	3/Color	Black

INTERNATIONAL BANK FOR RECONSTRUCTION AND DEVELOPMENT
INTERNATIONAL FINANCE CORPORATION (IFC)
INTERNATIONAL DEVELOPMENT ASSOCIATION (IDA)
Washington, D.C. 20433

D-111-ET-79

F-88-ET-1

523-ET-79 The textile factory in Dire Dawa, a very important industrial area in Ethiopia. All of its products are trucked along the new road which was built with the aid of WORLD BANK and IDA funds. IFC funds helped expand this textile mill.

Photo: Kay Muldoon for WORLD BANK GROUP. Nov. 1969

D-III-ET-80

523-ET-80

UN 115,538



WORLD BANK AIDS ETHIOPIA IN IMPROVING HIGHWAY NETWORK

UN 115,538

ETHIOPIA, 1969

The Government of Ethiopia, with the assistance of the International Bank for Reconstruction and Development (IBRD), in 1950 established the Imperial Highway Authority which is responsible for developing and maintaining Ethiopia's highways. Since 1950, as a result of this cooperation, the highway network has been trebled in length and there are now 4,000 miles of all-weather roads, mainly primary roads radiating from Addis Ababa. However, few secondary links connecting these radial roads exist; development of feeder roads is just beginning. One of the roads to be built will serve the Middle Awash Valley which is well-suited to the development of modern agriculture. The other will run from Bedelle to Gore in the southwest, opening a region of fertile soil and good rainfall to agricultural development.

Two roads to be surfaced in the programme are the roads from Nazreth to Awash and from Jimma to Agaro. Seen here is the winding improved road between Jimma and Woliso.

Photo: UNITED NATIONS

Muldoon/jr

1969

Photo: Kay Muldoon for UNITED NATIONS

development of agriculture.
concentrates mainly on roads which will assist the
highway development program in Ethiopia which
523-ET-80 WORLD BANK and IDA funds are assisting a

D-111-ET-80

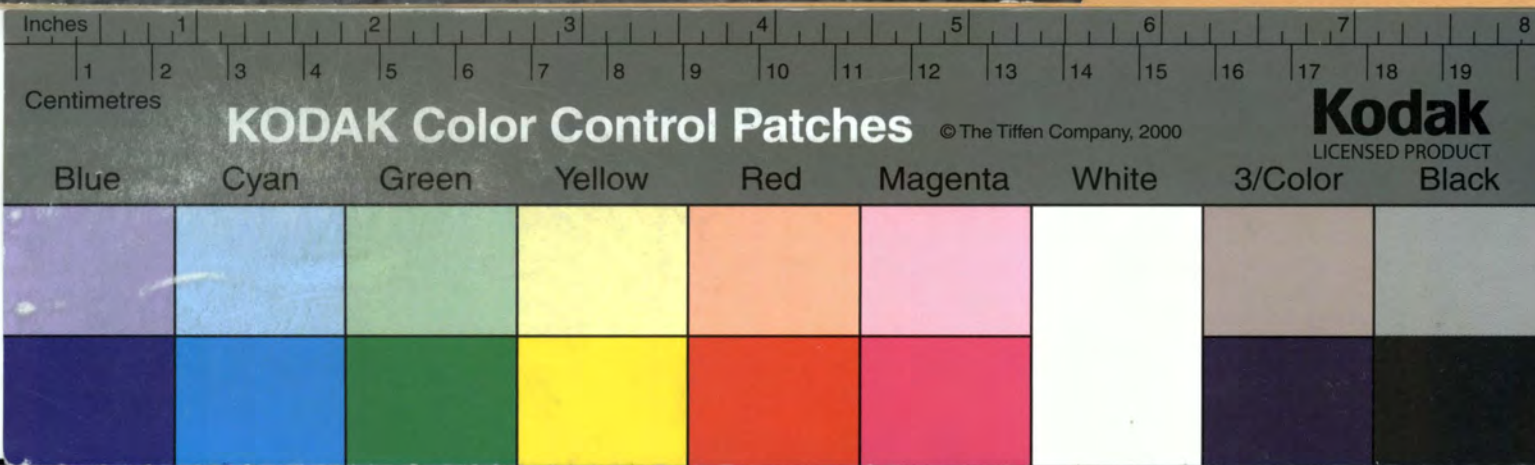
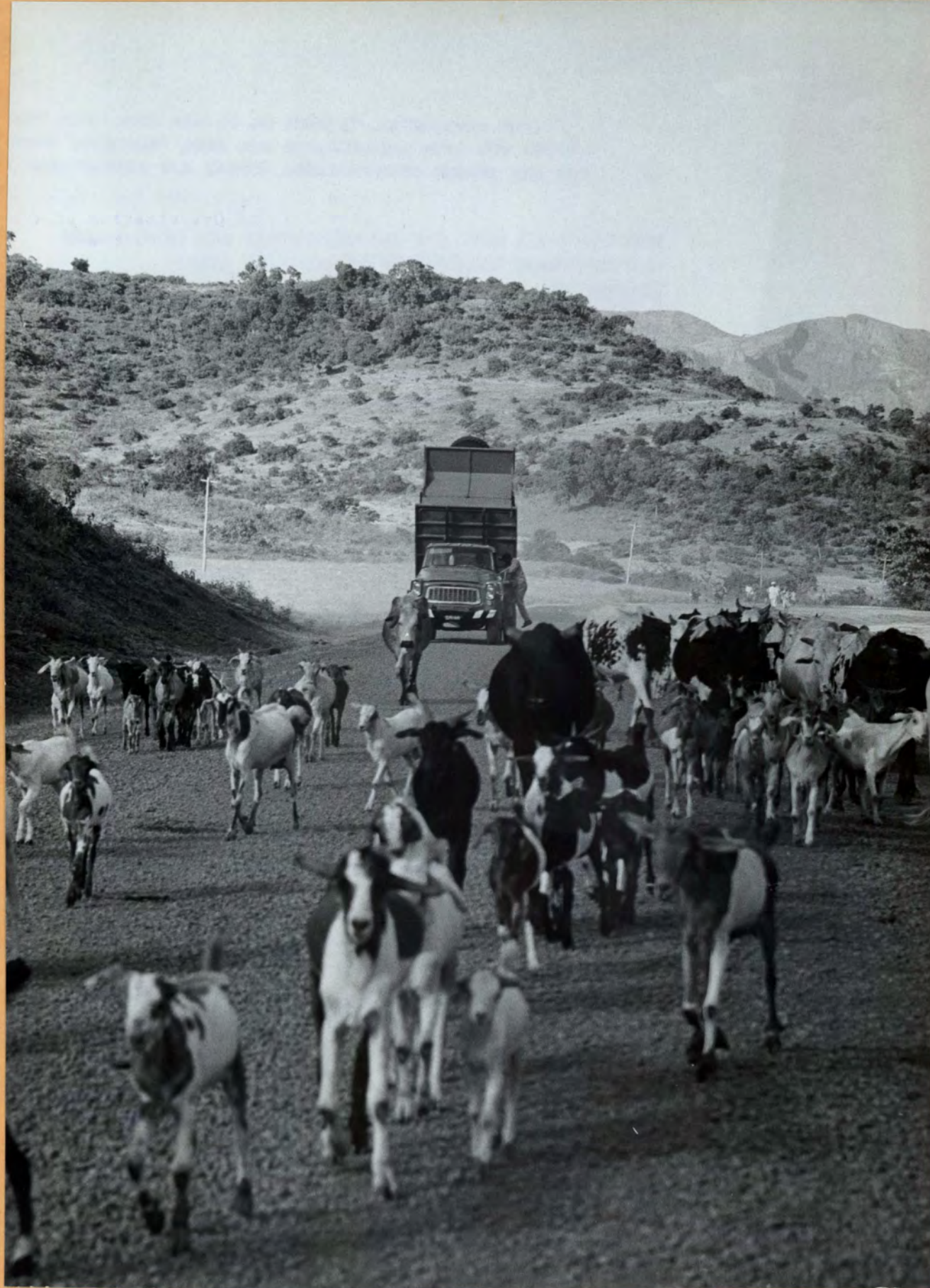
Washington, D.C. 20433

INTERNATIONAL BANK FOR RECONSTRUCTION AND DEVELOPMENT
INTERNATIONAL DEVELOPMENT ASSOCIATION (IDA)

D-III-ET-81

UN 115,539

523-ET-81



WORLD BANK AIDS ETHIOPIA IN IMPROVING HIGHWAY NETWORK

UN 115,539

ETHIOPIA, 1969

The Government of Ethiopia, with the assistance of the International Bank for Reconstruction and Development (IBRD), in 1950 established the Imperial Highway Authority which is responsible for developing and maintaining Ethiopia's highways. Since 1950, as a result of this cooperation, the highway network has been trebled in length and there are now 4,000 miles of all-weather roads, mainly primary roads radiating from Addis Ababa. There are, however, few secondary links connecting these radial roads; development of feeder roads is just beginning. One of the roads to be built will serve Middle Awash Valley which is well-suited to the development of modern agriculture. The other will run from Bedelle to Gore in the southwest, opening a region of fertile soil and good rainfall to agricultural development.

Road work in progress on the road approaching Adis Zeman.

Photo: UNITED NATIONS

Muldoon/jr

Photo: Kay Muldoon for UNITED NATIONS 1969

development of agriculture.
concentrates mainly on roads which will assist the
highway development program in Ethiopia which
523-ET-81 WORLD BANK and IDA funds are assisting a

D-111-ET-81

Washington, D.C. 20433

INTERNATIONAL BANK FOR RECONSTRUCTION AND DEVELOPMENT
INTERNATIONAL DEVELOPMENT ASSOCIATION (IDA)