



MARCH 2017

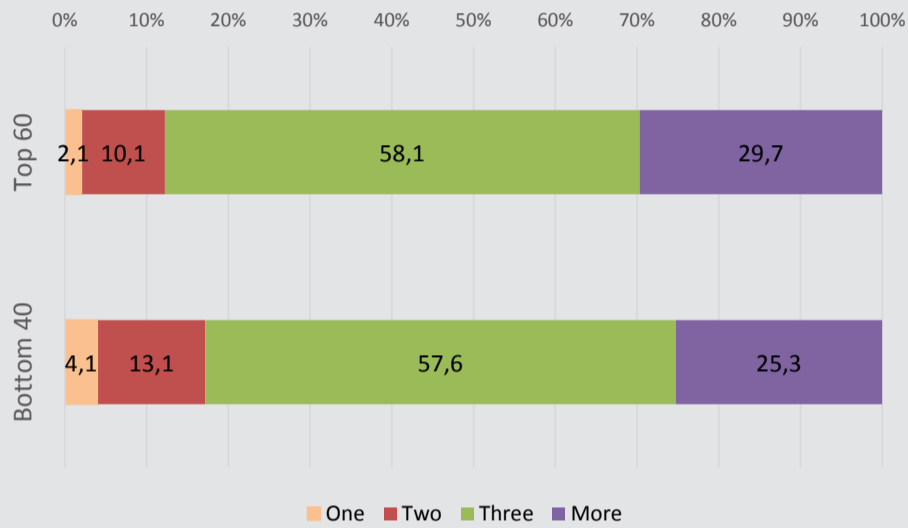
LISTENING TO TAJIKISTAN Children

HH Reports Inability to Provide Enough Food for Children	19%	L2TJK
HH Reports a Child Has Fallen Ill Over Past 10 days	40%	L2TJK
HH Reports Inability to Provide Medical Care for Children	15%	L2TJK
HH Reports a Child Has Missed School for Financial Reasons	4%	L2TJK
HH Reports a Child Worked for Income Outside of the Home	3%	L2TJK
HH Reports Having Taken in Child From Another HH	5%	L2TJK
HH Reports Having Sent a Child to Another HH	1%	L2TJK

Source: Listening to Tajikistan March 2017

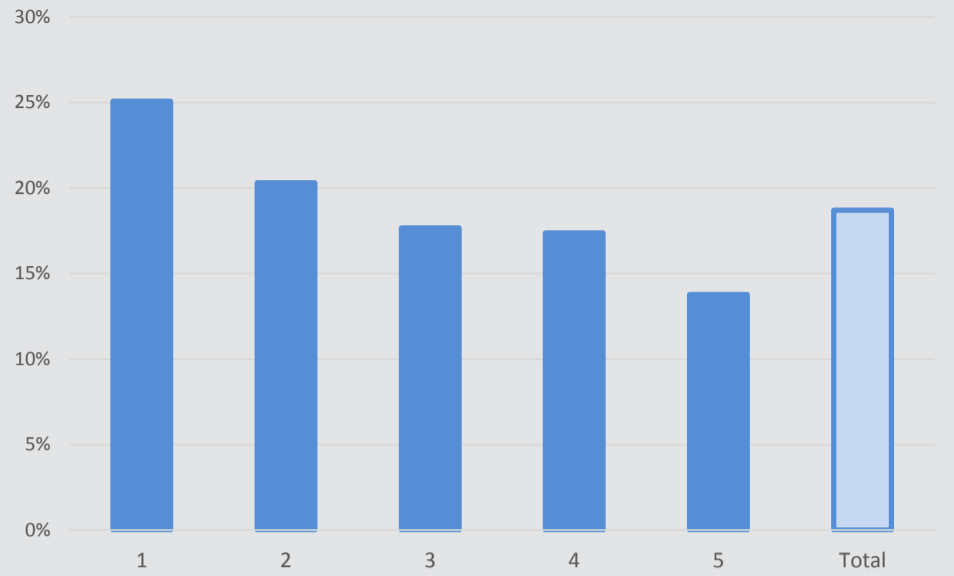
Children's Average Number of Meals Per Day

Source: Listening to Tajikistan.



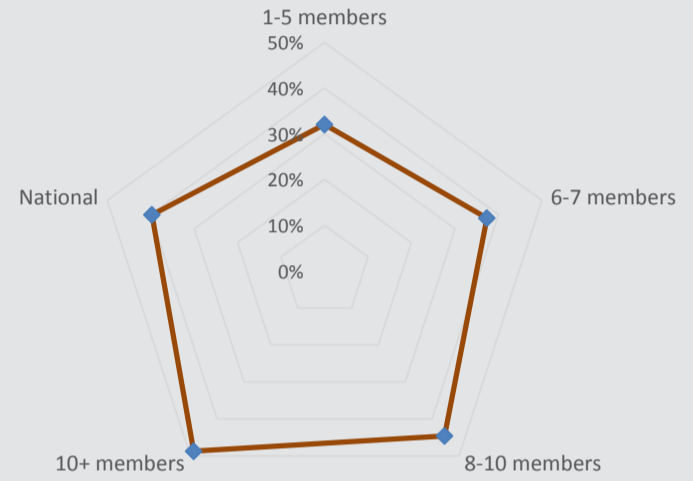
Inability to Provide Enough Food for Children (by Quintile)

Source: Listening to Tajikistan.



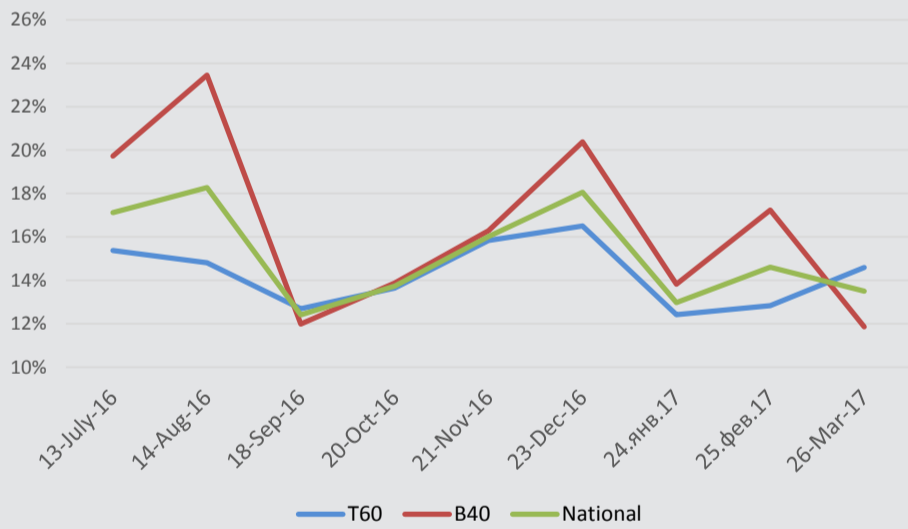
A Child Has Fallen Ill Over Past 10 Days (by HH Size)*

Source: Listening to Tajikistan.



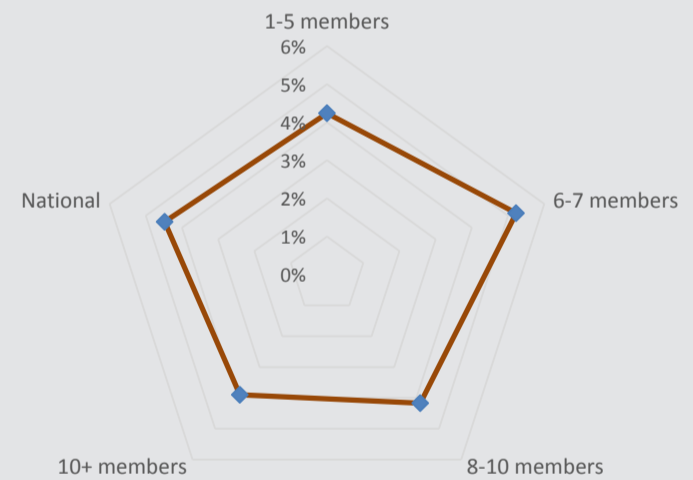
Cannot Afford Medical Care for Child

Source: Listening to Tajikistan.



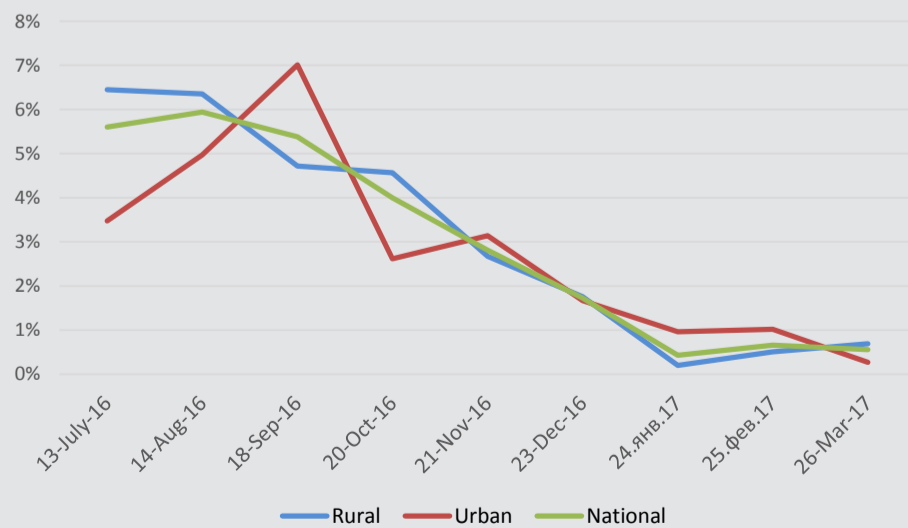
A Child Has Missed School for Financial Reasons (by HH Size)

Source: Listening to Tajikistan.



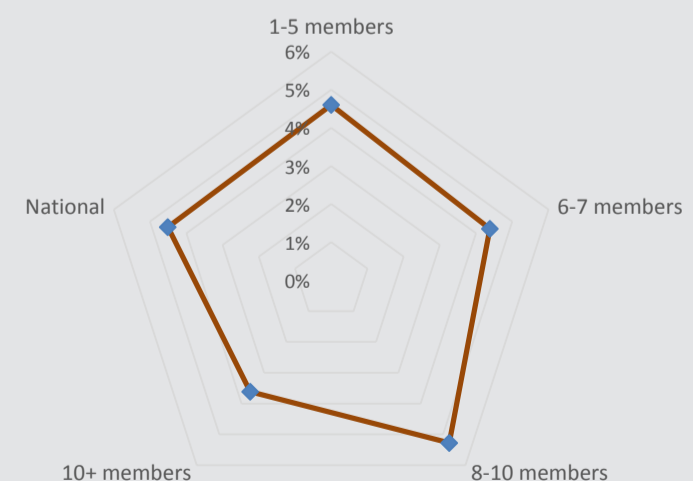
Child Worked Outside Home for Income (by Consumption Quintile)

Source: Listening to Tajikistan.



HH Has Taken in Child from Another HH (by HH Size)

Source: Listening to Tajikistan.



*HH size categories divide population in four similar sized groups

KEY INDICATORS

	1st Consumption Quintile	2nd Consumption Quintile	3rd Consumption Quintile	4th Consumption Quintile	5th Consumption Quintile	National
Lack of Food for Children	25%	20%	18%	17%	14%	19%
Child Has Gotten Ill Over Past 10 days	36%	38%	41%	43%	39%	40%
Cannot Afford Medical Care for Child	14%	18%	16%	16%	12%	15%
Child Missed School for Financial Reasons	4%	5%	4%	5%	4%	4%
Child Worked for Income Outside Home	3%	4%	2%	4%	2%	3%
Received Pension or Social Protection Payment for Child	2%	3%	3%	2%	3%	3%
Taken in Child from Other Family for Care	3%	5%	3%	4%	7%	5%

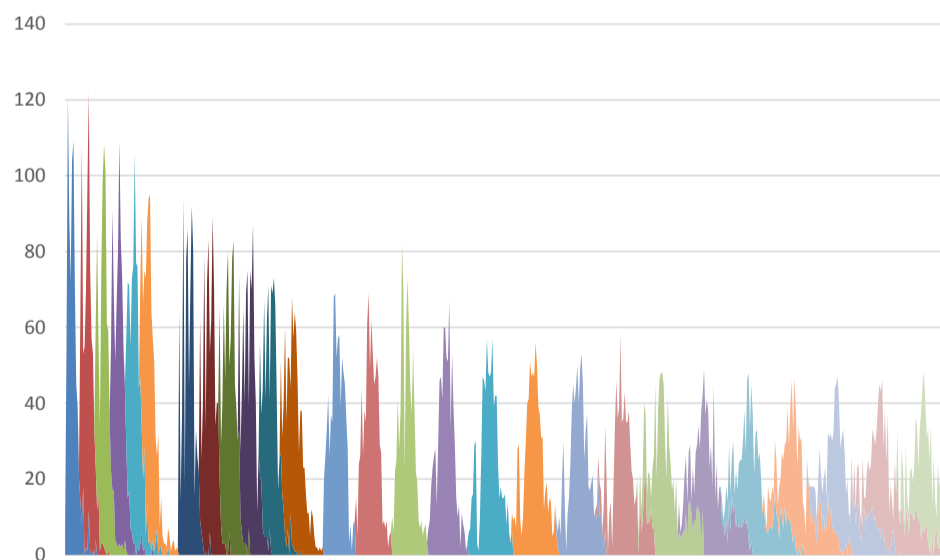
HH Size	1-5	6-7	8-10	10+	National
Lack of Food for Children	19%	18%	21%	16%	19%
Child Has Gotten Ill Over Past 10 days	32%	37%	45%	49%	40%
Cannot Afford Medical Care for Child	14%	13%	18%	17%	15%
Child Missed School for Financial Reasons	4%	5%	4%	4%	4%
Child Worked for Income Outside Home	2%	3%	4%	3%	3%
Received Pension or Social Protection Payment for Child	3%	3%	1%	5%	3%
Taken in Child from Other Family for Care	5%	4%	5%	4%	5%

Source: Listening to Tajikistan

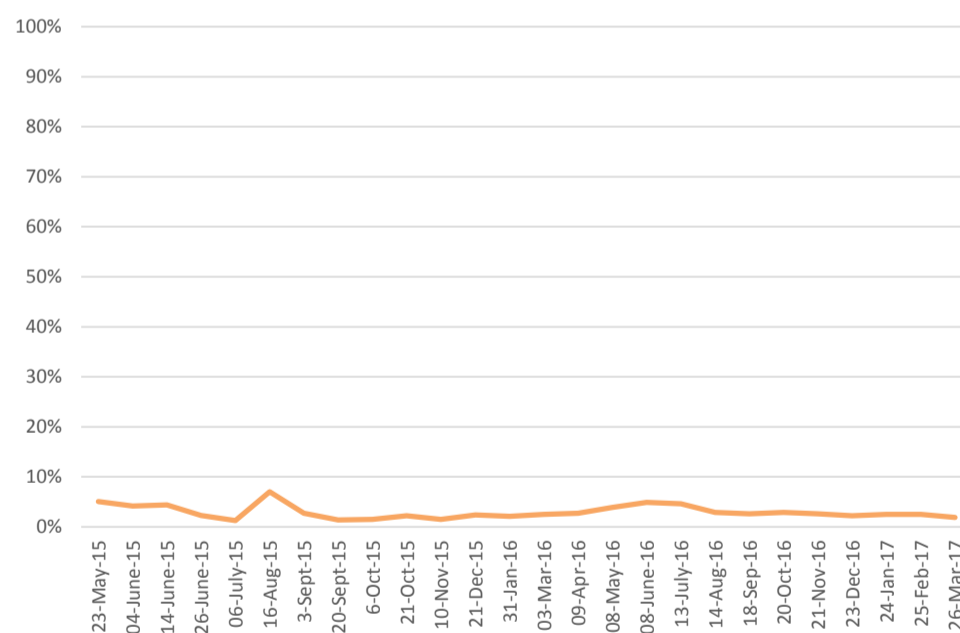
Data Description

The Poverty and Equity team of the World Bank launched the Listening-to-Tajikistan survey in 2015 to monitor the challenges faced by vulnerable households in the country. The survey instrument includes questions on a variety of themes, including income, employment, migration, wellbeing, and services. The sample includes 800 households which were drawn from a nationally representative face-to-face survey conducted in the spring of 2015. Participating households were initially interviewed in 10-day intervals, moving to two-week intervals following the sixth wave of data collection. Responses reported in this note are weighted for national representativeness and for non-response, and households that refused to participate (or otherwise drop out) were replaced with another household from the same primary sampling unit. The B40 and T60 classification for the L2T survey are defined with respect to the baseline round of the survey, and are not updated in each round.

Interviews Completed by Date and Round



Share of Households Replaced by Round



Reference: HH—Households
F2F—Face-to-Face
B40—Bottom 40%

L2TJK—Listening2Tajikistan
T60—Top 60%
Meta—Meta Data



ADDITIONAL INFO

The support of UNICEF in producing this brief is gratefully acknowledged.
Project Webpage: <http://www.worldbank.org/en/country/tajikistan/brief/listening2tajikistan>
QUESTIONS?
Contact Joao Pedro Wagner De Azavedo (jazevedo@worldbank.org), William Hutchins Seitz (wseitz@worldbank.org), Alisher Rajabov (arajabov@worldbank.org)



WORLD BANK GROUP
Poverty & Equity