

THE WORLD BANK GROUP ARCHIVES

PUBLIC DISCLOSURE AUTHORIZED

Folder Title: Country Photographs - El Salvador - Loan 22 - Photographs - Volume 3

Folder ID: 30239316

Fonds: Records of Office of External Affairs (WB IBRD/IDA EXT)

Digitized: October 21, 2014

To cite materials from this archival folder, please follow the following format:
[Descriptive name of item], [Folder Title], Folder ID [Folder ID], World Bank Group Archives, Washington, D.C., United States.

The records in this folder were created or received by The World Bank in the course of its business.

The records that were created by the staff of The World Bank are subject to the Bank's copyright.

Please refer to <http://www.worldbank.org/terms-of-use-earchives> for full copyright terms of use and disclaimers.



THE WORLD BANK
Washington, D.C.

© 2012 International Bank for Reconstruction and Development / International Development Association or
The World Bank
1818 H Street NW
Washington DC 20433
Telephone: 202-473-1000
Internet: www.worldbank.org


PUBLIC DISCLOSURE AUTHORIZED

EL SALVADOR - LN-22

Vol. 3


DECLASSIFIED
WBG Archives

The World Bank Group
Archives



30239316 217385B

R2002-110 Other #: 55
Country Photographs - El Salvador - Loan 22 - Photographs - Volume 3

Publication	Date of Issue	Page Number	Publication	Date of Issue	Page Number
<p><u>INTERNATIONAL BANK FOR RECONSTRUCTION AND DEVELOPMENT</u> <u>Washington, D.C. 20433</u></p> <p>22-ES-34. The Rio Lempa Hydroelectric Project in El Salvador was partly financed by WORLD BANK funds. A large growth in industry was brought about because of the availability of electric power from the Chorrera del Gusyabo. Here, a man operates a Tomotor forklift bearing roofing material at the Fabrica Eureka (Cement-Asbestos Roofing) plant in Ilopango.</p> <p>Photo: Paul Sanche for WORLD BANK. December 1956</p>		<p style="text-align: center;">  </p>			

Withdrawn from Circulation

22-ES-35



Inches 1 2 3 4 5 6 7 8

Centimetres 1 2 3 4 5 6 7 8 9 10 11 12 13 14 15 16 17 18 19

KODAK Color Control Patches © The Tiffen Company, 2000

Kodak
LICENSED PRODUCT

Blue Cyan Green Yellow Red Magenta White 3/Color Black



Withdrawn from circulation

22-45-36



Inches 1 2 3 4 5 6 7 8

Centimetres 1 2 3 4 5 6 7 8 9 10 11 12 13 14 15 16 17 18 19

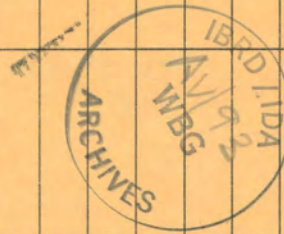
KODAK Color Control Patches © The Tiffen Company, 2000

Kodak
LICENSED PRODUCT

Blue Cyan Green Yellow Red Magenta White 3/Color Black



Publication	Date of Issue	Page Number	Publication	Date of Issue	Page Number
<p><u>INTERNATIONAL BANK FOR RECONSTRUCTION AND DEVELOPMENT</u> <u>Washington, D.C. 20433</u></p> <p>22-ES-36 The Rio Lempa Hydroelectric Project in El Salvador was partly financed by WORLD BANK funds. A large growth in industry was brought about because of the availability of electric power from the Chorrera del Guayabo. This picture shows the Cemento de El Salvador S.A. (CESSA) plant at Acajutla.</p> <p>Photo: Paul Sanche for WORLD BANK. December 1956</p>					



Withdrawn From Circulation

22-65-87



Inches 1 2 3 4 5 6 7 8

Centimetres 1 2 3 4 5 6 7 8 9 10 11 12 13 14 15 16 17 18 19

KODAK Color Control Patches © The Tiffen Company, 2000

Kodak
LICENSED PRODUCT

Blue Cyan Green Yellow Red Magenta White 3/Color Black



22-ES-58



Inches 1 2 3 4 5 6 7 8

Centimetres 1 2 3 4 5 6 7 8 9 10 11 12 13 14 15 16 17 18 19

KODAK Color Control Patches © The Tiffen Company, 2000

Kodak
LICENSED PRODUCT

Blue Cyan Green Yellow Red Magenta White 3/Color Black



PHOTO DISTRIBUTION

Date of Issue	Page Number	Publication	Date of Issue	Page Number
		<p>INTERNATIONAL BANK FOR RECONSTRUCTION AND DEVELOPMENT Washington, D.C. 20433</p> <p>22-ES-38 The Rio Lempa Hydroelectric Project in El Salvador was partly financed by WORLD BANK funds. A large growth in industry was brought about because of the availability of electric power from the Chorrera del Guayabo. Here, two girls are at work in the textile mill of Industrias Unidas S.A. in Ilopango.</p> <p>Photo: Paul Sanche for WORLD BANK. December 1956</p>		



Withdrawn From Circulation

22-ES-39



Inches 1 2 3 4 5 6 7 8

Centimetres 1 2 3 4 5 6 7 8 9 10 11 12 13 14 15 16 17 18 19

KODAK Color Control Patches © The Tiffen Company, 2000

Kodak
LICENSED PRODUCT

Blue Cyan Green Yellow Red Magenta White 3/Color Black



Publication



INTERNATIONAL BANK FOR RECONSTRUCTION AND DEVELOPMENT

PHOTO DISTRIBUTION

Date of Issue

Page Number

Publication

Date of Issue

Page Number

INTERNATIONAL BANK FOR RECONSTRUCTION AND DEVELOPMENT
Washington, D.C. 20433

22-ES-39 The Rio Lempa Hydroelectric Project in El Salvador was partly financed by WORLD BANK funds.

A large growth in industry was brought about because of the availability of electric power from the Chorrera del Guayabo. Here, young girls are at work in the textile mill of Industrias Unidas S.A. in Ilopango.

Photo: Paul Sancho for WORLD BANK.

December 1956

Withdrawn From Circulation

22-ES-40



Inches 1 2 3 4 5 6 7 8

Centimetres 1 2 3 4 5 6 7 8 9 10 11 12 13 14 15 16 17 18 19

KODAK Color Control Patches © The Tiffen Company, 2000

Kodak
LICENSED PRODUCT

Blue Cyan Green Yellow Red Magenta White 3/Color Black



Withdrawn From Circulation

22-ES-41



Inches 1 2 3 4 5 6 7 8

Centimetres 1 2 3 4 5 6 7 8 9 10 11 12 13 14 15 16 17 18 19

KODAK Color Control Patches © The Tiffen Company, 2000

Kodak
LICENSED PRODUCT

Blue Cyan Green Yellow Red Magenta White 3/Color Black





Inches 1 2 3 4 5 6 7 8

Centimetres 1 2 3 4 5 6 7 8 9 10 11 12 13 14 15 16 17 18 19

KODAK Color Control Patches © The Tiffen Company, 2000

Kodak
LICENSED PRODUCT

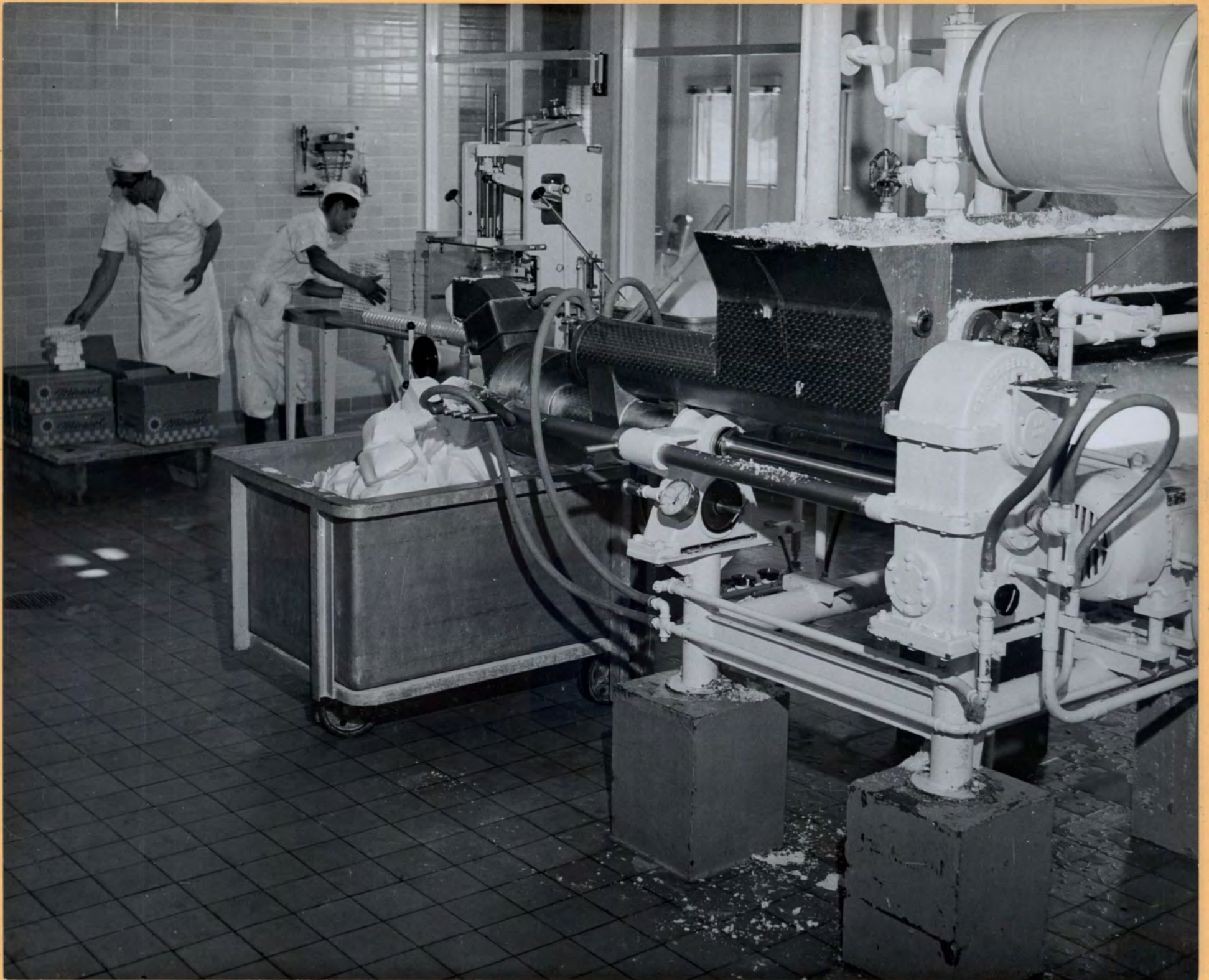
Blue Cyan Green Yellow Red Magenta White 3/Color Black



INTERNATIONAL BANK FOR RECONSTRUCTION AND DEVELOPMENT
PHOTO DISTRIBUTION

Publication	Date of Issue	Page Number	Publication	Date of Issue	Page Number
<p><u>INTERNATIONAL BANK FOR RECONSTRUCTION AND DEVELOPMENT</u> <u>Washington, D.C. 20433</u></p> <p>22-ES-42 The Rio Lempa Hydroelectric Project in El Salvador was partly financed by WORLD BANK funds. A large growth in industry was brought about because of the availability of electric power from the Chorrera del Guayabo. The photo shows a man working in the margarine plant of the Mirasol Margarina in San Salvador.</p> <p>Photo: Paul Sancho for WORLD BANK. December 1956</p>					





Inches 1 2 3 4 5 6 7 8

Centimetres 1 2 3 4 5 6 7 8 9 10 11 12 13 14 15 16 17 18 19

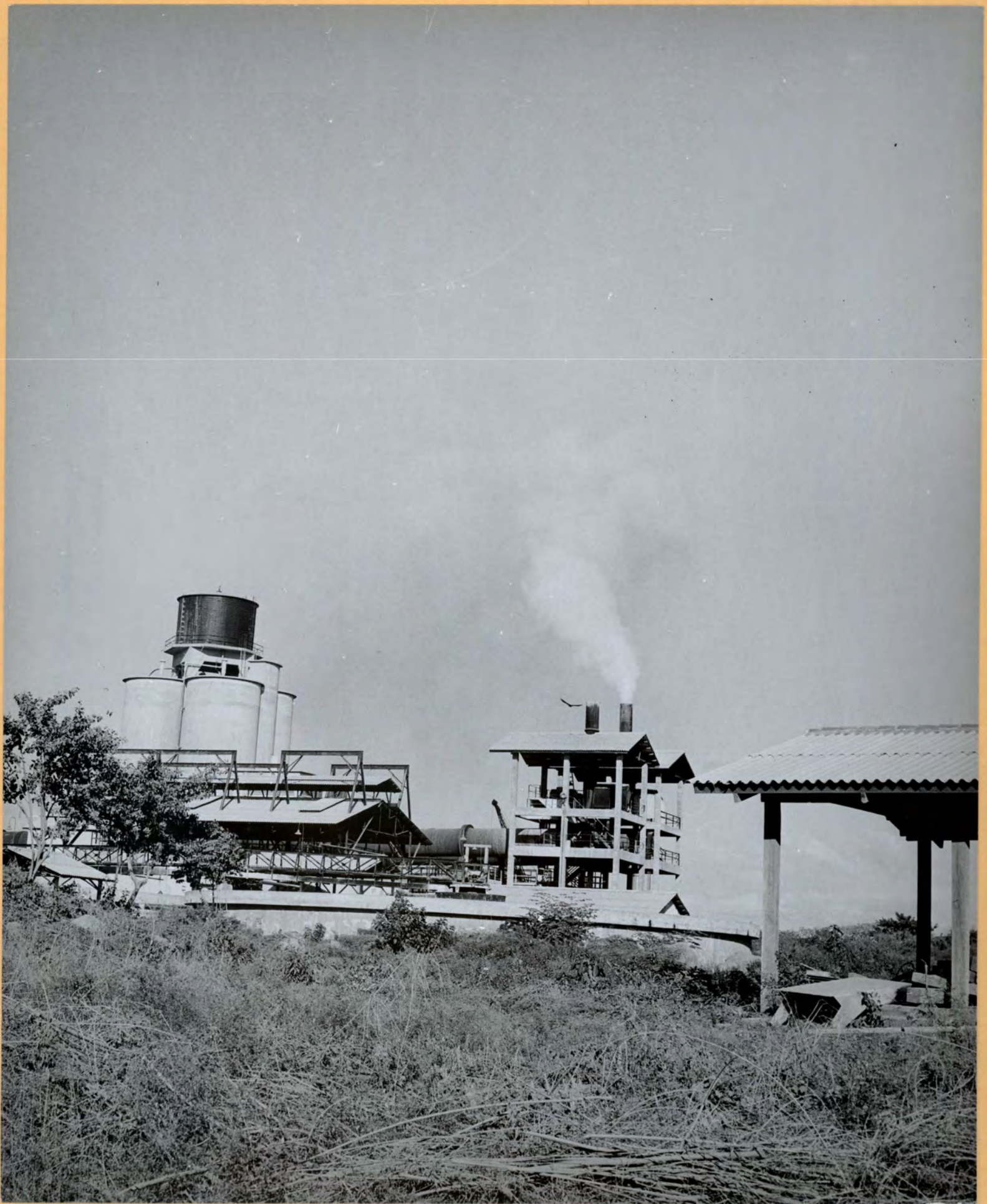
KODAK Color Control Patches © The Tiffen Company, 2000**Kodak**
LICENSED PRODUCT

Blue Cyan Green Yellow Red Magenta White 3/Color Black



12-ES-44

Withdrawn From Circulation



Inches 1 2 3 4 5 6 7 8

Centimetres 1 2 3 4 5 6 7 8 9 10 11 12 13 14 15 16 17 18 19

KODAK Color Control Patches © The Tiffen Company, 2000

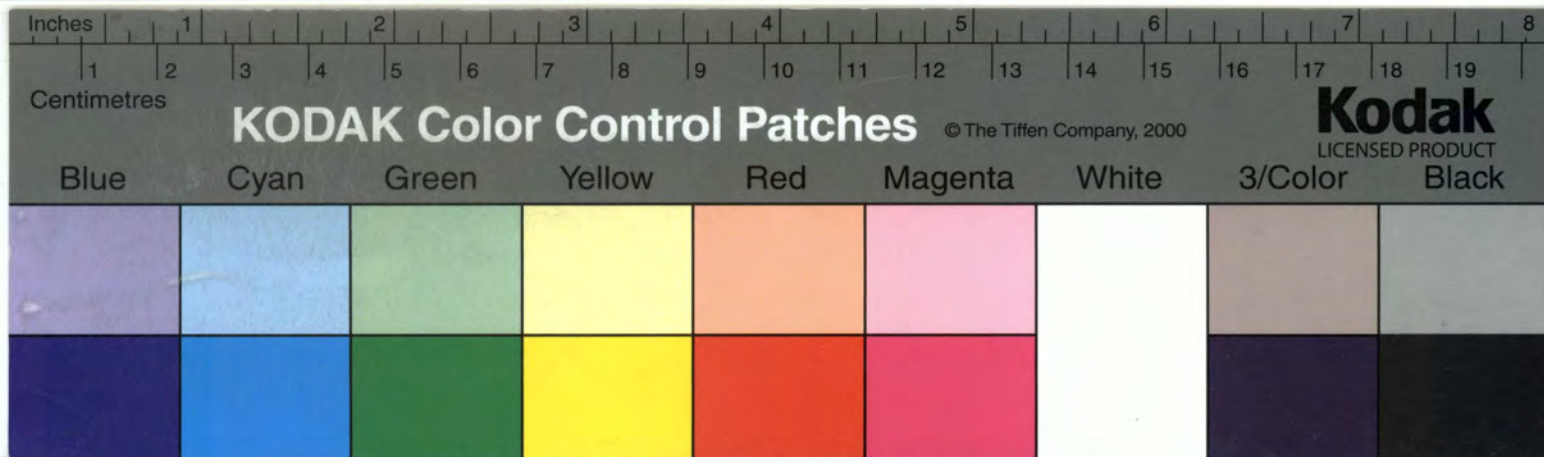
Kodak
LICENSED PRODUCT


Blue	Cyan	Green	Yellow	Red	Magenta	White	3/Color	Black

Publication	Date of Issue	Page Number	Publication	Date of Issue	Page Number
<p><u>INTERNATIONAL BANK FOR RECONSTRUCTION AND DEVELOPMENT</u> <u>Washington, D.C. 20433</u></p> <p>22-ES-44 The Rio Lempa Hydroelectric Project in El Salvador was partly financed by WORLD BANK funds. A large growth in industry was brought about because of the availability of electric power from the Chorrera del Guayabo. Here is a view of the Cemento de El Salvador S.A. (CESSA) at Acajutla.</p>	<p>Photo: Paul Sanche for WORLD BANK. December 1956</p>		<p style="text-align: center;">IBRD / IDA AV/123 WBG ARCHIVES</p>		

Withdrawn From Circulation

22-ES-45



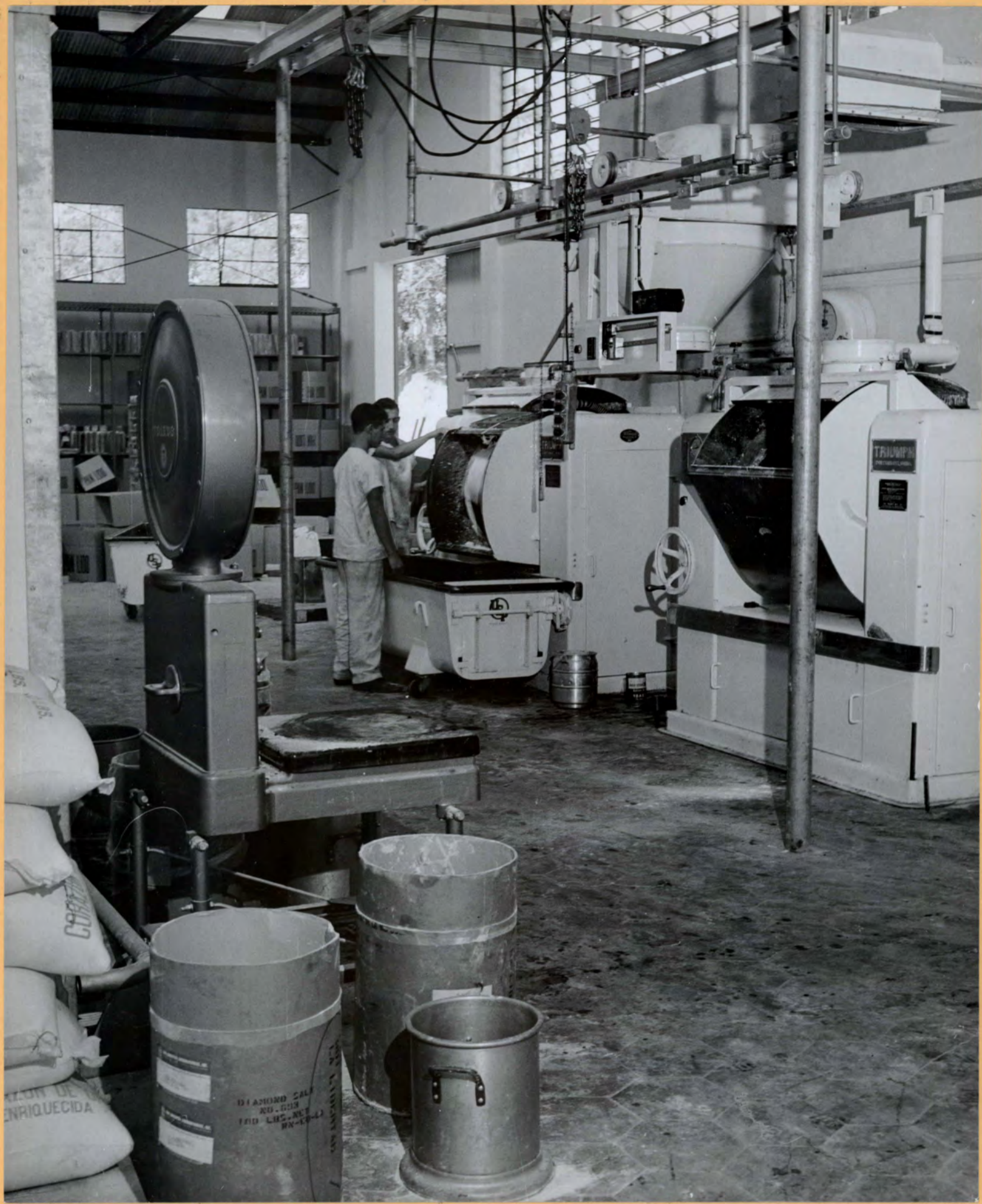
Publication	Date of Issue	Page Number	Publication	Date of Issue	Page Number
<p><u>INTERNATIONAL BANK FOR RECONSTRUCTION AND DEVELOPMENT</u> <u>Washington, D.C. 20433</u></p> <p>22-ES-45 The Rio Lempa Hydroelectric Project in El Salvador was partly financed by WORLD BANK funds. A large growth in industry was brought about because of the availability of electric power from the Chorrera del Guayabo. This is a view of the Cemento de El Salvador S.A. (CESSA) plant at Acajutla.</p> <p>Photo: Paul Senche for WORLD BANK. December 1956</p>			<p style="text-align: center;">  </p>		

Withdrawn From Circulation

22-ES-46



22-ES-47



Inches 1 2 3 4 5 6 7 8

Centimetres

KODAK Color Control Patches

© The Tiffen Company, 2000

Kodak

LICENSED PRODUCT

Blue

Cyan

Green

Yellow

Red

Magenta

White

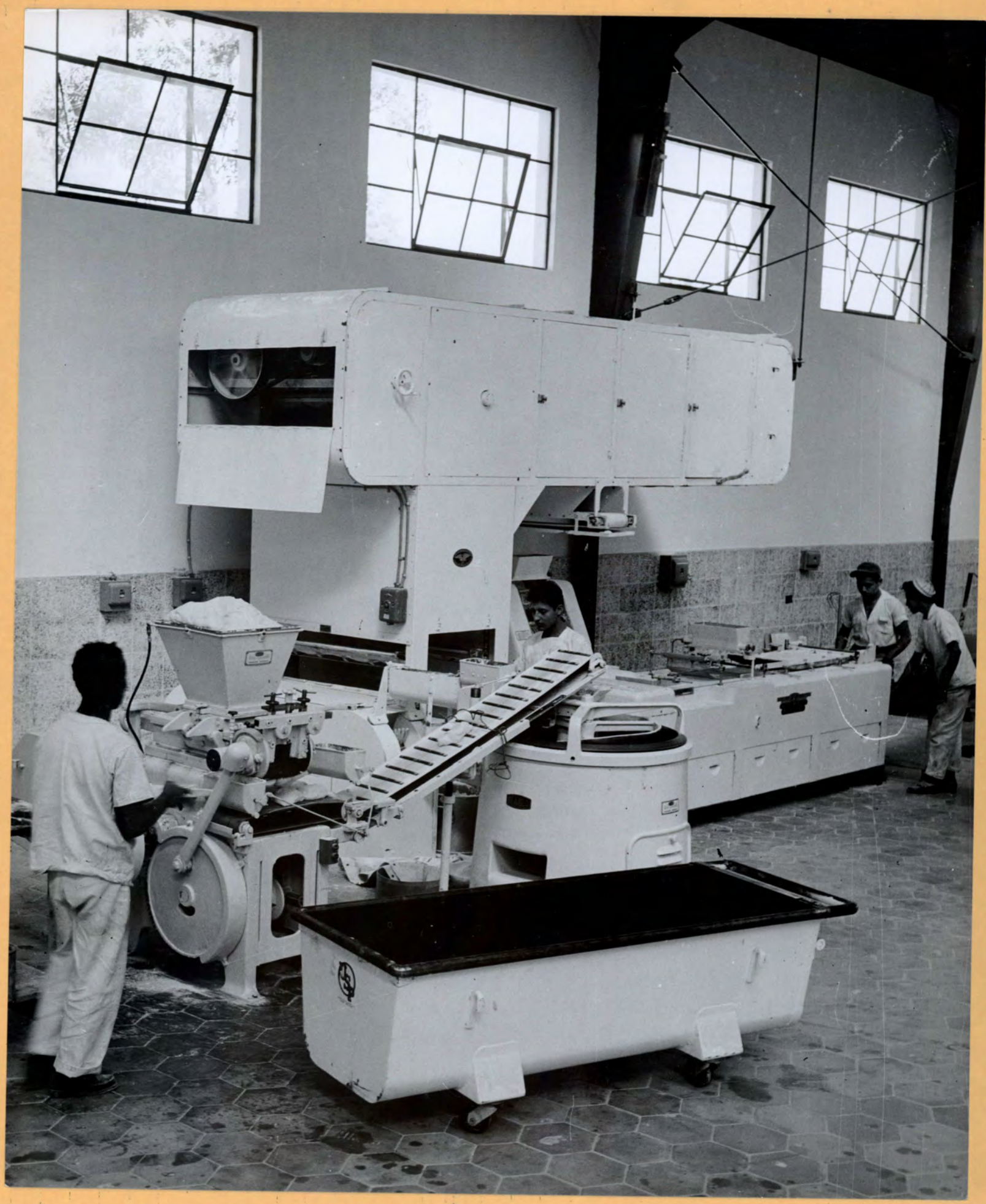
3/Color

Black



22-55-48

Withdrawn From Circulation

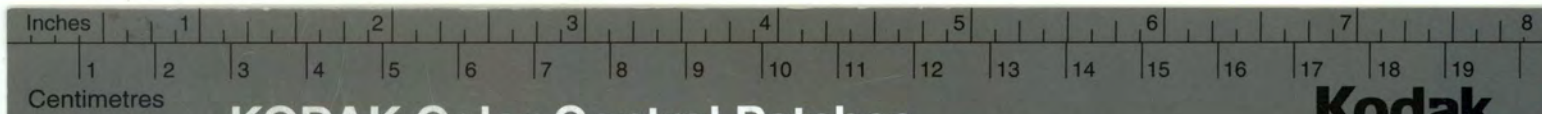
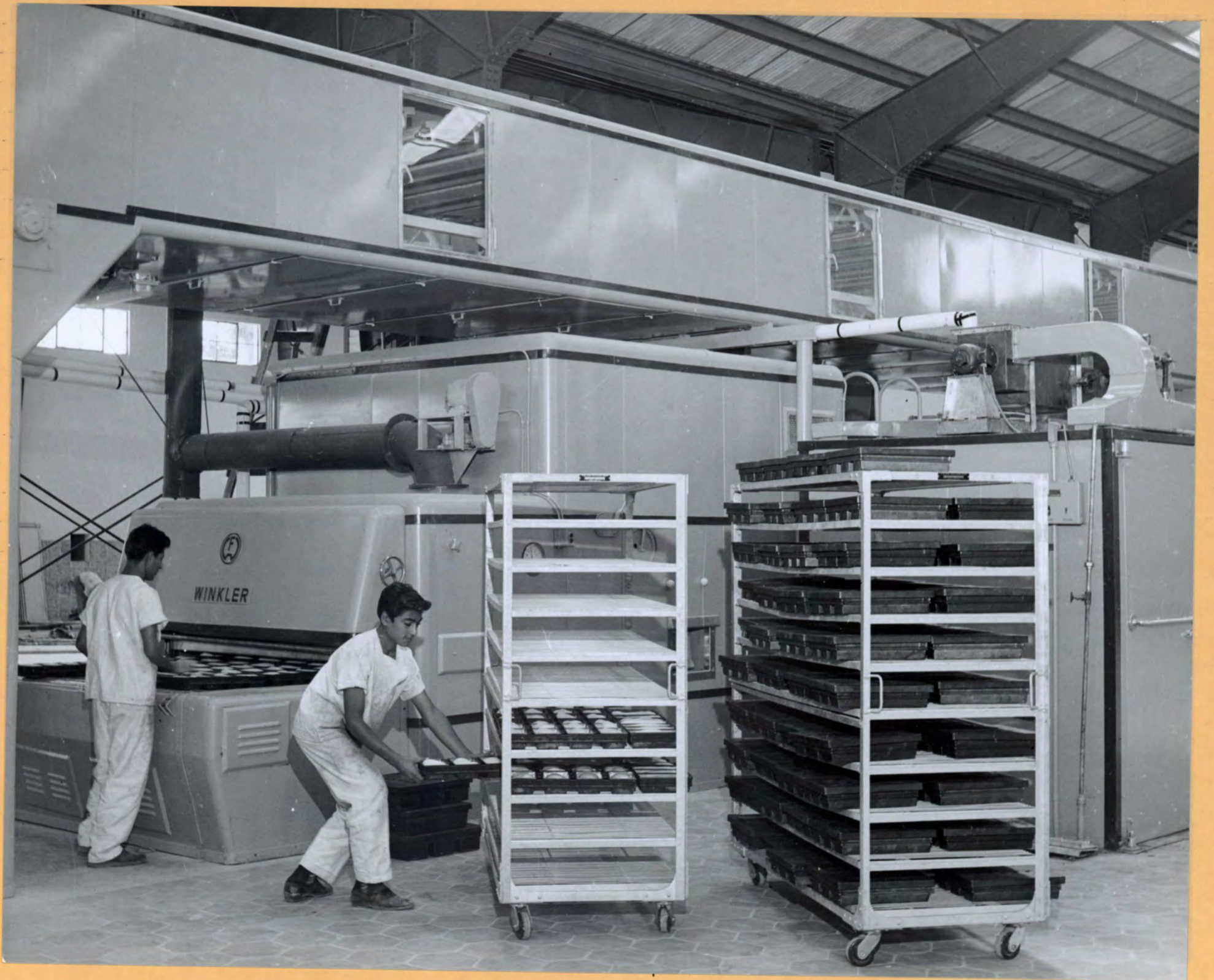


Inches 1 2 3 4 5 6 7 8
 Centimetres 1 2 3 4 5 6 7 8 9 10 11 12 13 14 15 16 17 18 19

KODAK Color Control Patches © The Tiffen Company, 2000

Blue Cyan Green Yellow Red Magenta White 3/Color Black

22 - E5 - 49



KODAK Color Control Patches

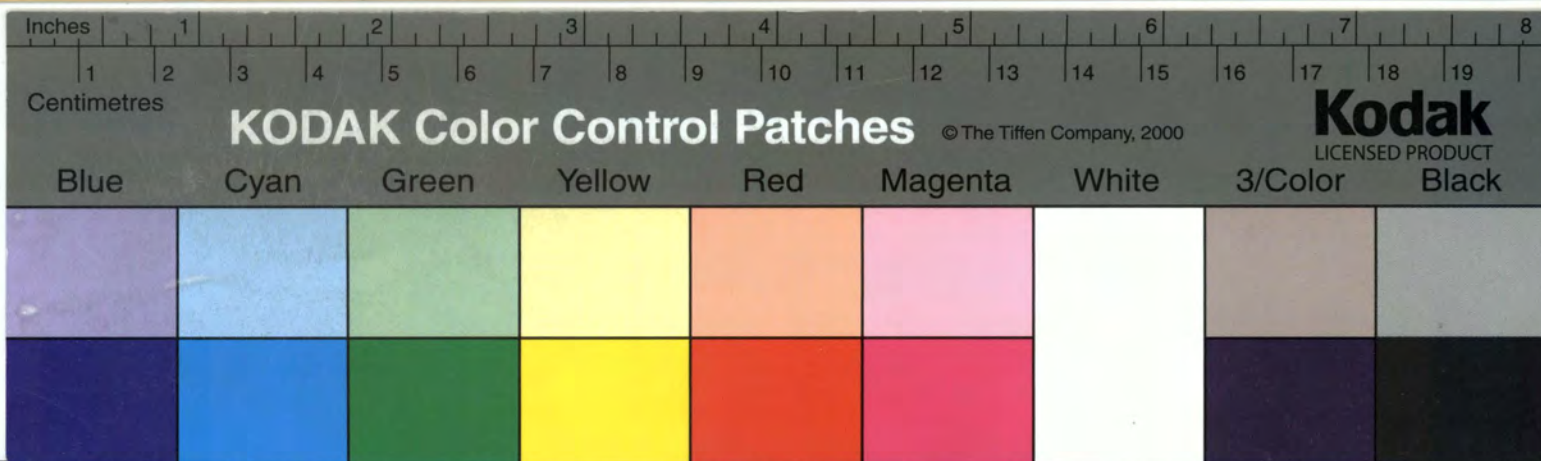
© The Tiffen Company, 2000

Kodak
LICENSED PRODUCT

Blue Cyan Green Yellow Red Magenta White 3/Color Black



22-ES-50



22 - 45 - 51

Withdrawn from Circulation



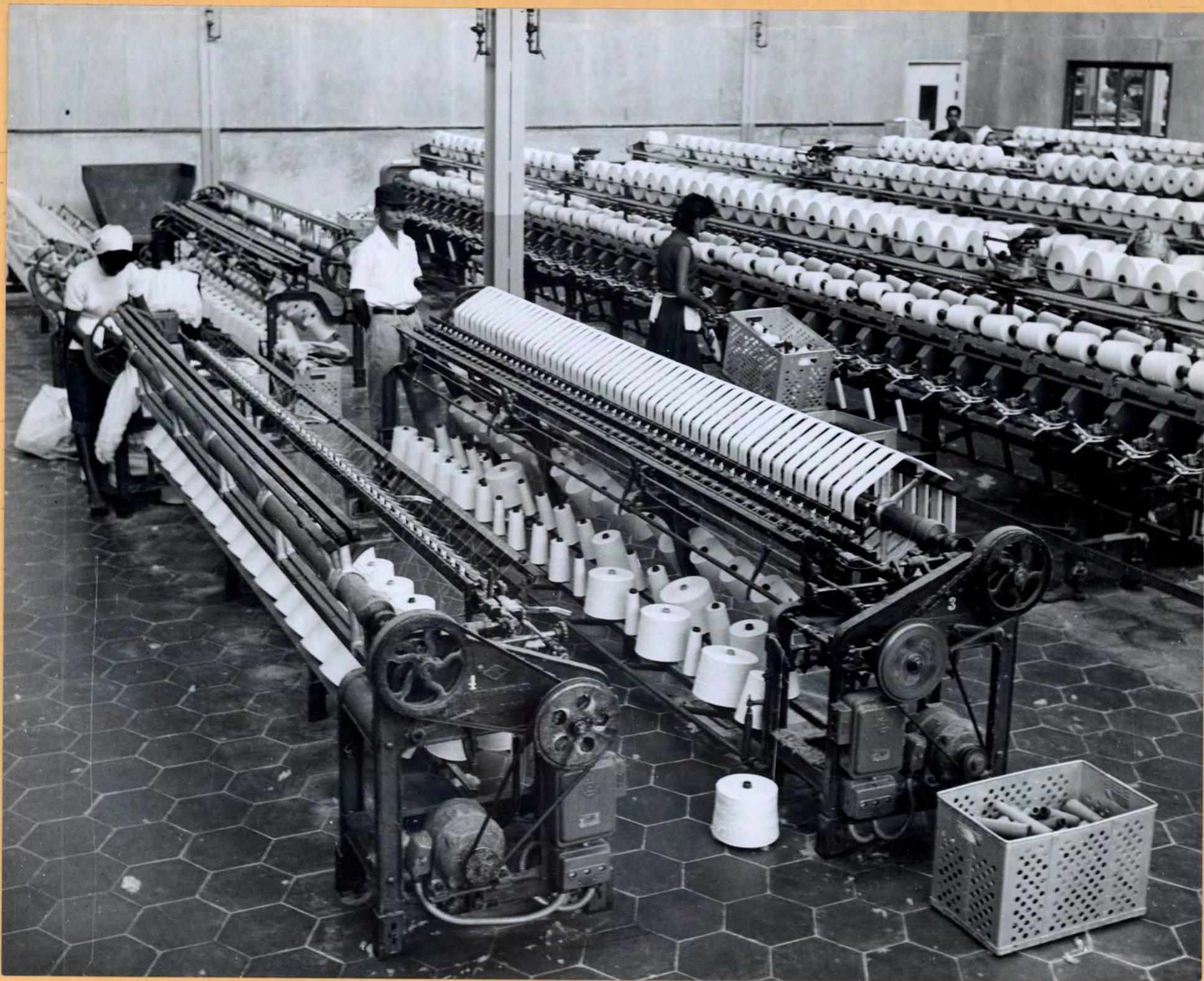
Inches 1 2 3 4 5 6 7 8
 Centimetres 1 2 3 4 5 6 7 8 9 10 11 12 13 14 15 16 17 18 19 8

KODAK Color Control Patches © The Tiffen Company, 2000

Blue Cyan Green Yellow Red Magenta White 3/Color Black

Withdrawn From Circulation

22.ES-52



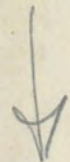


Publication	Date of Issue	Page Number	Publication	Date of Issue	Page Number
<p><u>INTERNATIONAL BANK FOR RECONSTRUCTION AND DEVELOPMENT</u> <u>Washington, D.C. 20433</u></p> <p>22-ES-52 The Rio Lempa Hydroelectric Project in El Salvador was partly financed by WORLD BANK funds. A large growth in industry was brought about because of the availability of electric power. Here is a view inside the textile mill of the Industrias Unidas S.A. at Ilopango.</p> <p>Photo: Paul Sanche for WORLD BANK. December 1956</p>					

22 FS 53

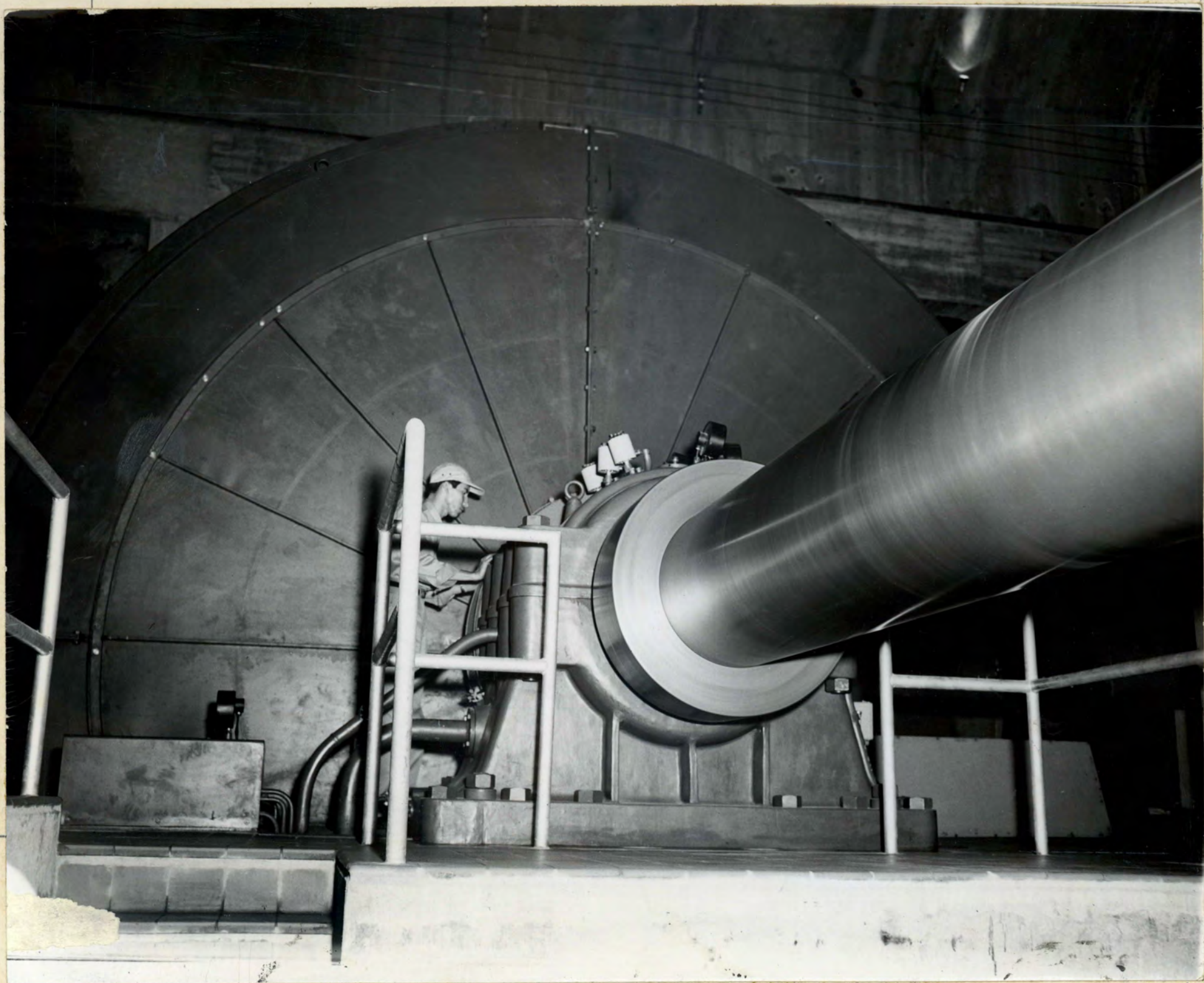
4

25 1/8"



R108

4"

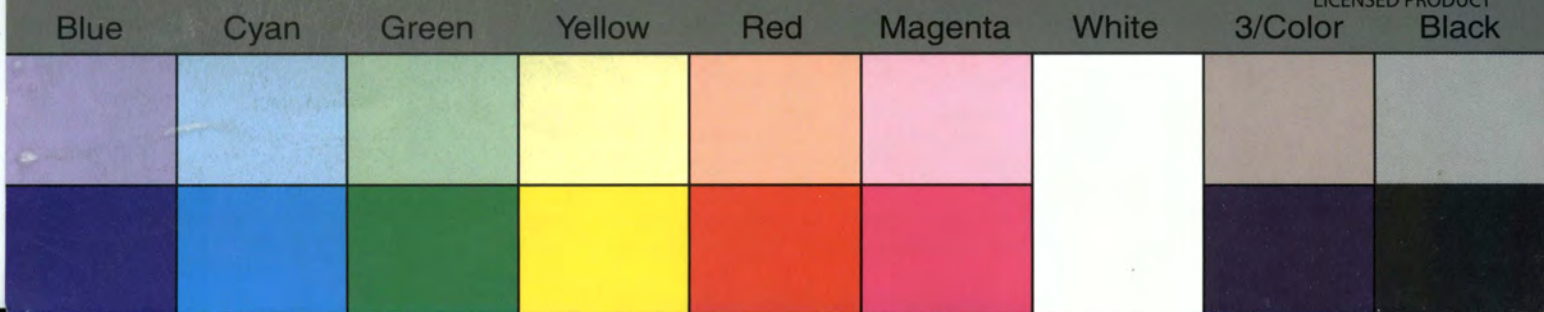


Inches 1 2 3 4 5 6 7 8

Centimetres 1 2 3 4 5 6 7 8 9 10 11 12 13 14 15 16 17 18 19

KODAK Color Control Patches © The Tiffen Company, 2000

Kodak LICENSED PRODUCT



INTERNATIONAL BANK FOR RECONSTRUCTION AND DEVELOPMENT
Washington, D.C. 20433

22-ES-53 The Rio Lempa Hydroelectric Project in El
Salvador was partly financed by WORLD BANK funds.
Here is an interior view in the plant, just prior
to opening.

Photo: Rio Lempa Hydroelectric Commission. pre-1955

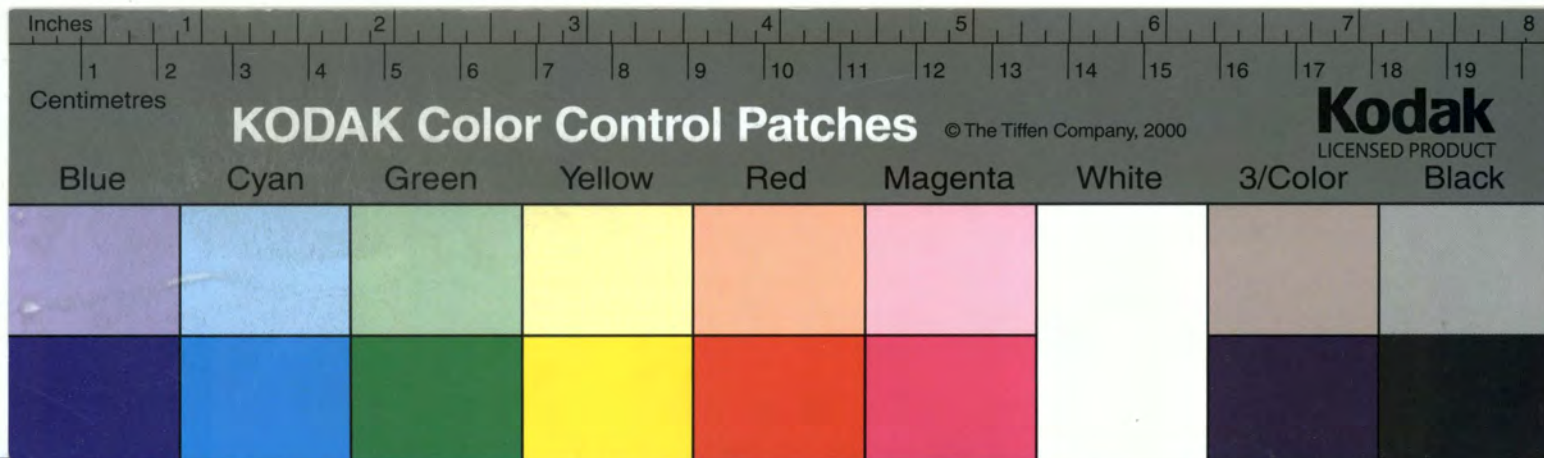
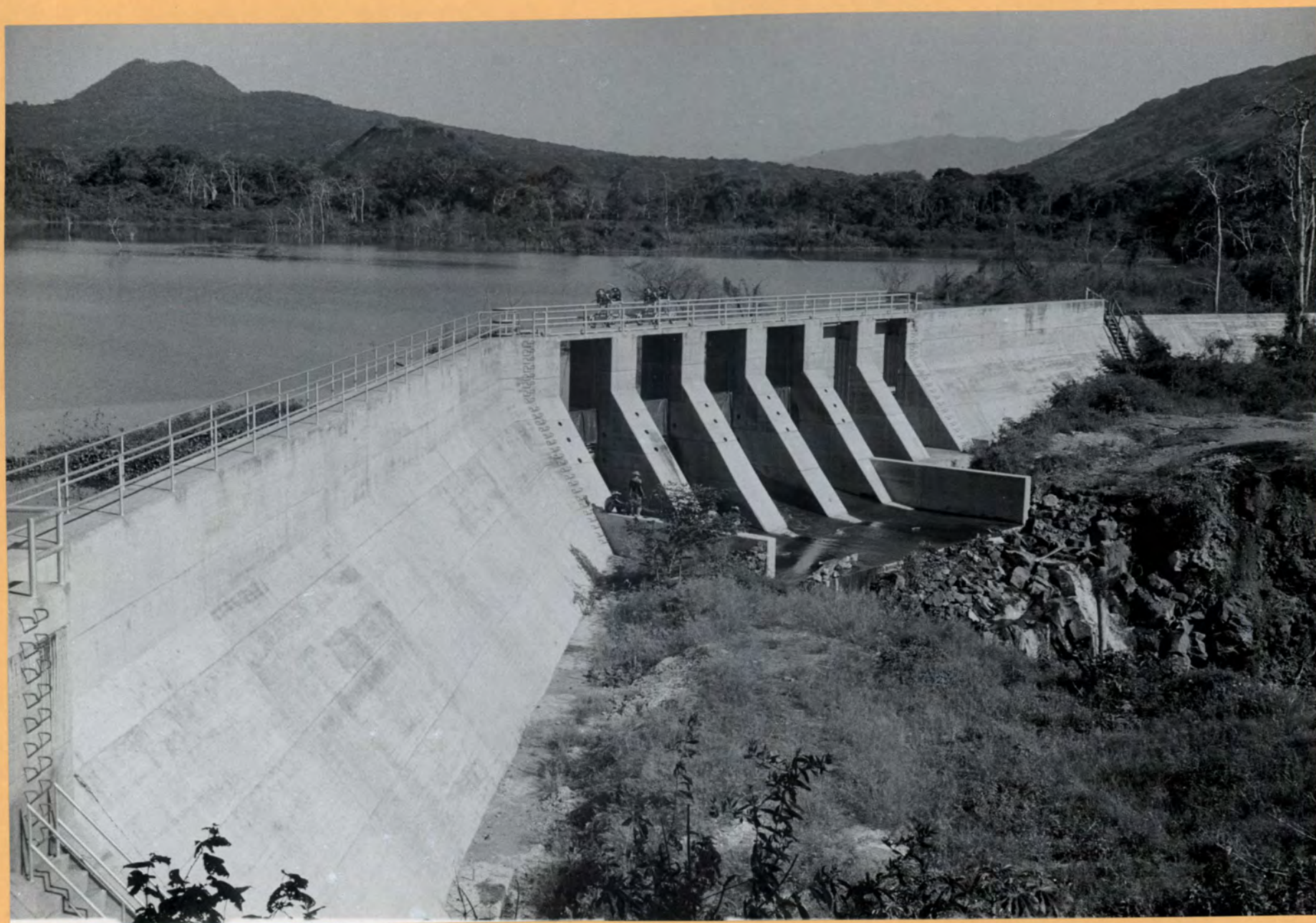
22-ES-53

Source: Rio Lempa (?)
taken just after plant was




PICTURE 1
PAGE 7 - TOP

22-E5-54



INTERNATIONAL BANK FOR RECONSTRUCTION AND DEVELOPMENT
PHOTO DISTRIBUTION

KF

Publication	Date of Issue	Page Number	Publication	Date of Issue	Page Number
<p><u>INTERNATIONAL BANK FOR RECONSTRUCTION AND DEVELOPMENT</u> <u>Washington, D.C. 20433</u></p> <p>22-ES-54 The Rio Lempa Hydroelectric Project in El Salvador was partly financed by WORLD BANK funds. Here is a view of Lake Guija dam.</p> <p>Photo: World Bank Staff December 1957</p>			<p style="text-align: center;"></p>		

Withdrawn from Circulation

22-ES-55

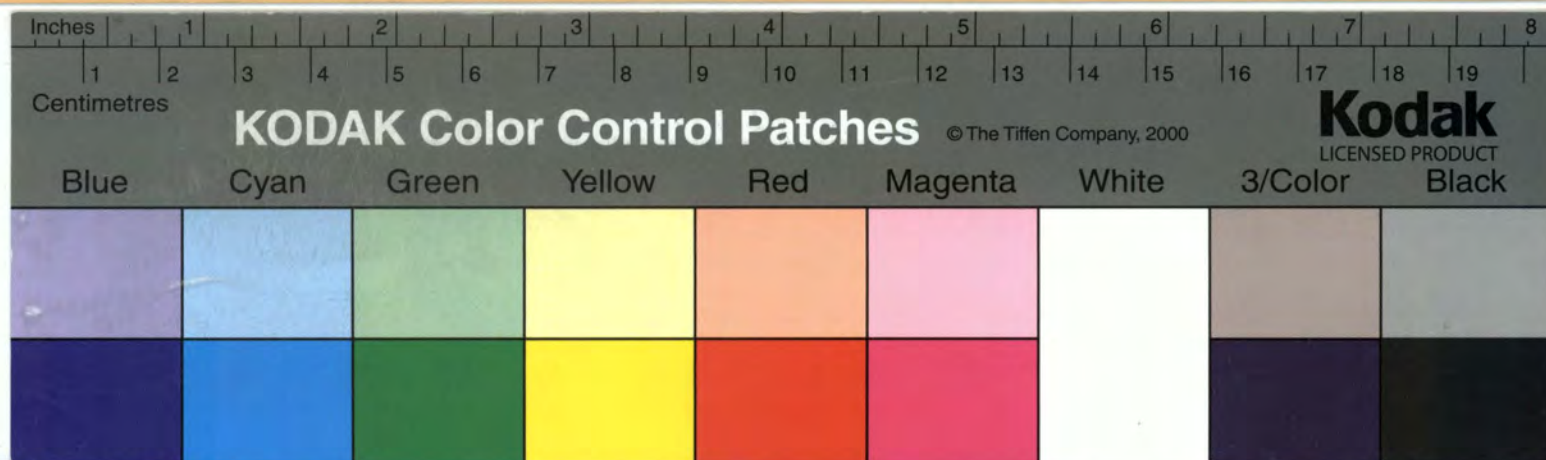
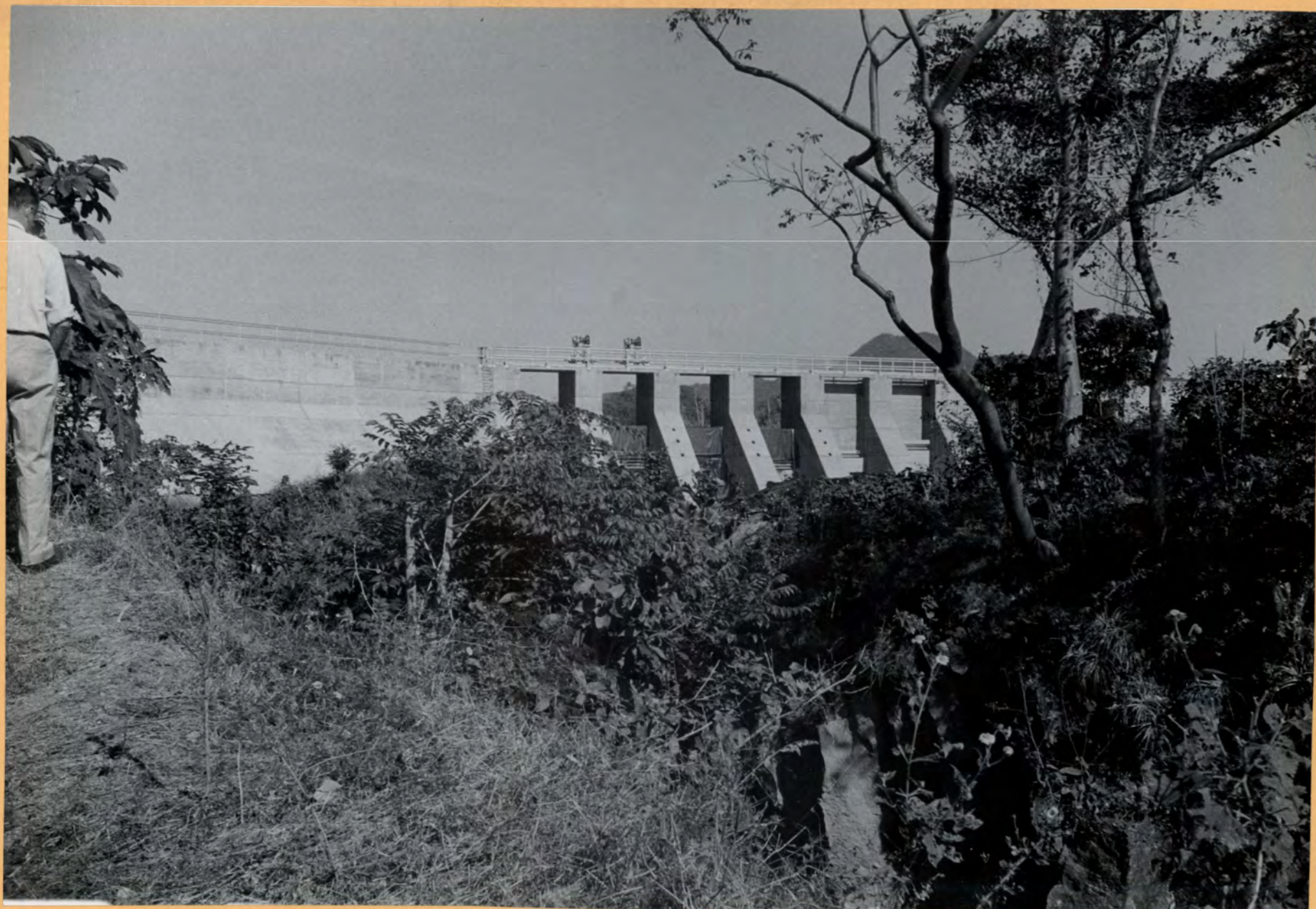



PHOTO DISTRIBUTION

Publication	Date of Issue	Page Number	Publication	Date of Issue	Page Number
<p><u>INTERNATIONAL BANK FOR RECONSTRUCTION AND DEVELOPMENT</u> <u>Washington, D.C. 20433</u></p> <p>22-ES-55 A WORLD BANK loan helped to finance a new hydroelectric power station on the River Lempa, which trebled the power supply of El Salvador. In 1957 a dam was built at the outlet of Lake Guija 100 miles upstream from the power plant to store water during the rainy season. This would enable a constant flow of water to the Lempa power plant throughout the year. The photo shows Lake Guija dam. A second power plant was to be constructed near this dam to take advantage of the fall of the water from Lake Guija to the River Lempa.</p> <p>Photo: World Bank Staff</p>	<p>December 1957</p>				

INTERNATIONAL BANK FOR RECONSTRUCTION AND DEVELOPMENT
PHOTO DISTRIBUTION

Publication	Date of Issue	Page Number	Publication	Date of Issue	Page Number
			<p>22-ES-56 A WORLD BANK loan of \$12.5 million made in 1950 helped to finance a new hydroelectric power station on the River Lempa, which trebled the power supply of El Salvador. In 1957 a dam was built at the outlet of Lake Guija 100 miles upstream from the power plant to store water during the rainy season. This would enable a constant flow of water to the Lempa power plant throughout the year.</p> <p>The photo shows the village near the Lake Guija dam. The railway line shown is the main line between Guatemala and San Salvador, the capital of El Salvador. Another power station is to be constructed in this locality to take advantage of the fall of the water from Lake Guija to the River Lempa.</p> <p>Photo: World Bank Staff</p>	<p><u>INTERNATIONAL BANK FOR RECONSTRUCTION AND DEVELOPMENT</u> <u>Washington, D.C. 20A33</u></p> <p>December 1957</p>	

