

THE WORLD BANK GROUP ARCHIVES

PUBLIC DISCLOSURE AUTHORIZED

Folder Title: Country Photographs - Chile - Loan 153 - Photographs
Folder ID: 1717454
Fonds: Records of Office of External Affairs (WB IBRD/IDA EXT)

Digitized: August 26, 2014

To cite materials from this archival folder, please follow the following format:
[Descriptive name of item], [Folder Title], Folder ID [Folder ID], World Bank Group Archives, Washington, D.C., United States.

The records in this folder were created or received by The World Bank in the course of its business.

The records that were created by the staff of The World Bank are subject to the Bank's copyright.

Please refer to <http://www.worldbank.org/terms-of-use-earchives> for full copyright terms of use and disclaimers.



THE WORLD BANK
Washington, D.C.

© 2012 International Bank for Reconstruction and Development / International Development Association or
The World Bank
1818 H Street NW
Washington DC 20433
Telephone: 202-473-1000
Internet: www.worldbank.org

PUBLIC DISCLOSURE AUTHORIZED

CHILE - LN-153

The World Bank Group
Archives



1717454

R2002-110 Other #: 30 217360B

Country Photographs - Chile - Loan 153 - Photographs

DECLASSIFIED
WBG Archives

153-CH-7



Inches 1 2 3 4 5 6 7 8

Centimetres 1 2 3 4 5 6 7 8 9 10 11 12 13 14 15 16 17 18 19

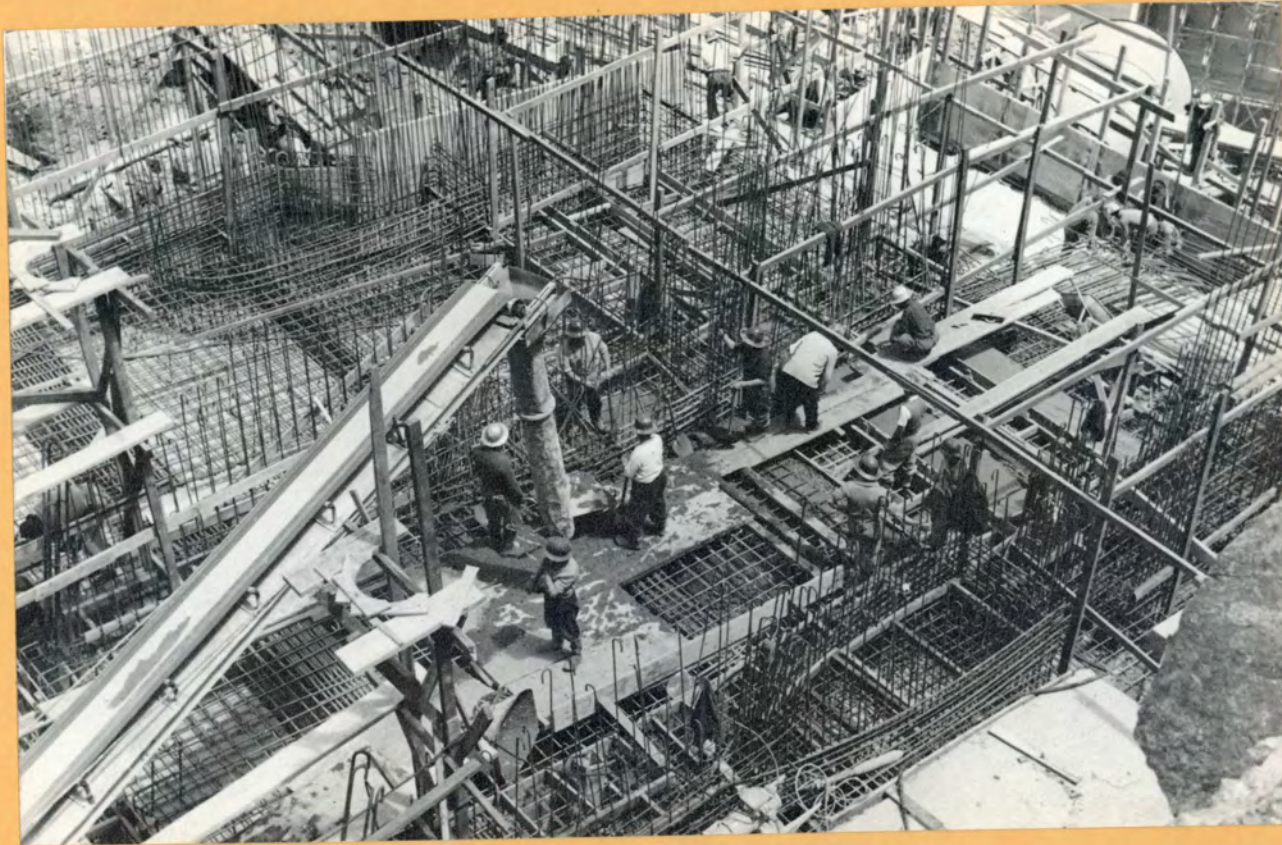
KODAK Color Control Patches © The Tiffen Company, 2000

Kodak
LICENSED PRODUCT

Blue Cyan Green Yellow Red Magenta White 3/Color Black



153-CH-6



Inches 1 2 3 4 5 6 7 8

Centimetres 1 2 3 4 5 6 7 8 9 10 11 12 13 14 15 16 17 18 19

KODAK Color Control Patches © The Tiffen Company, 2000

Kodak
LICENSED PRODUCT

Blue Cyan Green Yellow Red Magenta White 3/Color Black



153-CH-5

IBRD/IDA
AV185
WBG
ARCHIVES



Inches 1 2 3 4 5 6 7 8

Centimetres 1 2 3 4 5 6 7 8 9 10 11 12 13 14 15 16 17 18 19

KODAK Color Control Patches © The Tiffen Company, 2000

Kodak
LICENSED PRODUCT

Blue Cyan Green Yellow Red Magenta White 3/Color Black



INTERNATIONAL BANK FOR RECONSTRUCTION AND DEVELOPMENT
Washington, D.C. 20433

153-CH-5 Building a diversion canal at the Pullingue
hydroelectric power plant on the Huachue River in
Chile. This project was assisted by funds from a
WORLD BANK loan.

Photo: ENDESA

1959

153-01-4

IBRD / IDA
AV 185
WBG
ARCHIVES

IBRD / IDA
WBG
ARCHIVES



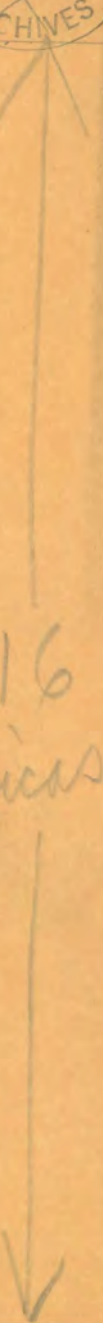
XX
X



16



16
pics



22 pics

Inches 1 2 3 4 5 6 7 8

Centimetres 1 2 3 4 5 6 7 8 9 10 11 12 13 14 15 16 17 18 19

KODAK Color Control Patches © The Tiffen Company, 2000

Kodak
LICENSED PRODUCT

Blue Cyan Green Yellow Red Magenta White 3/Color Black



INTERNATIONAL BANK FOR RECONSTRUCTION AND DEVELOPMENT
Washington, D.C. 20433

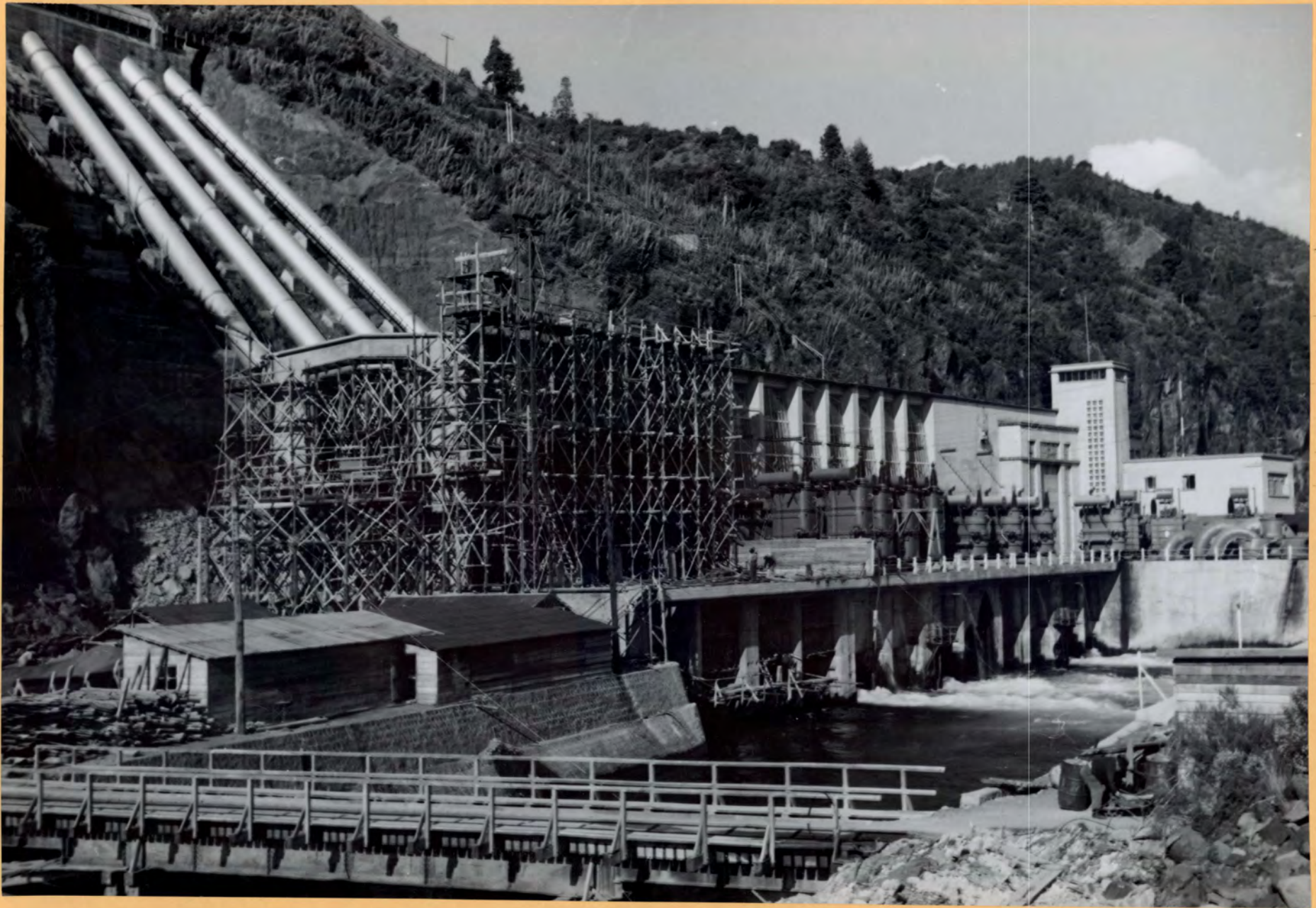
153-CH-4 Building a diversion canal at the Pullinque hydroelectric power plant on the Huanchao River in Chile. This project was assisted by funds from a WORLD BANK loan.

Photo: ENDESA

1959

ORDER No.

1181



Inches 1 2 3 4 5 6 7 8

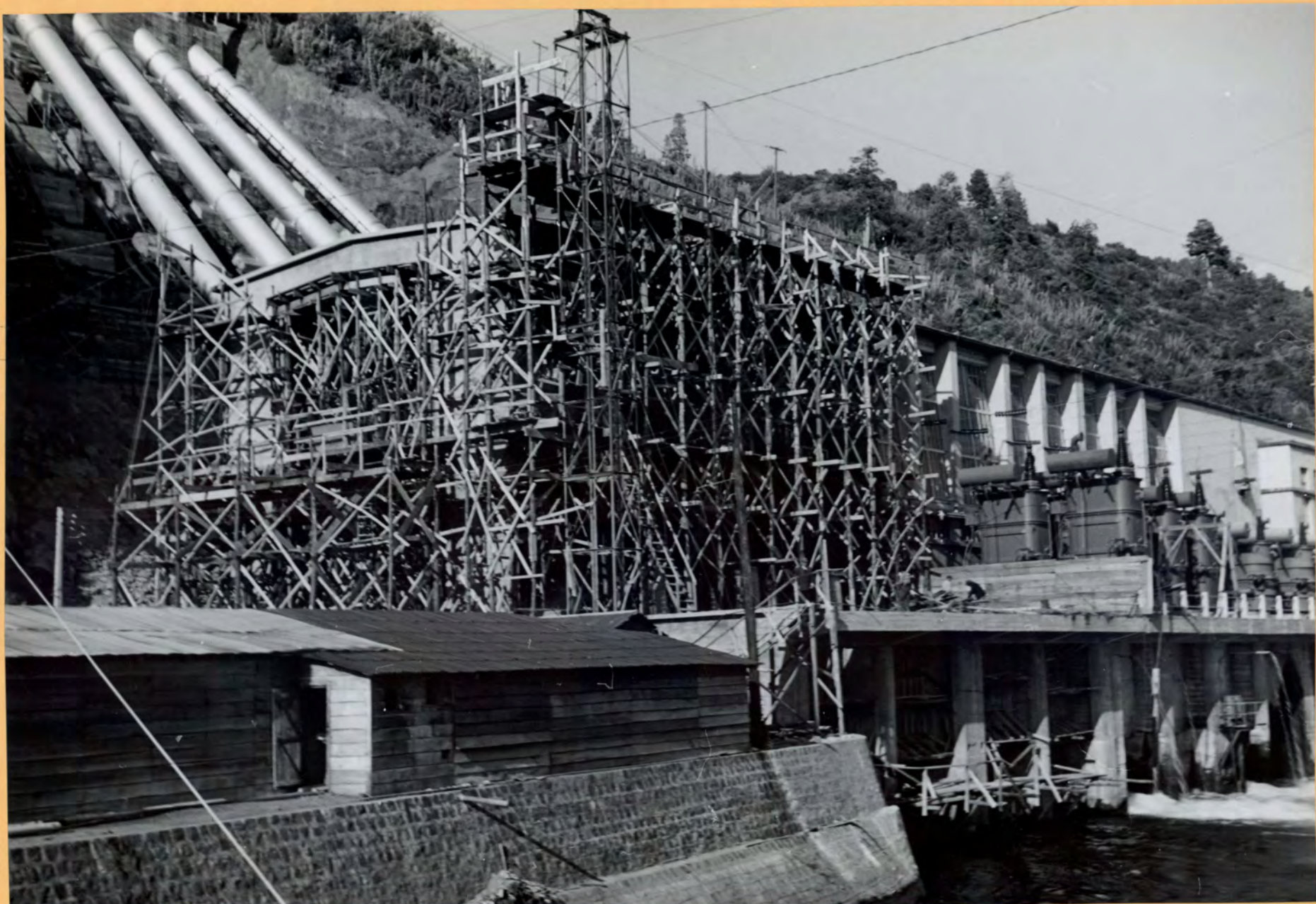
Centimetres 1 2 3 4 5 6 7 8 9 10 11 12 13 14 15 16 17 18 19

KODAK Color Control Patches © The Tiffen Company, 2000

Kodak
LICENSED PRODUCT

Blue Cyan Green Yellow Red Magenta White 3/Color Black





Inches 1 2 3 4 5 6 7 8

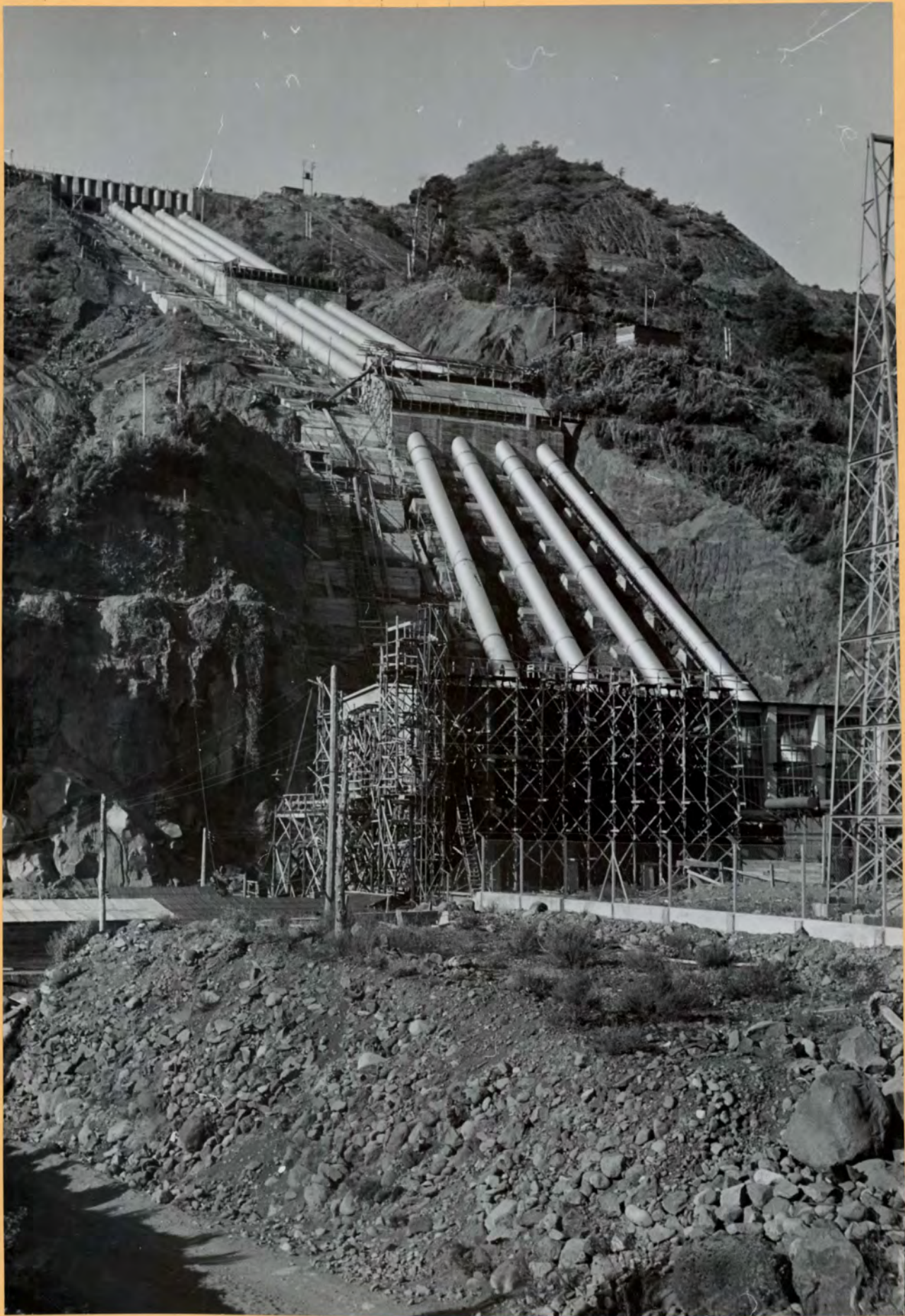
Centimetres 1 2 3 4 5 6 7 8 9 10 11 12 13 14 15 16 17 18 19

KODAK Color Control Patches © The Tiffen Company, 2000

Kodak
LICENSED PRODUCT

Blue Cyan Green Yellow Red Magenta White 3/Color Black





IBRD / IDA
AUS
WBG
ARCHIVES

153-CH-1

Inches 1 2 3 4 5 6 7 8
Centimetres 1 2 3 4 5 6 7 8 9 10 11 12 13 14 15 16 17 18 19

KODAK Color Control Patches © The Tiffen Company, 2000

Kodak
LICENSED PRODUCT

Blue Cyan Green Yellow Red Magenta White 3/Color Black



20-153-CH-1

IBRD / IDA
AV/85
WBG
ARCHIVES



Inches 1 2 3 4 5 6 7 8

Centimetres 1 2 3 4 5 6 7 8 9 10 11 12 13 14 15 16 17 18 19

KODAK Color Control Patches © The Tiffen Company, 2000

Kodak
LICENSED PRODUCT

Blue Cyan Green Yellow Red Magenta White 3/Color Black



40-153-CH-2



Inches 1 2 3 4 5 6 7 8

Centimetres 1 2 3 4 5 6 7 8 9 10 11 12 13 14 15 16 17 18 19

KODAK Color Control Patches © The Tiffen Company, 2000

Kodak
LICENSED PRODUCT

Blue Cyan Green Yellow Red Magenta White 3/Color Black

