

THE WORLD BANK GROUP ARCHIVES

PUBLIC DISCLOSURE AUTHORIZED

Folder Title: Country Photographs - El Salvador - Loan 22 - Photographs - Volume 2

Folder ID: 30239315

Fonds: Records of Office of External Affairs (WB IBRD/IDA EXT)

Digitized: October 21, 2014

To cite materials from this archival folder, please follow the following format:
[Descriptive name of item], [Folder Title], Folder ID [Folder ID], World Bank Group Archives, Washington, D.C., United States.

The records in this folder were created or received by The World Bank in the course of its business.

The records that were created by the staff of The World Bank are subject to the Bank's copyright.

Please refer to <http://www.worldbank.org/terms-of-use-earchives> for full copyright terms of use and disclaimers.



THE WORLD BANK
Washington, D.C.

© 2012 International Bank for Reconstruction and Development / International Development Association or
The World Bank
1818 H Street NW
Washington DC 20433
Telephone: 202-473-1000
Internet: www.worldbank.org

PUBLIC DISCLOSURE AUTHORIZED

EL SALVADOR - LN-22 Vol. 2

DECLASSIFIED
WBG Archives

The World Bank Group
Archives
30239315
R2002-110 Other #: 55 217385B
Country Photographs - El Salvador - Loan 22 - Photographs - Volume 2

C



0.3"

22-5-19

$3\frac{1}{4}$ "

50.0

X X X

No. 15. P8.

Inches 1 2 3 4 5 6 7 8

Centimetres 1 2 3 4 5 6 7 8 9 10 11 12 13 14 15 16 17 18 19

KODAK Color Control Patches © The Tiffen Company, 2000

Kodak
LICENSED PRODUCT

Blue Cyan Green Yellow Red Magenta White 3/Color Black



22-ES-19

INTERNATIONAL BANK FOR RECONSTRUCTION AND DEVELOPMENT
Washington, D.C. 20433

22-ES-19 The Rio Lempa Hydroelectric Project in El Salvador was partly financed by WORLD BANK funds.


Here, a young girl is operating textile machinery in the Industrias Unidas S.A. textile mill in Ilopango. This mill was established in El Salvador because of the increased supply of electric power.

Photo: Paul Sanchez for WORLD BANK

December 1956

IBRD/IDA
WBG
ARCHIVES

IBRD/IDA
WBG
ARCHIVES

Publication	Date of Issue	Page Number	Publication	Date of Issue	Page Number
<p><u>INTERNATIONAL BANK FOR RECONSTRUCTION AND DEVELOPMENT</u> <u>Washington, D.C. 20433</u></p> <p>22-ES-20 The Rio Lempa Hydroelectric Project in El Salvador was partly financed by WORLD BANK funds. A large growth in industry was brought about because of the availability of electric power from the Chorrera del Guayabo. The photo shows margarine being prepared for packing at the Mirasol Margarina plant in San Salvador.</p> <p>Photo: Paul Sancho for WORLD BANK. December 1956</p>					

22-53-21



Inches 1 2 3 4 5 6 7 8


Centimetres 1 2 3 4 5 6 7 8 9 10 11 12 13 14 15 16 17 18 19

KODAK Color Control Patches © The Tiffen Company, 2000

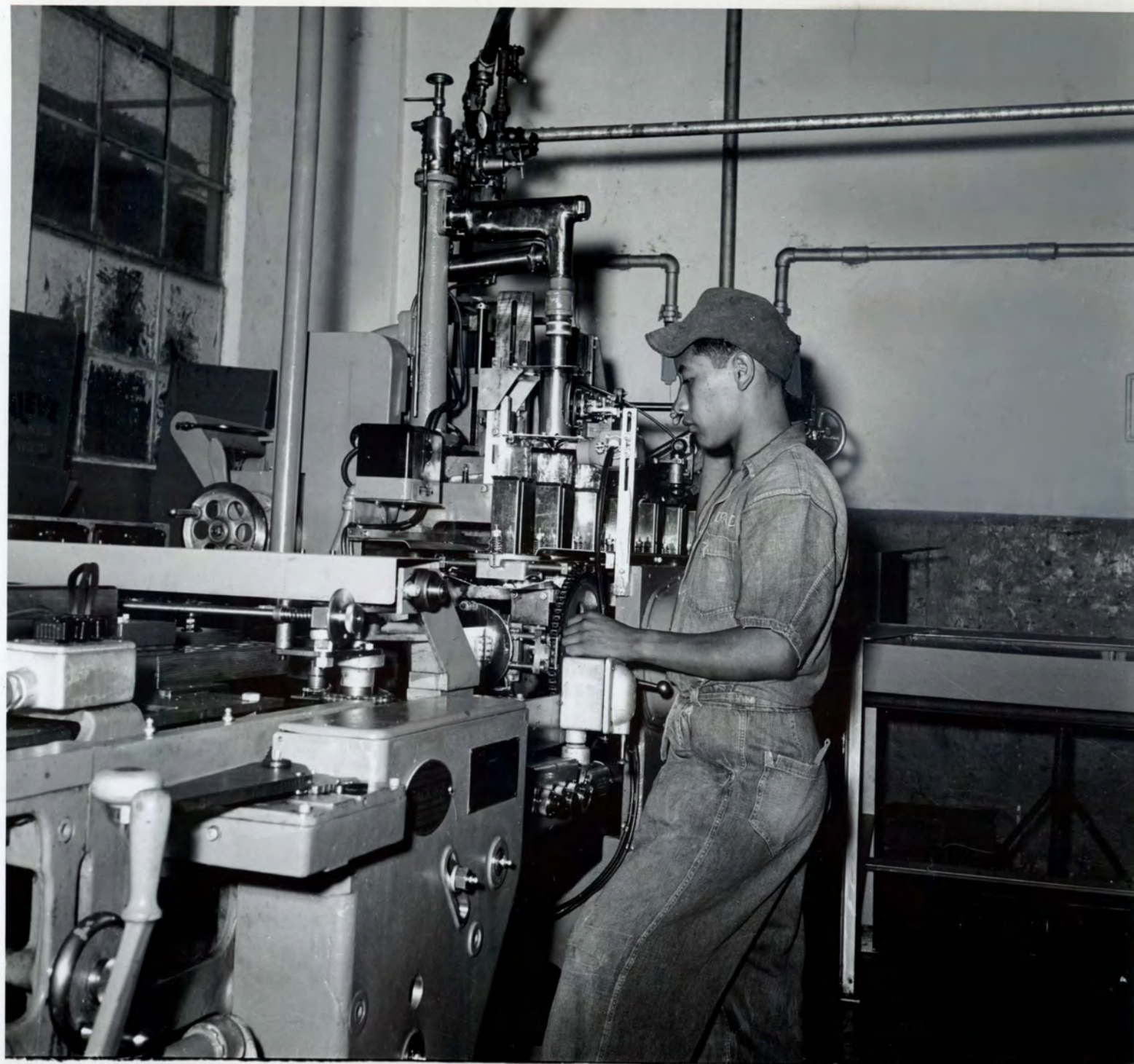
Kodak
LICENSED PRODUCT

Blue Cyan Green Yellow Red Magenta White 3/Color Black



Publication	Date of Issue	Page Number	Publication	Date of Issue	Page Number
<p><u>INTERNATIONAL BANK FOR RECONSTRUCTION AND DEVELOPMENT</u> <u>Washington, D.C. 20433</u></p> <p>22-ES-21 The Rio Lempa Hydroelectric Project in El Salvador was partly financed by WORLD BANK funds. A large growth in industry was brought about because of the availability of electric power from the Chorrera del Guayabo. The photo shows margarine being prepared for packing at the Mirasol Margarina plant in San Salvador.</p> <p>Photo: Paul Sanchez for WORLD BANK. December 1956</p>			<p style="text-align: center;"></p>		

22-ES-22



Inches 1 2 3 4 5 6 7 8

Centimetres 1 2 3 4 5 6 7 8 9 10 11 12 13 14 15 16 17 18 19

KODAK Color Control Patches © The Tiffen Company, 2000

Kodak
LICENSED PRODUCT

Blue Cyan Green Yellow Red Magenta White 3/Color Black



El Salvador

INTERNATIONAL BANK FOR RECONSTRUCTION AND DEVELOPMENT
Washington, D.C. 20433

22-ES-22 The Rio Lempa Hydroelectric Project in El Salvador was partly financed by WORLD BANK funds.

A large growth in industry was brought about because of the availability of electric power from the Chorrera del Guayabo. The photo shows a man operating machinery used in the production of cooking oil at the El Dorado plant in San Salvador.

Photo: Paul Sanche for WORLD BANK.

December 1956

~~#4~~
22-ES-22



NUMBER 200 "MORILLA"
ILLUSTRATION BOARD

30 x 40"



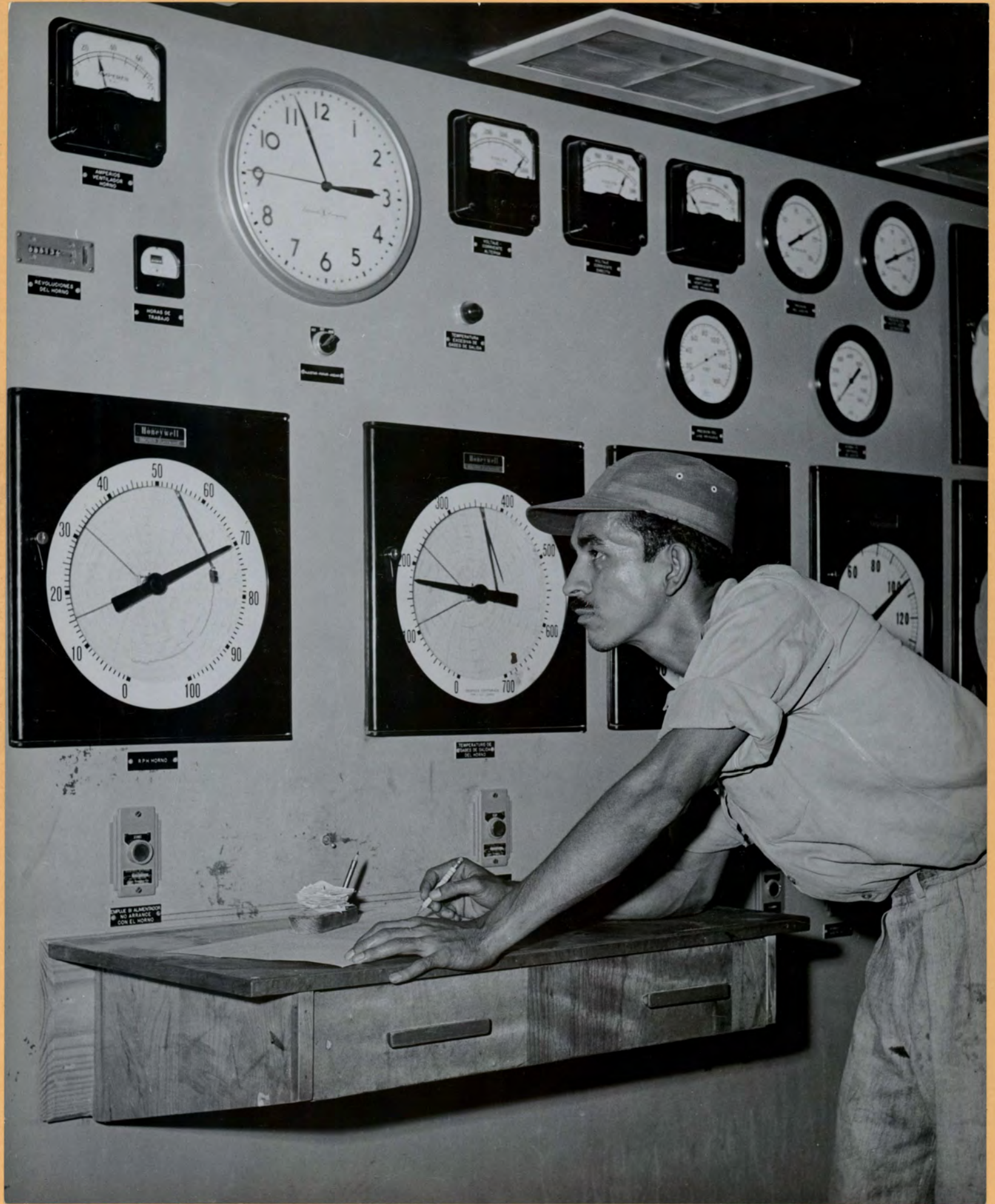
20 x 30"

SUPERFINE QUALITY

FOR INK, WASH, WATERCOLOR, OR PENCIL.

THE MORILLA COMPANY, LOS ANGELES, CALIF. NEW YORK

22-65-28



Inches 1 2 3 4 5 6 7 8
 Centimetres 1 2 3 4 5 6 7 8 9 10 11 12 13 14 15 16 17 18 19

KODAK Color Control Patches © The Tiffen Company, 2000

Kodak
 LICENSED PRODUCT

Blue Cyan Green Yellow Red Magenta White 3/Color Black



22-ES-24



Inches 1 2 3 4 5 6 7 8

Centimetres 1 2 3 4 5 6 7 8 9 10 11 12 13 14 15 16 17 18 19

KODAK Color Control Patches © The Tiffen Company, 2000

Kodak
LICENSED PRODUCT

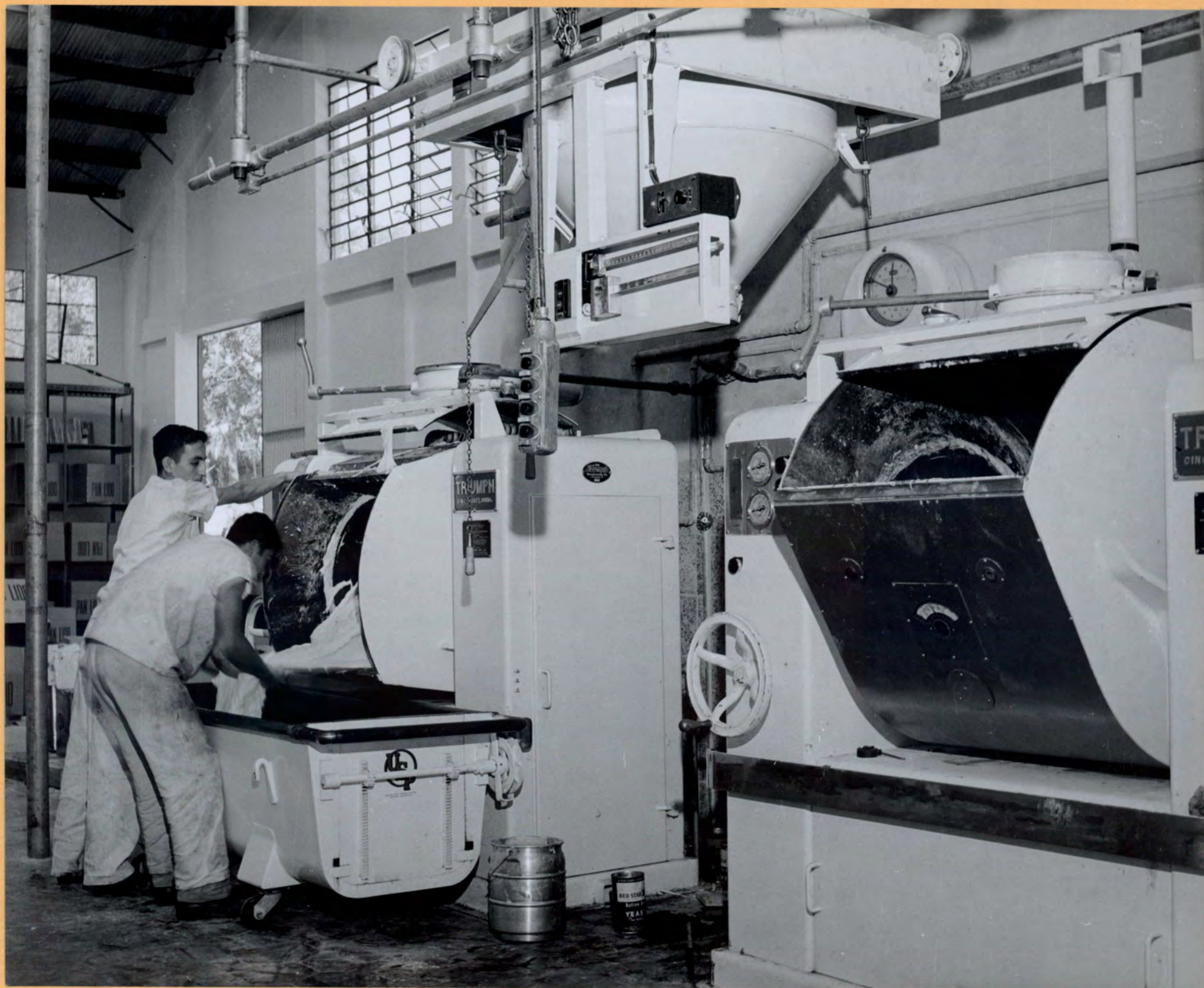
Blue Cyan Green Yellow Red Magenta White 3/Color Black



INTERNATIONAL BANK FOR RECONSTRUCTION AND DEVELOPMENT
PHOTO DISTRIBUTION

Publication	Date of Issue	Page Number	Publication	Date of Issue	Page Number
<p><u>INTERNATIONAL BANK FOR RECONSTRUCTION AND DEVELOPMENT</u> <u>Washington, D.C. 20433</u></p> <p>22-IS-24 The Rio Lempa Hydroelectric Project in El Salvador was partly financed by WORLD BANK funds. A large growth of industry was brought about because of the availability of electric power from the Cherrera del Guayabo. The photo shows a general view of the Pan Lido S.A. bakery in Pan. Lido, San Salvador.</p> <p>Photo: Paul Sanche for WORLD BANK. December 1956</p>			<p style="text-align: center;">IBRD / IDA AV/93 WBG ARCHIVES</p>		

22-55-25



Inches 1 2 3 4 5 6 7 8

Centimetres 1 2 3 4 5 6 7 8 9 10 11 12 13 14 15 16 17 18 19

KODAK Color Control Patches © The Tiffen Company, 2000

Kodak
LICENSED PRODUCT

Blue Cyan Green Yellow Red Magenta White 3/Color Black



Publication	Date of Issue	Page Number	Publication	Date of Issue	Page Number
<p><u>INTERNATIONAL BANK FOR RECONSTRUCTION AND DEVELOPMENT</u> <u>Washington, D.C. 20433</u></p> <p>22-ES-25 The Rio Lempa Hydroelectric Project in El Salvador was partly financed by WORLD BANK funds. A large growth of industry was brought about because of the availability of electric power from the Chorrera del Guayabo. The photo shows two men taking raw dough out of the machinery at the Pan Lido S.A. bakery in Pan Lido, San Salvador.</p> <p>Photo: Paul Sanche for WORLD BANK. December 1956</p>					





Inches 1 2 3 4 5 6 7 8

Centimetres 1 2 3 4 5 6 7 8 9 10 11 12 13 14 15 16 17 18 19

KODAK Color Control Patches © The Tiffen Company, 2000

Kodak
LICENSED PRODUCT

Blue Cyan Green Yellow Red Magenta White 3/Color Black



22-ES-27
PHOTO SERIES 'A'-24



Inches 1 2 3 4 5 6 7 8

Centimetres 1 2 3 4 5 6 7 8 9 10 11 12 13 14 15 16 17 18 19

KODAK Color Control Patches © The Tiffen Company, 2000

Kodak
LICENSED PRODUCT

Blue Cyan Green Yellow Red Magenta White 3/Color Black



22-55-28



Inches 1 2 3 4 5 6 7 8


Centimetres 1 2 3 4 5 6 7 8 9 10 11 12 13 14 15 16 17 18 19

KODAK Color Control Patches © The Tiffen Company, 2000

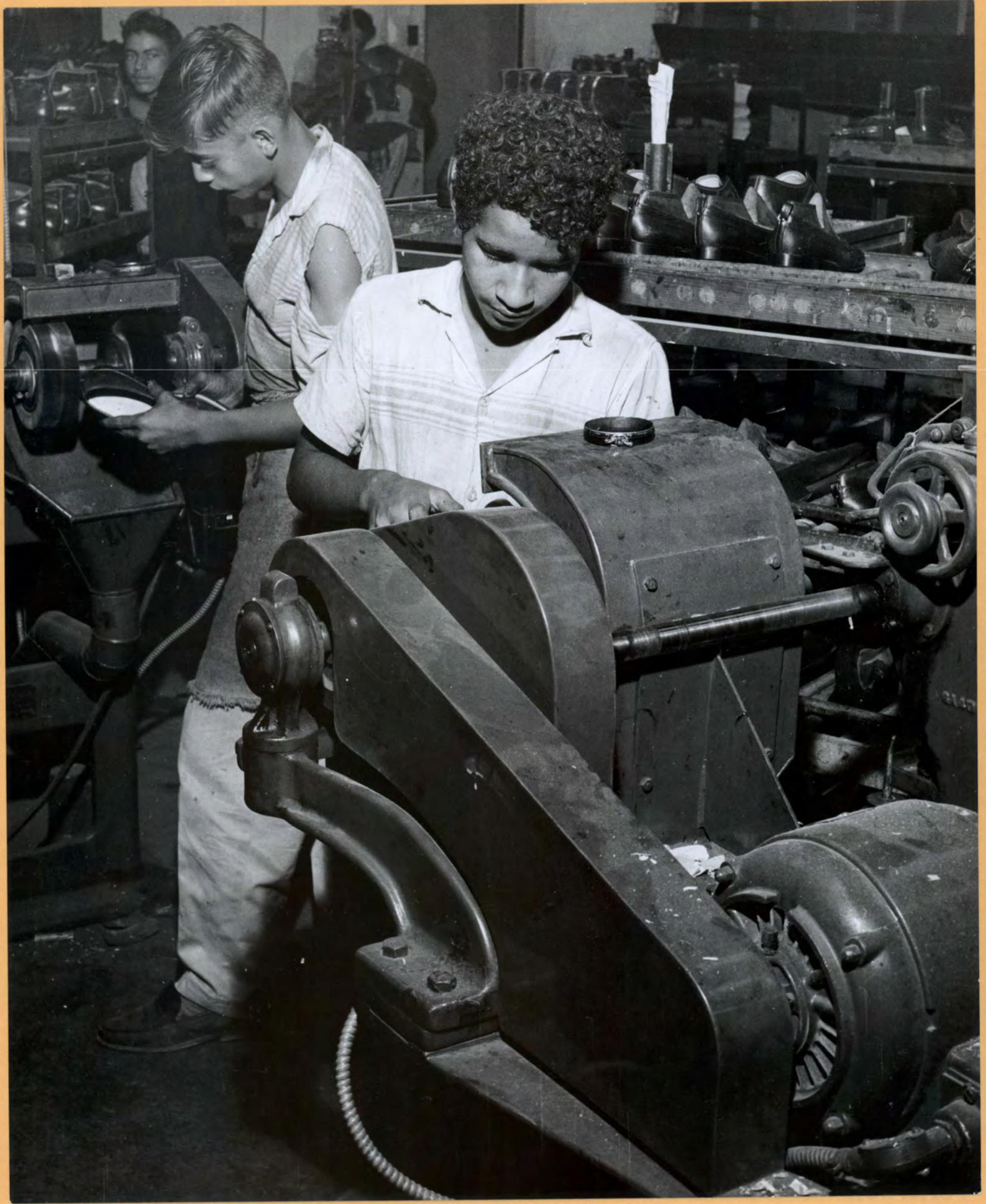
Kodak
LICENSED PRODUCT

Blue Cyan Green Yellow Red Magenta White 3/Color Black



Publication	Date of Issue	Page Number	Publication	Date of Issue	Page Number
<p><u>INTERNATIONAL BANK FOR RECONSTRUCTION AND DEVELOPMENT</u> <u>Washington, D.C. 20433</u></p> <p>22-ES-28 The Rio Lempa Hydroelectric Project in El Salvador was partly financed by WORLD BANK funds. A large growth of industry was brought about because of the availability of electric power from the Chorrera del Guayabo. This modern shoe factory = Fabrica de Zapatos ADOC in San Salvador - is one of the new plants that have come into operation since the increase in electric power in El Salvador.</p> <p>Photo: Paul Sanche for WORLD BANK. December 1956</p>					

22-55-29



Inches 1 2 3 4 5 6 7 8

Centimetres 1 2 3 4 5 6 7 8 9 10 11 12 13 14 15 16 17 18 19

KODAK Color Control Patches © The Tiffen Company, 2000

Kodak
LICENSED PRODUCT

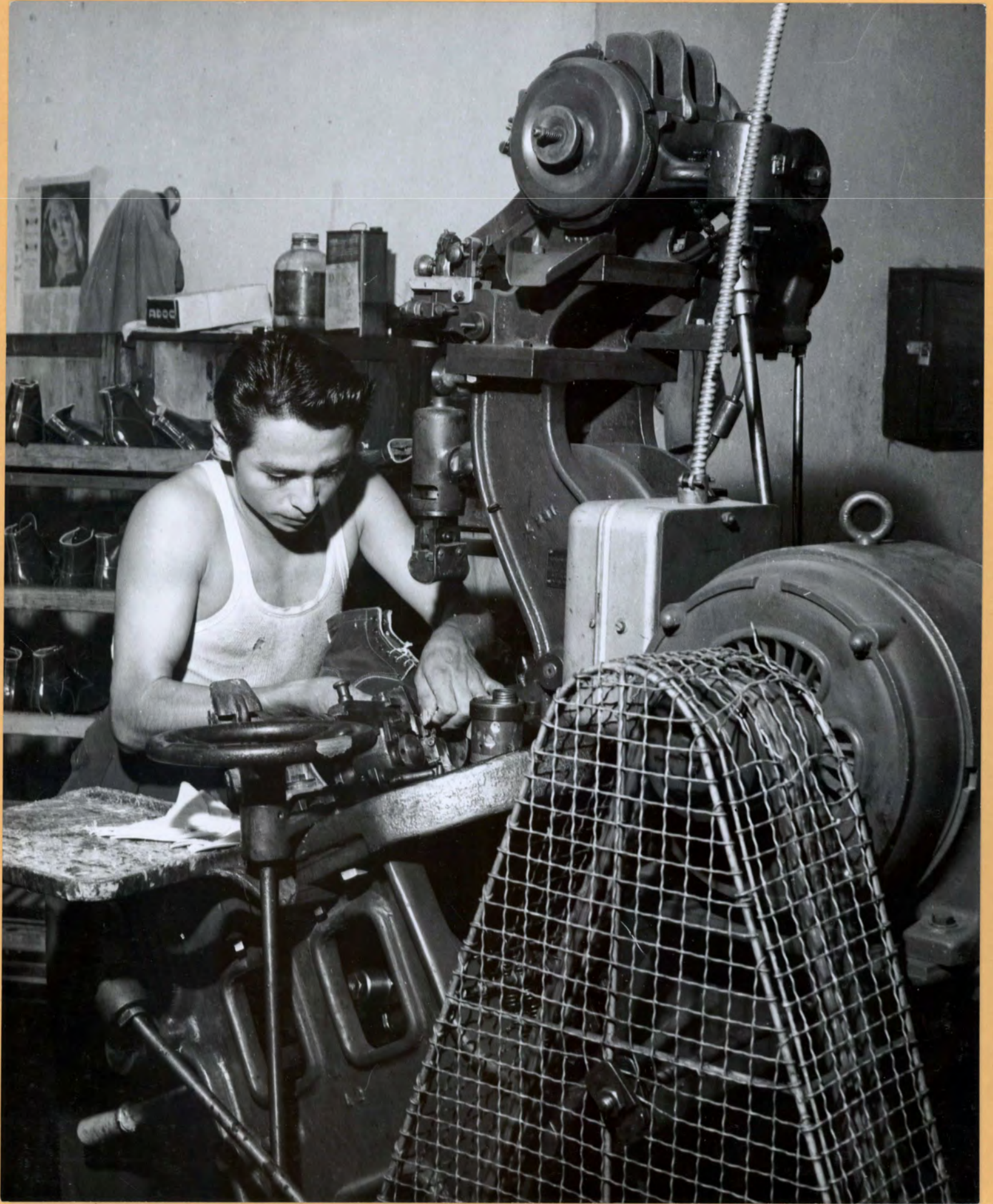
Blue Cyan Green Yellow Red Magenta White 3/Color Black



Publication	Date of Issue	Page Number	Publication	Date of Issue	Page Number
<p><u>INTERNATIONAL BANK FOR RECONSTRUCTION AND DEVELOPMENT</u> <u>Washington, D.C. 20433</u></p> <p>22-ES-29 The Rio Lempa Hydroelectric Project in El Salvador was partly financed by WORLD BANK funds. A large growth of industry was brought about because of the availability of electric power from the Chorrera del Guayabo. Here, two men are operating machinery used in the production of shoes in the Fabrica de Zapatos ADCC in San Salvador.</p> <p>Photo: Paul Sanche for WORLD BANK. December 1956</p>					



22-55-50



Inches 1 2 3 4 5 6 7 8


Centimetres 1 2 3 4 5 6 7 8 9 10 11 12 13 14 15 16 17 18 19

KODAK Color Control Patches © The Tiffen Company, 2000

Kodak
LICENSED PRODUCT

Blue Cyan Green Yellow Red Magenta White 3/Color Black



Publication	Date of Issue	Page Number	Publication	Date of Issue	Page Number
<p><u>INTERNATIONAL BANK FOR RECONSTRUCTION AND DEVELOPMENT</u> <u>Washington, D.C. 20433</u></p> <p>22-ES-30 The Rio Lempa Hydroelectric Project in El Salvador was partly financed by WORLD BANK funds. A large growth of industry was brought about because of the availability of electric power from the Chorrera del Guayabo. The photo shows a man operating machinery used in the production of shoes at the Fabrica de Calzado ADOC shoe factory in San Salvador.</p> <p>Photo: Paul Sanche for WORLD BANK. December 1956</p>			<p style="text-align: center;"></p>		



22-65-31

note angles of *[illegible]*

14 1/4"

22-65-31

14 1/2"

Inches 1 2 3 4 5 6 7 8

Centimetres 1 2 3 4 5 6 7 8 9 10 11 12 13 14 15 16 17 18 19

KODAK Color Control Patches © The Tiffen Company, 2000

Kodak
LICENSED PRODUCT

Blue Cyan Green Yellow Red Magenta White 3/Color Black



INTERNATIONAL BANK FOR RECONSTRUCTION AND DEVELOPMENT
Washington, D.C. 20433

22-ES-31 The Rio Lempa Hydroelectric Project in El Salvador was partly financed by WORLD BANK funds.

A large growth of industry was brought about because of the availability of electric power from the Chorrera del Guayabo. The photo shows an artisan at work in the production of staves at the Fabrica de Calzudo ABOC factory in San Salvador.

Photo: Paul Sanche for WORLD BANK.

December 1956



22-ES-



22-55-32



Inches 1 2 3 4 5 6 7 8
Centimetres 1 2 3 4 5 6 7 8 9 10 11 12 13 14 15 16 17 18 19 20

KODAK Color Control Patches © The Tiffen Company, 2000

Blue Cyan Green Yellow Red Magenta White 3/Color Black

Publication	Date of Issue	Page Number	Publication	Date of Issue	Page Number
<p><u>INTERNATIONAL BANK FOR RECONSTRUCTION AND DEVELOPMENT</u> <u>Washington, D.C. 20433</u></p> <p>22-ES-32 The Rio Lempa Hydroelectric Project in El Salvador was partly financed by WORLD BANK funds. A large growth of industry was brought about because of the availability of electric power from the Chorrera del Guayabo. Here, two men inspect some of the shoes at the shoe factory of the Fabrica de Calzado ADOC in San Salvador.</p> <p>Photo: Paul Sanche for WORLD BANK. December 1956</p>					



Withdrawn From Circulation

22-65-33



Inches 1 2 3 4 5 6 7 8

Centimetres 1 2 3 4 5 6 7 8 9 10 11 12 13 14 15 16 17 18 19

KODAK Color Control Patches © The Tiffen Company, 2000

Kodak
LICENSED PRODUCT

Blue Cyan Green Yellow Red Magenta White 3/Color Black



Publication	Date of Issue	Page Number	Publication	Date of Issue	Page Number
<p><u>INTERNATIONAL BANK FOR RECONSTRUCTION AND DEVELOPMENT</u> <u>Washington, D.C. 20433</u></p> <p>22-ES-33 The Rio Lempa Hydroelectric Project in El Salvador was partly financed by WORLD BANK funds. A large growth in industry was brought about because of the availability of electric power from the Chorrera del Guayabo. This picture shows the plant of Fabrica Eureka (Cement-Asbestos Roofing) at Ilopango.</p> <p>Photo: Paul Sanche for WORLD BANK. December 1956</p>			