



DECEMBER 2017

LISTENING TO TAJIKISTAN WELLBEING

Most Recent Round

Share Subj. Wellbeing of Respondent Decline in Most Recent Round	23%	L2TJK
Share Subj. Wellbeing of Respondent Improved in Most Recent Round	23%	L2TJK
Share Household Decline in Most Recent Round	23%	L2TJK
Share Household Improved in Most Recent Round	23%	L2TJK

Rounds Average

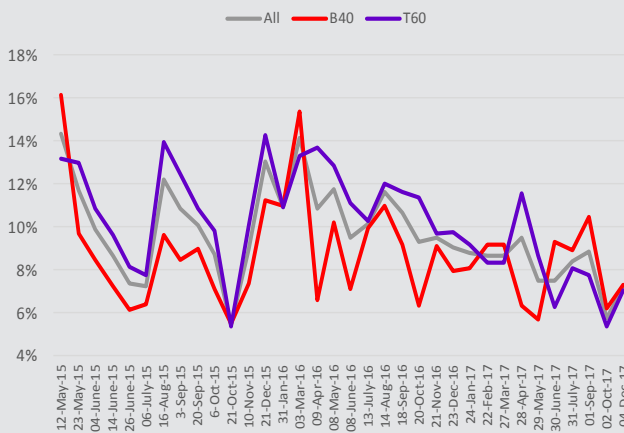
Average Subj. Wellbeing of Respondent Share Better off	17%	L2TJK
Average Subj. Wellbeing of Respondent Share Worse off	20%	L2TJK
Average Household Share Better off	17%	L2TJK
Average Household Share Worse off	19%	L2TJK

Source: Listening to Tajikistan from 12-May-15 to 04-Dec-17

Life Satisfaction

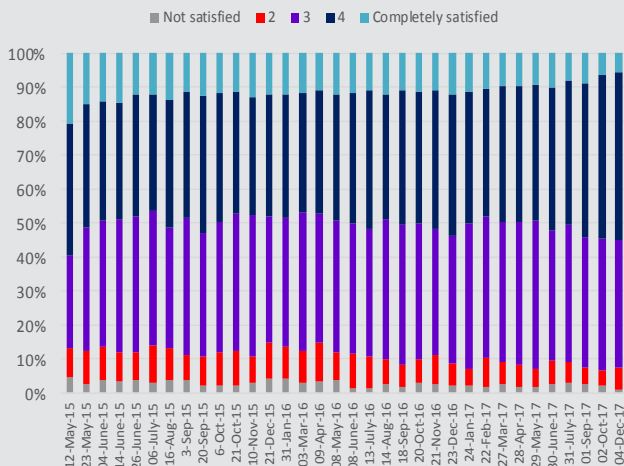
Share of HHs Selling Assets to Pay for Basic Needs

Source: Listening to Tajikistan



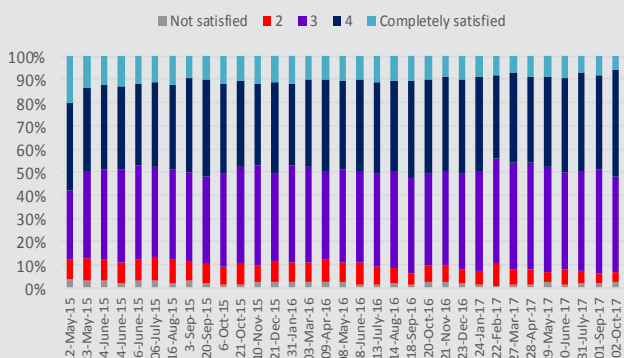
Personal Life Satisfaction

Source: Listening to Tajikistan



Household Life Satisfaction

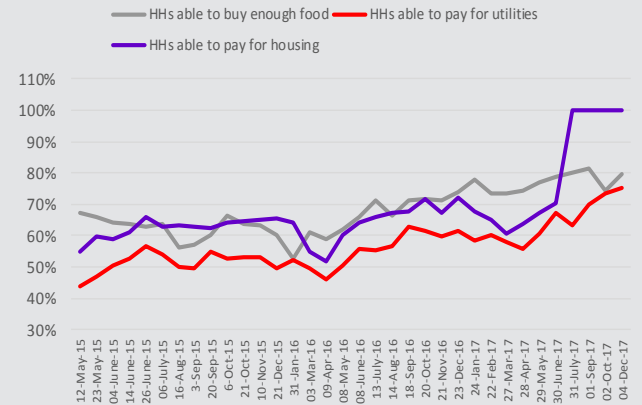
Source: Listening to Tajikistan



Basic Needs

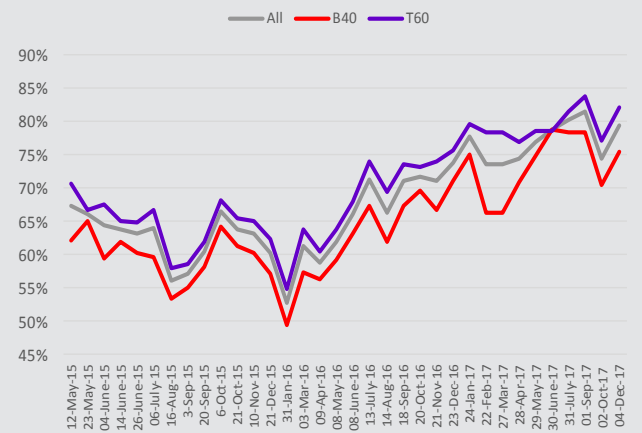
Share of HHs Able to Pay for Basic Needs

Source: Listening to Tajikistan



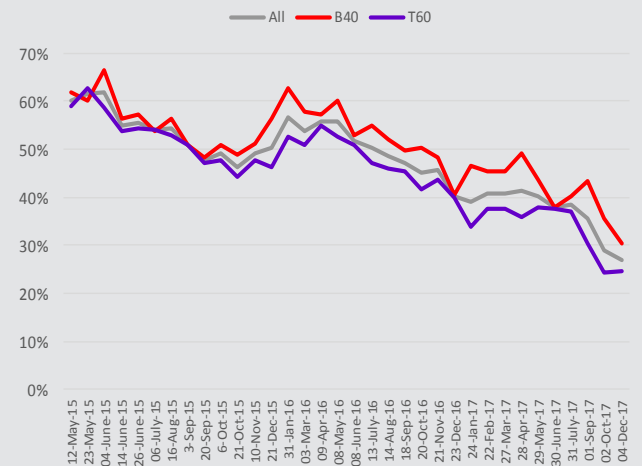
Share of HHs Able to Pay for Enough Food

Source: Listening to Tajikistan



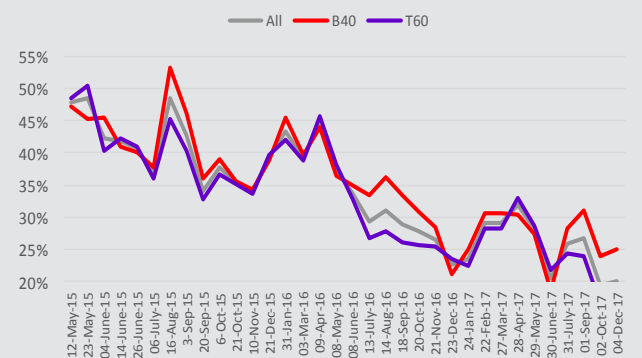
Share that Reduced Food Expenditure to Pay for Basic Needs

Source: Listening to Tajikistan



Share that Reduced Healthcare Expenses to Pay for Basic Needs

Source: Listening to Tajikistan



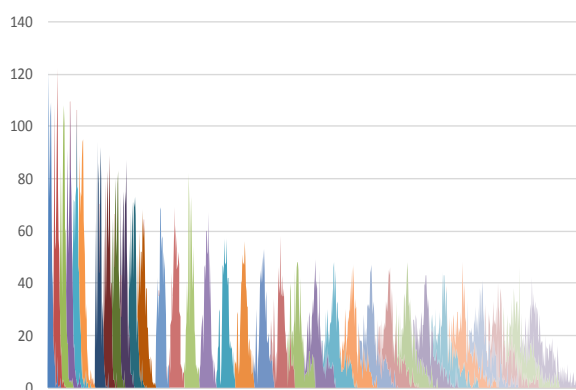
KEY INDICATORS		Subpop	12-May-15-04- June-15	14-June-15- 06-July-15	16-Aug-15 - 20- Sep-15	6-Oct-15 - 10-Nov-15	21-Dec-15 - 31-Jan-16	3-Mar-16 - 9-Apr-16	8-May-16 - 8- June-16	13-July-16 - 14-Aug-16	18-Sep-16 - 20-Oct-16	21-Nov-16 - 23-Dec-16	24-Jan-17 - 26-Mar-17	27-Apr-17 - 28-May-17	29-June-17 - 30-July-17	01-Sep-17 - 02-Oct-17	04-Dec-17
Household able to buy enough food		total	66%	64%	58%	64%	56%	60%	64%	69%	71%	72%	75%	76%	79%	78%	79%
Household able to buy enough food		urban	67%	63%	57%	61%	54%	56%	60%	65%	68%	67%	74%	73%	79%	75%	81%
Household able to buy enough food		rural	65%	64%	58%	66%	58%	62%	65%	70%	73%	75%	76%	77%	80%	79%	79%
Household able to buy enough food		b40	62%	61%	56%	62%	53%	57%	61%	65%	68%	69%	71%	73%	79%	74%	75%
Household able to buy enough food		t60	68%	66%	59%	66%	59%	62%	66%	72%	73%	75%	79%	78%	80%	80%	82%
Household unable to pay for utilities		total	53%	45%	49%	47%	49%	52%	47%	44%	38%	39%	40%	43%	38%	28%	25%
Household unable to pay for utilities		urban	56%	53%	57%	57%	59%	59%	58%	55%	43%	53%	53%	55%	47%	35%	30%
Household unable to pay for utilities		rural	52%	43%	45%	43%	45%	49%	42%	39%	35%	33%	35%	37%	34%	25%	22%
Household unable to pay for utilities		b40	57%	49%	51%	51%	53%	58%	50%	48%	39%	40%	43%	46%	39%	32%	28%
Household unable to pay for utilities		t60	50%	43%	47%	45%	46%	48%	45%	42%	37%	39%	39%	41%	37%	26%	23%
Comparison of household finances 10 days ago		total	2,01	1,93	3,10	3,14	2,99	3,01	3,16	3,28	3,27	3,19	3,19	3,24	3,31	3,35	3,28
Comparison of household finances 10 days ago		urban	2,06	1,99	3,00	3,04	2,90	2,91	3,02	3,15	3,14	3,08	3,07	3,11	3,13	3,23	3,21
Comparison of household finances 10 days ago		rural	1,99	1,90	3,14	3,17	3,03	3,04	3,22	3,34	3,33	3,24	3,25	3,30	3,40	3,40	3,32
Comparison of household finances 10 days ago		b40	1,99	1,93	3,12	3,15	2,98	3,01	3,24	3,31	3,27	3,25	3,20	3,25	3,31	3,31	3,27
Comparison of household finances 10 days ago		t60	2,01	1,93	3,09	3,13	3,00	3,01	3,12	3,26	3,27	3,15	3,19	3,23	3,31	3,37	3,29
Life satisfaction of household		total	3,53	3,45	3,49	3,46	3,42	3,42	3,47	3,49	3,50	3,52	3,48	3,49	3,48	3,52	3,52
Life satisfaction of household		urban	3,44	3,34	3,37	3,31	3,32	3,33	3,35	3,35	3,39	3,40	3,39	3,36	3,38	3,39	3,47
Life satisfaction of household		rural	3,57	3,50	3,53	3,52	3,46	3,45	3,52	3,56	3,55	3,57	3,54	3,54	3,53	3,59	3,55
Life satisfaction of household		b40	3,56	3,51	3,51	3,50	3,45	3,43	3,49	3,46	3,48	3,52	3,45	3,48	3,43	3,49	3,49
Life satisfaction of household		t60	3,51	3,41	3,47	3,43	3,40	3,41	3,46	3,52	3,52	3,52	3,53	3,49	3,52	3,54	3,54

Source: Listening to Tajikistan

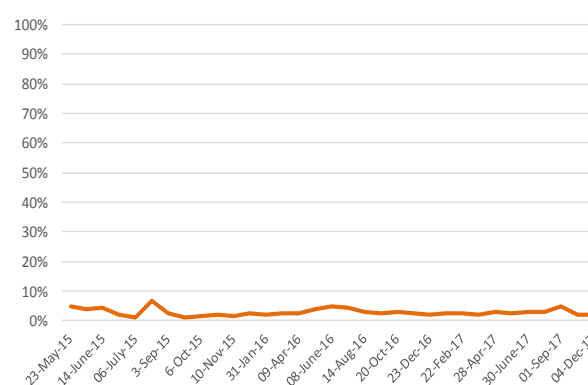
Data Description

The Poverty and Equity team of the World Bank launched the Listening-to-Tajikistan survey in 2015 to monitor the challenges faced by vulnerable households in the country. The survey instrument includes questions on a variety of themes, including income, employment, migration, wellbeing, and services. The sample includes 800 households which were drawn from a nationally representative face-to-face survey conducted in the spring of 2015. Participating households were initially interviewed in 10-day intervals, moving to two-week intervals following the sixth wave of data collection. Responses reported in this note are weighted for national representativeness and for non-response, and households that refused to participate (or otherwise drop out) were replaced with another household from the same primary sampling unit. The B40 and T60 classification for the L2T survey are defined with respect to the baseline round of the survey, and are not updated in each round.

Interviews Completed by Date and Round



Share of Households Replaced by Round



Reference: HH—Households
T60—Top 60%

L2TJK—Listening2Tajikistan
B40—Bottom 40%

F2F—Face-to-Face
Meta—Meta Data

ADDITIONAL INFO

The support of UK-DFID in the design phase of this instrument is gratefully acknowledged.
Project Webpage: <http://www.worldbank.org/en/country/tajikistan/brief/listening2tajikistan>
QUESTIONS?
Contact Joao Pedro Wagner De Azavedo (jazevedo@worldbank.org), William Hutchins Seitz (wseitz@worldbank.org), Alisher Rajabov (arajabov@worldbank.org)



WORLD BANK GROUP
Poverty & Equity