

Jan-18



# LISTENING TO TAJIKISTAN MIGRATION

## Migration

Share of Households with Migrants Q1 2015	16%	F2F
Share of Households with Migrants in Latest Round	26%	L2TJK
Share of Migrants that are Head of Household	11%	L2TJK

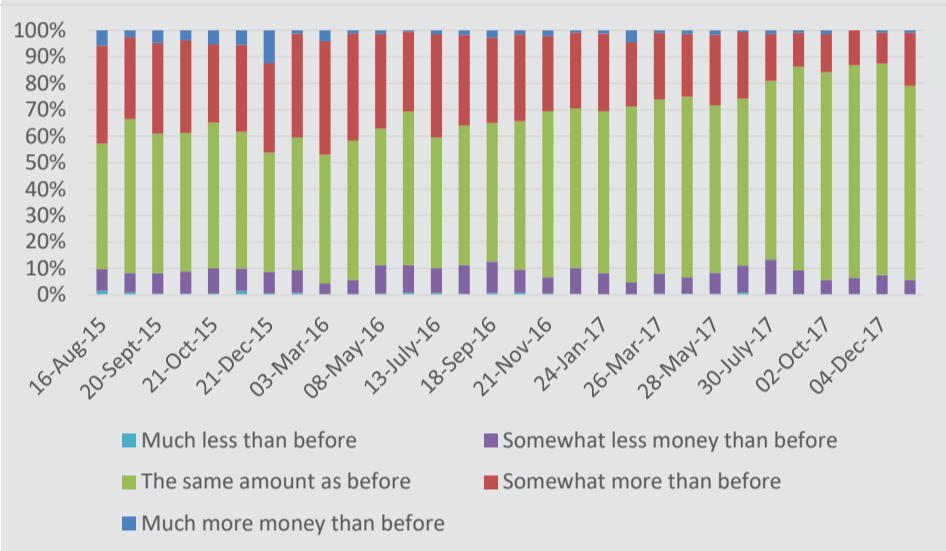
## Remittances

Total Average value of remittances (TJS)	1033	L2TJK
Bottom 40	1013	L2TJK
Top 60	1,053	L2TJK
Overall Average Monthly Share of HHs Receiving Remittance(s)	31%	L2TJK

## Remittances

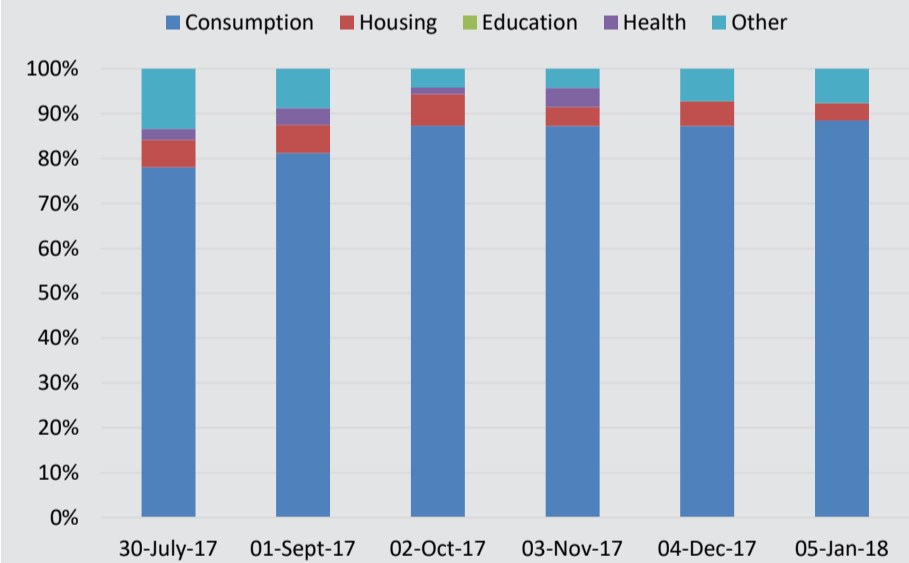
### Subjective Assessment of Remittance Value

Source: Listening to Tajikistan



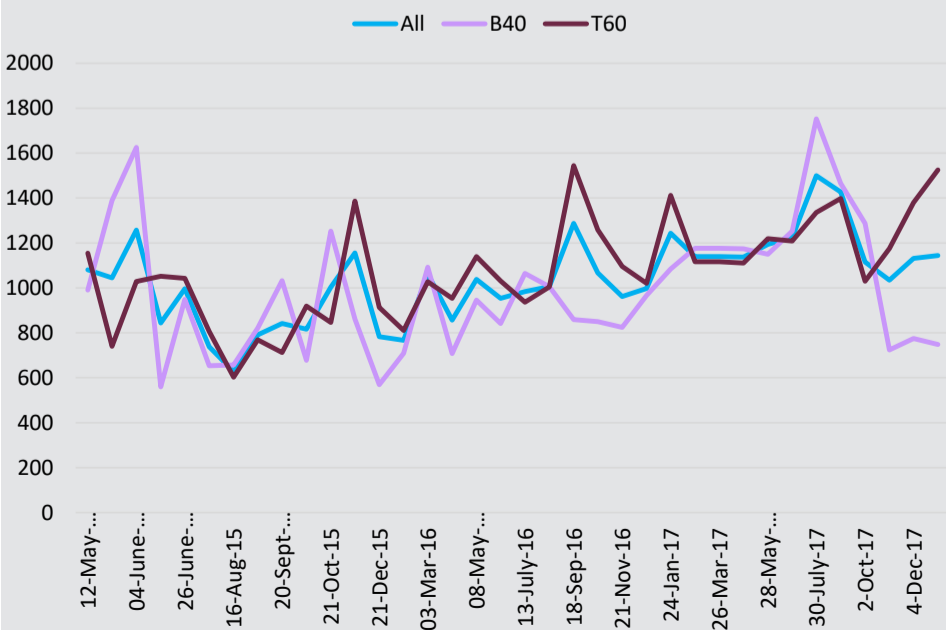
### Household Use of Remittances

Source: Listening to Tajikistan



### Household Average Real Value of Remittances

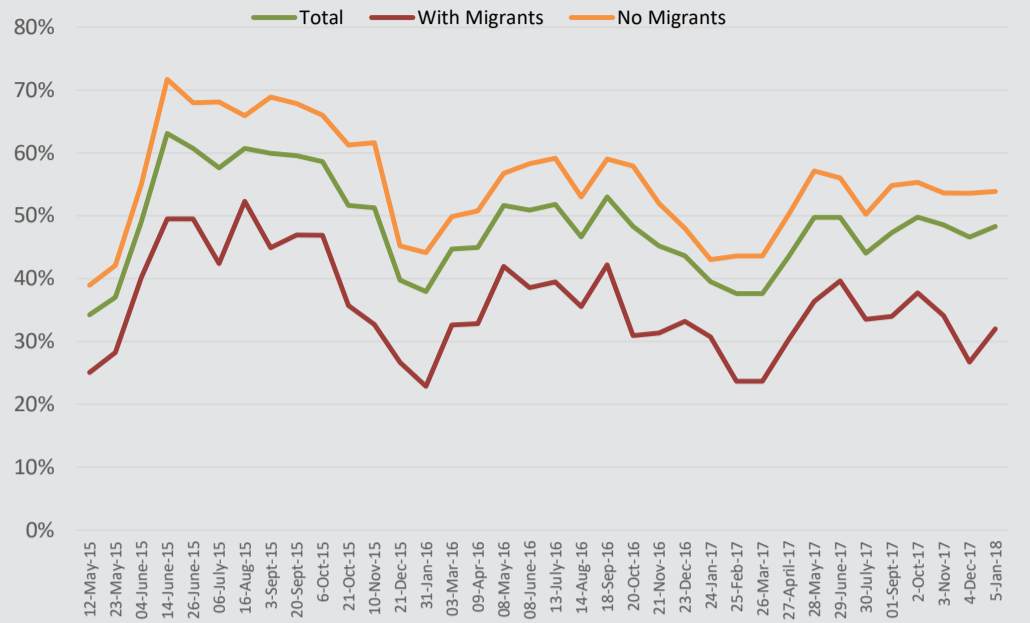
Source: Listening to Tajikistan



## Migrants

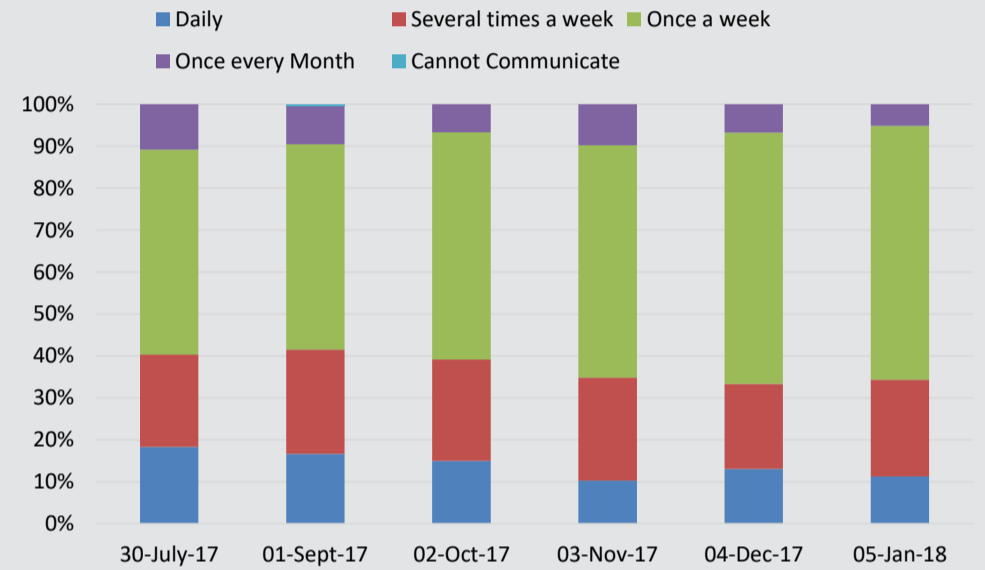
### Household Head Currently Working

Source: Listening to Tajikistan



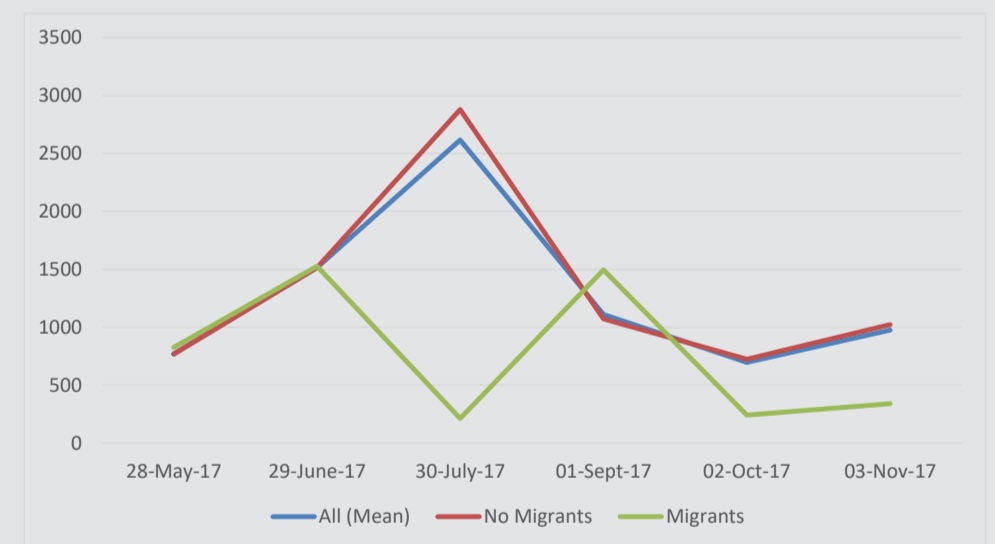
### Frequency of Communication with Migrant

Source: Listening to Tajikistan



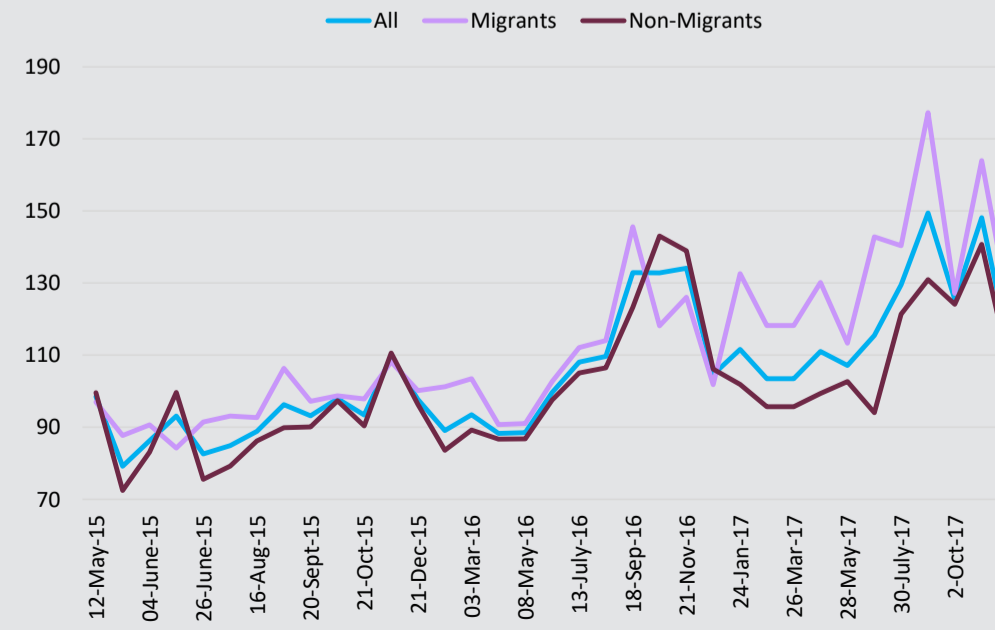
### Amount Saved (in Somoni)

Source: Listening to Tajikistan



### Average Real PC Income: by HHS with and without Migrants

Source: Listening to Tajikistan



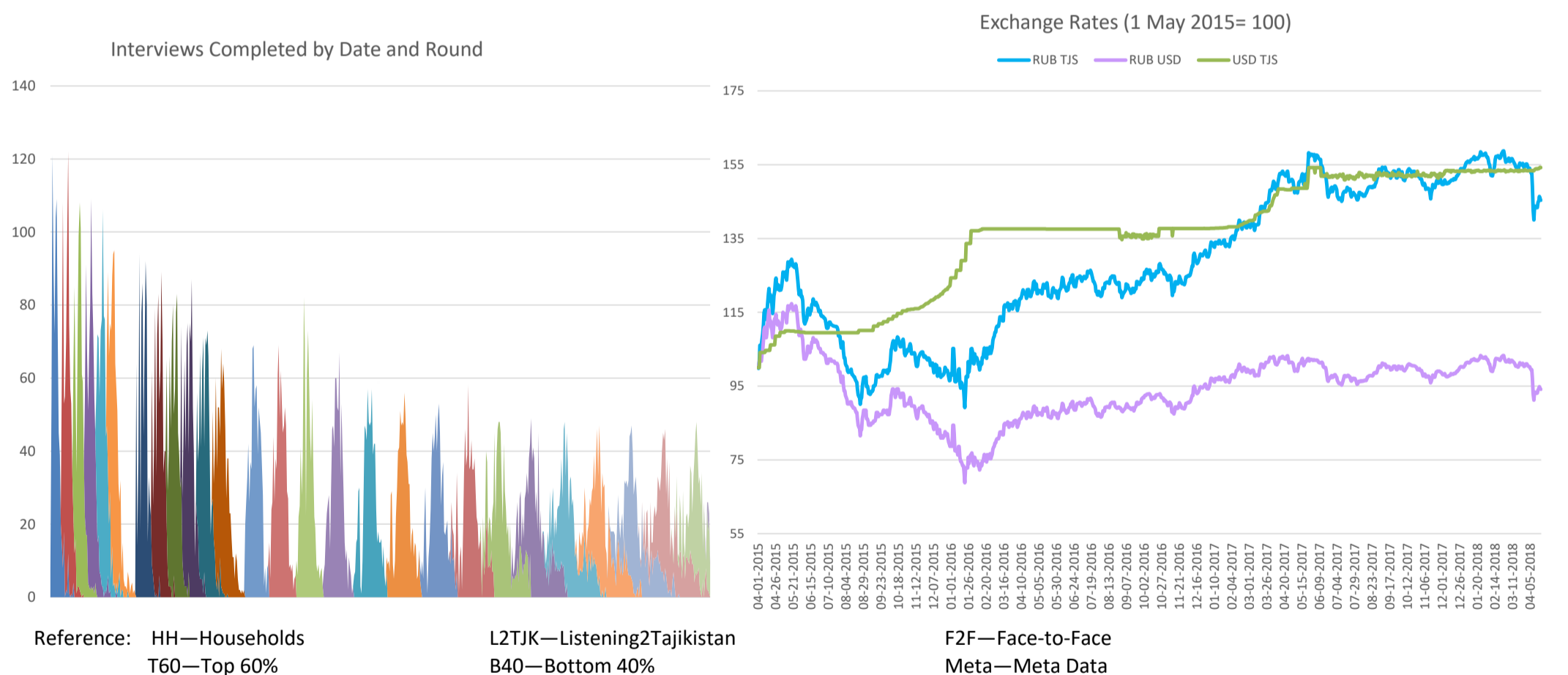
KEY INDICATORS

Variable	Subpop	12-May-15-04-14-June-15-06-July-15	16-Aug-15 - 20-Sept-15	6-Oct-15 - 10-Nov-15	21-Dec-15 - 31-Jan-16	3-Mar-16 - 9-Apr-16	8-May-16 - 8-June-16	13-July-16 - 14-Aug-16	18-Sep-16 - 20-Oct-16	21-Nov-16 - 23-Dec-16	24-Jan-17 - 26-Mar-17	27-Apr-17 - 28-May-17	29-June-17 - 30-July-17	01-Sept-17 - 3-Nov-2017	4-Dec-2017 - 5-Jan-2018	
Real remittance income (Somoni)	total	1257.7	737.6	753.6	991.7	774.3	959.4	995.9	994.0	1176.5	979.3	1174.1	1165.7	1362.3	1192.1	1137.7
Real remittance income (Somoni)	urban	1232.0	892.4	769.2	1273.4	612.0	899.9	769.8	910.1	1045.9	908.5	1301.7	1180.8	1466.8	1198.9	833.6
Real remittance income (Somoni)	rural	1265.0	710.0	754.1	884.2	819.6	968.8	1053.9	1012.3	1201.6	999.5	1143.8	1160.1	1340.3	1186.8	1234.7
Real remittance income (Somoni)	b40	1625.5	653.7	836.5	930.6	638.9	900.1	893.5	1035.1	854.4	894.9	1145.7	1162.0	1502.4	1158.8	761.0
Real remittance income (Somoni)	t60	1028.3	805.9	694.6	1050.7	861.6	990.4	1085.1	970.4	1401.1	1058.0	1215.1	1164.8	1271.9	1201.2	1452.5
Received any remittances in past 10 days	total	10%	13%	15%	14%	9%	9%	13%	15%	14%	11%	10%	12%	14%	10%	7%
Received any remittances in past 10 days	urban	8%	7%	12%	12%	7%	6%	10%	8%	8%	6%	7%	9%	11%	10%	5%
Received any remittances in past 10 days	rural	11%	16%	16%	15%	10%	10%	14%	18%	17%	13%	11%	13%	16%	10%	8%
Received any remittances in past 10 days	b40	9%	15%	16%	15%	9%	10%	15%	14%	15%	13%	11%	12%	13%	9%	8%
Received any remittances in past 10 days	t60	10%	12%	14%	14%	9%	8%	11%	16%	14%	10%	10%	12%	15%	10%	7%
At least one migrant in household	total	12%	13%	15%	12%	19%	23%	15%	13%	10%	12%	17%	16%	11%	5%	6%
At least one migrant in household	urban	12%	19%	16%	16%	17%	25%	18%	17%	14%	14%	16%	16%	14%	6%	7%
At least one migrant in household	rural	12%	10%	14%	11%	19%	23%	14%	12%	8%	11%	18%	16%	9%	5%	5%
At least one migrant in household	b40	13%	13%	15%	11%	18%	21%	13%	13%	8%	12%	17%	13%	10%	6%	7%
At least one migrant in household	t60	12%	12%	14%	13%	19%	25%	17%	14%	11%	12%	17%	17%	11%	5%	5%
<b>Current Migrants</b>																
Age		31.59	31.43	32.29	31.69	30.75	31.03	30.76	31.49	30.52	29.60	29.3	30.13	29.51	28.1	27.5
Married		59%	62%	61%	60%	53%	52%	55%	58%	55%	51%	50%	52%	53%	44%	44%
Head of Household		19%	19%	21%	20%	15%	17%	19%	21%	18%	13%	13%	16%	17%	11%	9%
Employed in Tajikistan at Baseline		73%	69%	65%	66%	67%	63%	60%	56%	52%	53%	55%	54%	53%	52%	50%
Out of Labor Force in Tajikistan at Baseline		18%	21%	22%	23%	20%	22%	23%	26%	29%	27%	23%	24%	25%	23%	24%

Source: Listening to Tajikistan

Data Description

The Poverty and Equity team of the World Bank launched the Listening-to-Tajikistan survey in 2015 to monitor the challenges faced by vulnerable households in the country. The survey instrument includes questions on a variety of themes, including income, employment, migration, wellbeing, and services. The sample includes 800 households which were drawn from a nationally representative face-to-face survey conducted in the spring of 2015. Participating households were initially interviewed in 10-day intervals, moving to two-week intervals following the sixth wave of data collection. Responses reported in this note are weighted for national representativeness and for non-response, and households that refused to participate (or otherwise drop out) were replaced with another household from the same primary sampling unit. The B40 and T60 classification for the L2T survey are defined with respect to the baseline round of the survey, and are not updated in each round.



**WORLD BANK GROUP**  
Poverty & Equity

**ADDITIONAL INFO**

The support of JICA in the design phase of this instrument is gratefully acknowledged.  
Project Webpage: <http://www.worldbank.org/en/country/tajikistan/brief/listening2tajikistan>

**QUESTIONS?**  
Contact Joao Pedro Wagner De Azavedo ([jazevedo@worldbank.org](mailto:jazevedo@worldbank.org)), William Hutchins Seitz ([wseitz@worldbank.org](mailto:wseitz@worldbank.org)), Alisher Rajabov ([arajabov@worldbank.org](mailto:arajabov@worldbank.org))

