



DECEMBER 2017

LISTENING TO TAJIKISTAN SERVICES

Water

If Have Water Outage, Average Share of Days (last round) 53% L2TJK

Fewer Water Disruptions than Previous Most Recent Round 9% L2TJK

More Water Disruptions than Previous Most Recent Round 10% L2TJK

Electricity

If Have Electricity Outage, Average Share of Days (last round) 33% L2TJK

Share of Households with Electricity Outage (last round) 23% L2TJK

Average Number of Hours Electricity Disruption (last round) 6,01 L2TJK

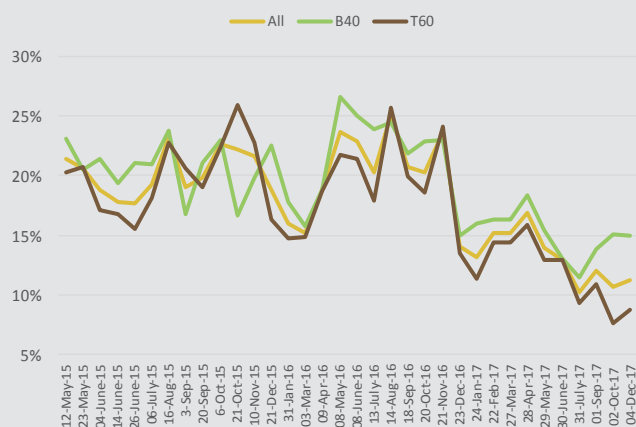
Source: Listening to Tajikistan from 12-May-15 to 04-Dec-17

* - Outages are defined as any disruption to the normal service received by the household. If a household is not connected to electricity, or the household uses a separate water supply that is undisrupted for the period, no outage is recorded.

Water

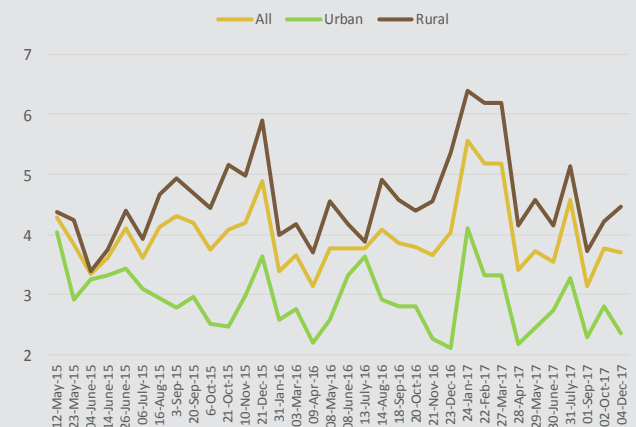
Share of Households with Water Disruptions over the Past 10 Days*

Source: Listening to Tajikistan. Note: Including Households not connected to municipal water system.



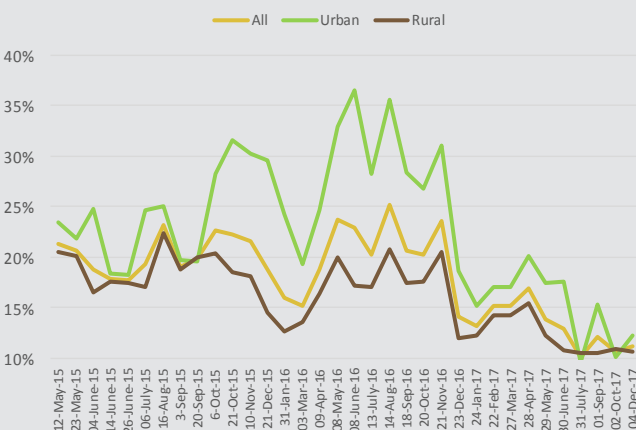
Days of Water Disruptions over the Past 10 Days*

Source: Listening to Tajikistan. Note: Including Households not connected to municipal water system.



Share of Households with Water Disruptions over the Past 10 Days*

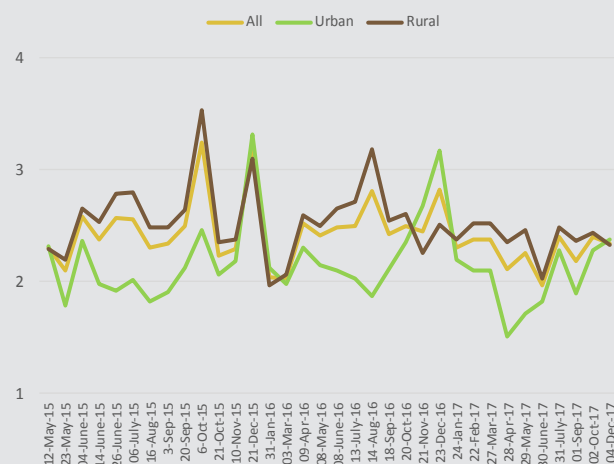
Source: Listening to Tajikistan. Note: Including Households not connected to municipal water system.



Electricity

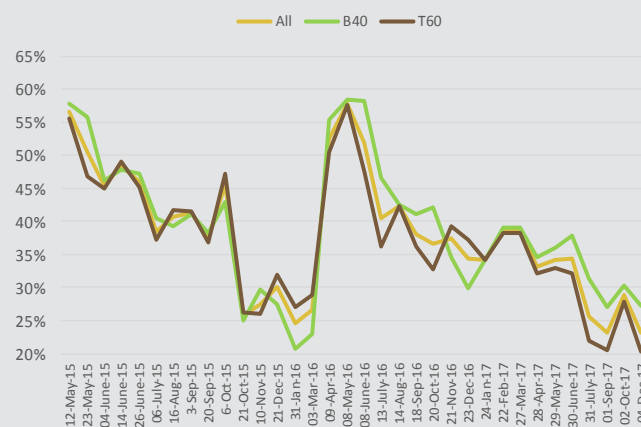
Days of Electricity Disruptions over the Past 10 Days*

Source: Listening to Tajikistan. Note: Including Households not connected to the grid.



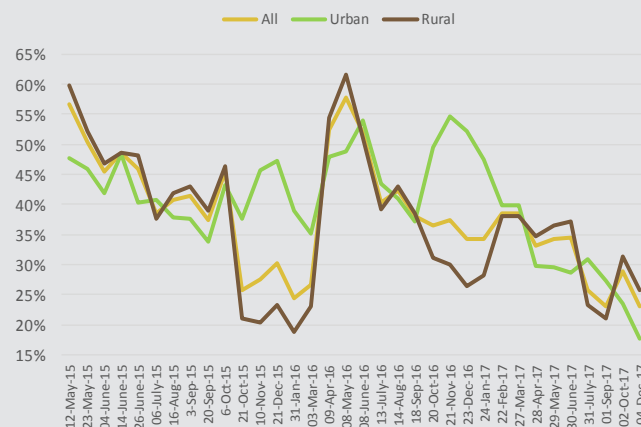
Share of Households with Electricity Disruptions over the Past 10 Days*

Source: Listening to Tajikistan. Note: Including Households not connected to the grid.



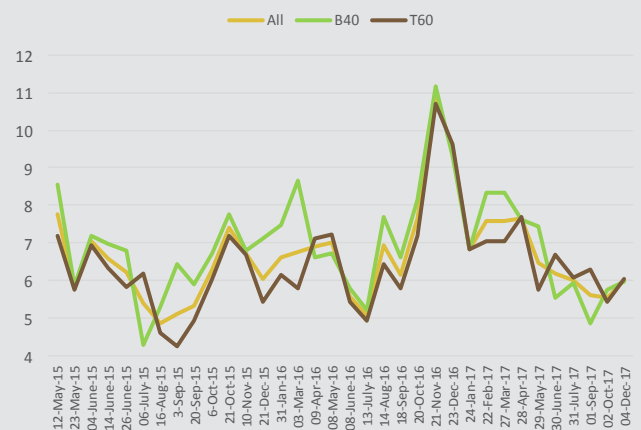
Share of Households with Electricity Disruptions over the Past 10 Days*

Source: Listening to Tajikistan. Note: Including Households not connected to the grid.



Hours of Average Electricity Disruptions over the Past 10 Days*

Source: Listening to Tajikistan. Note: Including Households not connected to the grid.



KEY INDICATORS																
Variable	Subpop	12-May-15- 04-June-15	14-June-15- 06-July-15	16-Aug-15- 20-Sep-15	6-Oct-15- 10-Nov-15	21-Dec-15-31- Jan-16	3-Mar-16- 9-Apr-16	8-May-16- 8-June-16	13-July-16- 14-Aug-16	18-Sep-16- 20-Oct-16	21-Nov-16- 23-Dec-16	24-Jan-17- 26-Mar-17	27-Apr-17- 28-May-17	29-June-17- 30-July-17	01-Sep-17- 02-Oct-17	04-Dec-17
Any water disruption in past 10 days	total	20%	18%	21%	22%	17%	17%	23%	23%	20%	19%	15%	15%	12%	11%	11%
Any water disruption in past 10 days	urban	23%	20%	21%	30%	27%	22%	35%	32%	28%	25%	16%	19%	14%	13%	12%
Any water disruption in past 10 days	rural	19%	17%	20%	19%	14%	15%	19%	19%	18%	16%	14%	14%	11%	11%	11%
Any water disruption in past 10 days	b40	22%	20%	21%	20%	20%	17%	26%	24%	22%	19%	16%	17%	12%	14%	15%
Any water disruption in past 10 days	t60	19%	17%	21%	24%	16%	17%	22%	22%	19%	19%	13%	14%	11%	9%	9%
Days on which at least 1 disruption in past 10 days	total	3,82	3,78	4,21	4,01	4,13	3,40	3,77	3,93	3,82	3,84	5,31	3,57	4,06	3,45	3,70
Days on which at least 1 disruption in past 10 days	urban	3,40	3,28	2,89	2,65	3,10	2,48	2,95	3,27	2,81	2,19	3,58	2,32	3,01	2,55	2,36
Days on which at least 1 disruption in past 10 days	rural	4,00	4,02	4,76	4,86	4,94	3,94	4,37	4,40	4,49	4,96	6,25	4,37	4,65	3,97	4,46
Days on which at least 1 disruption in past 10 days	b40	3,99	4,12	4,09	4,31	3,79	3,54	3,70	4,32	4,17	4,17	5,71	3,12	4,30	3,17	3,65
Any electricity outage in past 10 days	total	51%	44%	40%	33%	27%	40%	55%	41%	37%	36%	37%	34%	30%	26%	23%
Any electricity outage in past 10 days	urban	45%	43%	36%	42%	43%	41%	51%	42%	43%	53%	42%	30%	30%	25%	18%
Any electricity outage in past 10 days	rural	53%	45%	41%	29%	21%	39%	56%	41%	35%	28%	35%	36%	30%	26%	26%
Any electricity outage in past 10 days	b40	53%	45%	40%	33%	24%	39%	58%	45%	42%	32%	38%	35%	35%	29%	27%
Any electricity outage in past 10 days	t60	49%	44%	40%	33%	29%	40%	53%	39%	34%	38%	37%	33%	27%	24%	20%
Days on which at least 1 electricity outage	total	2,32	2,50	2,38	2,58	2,62	2,27	2,44	2,65	2,46	2,63	2,35	2,18	2,19	2,28	2,34
Days on which at least 1 electricity outage	urban	2,15	1,97	1,95	2,23	2,72	2,14	2,12	1,95	2,23	2,92	2,13	1,61	2,05	2,08	2,37
Days on which at least 1 electricity outage	rural	2,38	2,70	2,53	2,75	2,53	2,33	2,57	2,94	2,57	2,38	2,47	2,41	2,25	2,40	2,32
Days on which at least 1 electricity outage	b40	2,50	2,52	2,26	2,43	2,51	2,31	2,31	2,75	2,42	2,34	2,38	2,11	2,20	2,37	2,42
Days on which at least 1 electricity outage	t60	2,19	2,48	2,46	2,69	2,67	2,26	2,54	2,60	2,49	2,79	2,33	2,24	2,18	2,21	2,26
	Total															
Share wood or coal heating		78%														
Share Without Indoor Toilet		32%														

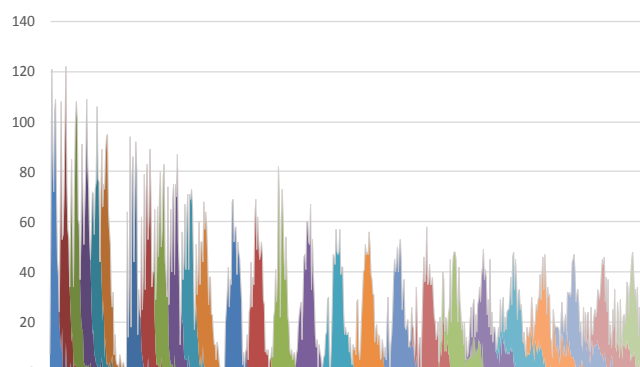
Source: Listening to Tajikistan

* - Outages are defined as any disruption to the normal service received by the household. If a household is not connected to electricity, or the household uses a separate water supply that is undisrupted for the period, no outage is recorded.

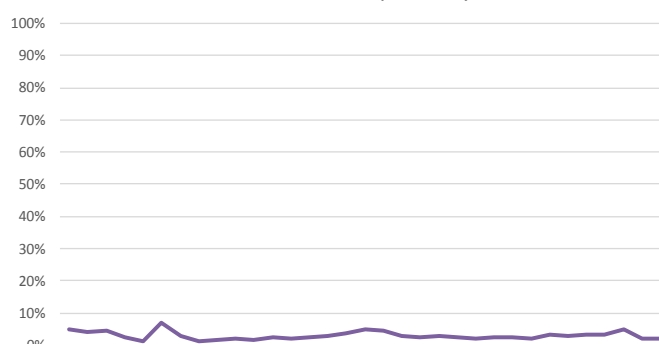
Data Description

The Poverty and Equity team of the World Bank launched the Listening-to-Tajikistan survey in 2015 to monitor the challenges faced by vulnerable households in the country. The survey instrument includes questions on a variety of themes, including income, employment, migration, wellbeing, and services. The sample includes 800 households which were drawn from a nationally representative face-to-face survey conducted in the spring of 2015. Participating households were initially interviewed in 10-day intervals, moving to two-week intervals following the sixth wave of data collection. Responses reported in this note are weighted for national representativeness and for non-response, and households that refused to participate (or otherwise drop out) were replaced with another household from the same primary sampling unit. The B40 and T60 classification for the L2T survey are defined with respect to the baseline round of the survey, and are not updated in each round.

Interviews Completed by Date and Round



Share of Households Replaced by Round



Reference: HH—Households
T60—Top 60%

L2TJK—Listening2Tajikistan
B40—Bottom 40%

F2F—Face-to-Face
Meta—Meta Data

ADDITIONAL INFO

The support of UK-DFID in the design phase of this instrument is gratefully acknowledged.
Project Webpage: <http://www.worldbank.org/en/country/tajikistan/brief/listening2tajikistan>

QUESTIONS?

Contact Joao Pedro Wagner De Azavedo (jazevedo@worldbank.org), William Hutchins Seitz (wseitz@worldbank.org), Alisher Rajabov (arajabov@worldbank.org)



WORLD BANK GROUP
Poverty & Equity