



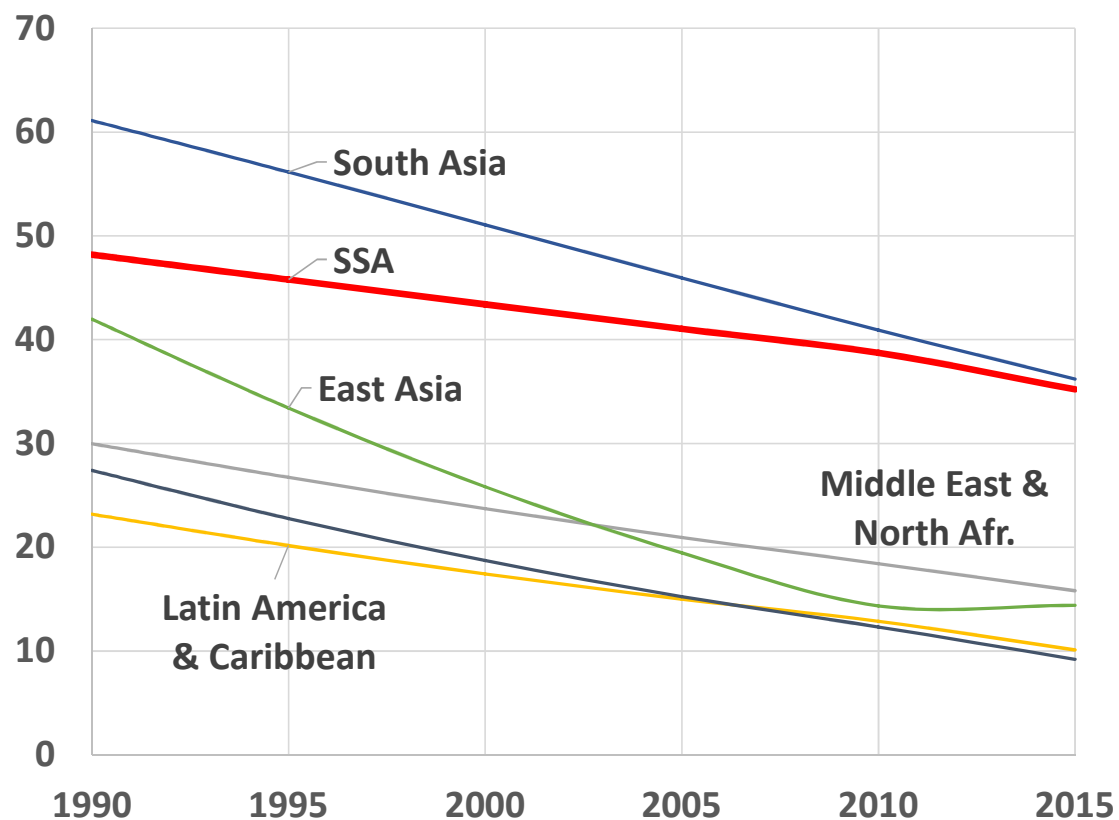
Early Years Nutrition

a Foundation for Human Capital Investment

Magnus Lindelow, World Bank
October 3, 2018



▶ CHRONIC MALNUTRITION A HAS BEEN SLOW TO DECLINE IN AFRICA



155 million children under 5
are stunted globally

of which

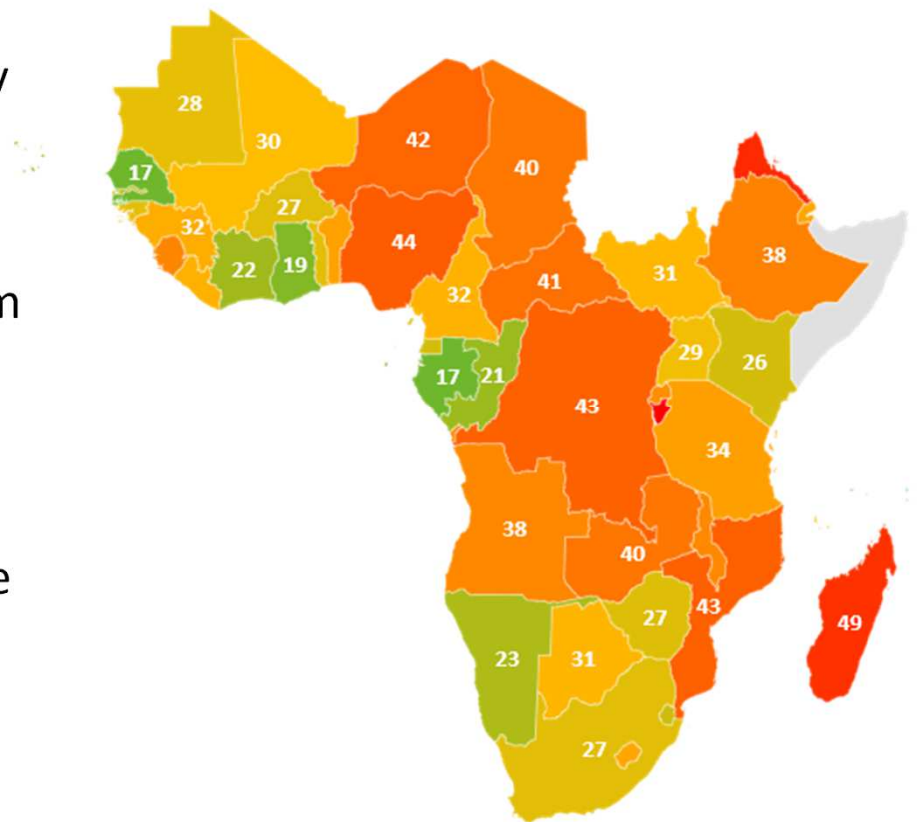
59 million in SSA

an **increase of 14 million**
since 1990

due to **modest progress** and
high fertility

STUNTING IS A PERVASIVE PROBLEM ACROSS THE REGION

- Many countries in the region with stubbornly high levels of stunting
- An “invisible” problem – often goes unrecognized where short stature is the norm
- Limited awareness of economic impacts of stunting among population and leaders
- Health systems still oriented to address acute malnutrition
- Low coverage and convergence of interventions across sectors



STUNTING HAS PROFOUND SOCIAL AND ECONOMIC CONSEQUENCES

Associated with increased morbidity and mortality and reduced neurodevelopmental and cognitive function
Compounded by deficits in early learning and stimulation



SCHOOLING

Early nutrition programs can increase school completion by one year



EARNINGS

Early nutrition programs can raise adult wages by 5-50%



POVERTY

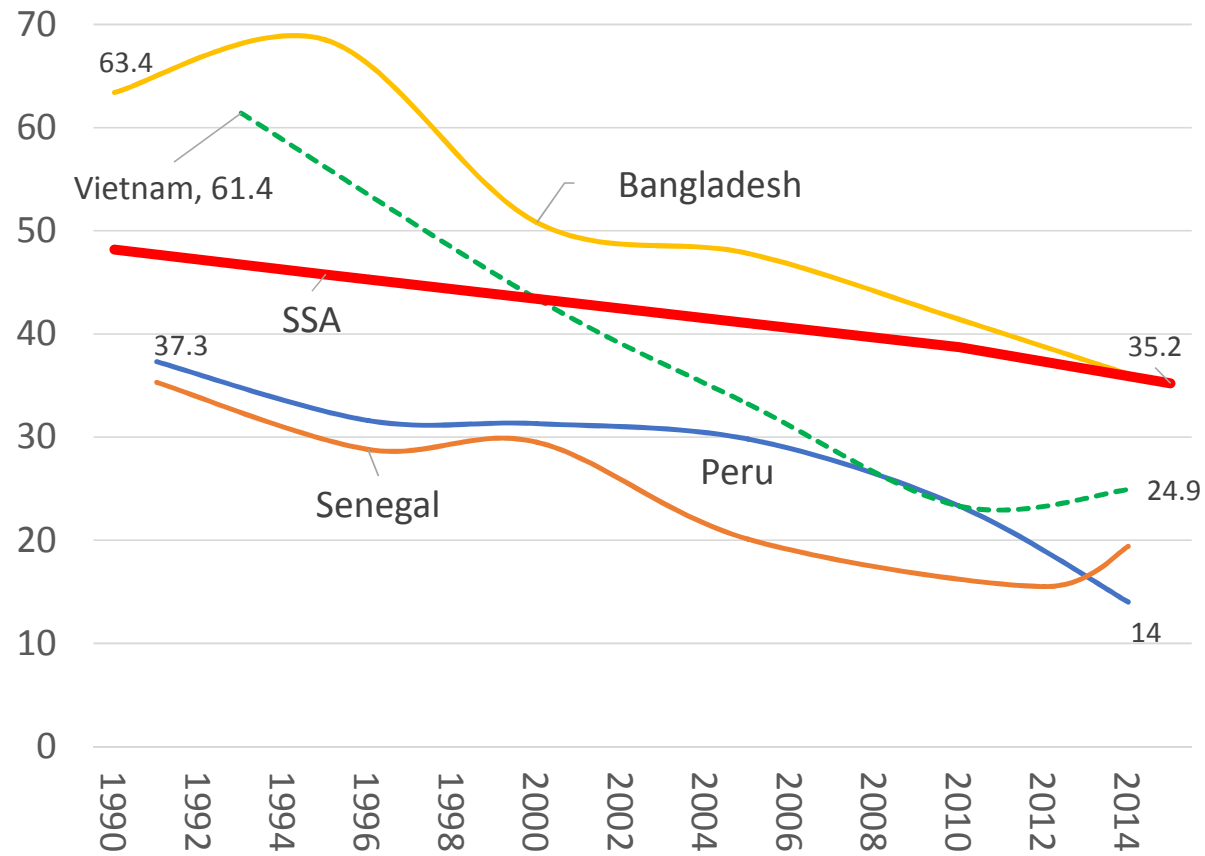
Children who escape stunting are 33% more likely to escape poverty as adults



ECONOMY

Reductions in stunting can increase GDP by 4-11% in Asia & Africa

RAPID PROGRESS IS POSSIBLE



KEY ELEMENTS OF SUCCESS



**Razor-sharp
focus on
stunting and
ECD**

- **Commitment at the highest levels**
- **Co-located investments across sectors**
- **Strong management & focus on results**

**Quality service
delivery
mechanisms**

- **Institutional capacity to deliver**
- **Evidence-based scale-up**
- **Monitoring and evaluation**

**Financing for
scale-up**

- **Leveraging domestic budgets**
- **Coordinated donor support**

▶ DELIVERING RESULTS REQUIRES ACTIONS ACROSS MANY SECTORS

CHILDREN REACH THEIR FULL POTENTIAL

(with the physical, cognitive & socioemotional capacities to learn, earn, innovate and compete)

Nutrition interventions & broader support to early childhood development

HEALTH

Quality nutrition services and primary health care

WATER & SANITATION

Safe water, sanitation

AGRICULTURE

Safe, nutritious diverse & affordable foods

SOCIAL PROTECTION

CCTs/Safety nets & response to shocks

EDUCATION

Educated & empowered women; early childhood education

BROADENING THE FOCUS: HUMAN CAPITAL

Human capital—the sum of a population’s health, skills, knowledge, and experience

- Human capital critical for economic growth – and importance likely to grow
- Investments in human capital pay economic returns far into the future
- Benefits are distant but the costs are immediate

Many countries under-invest in human capital



▶ THE HUMAN CAPITAL CHALLENGES IN AFRICA ARE URGENT

- **2.9 million children under 5 die every year**
- **50 million children are out school**
- **71% of the poorest 20% are not covered by any social protection or labor program**
- **Total fertility rates remain high – above 4 in 39 countries in the region**
- Large number of **new entrants in labor market** in coming decades





▶ THE HUMAN CAPITAL PROJECT

MORE AND BETTER INVESTMENT IN PEOPLE GLOBALLY

- 1. Human Capital Index:** Make the case for investment in the human capital of the next generation.
- 2. Measurement:** Improve measurement and research and provide analysis to support investments in human capital formation.
- 3. Country engagement:** Support Early Adopters, and ultimately all countries, to prepare national strategies that accelerate progress on human capital.

▶ HUMAN CAPITAL INDEX: THE STORY

“How much human capital will a child born today acquire by the end of secondary school, given the risks to poor health and poor education that prevail in the country where she was born?”

Three ingredients reflect building blocks of the *next generation’s* human capital:



SURVIVAL: Will children born today survive to school age?



SCHOOL – How much school will they complete and how much will they learn?



HEALTH – Will they leave school in good health, ready for further learning and/or work?

▶ HUMAN CAPITAL INDEX: DISTANCE TO FRONTIER



SURVIVAL



SCHOOL



HEALTH



HCI

Probability of survival to age 5

X

Quality-adjusted years of schooling

X

Adult survival rate & fraction of children not stunting

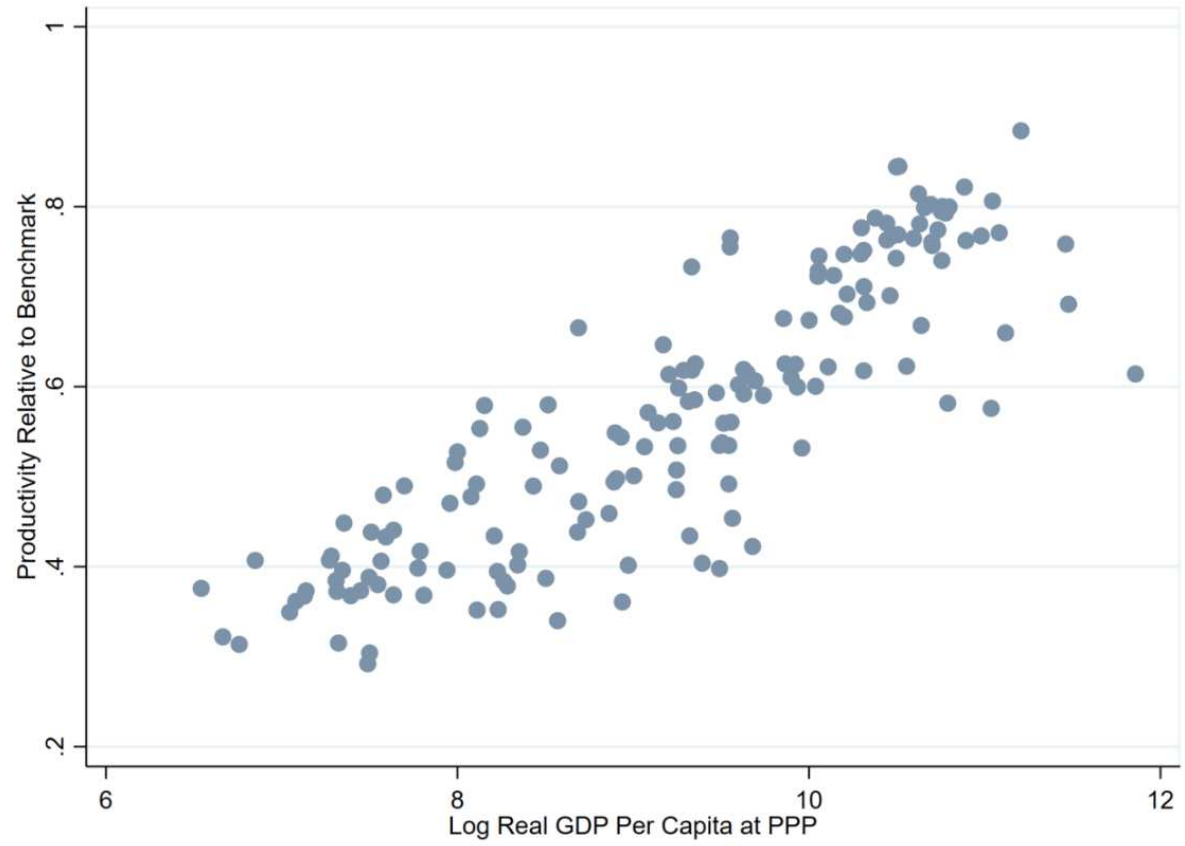
=

Productivity of a future worker

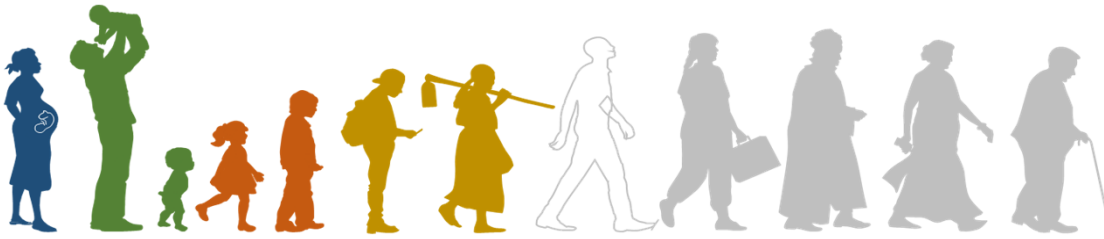
Relative to benchmark of complete education and full health



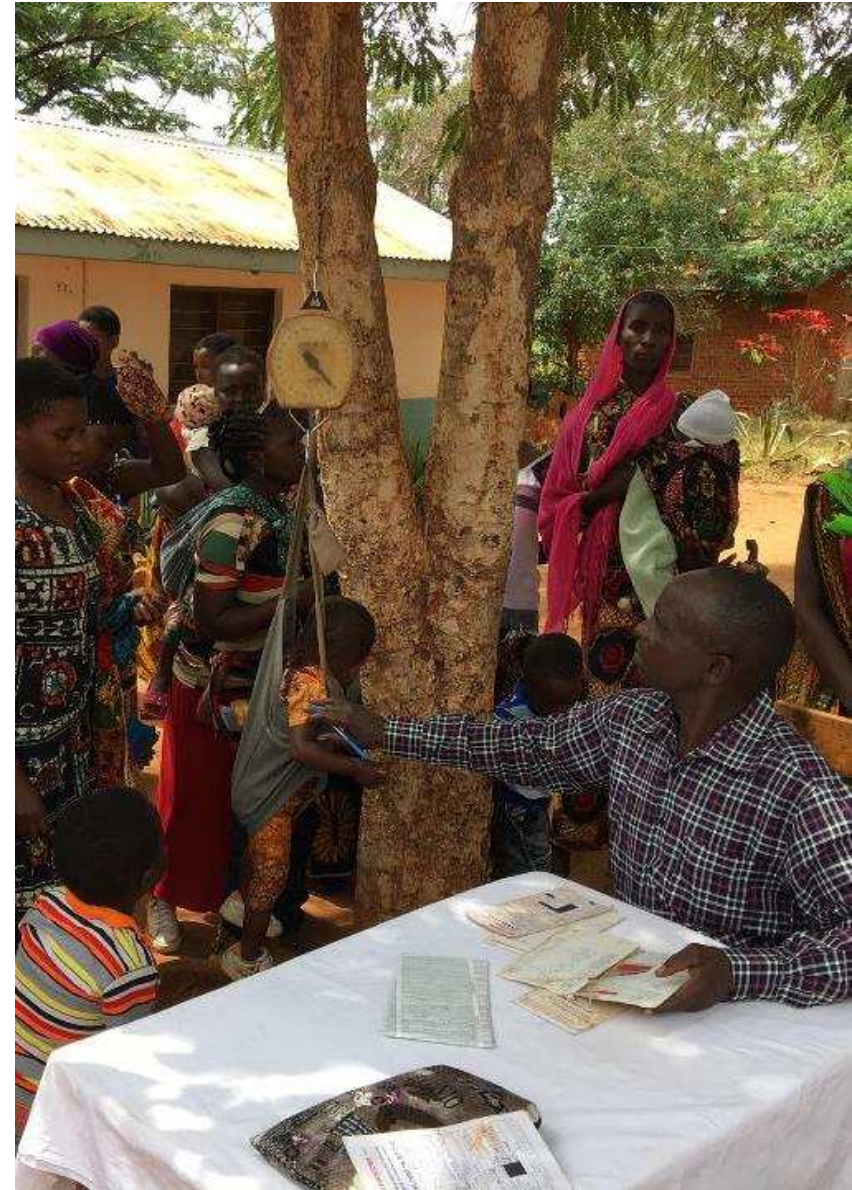
THE HUMAN CAPITAL INDEX



▶ MEASUREMENT & RESEARCH AGENDA



- **Index expected to evolve**
 - Updated based on new data
 - Expanded focus: e.g. early childhood, post-school learning, non-communicable disease
- **Research and analysis**
 - Sub-national analysis
 - Human capital inequalities
 - Determinants of human capital outcomes



TRANSFORMING HUMAN CAPITAL



- INTEGRATED STRATEGY**
- COORDINATED POLICY**
- MOBILIZATION**
- SERVICE DELIVERY**
- GOVERNANCE**



HUMAN CAPITAL OUTCOMES



- COUNTRY ENGAGEMENT**
- HUMAN CAPITAL INDEX**
- MEASUREMENT**



WORKING CLOSELY WITH PARTNERS



THANK YOU

Magnus Lindelow
mlindelow@worldbank.org