



DECEMBER 2017

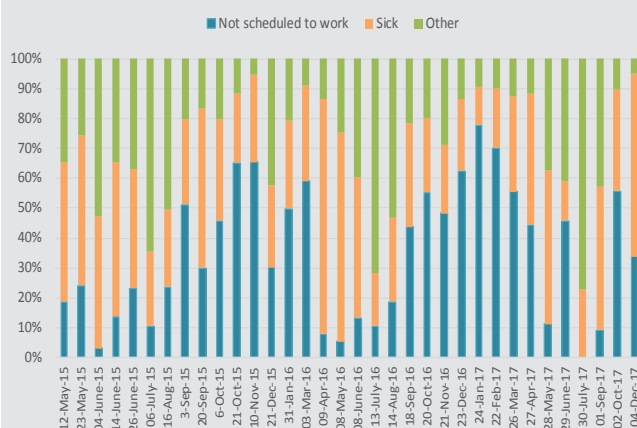
LISTENING TO TAJIKISTAN JOBS

Household Head Working During the Last Week	49%	L2TJK
Head Planned to Work Over Past Week but Did Not (Individual Level)	3%	L2TJK
Average Share of HH members working	20%	L2TJK
Average Share of HH members Looking for Job	6%	L2TJK
Household Head Lost Job or Stopped Working	1%	L2TJK
Household Head Worked 6 or 7 days Last Week (among those who worked)	57%	L2TJK

Source: Listening to Tajikistan from 12-May-15 to 04-Dec-17

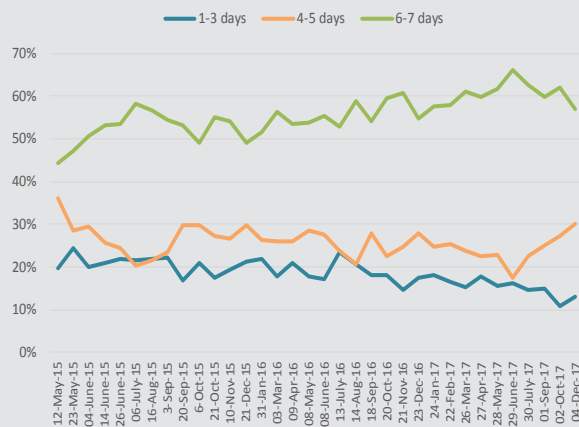
Reasons for Household Head Not Working Last Week

Source: Listening to Tajikistan.



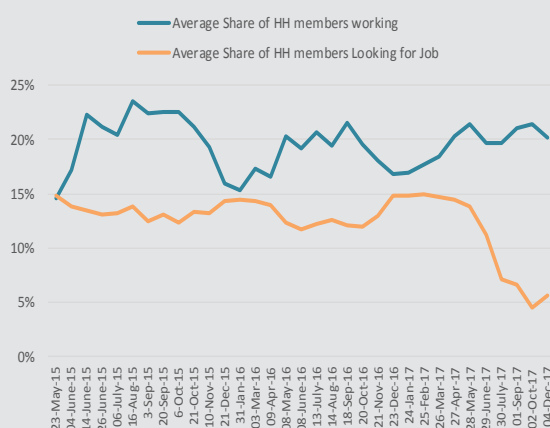
Number of Days Household Head Work Over Past Week

Source: Listening to Tajikistan.



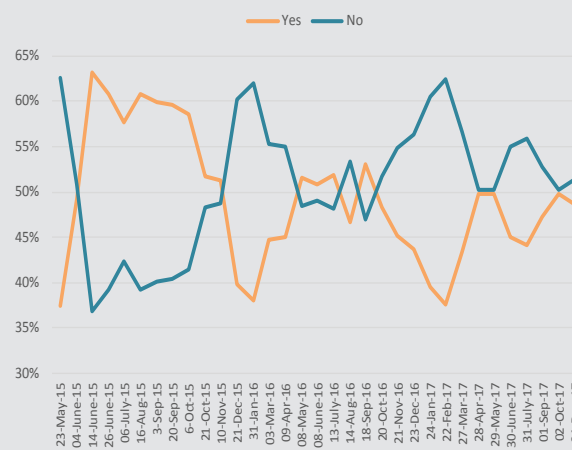
Household Member Employment Status

Source: Listening to Tajikistan.



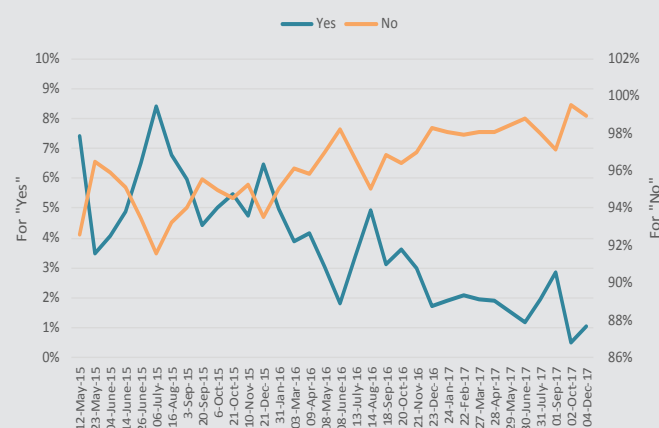
Household Head Working During the Last Week

Source: Listening to Tajikistan.



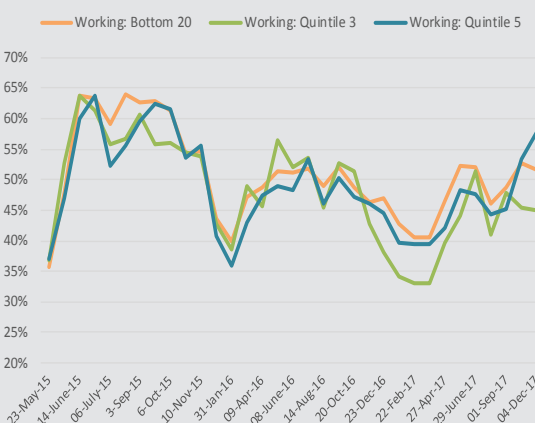
Lost Job or Stopped Working

Source: Listening to Tajikistan.



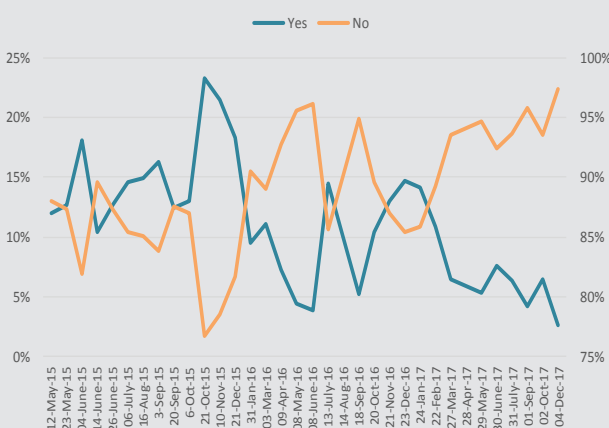
Household Head Employment by Consumption Quintile

Source: Listening to Tajikistan.



Head Planned to Work Over Past Week but Did Not (Individual Level)

Source: Listening to Tajikistan.



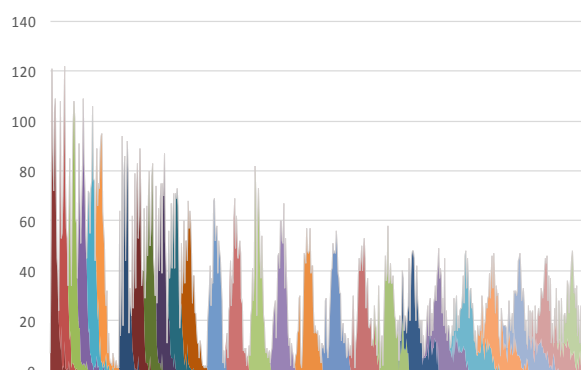
KEY INDICATORS		Subpop/Indicator	12-May-15 - 04-June-15	14-June-15 - 06-July-15	16-Aug-15 - 20-Sep-15	6-Oct-15 - 10-Nov-15	21-Dec-15 - 31-Jan-16	3-Mar-16 - 9-Apr-16	8-May-16 - 8-June-16	13-July-16 - 14-Aug-16	18-Sep-16 - 20-Oct-16	21-Nov-16 - 23-Dec-16	24-Jan-17 - 26-Mar-17	27-Apr-17 - 28-May-17	29-June-17 - 30-July-17	01-Sep-17 - 02-Oct-17	04-Dec-17
Household head is working	total		40%	60%	60%	54%	39%	45%	51%	49%	51%	44%	38%	47%	47%	49%	49%
Household head is working	urban		40%	67%	67%	61%	54%	56%	60%	53%	59%	56%	51%	59%	53%	60%	54%
Household head is working	rural		40%	58%	57%	51%	33%	40%	48%	48%	47%	39%	32%	41%	44%	43%	46%
Household head is working	b40		41%	58%	55%	49%	34%	40%	51%	48%	51%	41%	34%	42%	44%	45%	44%
Household head is working	t60		39%	62%	63%	57%	42%	48%	51%	50%	50%	47%	41%	49%	49%	51%	52%
HH Head absent from work over past 10 days (HH Level)	total		8%	5%	6%	9%	8%	5%	2%	6%	4%	8%	7%	3%	3%	3%	1%
HH Head absent from work over past 10 days (HH Level)	urban		9%	4%	7%	10%	7%	6%	3%	9%	4%	8%	8%	4%	4%	3%	1%
HH Head absent from work over past 10 days (HH Level)	rural		8%	5%	5%	9%	9%	5%	1%	5%	4%	7%	7%	3%	3%	2%	2%
HH Head absent from work over past 10 days (HH Level)	b40		9%	6%	7%	10%	8%	5%	1%	5%	3%	7%	7%	3%	3%	4%	2%
HH Head absent from work over past 10 days (HH Level)	t60		8%	4%	5%	8%	9%	5%	3%	7%	4%	8%	7%	4%	3%	2%	1%
Why Head not working over Past Week	Not scheduled to work		15%	16%	35%	59%	40%	34%	9%	15%	50%	55%	68%	28%	23%	33%	34%
Why Head not working over Past Week	Sick		47%	39%	36%	29%	28%	55%	58%	23%	30%	24%	21%	48%	18%	41%	61%
Why Head not working over Past Week	Travelling		4%	1%	0%	1%	0%	2%	0%	0%	1%	0%	1%	0%	0%	2%	0%
Why Head not working over Past Week	Stopped working perm		1%	3%	2%	3%	4%	1%	0%	0%	0%	0%	0%	0%	0%	0%	0%
Why Head not working over Past Week	Stopped working temp		4%	33%	19%	5%	4%	5%	22%	32%	19%	7%	3%	14%	56%	21%	5%
Why Head not working over Past Week	Maternity leave		0%	0%	1%	0%	0%	0%	0%	0%	0%	0%	0%	0%	0%	3%	0%
Why Head not working over Past Week	Other		28%	8%	8%	3%	24%	3%	10%	30%	1%	14%	7%	11%	3%	0%	0%
Number of days Head work over Past Week	1 day		2%	2%	2%	2%	3%	4%	2%	2%	2%	1%	2%	1%	2%	2%	1%
Number of days Head work over Past Week	2 days		5%	7%	7%	6%	7%	6%	6%	7%	5%	5%	5%	5%	4%	3%	6%
Number of days Head work over Past Week	3 days		13%	12%	11%	11%	12%	9%	9%	13%	10%	9%	9%	10%	10%	8%	6%
Number of days Head work over Past Week	4 days		13%	10%	9%	11%	11%	10%	11%	10%	9%	11%	8%	7%	8%	9%	9%
Number of days Head work over Past Week	5 days		18%	13%	15%	17%	17%	16%	17%	12%	16%	15%	16%	16%	12%	17%	21%
Number of days Head work over Past Week	6 days		15%	18%	20%	23%	22%	22%	20%	17%	22%	24%	28%	24%	22%	24%	26%
Number of days Head work over Past Week	7 days		32%	37%	35%	30%	28%	33%	35%	39%	35%	33%	30%	37%	43%	37%	31%

Source: Listening to Tajikistan

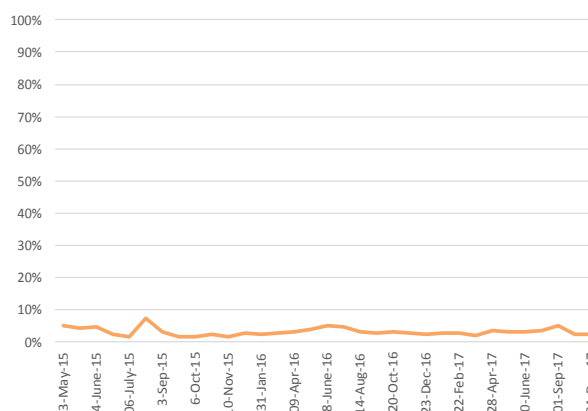
Data Description

The Poverty and Equity team of the World Bank launched the Listening-to-Tajikistan survey in 2015 to monitor the challenges faced by vulnerable households in the country. The survey instrument includes questions on a variety of themes, including income, employment, migration, wellbeing, and services. The sample includes 800 households which were drawn from a nationally representative face-to-face survey conducted in the spring of 2015. Participating households were initially interviewed in 10-day intervals, moving to two-week intervals following the sixth wave of data collection. Responses reported in this note are weighted for national representativeness and for non-response, and households that refused to participate (or otherwise drop out) were replaced with another household from the same primary sampling unit. The B40 and T60 classification for the L2T survey are defined with respect to the baseline round of the survey, and are not updated in each round.

Interviews Completed by Date and Round



Share of Households Replaced by Round



Reference:HH—Households

L2TJK—Listening2Tajikistan

F2F—Face-to-Face

T60—Top 60%

40—Bottom 40%

Meta—Meta Data

ADDITIONAL INFO

The support of UK-DFID in the design phase of this instrument is gratefully acknowledged.
Project Webpage: <http://www.worldbank.org/en/country/tajikistan/brief/listening2tajikistan>

QUESTIONS?

Contact Joao Pedro Wagner De Azavedo (jazevedo@worldbank.org), William Hutchins Seitz (wseitz@worldbank.org), Alisher Rajabov (arajabov@worldbank.org)



WORLD BANK GROUP
Poverty & Equity