

GLOBAL WILDLIFE PROGRAM

PROJECT: Zambia Integrated Forest Landscape Project



Image by Alex Berger / Flickr

OVERVIEW

Project Sites: Lukusuzi National Park and potentially Luambe National Park

Species Focus: Elephants and lions

Total Project Cost: US\$8.05 million

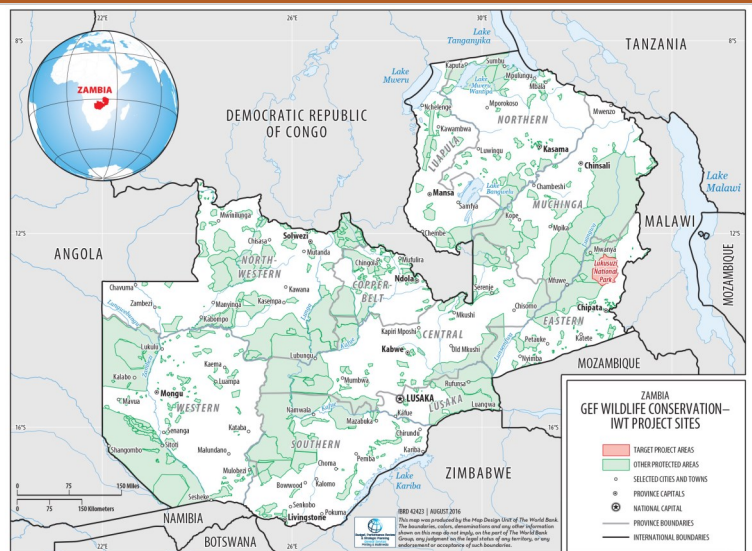
Executing Partner: Ministry of Agriculture, and Department of National Parks and Wildlife (DNPW), Forestry Department

GEF Implementing Agency: World Bank

Contact: Douglas J. Graham, dgraham@worldbank.org

Project Manager: Dr. Tasila Banda

Tasilabanda@gmail.com



CONTEXT

Zambia's rich biodiversity is critical for the livelihoods of the country's rural population. This is especially the case for the 68% of Zambia's population that live under the poverty line, and who depend on natural ecosystems for energy, farmland, and food.

The Government of the Republic of Zambia is implementing cross-sectoral and integrated rural development approaches to promote biodiversity conservation and nature based ecotourism in the protected area network. Enabling actions to stimulate conservation action include development and revision of the Wildlife Policy and Act, and issuance of the Wildlife Act No 14 (2015), Forestry Policy (2015) and Forest Act No 4 (2015). Zambia submitted its second National Biodiversity Strategy and Action Plan, 2015-2025 (NBSAP-2), has designed a National Elephant Action Plan (NEAP), and is a participating state in the Convention on International Trade in Endangered Species of Wild Fauna and Flora (CITES) Rhinoceros Enforcement Task Force. The country is engaged in the Wildlife Enforcement Network of Southern Africa (WENSA). It has also conducted joint cross border law enforcement operations with Malawi, Tanzania, and Zimbabwe.

PROJECT COMPONENTS

The GWP Zambia project aims to improve landscape management and increase the flow of benefits for targeted rural communities in the Eastern Province. The project's main components are:

- Enabling Environment
- Livelihood and Low-Carbon Investments

PROJECT FOCUS

- Wildlife Management (Community management of wildlife, community conservation areas, community resource boards, human wildlife conflict mitigation)
- Management plans for Protected Areas and forest reserves in proximity to protected area.
- Sustainable Forest Management
- Climate Smart Agriculture (including agroforestry)

