



The  
World Bank



Human Development  
Network



Spanish Impact  
Evaluation Fund



Government of  
Liberia

[www.worldbank.org/hdchiefeconomist](http://www.worldbank.org/hdchiefeconomist)  
[www.emansion.gov.lr](http://www.emansion.gov.lr)



---

# **Evaluating Impact: Turning Promises into Evidence**

---

## **Liberia Yes Project**

**Hon. James Dorbor Jallah, Dept. Minister, Ministry of Planning**

**Hon. Kehleboe Gongloe, Asst. Minister, Minister of Labor**

**Ramses Kumbuyah, Executive Director, LACE**

**Emily Weedon, Social Protection Officer, WB-Liberia**

**Accra, Ghana**

**May 2010**

# Outline

1. Background
2. Results Chain
3. Primary Research Questions
4. Outcome Indicators
5. Identification Strategy/Method
6. Sample and Data
7. Work Plan
8. Sources of Financing



# 1. Background

## Project Inception:

- Fourteen years of civil war deprived Liberian youth of access to schooling
- Food price and financial crisis worsen situation.
- In 2008, the Government of Liberia requested the World Bank to help mitigate the negative impact of increasing food prices on vulnerable households.
  - Grant of US\$3 million provided, targeting 17,000 vulnerable people with Cash for Work Temporary Employment Project (CfWTEP). The project was successfully implemented by the Liberia Agency for Community Empowerment (LACE).
- Further Government request for continued project support targeting most vulnerable



# 1. Background

## **Project Development Objective:**

- Expand access of poor and young Liberians to temporary employment programs; and
- to improve youth employability, in support of the Government of Liberia's response to the employment crisis.

## **Target Group**

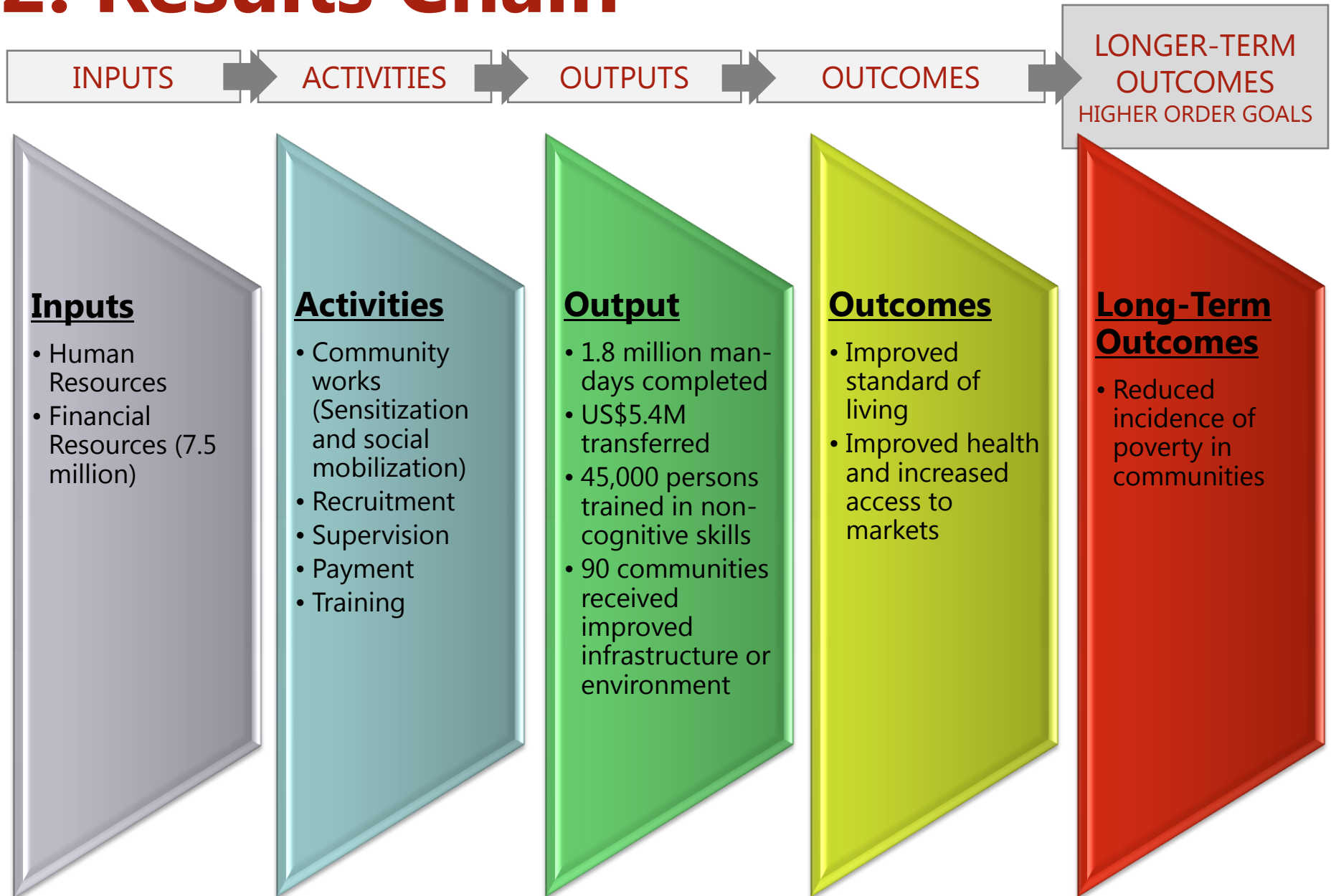
- 45,000 vulnerable people in all 15 of Liberia's counties, especially the youth between the age 18 to 35 years.

## **Focus of Impact Evaluation**

- The following impact evaluation will focus on the first objective of the project (access to temporary employment programs) which will be conducted under the Community Works Component of the Project.



# 2. Results Chain



# 3. Primary Research Questions

## Household Impact

Does temporary employment improve the standard of living within participant households?

---

## Community Impact

Do community works improve standards of living within the beneficiary communities?



# 4. Outcome Indicators

There are two categories of outcome indicators linked to the two research questions:

1. **Beneficiary Households**  
Improve Standard of Living of Beneficiary Households by increasing:



- ✓ HH expenditures on school fees
- ✓ HH expenditures on food
- ✓ HH expenditures on health care
- ✓ HH expenditures on farm investments
- ✓ HH expenditures on business investments
- ✓ HH expenditures on household assets

2. **Beneficiary Community:**  
Improved standard of living of beneficiary communities by decreasing:



- ✓ incidence of malaria
- ✓ incidence of cholera
- ✓ travel time to nearest market
- ✓ travel time to nearest clinic
- ✓ travel time to nearest school





# 5. Identification Strategy/ Method

## Randomized selection

- ❑ For individual impact, participants will be randomly selected from a pool of eligible community members. Those persons who the project cannot accommodate, given budgetary constraints, will form the control group.
- ❑ For community impact, geographic roll-out will be randomly assigned and the project will collect baseline data for districts to participate in the third year from the project's inception.



# 6. Sample and Data

## Sample

- Eligible households and selected communities in districts in Liberia
- Unit of evaluation:
  - Households
  - Communities

## Data

- HH expenditures on school fees, food, health care, farm and business investments, and household assets
- Incidence of malaria and cholera in communities
- Travel time from community to nearest market, clinic, and school



# 7. Time Frame / Work Plan

		Months																		
		0	1	2	3	4	5	6	7	8	9	10	11	12	13	14	15	16	17	18
District A	B-line		Treatment (500 ppl)					Eval.	Graduate from Program				Follow-up							
			Internal Control Group (250 ppl)																	
District B	B-line		Control Group					Eval.		Treat.				Eval.	Graduate from Program				Follow-up	
District C	B-line		Control Group					Eval.	Control Group				Eval.		Treat.					Eval.
District D	B-line		Control Group					Eval.						Eval.						Eval.
District E	B-line		Control Group					Eval.						Eval.						Eval.
District F	B-line		Control Group					Eval.						Eval.						Eval.



# 8. Sources of Financing

- ❑ \$300,000 for impact evaluation in YES Project budget

